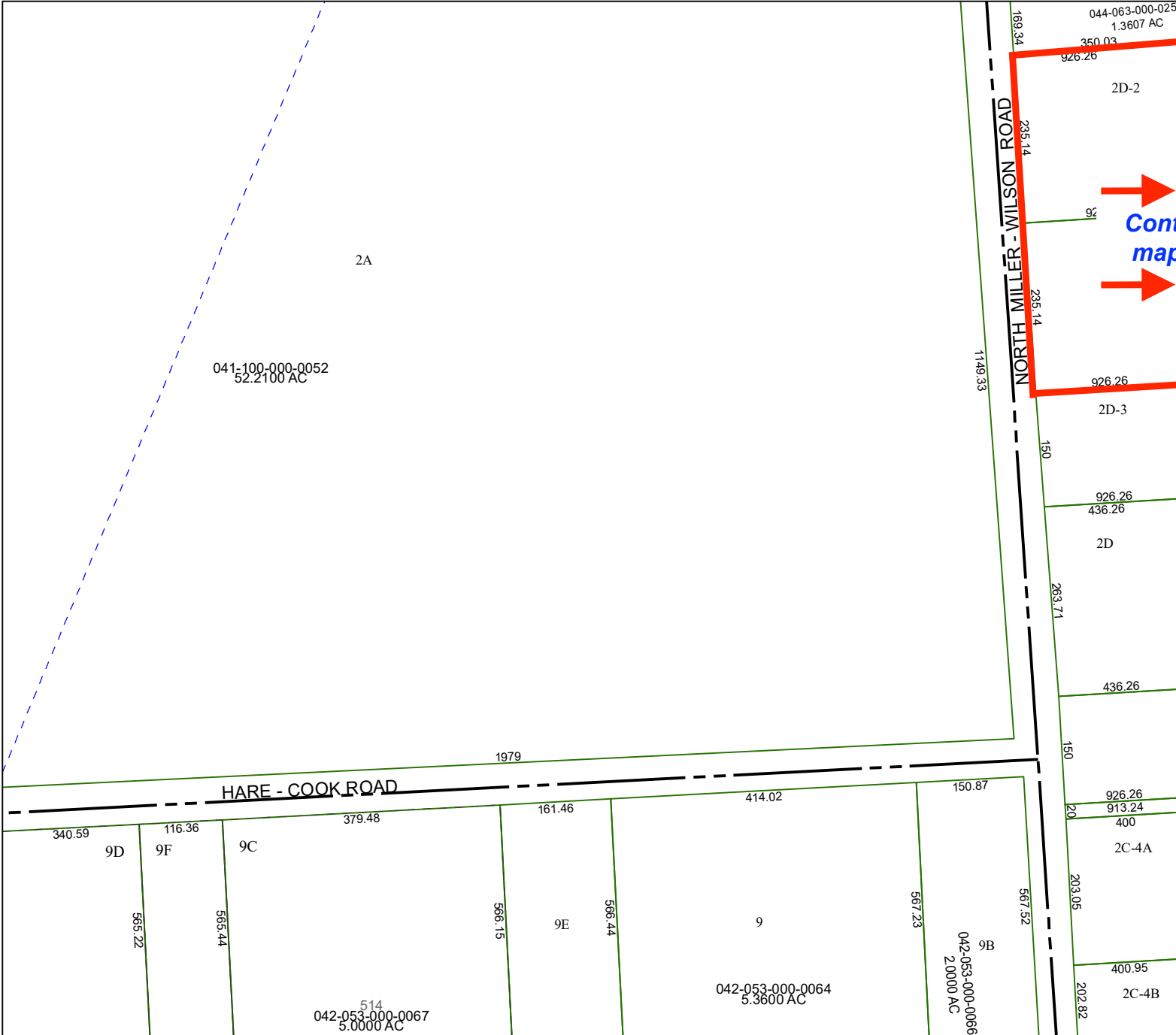


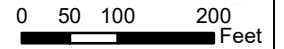
6165A2

6165A5



Harris County Appraisal District

Continued on map 6165A7

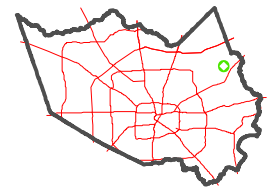


PUBLICATION DATE: 6/7/2021

Geospatial or map data maintained by the Harris County Appraisal District is for informational purposes and may **not** have been prepared for or be suitable for legal, engineering, or surveying purposes. It does **not** represent an on-the-ground survey and only represents the approximate location of property boundaries.



MAP LOCATION



FACET 6165A6

4	1	2	3	4
8	5	6	7	8
12	9	10	11	12

6165A10

6165A7

6165A3

6165A11

6165A6



Continued on map 6165A6

Harris County Appraisal District

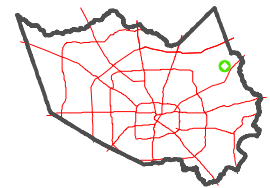


0 50 100 200 Feet

PUBLICATION DATE:
6/7/2021

Geospatial or map data maintained by the Harris County Appraisal District is for informational purposes and may **not** have been prepared for or be suitable for legal, engineering, or surveying purposes. It does **not** represent an on-the-ground survey and only represents the approximate location of property boundaries.

MAP LOCATION



FACET 6165A7

1	2	3	4	1
5	6	7	8	5
9	10	11	12	9

6165A5

2J