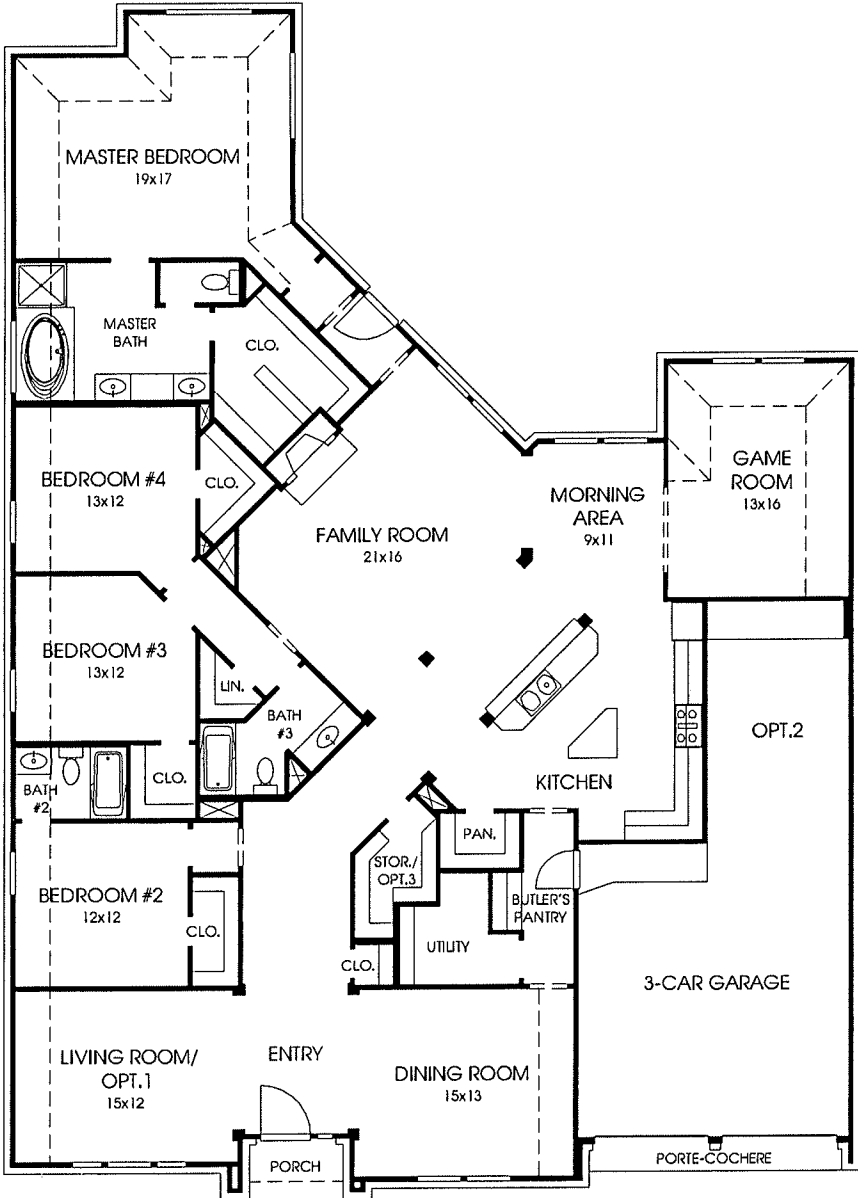


# DESIGNS

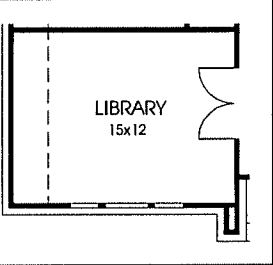
## Plan 3228W

*This home contains approximately 3,228 square feet and includes four bedrooms and three baths.*



### OPTION 1

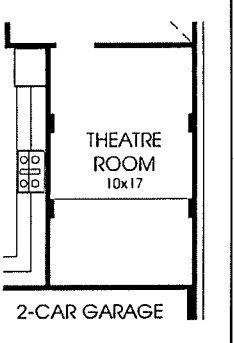
This floor plan has the option for a library with double French doors in lieu of the living room.



### OPTION 2

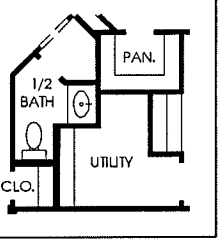
This floor plan has the option for a theatre room in lieu of the third garage bay.

**Note:** This option adds 164 square feet to the floor plan.



### OPTION 3

This floor plan has the option for a half bath in lieu of the storage closet.



### OPTION 4

This floor plan has the option for an alternate bay location in the master bedroom.

