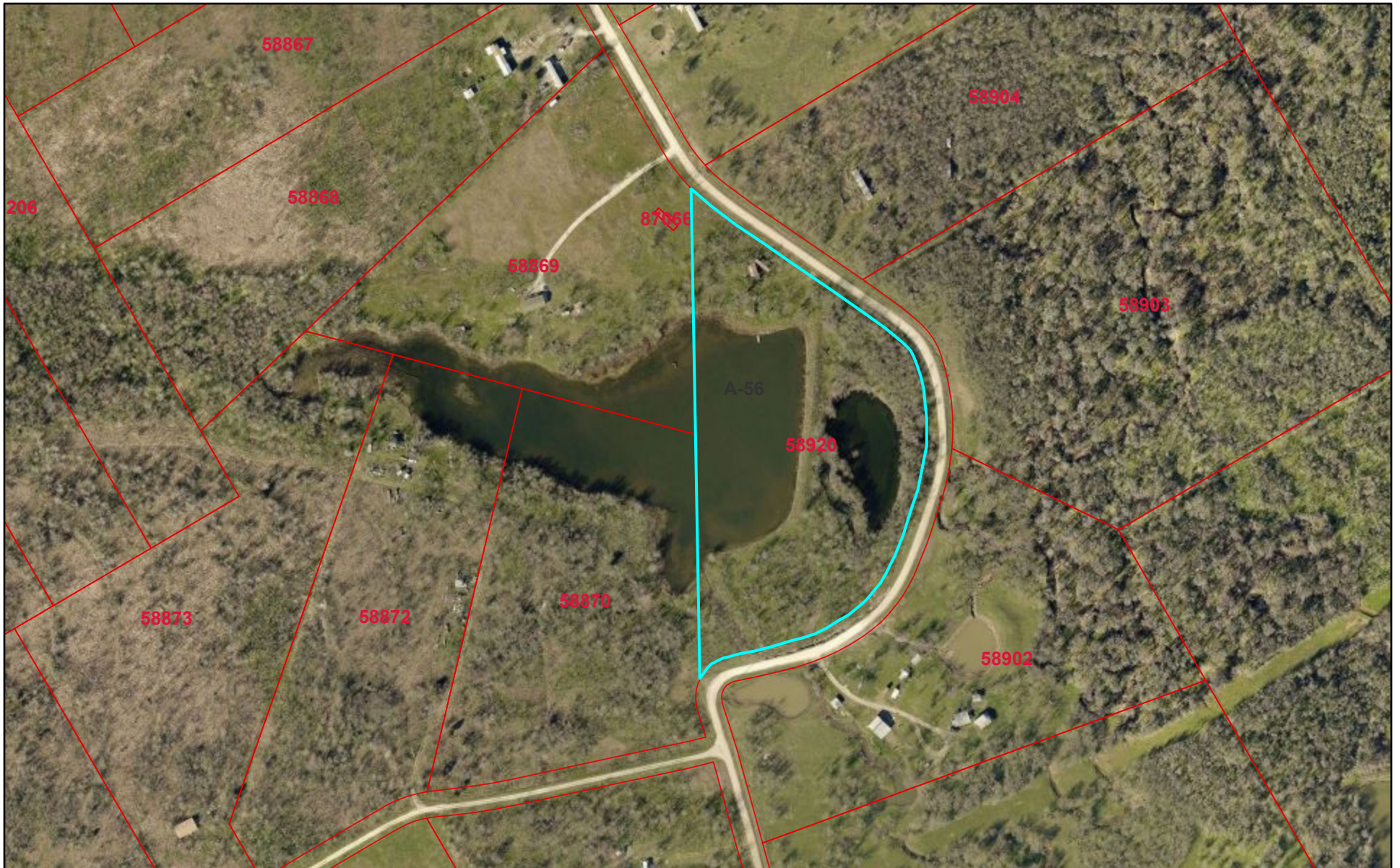
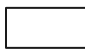


# Navarro CAD Web Map

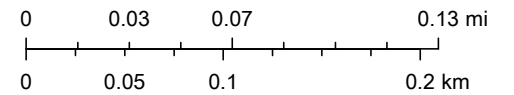


10/17/2021, 10:33:29 PM

 Parcels

 Abstracts

1:4,514



© OpenStreetMap (and) contributors, CC-BY-SA

Navarro County Appraisal District, BIS Consulting - [www.bisconsulting.com](http://www.bisconsulting.com)

Disclaimer: This product is for informational purposes only and has not been prepared for or be suitable for legal, engineering, or surveying purposes. It does not represent an on-the-ground survey and represents only the approximate relative location of boundaries.