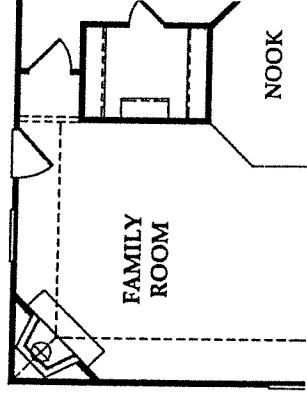
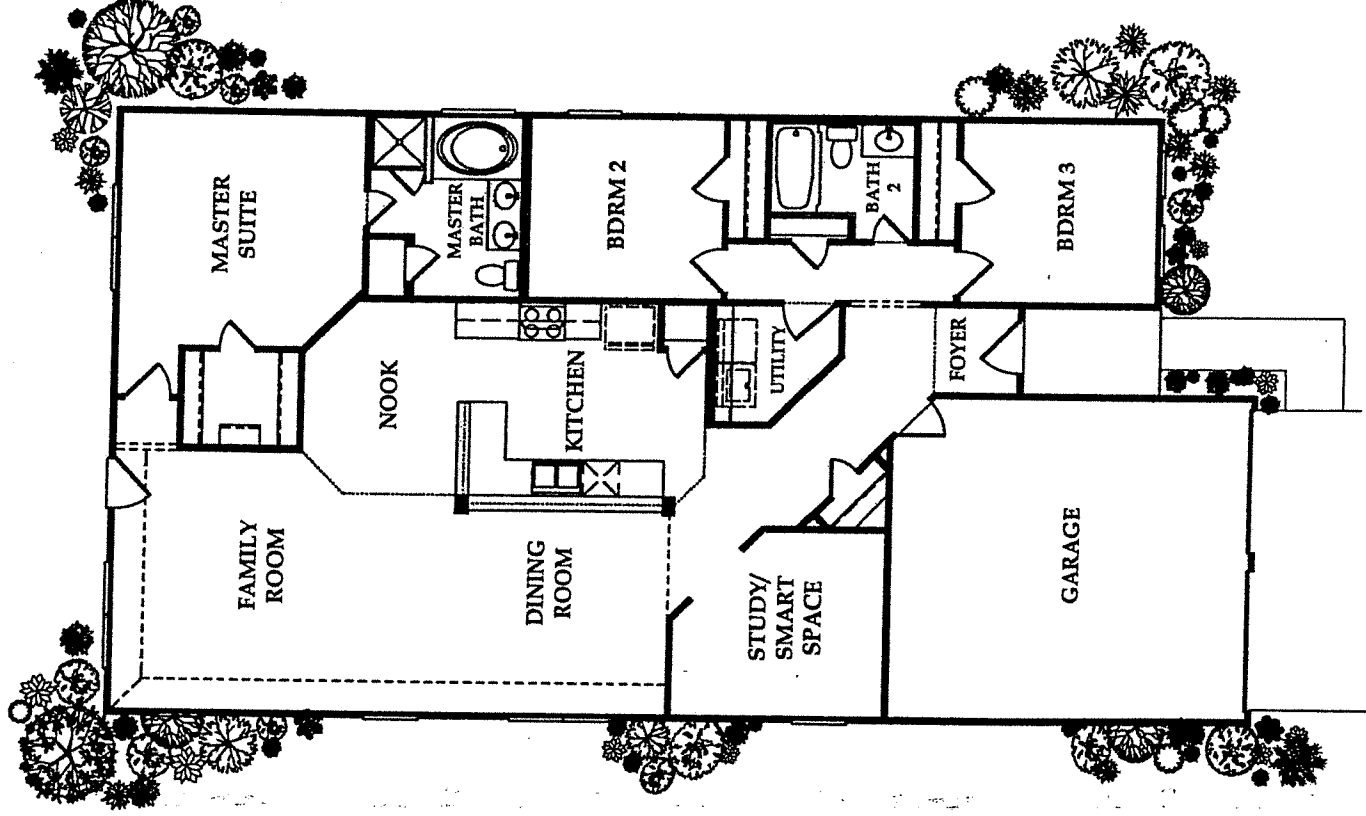
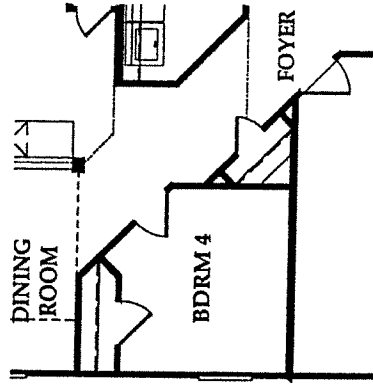


ORLEANS II



FIREPLACE OPTION



BEDROOM 4 OPTION

H1653F3174AFIB-12/23/04

Prices subject to change without notice. All square footage approximate. Pulte Homes Central Group reserves the right to revise specifications and dimensions without notice. Flooring, appliances, room sizes, windows, roofs, ceilings and exteriors may vary. © 2003 Pulte Homes Central Group



Sienna Plantation

Canterbury Series

ENVIRONMENTS FOR *Living*

ENVIRONMENTS FOR LIVING FEATURES

- R13 friction batt insulation installed in walls with zero tolerance application
- R22 fiberglass in sloped ceilings
- R30 fiberglass insulation in attic
- Aluminum, double pane insulated LoE2 windows
- 12 SEER CARRIER condenser
- 50 gallon energy efficient gas or electric water heater
- 80 AFUE sealed combustible furnace
- Electronically controlled fresh air cycler
- Gas & electric dryer hookups with outside vent
- Polyfoam sealant around doors, windows, exterior penetrations and foundation
- TENNECO sheathing on exterior bricked walls
- Thermostat for comfort control

EXTERIOR FEATURES

- Backyard six-foot fence with gate.
- Concrete walkways, driveways, and patio
- Convenient outdoor faucets and electrical outlets
- Full guttering and downspouts
- Full sod in front and backyard with landscape package.
- Raised panel steel overhead garage door
- Six panel composite front door with aluminum threshold, keylock and deadbolt

INTERIOR FEATURES

- Ceramic tile flooring in the entry*
- 6 panel raised interior doors*
- Ceiling lights in all bedrooms
- High quality **Portico Royale** carpeting by **MOHAWK**
- Sloped, or gambrel ceilings (in most plans)
- Textured flush panel interior doors with satin stainless steel hardware.
- Ventilated shelving in closets.

DESIGNER KITCHEN FEATURES

- Ceramic tile flooring in kitchen and breakfast room*
- Ceramic tile backsplash*
- Recessed can lighting *
- GENERAL ELECTRIC** white on white appliance package - including gas range, vent hood with light, and energy efficient dishwasher *
- Pre-installed ice maker plumbing
- Stainless steel double sink with **MOEN** dual faucet, vegetable sprayer and heavy duty garbage disposal
- WILSONART** laminate counter tops
- WOODSTAR** 30" oak cabinets with flat panel doors in three finishes

BATH FEATURES

- Separate glass enclosed shower with oval garden tub in master bathroom*
- Cultured Marble Countertops.*
- Ceramic tile flooring in master bath, hall bath, and powder room (per plan)*
- Polished chrome bathroom hardware
- White porcelain on steel drop in vanity bowl featuring **MOEN** chrome faucets
- White porcelain on steel tub with shower head in master and secondary bathrooms with 6" ceramic tile surrounds

SECURITY FEATURES

- Burglar resistant double locks on all windows
- Front and rear door lighting
- Wireless security system
- Single cylinder deadbolt lock on front door
- Smoke detectors with battery backup throughout home
- Carbon Monoxide detectors

QUALITY CONSTRUCTION FEATURES

- 125 Amp service with copper wiring
- 3-Tab roof shingles over 15 lb. felt
- ACME** American made brick on all four sides of first floor

- FISHER** windows with aluminum mill finish frames and screens
- Divided lite windows on front of home
- ZURN PEX** Plumbing
- Engineered foundations
- Engineered floor systems
- OSB roof decking 7/16"
- Tongue-in-groove subflooring - 3/4" OSB
- HOMETEAM** pest defense system

AVAILABLE UPGRADES

- Solid surface countertops in the kitchen
- 36" wood burning fireplace with gas log lighter
- Ceiling fan and ceiling fan prewire
- Ceramic tile flooring
- Choice of upgrade **MOHAWK** carpeting
- Enlarge backyard patio
- Extra gate
- Garage door opener
- GENERAL ELECTRIC** Spacesaver microwave oven
- Glass block in master bathroom
- Refrigerator, washer, dryer
- Sprinkler system

Ask your **PULTE SALES PROFESSIONAL** about other upgrades which may be available
Features Subject to Revision

PULTE PROTECTION PLAN – The exclusive ten year limited warranty protection for your home

PULTE CUSTOMER SERVICE – A team of representatives to handle your warranty requests

"HIGHEST IN CUSTOMER SATISFACTION WITH NEW HOME BUILDERS IN HOUSTON"

J.D. Power and Associates 2002 New Home Builder Customer Satisfaction Study sm. Study based on responses from 56,193 buyers of newly constructed homes in 16 of the largest U.S. markets. Houston market covers Brazoria, Ft.Bend, Galveston, Harris, Montgomery Counties. www.jdpower.com.

* Standard feature effective on contracts written after November 24, 2004

