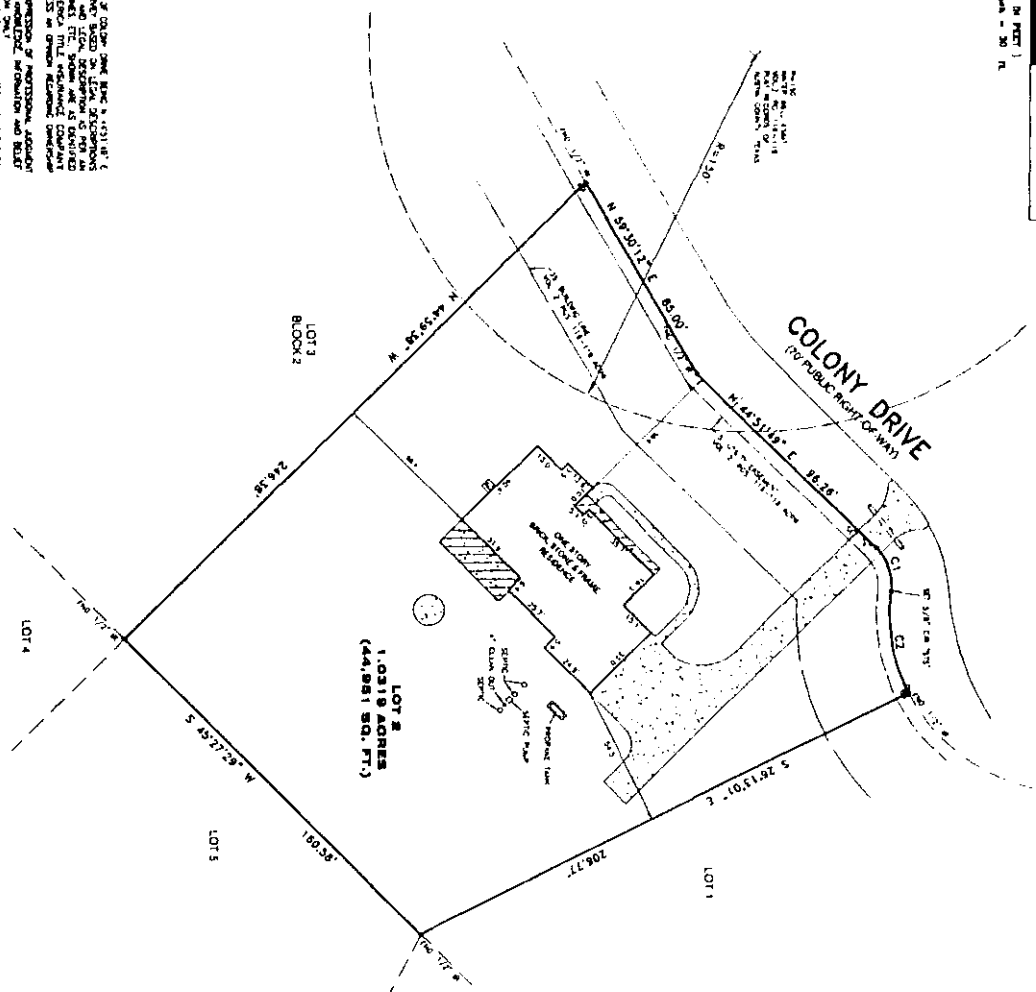




- 1. METERS OF BOUNDING & THE DISTANCES TO THE CORNER, CORNER BEING A (1) 1/4" OF C...
- 2. THE DISTANCE FROM THE CORNER TO THE CENTER OF THE CURVE...
- 3. THE DISTANCE FROM THE CENTER OF THE CURVE TO THE POINT OF TANGENCY...
- 4. THE DISTANCE FROM THE POINT OF TANGENCY TO THE POINT OF CURVATURE...
- 5. THE DISTANCE FROM THE POINT OF CURVATURE TO THE POINT OF TANGENCY...
- 6. THE DISTANCE FROM THE POINT OF TANGENCY TO THE POINT OF CURVATURE...
- 7. THE DISTANCE FROM THE POINT OF CURVATURE TO THE POINT OF TANGENCY...
- 8. THE DISTANCE FROM THE POINT OF TANGENCY TO THE POINT OF CURVATURE...
- 9. THE DISTANCE FROM THE POINT OF CURVATURE TO THE POINT OF TANGENCY...
- 10. THE DISTANCE FROM THE POINT OF TANGENCY TO THE POINT OF CURVATURE...



NOTES: 1. METERS OF BOUNDING & THE DISTANCES TO THE CORNER, CORNER BEING A (1) 1/4" OF C... 2. THE DISTANCE FROM THE CORNER TO THE CENTER OF THE CURVE... 3. THE DISTANCE FROM THE CENTER OF THE CURVE TO THE POINT OF TANGENCY... 4. THE DISTANCE FROM THE POINT OF TANGENCY TO THE POINT OF CURVATURE... 5. THE DISTANCE FROM THE POINT OF CURVATURE TO THE POINT OF TANGENCY... 6. THE DISTANCE FROM THE POINT OF TANGENCY TO THE POINT OF CURVATURE... 7. THE DISTANCE FROM THE POINT OF CURVATURE TO THE POINT OF TANGENCY... 8. THE DISTANCE FROM THE POINT OF TANGENCY TO THE POINT OF CURVATURE... 9. THE DISTANCE FROM THE POINT OF CURVATURE TO THE POINT OF TANGENCY... 10. THE DISTANCE FROM THE POINT OF TANGENCY TO THE POINT OF CURVATURE...

CLASSE	LENGTH	NUMBER	CURVED	CHORD	CHORD BEARING	CHORD DISTANCE
CL	412.00	1	NO	412.00	112.50	412.00
CL	412.00	1	NO	412.00	112.50	412.00
CL	412.00	1	NO	412.00	112.50	412.00
CL	412.00	1	NO	412.00	112.50	412.00

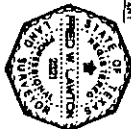
See Texas Bill 1277-18

Sumner Brook Wn 12/17/17

SCHEDULE "B" FEES
 OF INSTRUMENT FROM SETTLER'S CROSSING TO DEVELOPMENT ENGINEER
 AUSTIN ELECTRIC, LLC, RECORDED IN FILE NO. 2012-07-000-0000 RECORDS
 OF AUSTIN COUNTY, TEXAS BLANKET NOT RETURNED
 100 SAMANTHA CONTROL DISTRICT FROM SETTLER'S CROSSING, INC. TO
 SUTHER COUNTY OF TEXAS-SETTLER'S CROSSING WATER SYSTEM, TEXAS
 DOES NOT AFFECT SUBJECT PROPERTY RECORDS OF AUSTIN COUNTY, TEXAS
 100 JUDITH ELLIOTT BUILDING - 4015 E. 11TH ST. AUSTIN, TEXAS
 RECORDED IN VOLUME 2, PAGE 111-8. PLAT RECORDS OF AUSTIN COUNTY,
 TEXAS AS SHOWN HEREON.

SUBDIVISION INFORMATION
 METERS OF BOUNDING & THE DISTANCES TO THE CORNER, CORNER BEING A (1) 1/4" OF C...
 1. METERS OF BOUNDING & THE DISTANCES TO THE CORNER, CORNER BEING A (1) 1/4" OF C...
 2. THE DISTANCE FROM THE CORNER TO THE CENTER OF THE CURVE...
 3. THE DISTANCE FROM THE CENTER OF THE CURVE TO THE POINT OF TANGENCY...
 4. THE DISTANCE FROM THE POINT OF TANGENCY TO THE POINT OF CURVATURE...
 5. THE DISTANCE FROM THE POINT OF CURVATURE TO THE POINT OF TANGENCY...
 6. THE DISTANCE FROM THE POINT OF TANGENCY TO THE POINT OF CURVATURE...
 7. THE DISTANCE FROM THE POINT OF CURVATURE TO THE POINT OF TANGENCY...
 8. THE DISTANCE FROM THE POINT OF TANGENCY TO THE POINT OF CURVATURE...
 9. THE DISTANCE FROM THE POINT OF CURVATURE TO THE POINT OF TANGENCY...
 10. THE DISTANCE FROM THE POINT OF TANGENCY TO THE POINT OF CURVATURE...

[Signature]
 Surveyor General
 Registered Professional Land Surveyor No. 2251



SURVEY OF
 LOT 2, BLOCK 2, SECTION 3, SETTLER'S CROSSING, A SUBDIVISION SHOWN
 IN VOLUME 2, PAGE 111, PLAT RECORDS OF AUSTIN COUNTY, TEXAS.
 ADDRESS: 9804 COLONY DRIVE
 SELLY, TEXAS 77474
 JOB NO.: 2278-18 SCALE: 1" = 30' DATE: 12-18-18

SOUTH TEXAS SURVEYING ASSOCIATES, INC.
 11281 Rockwood Lane, Suite 101, Houston, Texas 77044
 TEL: 281-466-0110 FAX: 281-466-0111
 P.O. Box 1004100 Houston, Texas 77210
 TEL: 281-466-0110 FAX: 281-466-0111
 P.O. Box 1004100 Houston, Texas 77210

JOB NO: 2278-18