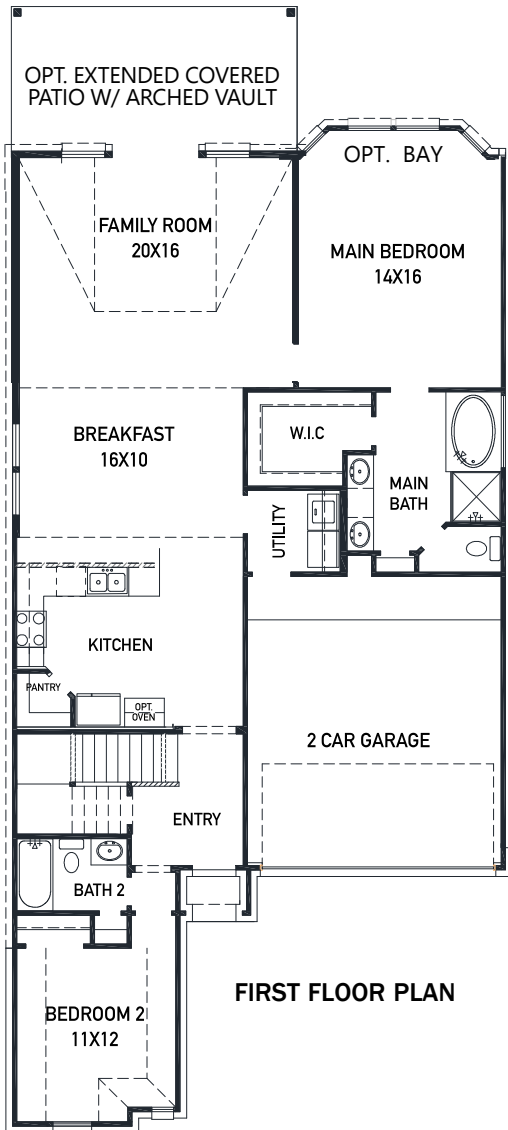


N

1735 Waters Branch Dr. - Dawson Plan
SIENNA 45' - Heritage Park - Section 29A

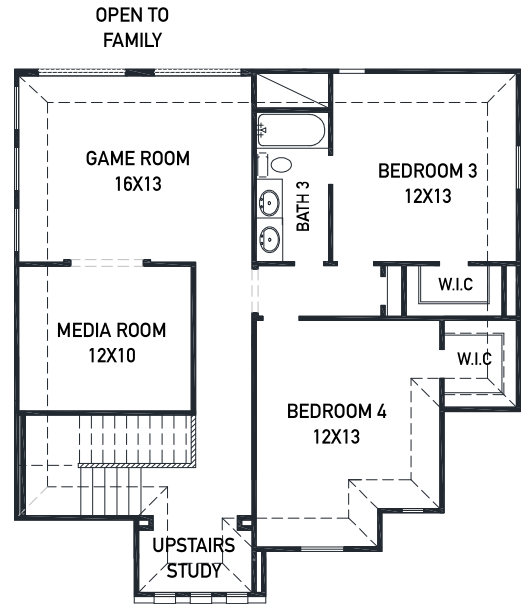
NEW HOME COMING SOON!



FIRST FLOOR PLAN

FEATURES

- 2 Story - Apx: 2654 sqft.
- 4 Bedrooms - 3 Bathrooms
- 2 Car Garage
- 45 x 138 Homesite - 6567sqft.
- Estimated Completion: Feb. 2022



SECOND FLOOR PLAN

- Upgraded front elevation w/ brick on 1st floor sides/back
- Built in appliances w/ a 36" 5 burner gas cook-top
- Modern 42" kitchen cabinetry w/ hardware
- Upgraded Quartz countertops in the kitchen & bathrooms
- High end vinyl in the main living areas
- Upgraded 8' front door

THE NEWMARK STANDARD IN SIENNA

- Open cell spray foam insulation
- 16 seer duel stage HVAC system
- Full sprinkler system & sod
- Full rain gutters
- Environments for living builder
- 3rd party inspections (Foundation, frame, energy, final)

REV 8/20 (452D)



These drawings are conceptual only and are for the convenience of reference. They should not be relied upon as representations, express or implied, of the final detail of the residences. The builder expressly reserves the right to make modifications, revisions, and changes it deems desirable in its sole and absolute discretion. Dimensions and square footages are approximate and may vary with actual construction.

NEWMARK
HOMES

newmarkhomes.com