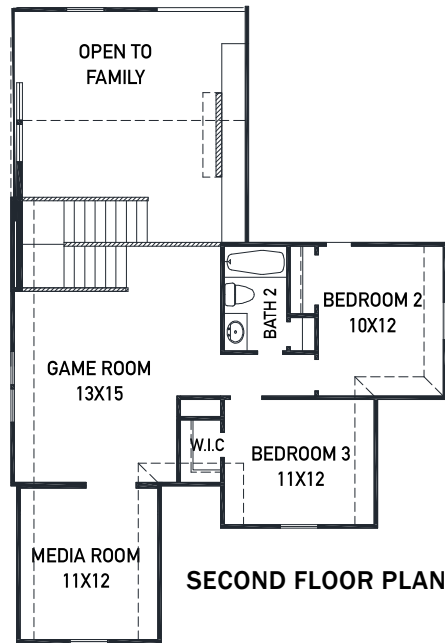
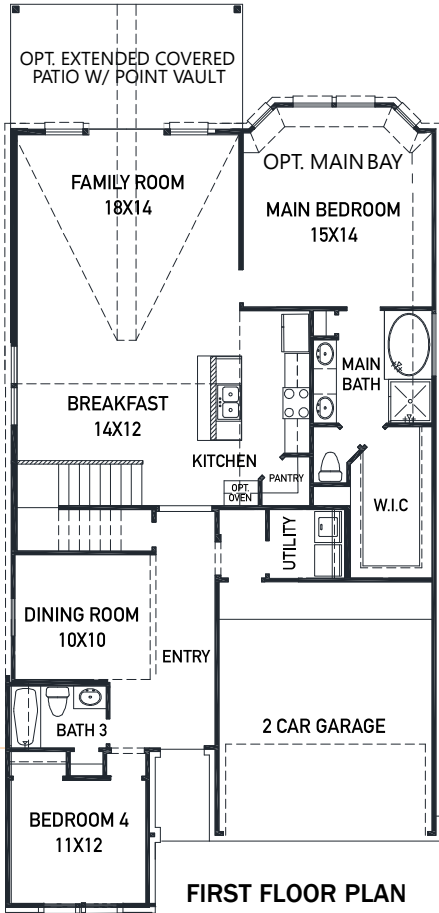


# N

1803 Waters Branch Dr. - Maverick Plan  
SIENNA 45' - Heritage Park - Section 29A

NEW HOME COMING SOON!



- 4 sided brick elevation including brick on the 1st floor sides/back
- Built in appliances w/ a 36" 5 burner gas cook-top
- Modern 42" kitchen cabinetry w/ hardware
- Porcelain countertops in the kitchen & main bath, quartz in bath 2/3
- Quality hardwood flooring in the main living areas
- Upgraded 8' solid wood front door with privacy granite glass

## FEATURES

- 2 Story - Apx: 2492sqft.
- 4 Bedrooms - 3 Bathrooms
- 2 Car Garage
- 45 x 132 Homesite - 6345sqft.
- Estimated Completion: Feb. 2022

- THE NEWMARK STANDARD IN SIENNA
- Open cell spray foam insulation
- 16 seer duel stage HVAC system
- Full sprinkler system & sod
- Full rain gutters
- Environments for living builder
- 3rd party inspections (Foundation, frame, energy, final)

REV 8/20 (452M)



These drawings are conceptual only and are for the convenience of reference. They should not be relied upon as representations, express or implied, of the final detail of the residences. The builder expressly reserves the right to make modifications, revisions, and changes it deems desirable in its sole and absolute discretion. Dimensions and square footages are approximate and may vary with actual construction.

**NEWMARK**  
HOMES

[newmarkhomes.com](http://newmarkhomes.com)