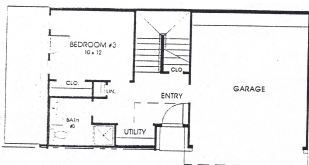


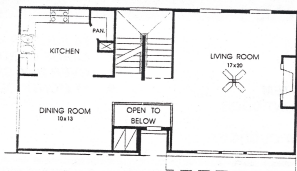
# DESIGNS

## Plan 2051

This Townhome contains approximately 2,051 square feet and includes three bedrooms and three baths.



FIRST FLOOR



SECOND FLOOR



THIRD FLOOR

\*All dimensions shown based on finished floor levels. Dimensions shown in parentheses are approximate. Dimensions shown in brackets are approximate. Dimensions shown in boxes are approximate. Dimensions shown in circles are approximate. Dimensions shown in triangles are approximate. Dimensions shown in squares are approximate. Dimensions shown in diamonds are approximate. Dimensions shown in hexagons are approximate. Dimensions shown in octagons are approximate. Dimensions shown in stars are approximate. Dimensions shown in crosses are approximate. Dimensions shown in pluses are approximate. Dimensions shown in asterisks are approximate. Dimensions shown in hashes are approximate. Dimensions shown in percent signs are approximate. Dimensions shown in dollar signs are approximate. Dimensions shown in at signs are approximate. Dimensions shown in hash signs are approximate. Dimensions shown in ampersands are approximate. Dimensions shown in percent signs are approximate. Dimensions shown in dollar signs are approximate. Dimensions shown in at signs are approximate. Dimensions shown in hash signs are approximate. Dimensions shown in ampersands are approximate.

# PERRY HOMES

