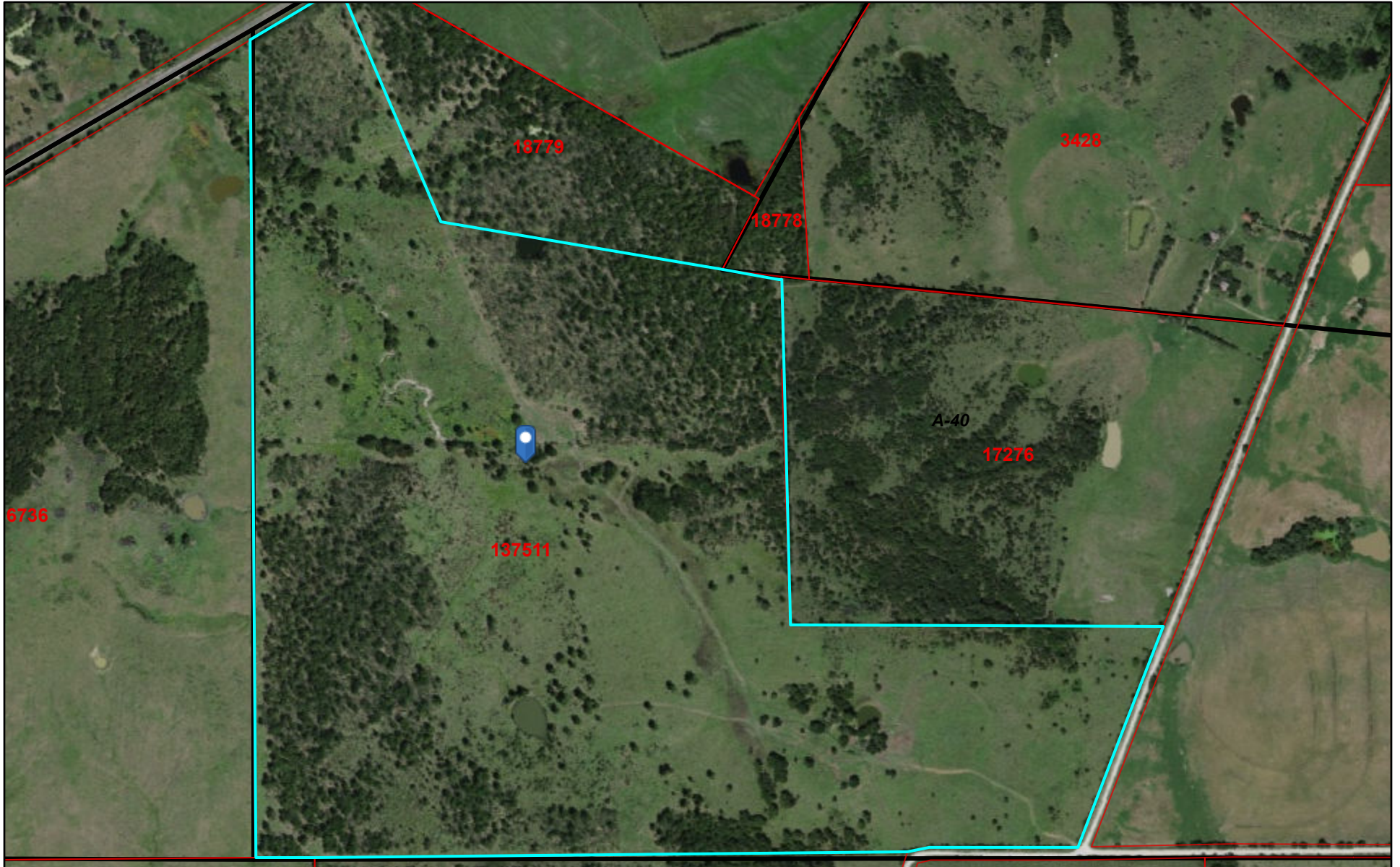



# Limestone CAD Web Map

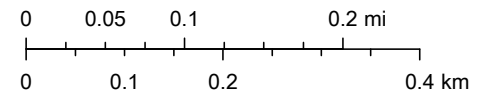


10/20/2021, 8:00:58 PM

 Parcels

 Abstracts

1:9,028



© OpenStreetMap (and) contributors, CC-BY-SA

Limestone County Appraisal District, BIS Consulting - [www.bisconsulting.com](http://www.bisconsulting.com)

Disclaimer: This product is for informational purposes only and has not been prepared for or be suitable for legal, engineering, or surveying purposes. It does not represent an on-the-ground survey and represents only the approximate relative location of boundaries.