



SCALE: 1"=20'



DREES CUSTOM HOMES L.P.  
6225 N. STATE HIGHWAY 161, SUITE 400, IRVING, TX 75038 (972) 953-4300

**SUBDIVISION NOTES**

**CUSTOMER AGREEMENT**

I UNDERSTAND THAT MY NEW DREES HOME WILL BE BUILT IN GENERAL CONFORMANCE TO THE PLANS, SPECIFICATIONS, SELECTIONS AND THE PURCHASE AGREEMENT, ALL OF WHICH I HAVE REVIEWED AND APPROVED. THIS SET OF PLANS MAY NOT REFLECT THE ELEVATIONS OR OPTIONS FOR MY HOUSE. DREES DRAWS THE STANDARD PLANS COMPLETE WITH THE MOST COMMON OPTIONS. THE SUBCONTRACTORS' SETS WILL SHOW THE OPTIONS I SELECTED IN MY SELECTION SHEETS.

I HAVE REVIEWED THE PLOT PLAN FOR MY HOUSE AND UNDERSTAND THAT THERE MAY BE SOME FIELD ADJUSTMENTS AS TO THE EXACT LOCATION OF THE HOUSE ON THE LOT.

I FURTHER UNDERSTAND THAT MY HOME WILL NOT BE BUILT EXACTLY LIKE ANY OTHER DREES HOME OR MODEL AND THAT SOME MINOR VARIATION FROM MY PLANS AND SPECIFICATIONS MAY OCCUR SINCE EVERY HOME THAT IS BUILT HAS ITS OWN SET OF UNIQUE CONSTRUCTION PROBLEMS THAT MUST BE DEALT WITH AS THE HOME IS BEING BUILT.

DATE: \_\_\_\_\_ BUILDER: \_\_\_\_\_ (PLEASE PRINT)

CUSTOMER: \_\_\_\_\_ CUSTOMER: \_\_\_\_\_

**DESCRIPTION**

**MERIDIANA**  
**SECTION 66**

**BRAZORIA COUNTY, TEXAS**

CONTRACT REVISIONS:

RESIDENCE FOR:

**MARKET**

CONSTRUCTION ADDRESS: 10130 BLYTHE STREET

CONTRACT BY: **KMB**

SUBDIVISION:

**MERIDIANA**

PHONE NO.: (850) 578-4322

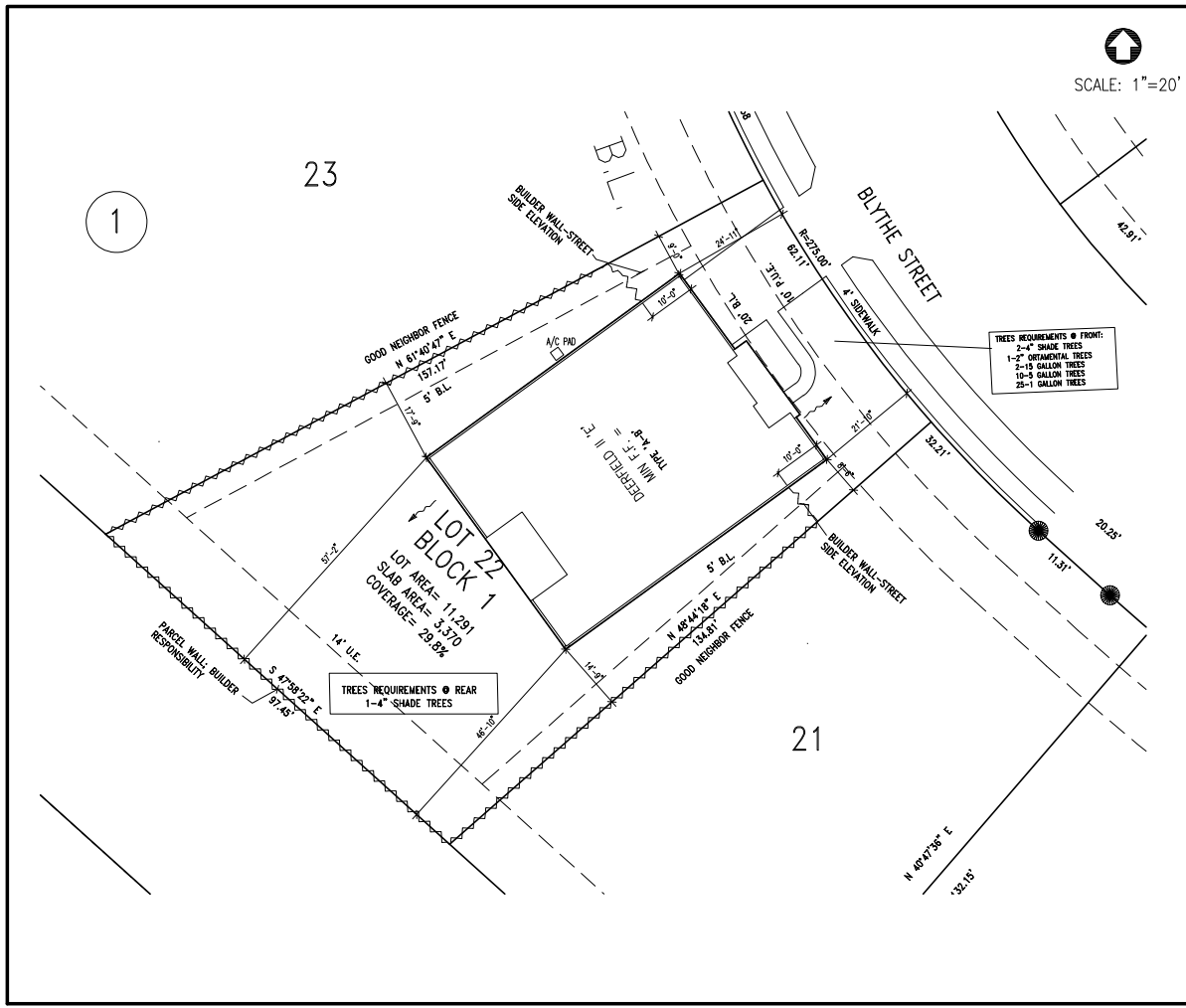
JOB #

**MER6-0022-1**

CONTRACT DATE: 2/16/20

SHEET NO.

**OP.1**



23

1

21

TREES REQUIREMENTS @ REAR  
1-4" SHADE TREES

TREES REQUIREMENTS @ FRONT:  
2-4" SHADE TREES  
1-2" ORNAMENTAL TREES  
2-19 GALLON TREES  
10-8 GALLON TREES  
25-1 GALLON TREES

PANEL WALL BUILDER RESPONSIBILITY

LOT 22  
BLOCK 1  
LOT AREA= 11,291  
SLAB AREA= 3,370  
COVERAGE= 29.9%

DELETED II  
P.L. 201  
MIN. E.S. 3

GOOD NEIGHBOR FENCE  
N 67°40'47" E  
157.17'  
5' B.L.

GOOD NEIGHBOR FENCE  
N 48°41'18" E  
134.81'  
5' B.L.

BLYTHE STREET

BUILDER WALL-STREET  
SIDE ELEVATION

BUILDER WALL-STREET  
SIDE ELEVATION

N 48°41'38" E  
152.15'

RESERVATION  
82.17'

20.25'

11.51'

11.51'

11.51'

11.51'

11.51'

11.51'

11.51'

11.51'

11.51'

11.51'

11.51'

11.51'

11.51'

11.51'

11.51'

11.51'

11.51'

11.51'

11.51'

11.51'

11.51'

11.51'

11.51'

11.51'

11.51'

11.51'

11.51'

11.51'

11.51'

11.51'

11.51'

11.51'

11.51'

11.51'

11.51'

11.51'

11.51'

11.51'

11.51'

11.51'

11.51'

11.51'

11.51'

11.51'

11.51'

11.51'

11.51'

11.51'

11.51'

11.51'

11.51'

11.51'

11.51'

11.51'

11.51'

11.51'

11.51'

11.51'

11.51'

11.51'

11.51'

11.51'

11.51'

11.51'

11.51'

11.51'

11.51'

11.51'

11.51'

11.51'

11.51'

11.51'

11.51'

11.51'

11.51'

11.51'

11.51'

11.51'

11.51'

11.51'

11.51'

11.51'

11.51'

11.51'

11.51'

11.51'

11.51'

11.51'

11.51'

11.51'

11.51'

11.51'

11.51'

11.51'

11.51'

11.51'

11.51'

11.51'

11.51'

11.51'

11.51'

11.51'

11.51'

11.51'

11.51'

11.51'

11.51'

11.51'

11.51'

11.51'

11.51'

11.51'

11.51'

11.51'

11.51'

11.51'

11.51'

11.51'

11.51'

11.51'

11.51'

11.51'

11.51'

11.51'

11.51'

11.51'

11.51'

11.51'

11.51'

11.51'

11.51'

11.51'

11.51'

11.51'

11.51'

11.51'

11.51'

11.51'

11.51'

11.51'

11.51'

11.51'

11.51'

11.51'

11.51'

11.51'

11.51'

11.51'

11.51'

11.51'

11.51'

11.51'

11.51'

11.51'

11.51'

11.51'

11.51'

11.51'

11.51'

11.51'

11.51'

11.51'

11.51'

11.51'

11.51'

11.51'

11.51'

11.51'

11.51'

11.51'

11.51'

11.51'

11.51'

11.51'

11.51'

11.51'

11.51'

11.51'

11.51'

11.51'

11.51'

11.51'

11.51'

11.51'

11.51'

11.51'

11.51'

11.51'

11.51'

11.51'

11.51'

11.51'

11.51'

11.51'

11.51'

11.51'

11.51'

11.51'

11.51'

11.51'

11.51'

11.51'

11.51'

11.51'

11.51'

11.51'

11.51'

11.51'

11.51'

11.51'

11.51'

11.51'

11.51'

11.51'

11.51'

11.51'

11.51'

11.51'

11.51'

11.51'

11.51'

11.51'

11.51'

11.51'

11.51'

11.51'

11.51'

11.51'

11.51'

11.51'

11.51'

11.51'

11.51'

11.51'

11.51'

11.51'

11.51'

11.51'

11.51'

11.51'

11.51'

11.51'

11.51'

11.51'

11.51'

11.51'

11.51'