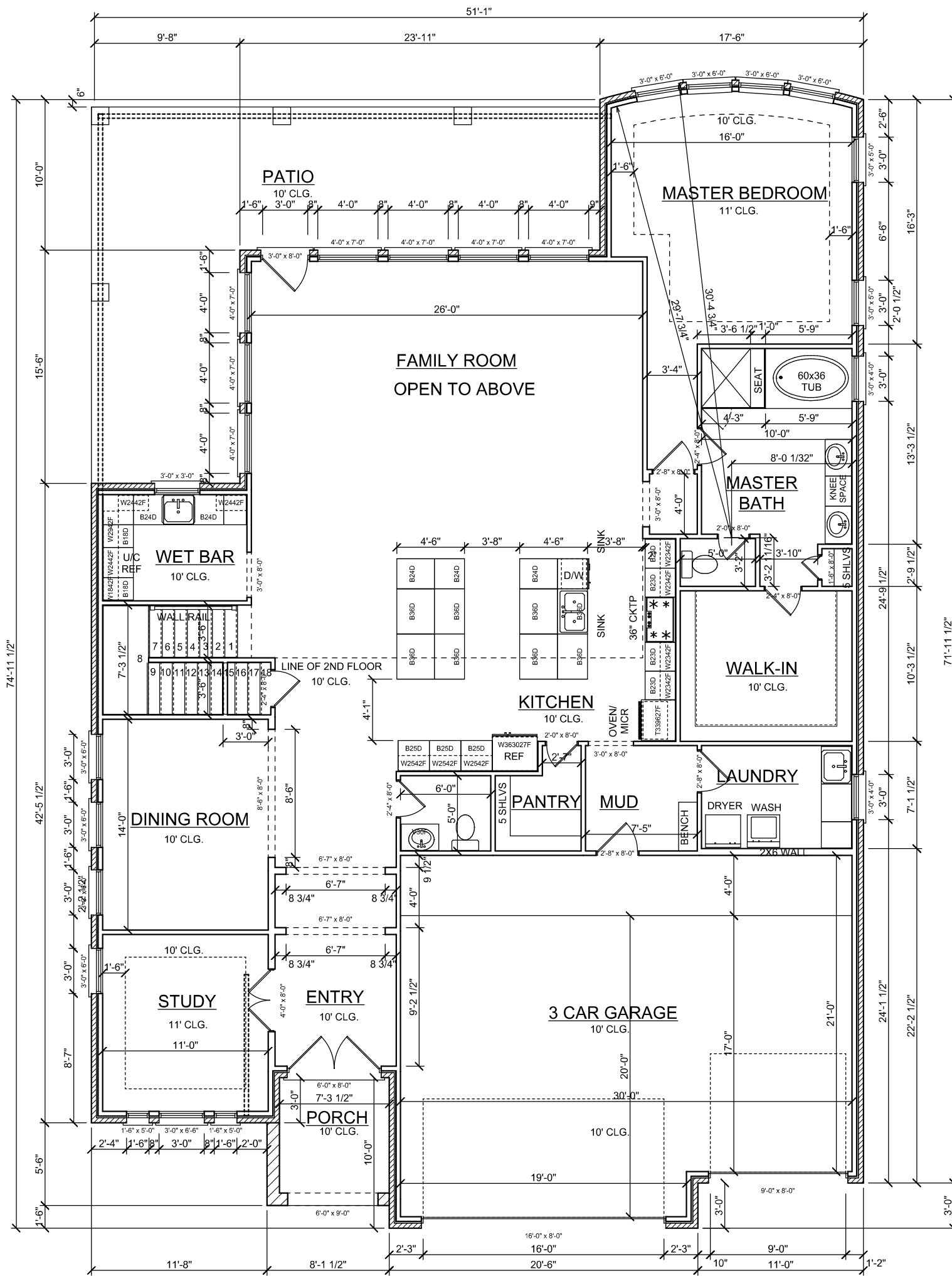


GENERAL NOTES

1. ALL WINDOW HEADER HEIGHTS MEASURED FROM FINISHED FLOOR IMMEDIATELY INSIDE WINDOW.
2. ALL CEILING HEIGHTS MEASURED FROM THE FINISHED FLOOR IN THE ROOM BEING CALLED OUT (GARAGE CEILING HEIGHTS MEASURED FROM THE WHEEL STOP ELEVATION).
3. IRC 2012, R309.2 - THE GARAGE SHALL BE SEPARATED FROM THE RESIDENCE AND ITS ATTIC AREA BY NOT LESS THAN 1/2 INCH GYPSUM BOARD APPLIED TO THE GARAGE SIDE. GARAGES BENEATH HABITABLE ROOMS ABOVE BY NOT LESS THAN 5/8 INCH TYPE "X" GYPSUM BOARD OR EQUIVALENT.
4. PROVIDE 20-MINUTE SELF-CLOSING DOOR BETWEEN GARAGE AND RESIDENCE.
5. SMOKE DETECTORS REQUIRE 110V CONNECTION TO HOUSE WITH BATTERY BACKUP. LOCATIONS COMPLY WITH 2012 IRC.
6. ALL BEDROOM WINDOWS SHALL BE 44" A.F.F. (MAX) WITH 24" HIGH (MIN) X 20" WIDE (MIN) OPENING AND 5.7 SQ.FT. (MIN) NET CLEAR OPENING.
7. PROVIDE VENTILATION TO ALL BATHS AND UTILITY ROOMS THROUGH NATURAL OR MECHANICAL MEANS AND COMPLY WITH 2012 IRC.
8. FINAL LOCATION OF ALL A/C COMPRESSORS, ELECTRIC METER, GAS METER, PHONE, CABLE, ETC, MAY VARY DUE TO FIELD CONDITIONS.
9. SHOWER STALLS AND TUB WALLS SHALL BE FINISHED WITH NON-ABSORBENT SURFACE TO A HEIGHT NOT LESS THAN 70" ABOVE THE DRAIN INLET OVER A CONCRETE BACKER BOARD.
10. ALL WINDOWS AT FIRST FLOOR LEVEL TO BE A MINIMUM OF 18" ABOVE FINISHED FLOOR UNLESS NOTED OTHERWISE. ALL WINDOWS AT SECOND FLOOR LEVEL TO BE A MINIMUM OF 24" ABOVE FINISHED FLOOR UNLESS NOTED OTHERWISE.
11. 2012 IRC, 311.2.2 - ENCLOSED ACCESSIBLE SPACE UNDER STAIRS SHALL HAVE WALLS, UNDER STAIR SURFACE AND ANY SOFFITS PROTECTED ON THE ENCLOSED SIDE WITH 1/2 INCH GYPSUM BOARD.
12. 2012 IRC, R311.5.1 - STAIRWAYS SHALL NOT BE LESS THAN 36 INCHES IN CLEAR WIDTH AT ALL POINTS ABOVE THE PERMITTED HANDRAIL HEIGHT AND BELOW THE REQUIRED HEADROOM HEIGHT. HANDRAILS SHALL NOT PROJECT MORE THAN 4.5 INCHES ON EITHER SIDE OF THE STAIRWAY AT AND BELOW THE HANDRAIL HEIGHT, INCLUDING TREADS AND LANDINGS, SHALL NOT BE LESS THAN 31.5 INCHES WHERE A HANDRAIL IS INSTALLED ON ONE SIDE AND 27 INCHES WHERE HANDRAILS ARE PROVIDED ON BOTH SIDES.
13. 2012 IRC, R311.5.6 - HANDRAILS SHALL BE PROVIDED ON AT LEAST ONE SIDE OF EACH CONTINUOUS RUN OF TREADS OR FLIGHT WITH FOUR OR MORE RISERS.
14. 2012 IRC, R311.5.6.1 - HANDRAIL HEIGHT, MEASURED VERTICALLY FROM THE SLOPED PLAN ADJOINING THE TREAD NOSING, OR FINISH SURFACE OF RAMP SLOPE, SHALL NOT BE LESS THAN 34 INCHES AND NOT MORE THAN 38 INCHES.
15. 2012 IRC, R311.5.6.2 - HANDRAILS FOR STAIRWAYS SHALL BE CONTINUOUS FOR THE FULL LENGTH OF THE FLIGHT, FROM A POINT DIRECTLY ABOVE THE TOP RISER OF THE FLIGHT TO A POINT DIRECTLY ABOVE THE LOWEST RISER OF THE FLIGHT. HANRAIL ENDS SHALL BE RETURNED OR SHALL TERMINATE IN NEWEL POSTS OR SAFETY TERMINALS. HANDRAILS ADJACENT TO A WALL SHALL HAVE SPACE OF NOT LESS THAN 1-1/2 INCH BETWEEN THE WALL AND HANDRAILS.
16. 2012 IRC, R312.2 - REQUIRED GUARDS ON OPEN SIDES OF STAIRWAYS, RAISED FLOOR AREAS, BALCONIES AND PORCHES SHALL HAVE INTERMEDIATE RAILS OR ORNAMENTAL CLOSURES WHICH DO NOT ALLOW PASSAGE OF A SPHERE 4 INCHES OR MORE IN DIAMETER. EXCEPTION 1 - THE TRIANGULAR OPENINGS FORMED BY THE RISER, TREAD AND BOTTOM RAIL OF A GUARD AT THE OPEN SIDE OF A STAIRWAY ARE PERMITTED TO BE OF SUCH A SIZE THAT A SPHERE 6 INCHES CANNOT PASS THROUGH. EXCEPTION 2 - OPENINGS FOR REQUIRED GUARDS ON THE SIDES OF STAIR TREADS SHALL NOT ALLOW A SPHERE 4-3/8 INCHES TO PASS THROUGH.
17. 2012 IRC, R311.5.3.1 - THE MAXIMUM RISER HEIGHT SHALL BE 7-3/4 INCHES. THE RISER SHALL BE MEASURED VERTICALLY BETWEEN LEADING EDGES OF THE ADJACENT TREADS. THE GREATEST RISER HEIGHT WITHIN ANY FLIGHT OF STAIRS SHALL NOT EXCEED THE SMALLEST BY MORE THAN 3/8 INCH.
18. 2012 IRC, R301.5, FOOTNOTE D - HANDRAILS AND GUARDS SHALL BE DESIGNED FOR A MINIMUM 200LB LIVE LOAD AND A SINGLE CONCENTRATED LOAD APPLIED IN ANY DIRECTION AT ANY POINT ALONG THE TOP.

NAME	AREA
1ST FLOOR LIVING	2,384 sq ft.
2ND FLOOR LIVING	1,205 sq ft.
TOTAL LIVING	3,589 sq ft.
FRONT PORCH	75 sq ft.
GARAGE	744 sq ft.
PATIO	514 sq ft.
TOTAL SLAB	3,717 sq ft.
TOTAL COVERED	4,922 sq ft.



FLOOR PLAN

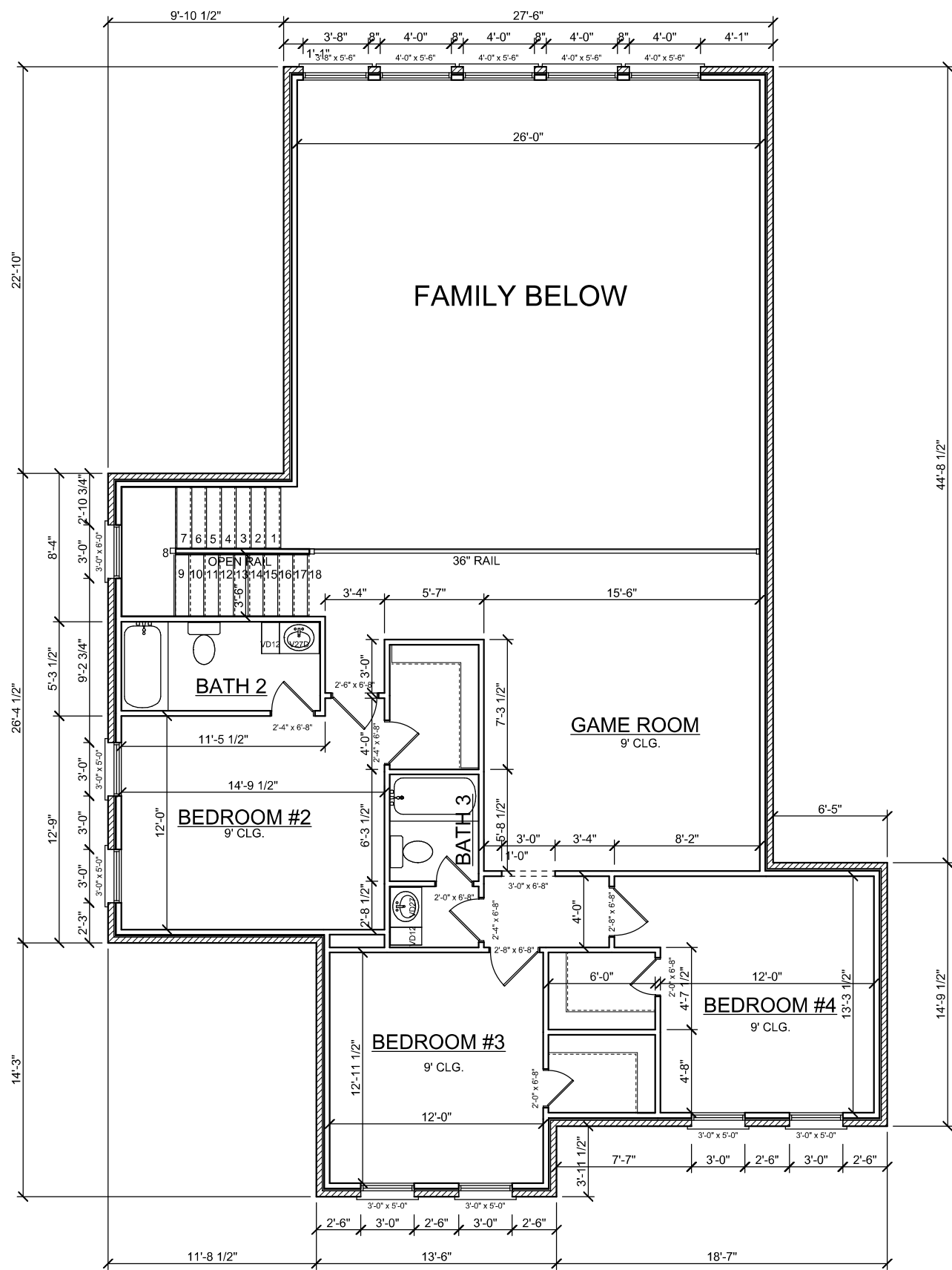
NO	DATE	COMMENTS

DRAWN BY: **Malibu Drafting & Design**
281-210-6858
 DATE: 09/25/2017
 SCALE: 1/8"=1'-0" ON 11"x17" SHEET

PLAN:
 ~SHEET~

GENERAL NOTES

1. ALL WINDOW HEADER HEIGHTS MEASURED FROM FINISHED FLOOR IMMEDIATELY INSIDE WINDOW.
2. ALL CEILING HEIGHTS MEASURED FROM THE FINISHED FLOOR IN THE ROOM BEING CALLED OUT (GARAGE CEILING HEIGHTS MEASURED FROM THE WHEEL STOP ELEVATION).
3. IRC 2012, R309.2 - THE GARAGE SHALL BE SEPARATED FROM THE RESIDENCE AND ITS ATTIC AREA BY NOT LESS THAN 1/2 INCH GYPSUM BOARD APPLIED TO THE GARAGE SIDE. GARAGES BENEATH HABITABLE ROOMS ABOVE BY NOT LESS THAN 5/8 INCH TYPE "X" GYPSUM BOARD OR EQUIVALENT.
4. PROVIDE 20-MINUTE SELF-CLOSING DOOR BETWEEN GARAGE AND RESIDENCE.
5. SMOKE DETECTORS REQUIRE 110V CONNECTION TO HOUSE WITH BATTERY BACKUP. LOCATIONS COMPLY WITH 2012 IRC.
6. ALL BEDROOM WINDOWS SHALL BE 44" A.F.F. (MAX) WITH 24" HIGH (MIN) X 20" WIDE (MIN) OPENING AND 5.7 SQ.FT. (MIN) NET CLEAR OPENING.
7. PROVIDE VENTILATION TO ALL BATHS AND UTILITY ROOMS THROUGH NATURAL OR MECHANICAL MEANS AND COMPLY WITH 2012 IRC.
8. FINAL LOCATION OF ALL A/C COMPRESSORS, ELECTRIC METER, GAS METER, PHONE, CABLE, ETC, MAY VARY DUE TO FIELD CONDITIONS.
9. SHOWER STALLS AND TUB WALLS SHALL BE FINISHED WITH NON-ABSORBENT SURFACE TO A HEIGHT NOT LESS THAN 70" ABOVE THE DRAIN INLET OVER A CONCRETE BACKER BOARD.
10. ALL WINDOWS AT FIRST FLOOR LEVEL TO BE A MINIMUM OF 18" ABOVE FINISHED FLOOR UNLESS NOTED OTHERWISE. ALL WINDOWS AT SECOND FLOOR LEVEL TO BE A MINIMUM OF 24" ABOVE FINISHED FLOOR UNLESS NOTED OTHERWISE.
11. 2012 IRC, 311.2.2 - ENCLOSED ACCESSIBLE SPACE UNDER STAIRS SHALL HAVE WALLS, UNDER STAIR SURFACE AND ANY SOFFITS PROTECTED ON THE ENCLOSED SIDE WITH 1/2 INCH GYPSUM BOARD.
12. 2012 IRC, R311.5.1 - STAIRWAYS SHALL NOT BE LESS THAN 36 INCHES IN CLEAR WIDTH AT ALL POINTS ABOVE THE PERMITTED HANDRAIL HEIGHT AND BELOW THE REQUIRED HEADROOM HEIGHT. HANDRAILS SHALL NOT PROJECT MORE THAN 4.5 INCHES ON EITHER SIDE OF THE STAIRWAY AT AND BELOW THE HANDRAIL HEIGHT, INCLUDING TREADS AND LANDINGS, SHALL NOT BE LESS THAN 31.5 INCHES WHERE A HANDRAIL IS INSTALLED ON ONE SIDE AND 27 INCHES WHERE HANDRAILS ARE PROVIDED ON BOTH SIDES.
13. 2012 IRC, R311.5.6 - HANDRAILS SHALL BE PROVIDED ON AT LEAST ONE SIDE OF EACH CONTINUOUS RUN OF TREADS OR FLIGHT WITH FOUR OR MORE RISERS.
14. 2012 IRC, R311.5.6.1 - HANDRAIL HEIGHT, MEASURED VERTICALLY FROM THE SLOPED PLAN ADJOINING THE TREAD NOSING, OR FINISH SURFACE OF RAMP SLOPE, SHALL NOT BE LESS THAN 34 INCHES AND NOT MORE THAN 38 INCHES.
15. 2012 IRC, R311.5.6.2 - HANDRAILS FOR STAIRWAYS SHALL BE CONTINUOUS FOR THE FULL LENGTH OF THE FLIGHT, FROM A POINT DIRECTLY ABOVE THE TOP RISER OF THE FLIGHT TO A POINT DIRECTLY ABOVE THE LOWEST RISER OF THE FLIGHT. HANRAIL ENDS SHALL BE RETURNED OR SHALL TERMINATE IN NEWEL POSTS OR SAFETY TERMINALS. HANDRAILS ADJACENT TO A WALL SHALL HAVE SPACE OF NOT LESS THAN 1-1/2 INCH BETWEEN THE WALL AND HANDRAILS.
16. 2012 IRC, R312.2 - REQUIRED GUARDS ON OPEN SIDES OF STAIRWAYS, RAISED FLOOR AREAS, BALCONIES AND PORCHES SHALL HAVE INTERMEDIATE RAILS OR ORNAMENTAL CLOSURES WHICH DO NOT ALLOW PASSAGE OF A SPHERE 4 INCHES OR MORE IN DIAMETER. EXCEPTION 1 - THE TRIANGULAR OPENINGS FORMED BY THE RISER, TREAD AND BOTTOM RAIL OF A GUARD AT THE OPEN SIDE OF A STAIRWAY ARE PERMITTED TO BE OF SUCH A SIZE THAT A SPHERE 6 INCHES CANNOT PASS THROUGH. EXCEPTION 2 - OPENINGS FOR REQUIRED GUARDS ON THE SIDES OF STAIR TREADS SHALL NOT ALLOW A SPHERE 4-3/8 INCHES TO PASS THROUGH.
17. 2012 IRC, R311.5.3.1 - THE MAXIMUM RISER HEIGHT SHALL BE 7-3/4 INCHES. THE RISER SHALL BE MEASURED VERTICALLY BETWEEN LEADING EDGES OF THE ADJACENT TREADS. THE GREATEST RISER HEIGHT WITHIN ANY FLIGHT OF STAIRS SHALL NOT EXCEED THE SMALLEST BY MORE THAN 3/8 INCH.
18. 2012 IRC, R301.5, FOOTNOTE D - HANDRAILS AND GUARDS SHALL BE DESIGNED FOR A MINIMUM 200LB LIVE LOAD AND A SINGLE CONCENTRATED LOAD APPLIED IN ANY DIRECTION AT ANY POINT ALONG THE TOP.

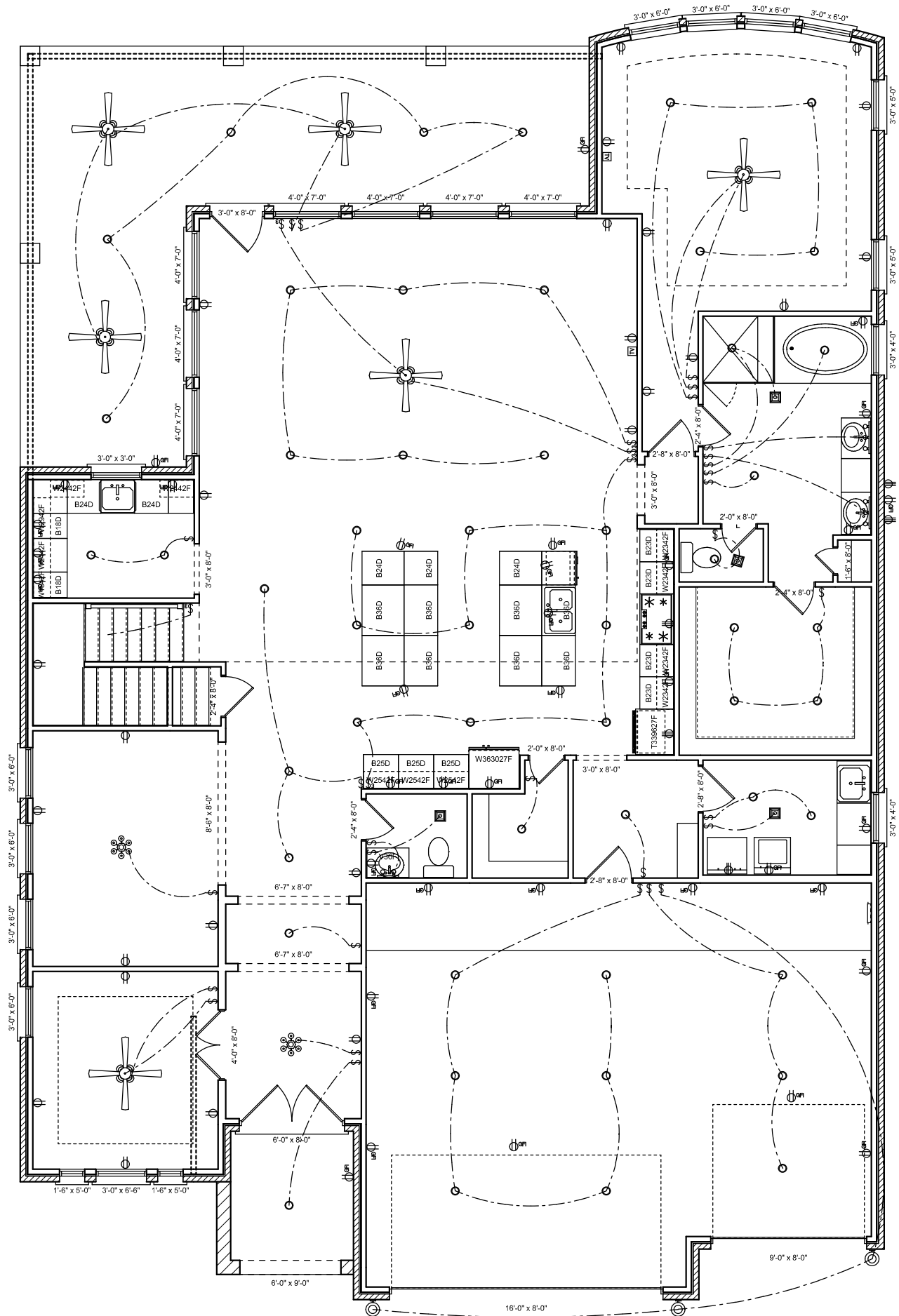


2ND FLOOR PLAN

NO	DATE	COMMENTS

DRAWN BY: **Malibu Drafting & Design**
 281-210-6858
 DATE: 09/25/2017
 SCALE: 1/8"=1'-0" ON 11"x17" SHEET

PLAN:
 ~SHEET~



ELECTRICAL PLAN

ELECTRICAL	COUNT	SYMBOL
ceiling fan with light kit	6	
exterior light 5	3	
2-LT VANITY	1	
3-LT VANITY	2	
chandelier	2	
exhaust fan	4	
recess can	52	
electrical panel	1	
cable tv outlet	2	
outlet	25	
outlet 220v	5	
outlet gfi	36	
switch	30	
switch 3 way	5	

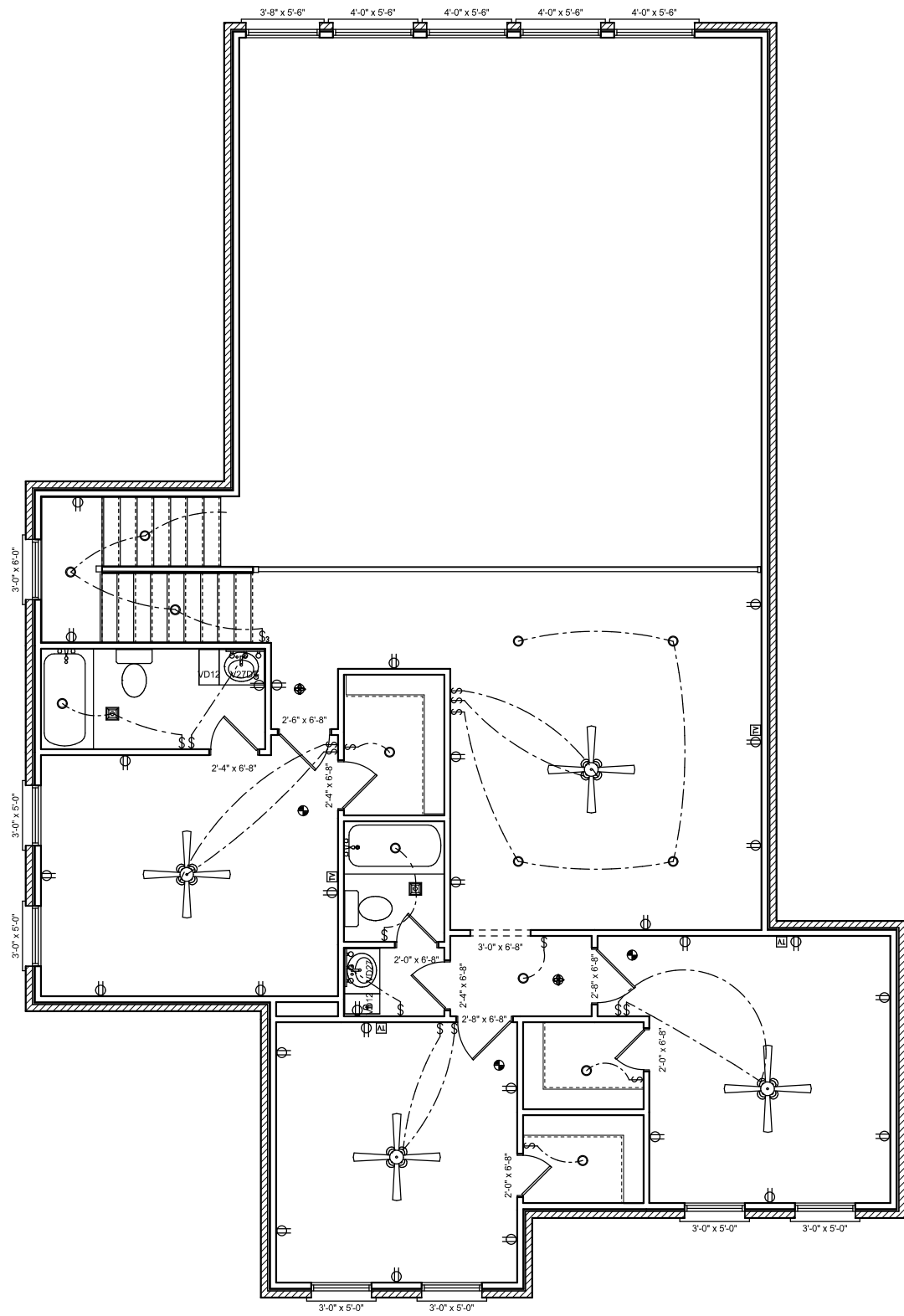
ELECTRICAL NOTES

1. SMOKE DETECTORS ARE TO BE INTERCONNECTED WITH BATTERY BACKUP
2. 8 GENERAL OUTLETS PER CIRCUIT
3. 14/2 W.G. ON ALL GENERAL CIRCUITS
4. 14/2 W.G. MAY BE USED FOR SWITCH LEGS ONLY
5. LIGHTS OVER SHOWERS TO BE PROTECTED
6. CANNOT BE ABLE TO REACH 5' MIN. ELECTRICAL SWITCH OR OUTLET FROM TUB OR SHOWER
7. ALL OUTLETS TO BE ARC FAULT PROTECTED
8. ALL RECEPTICALS TO BE TAMPER RESISTANT
9. IN COMPLIANCE WITH 2009 IRC / 2008 NEC CODES
10. LIGHT SWITCHES & PLUGS TO BE STANDARD HEIGHT
11. PROVIDE CHRISTMAS PLUGS AT SOFFITS

R	NO	DATE	COMMENTS

DRAWN BY:
Malibu Drafting & Design
281-210-6858
 DATE: 09/25/2017
 SCALE: 1/8"=1'-0" ON 11"x17" SHEET

PLAN:



ELECTRICAL PLAN

ELECTRICAL	COUNT	SYMBOL
ceiling fan with light kit	4	
3-LT VANITY	2	
exhaust fan	2	
recess can	13	
cable tv outlet	4	
outlet	27	
outlet gfi	2	
smoke detector	3	
smoke-carbon combo	2	
switch	17	
switch 3 way	1	

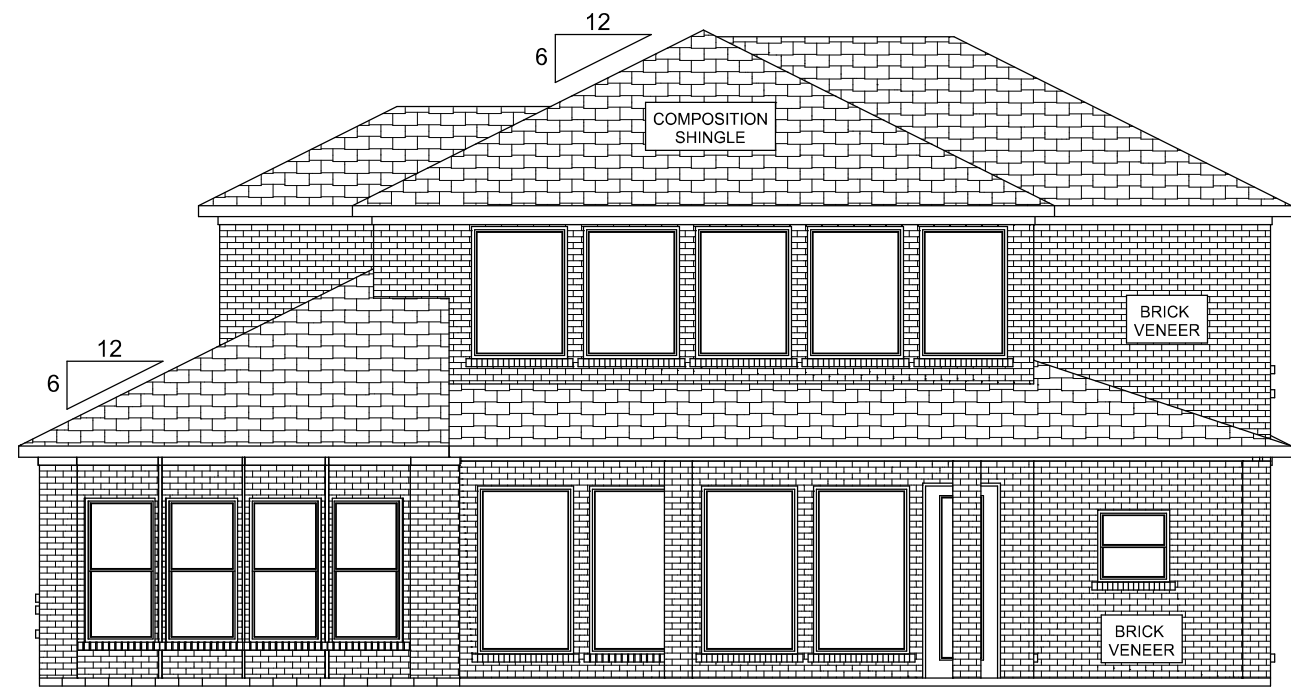
NO	DATE	COMMENTS

DRAWN BY:
Malibu Drafting & Design
 281-210-6858
 DATE: 09/25/2017
 SCALE: 1/8"=1'-0" ON 11"x17" SHEET

PLAN:



FRONT ELEVATION

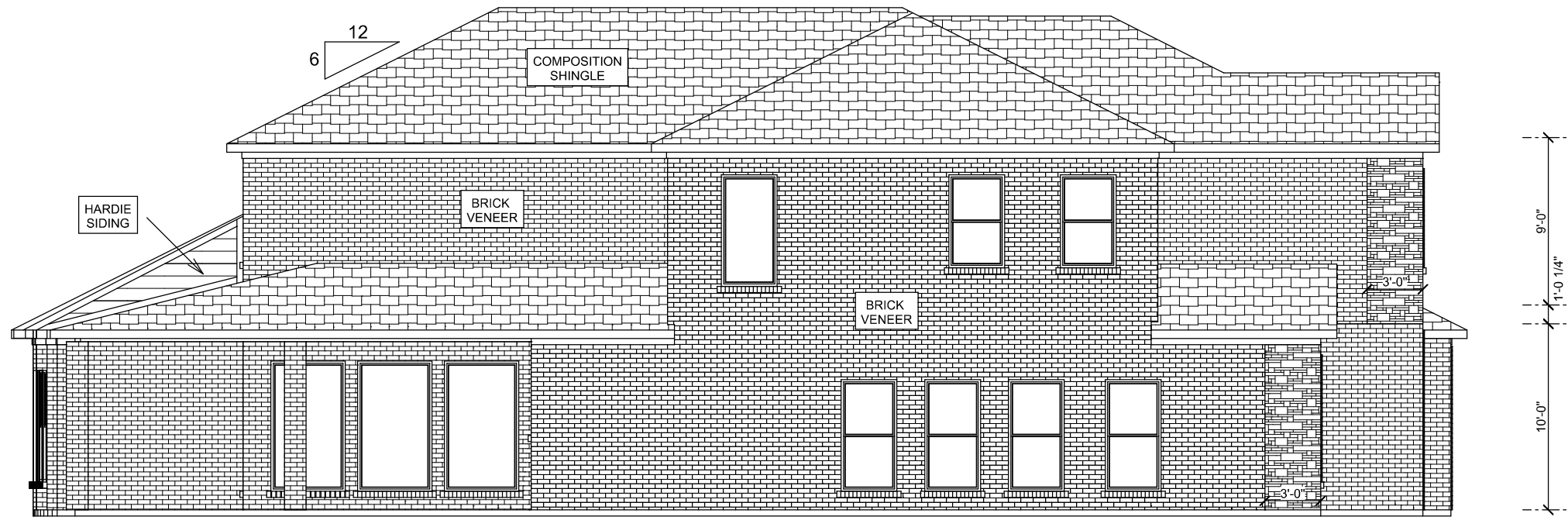


REAR ELEVATION

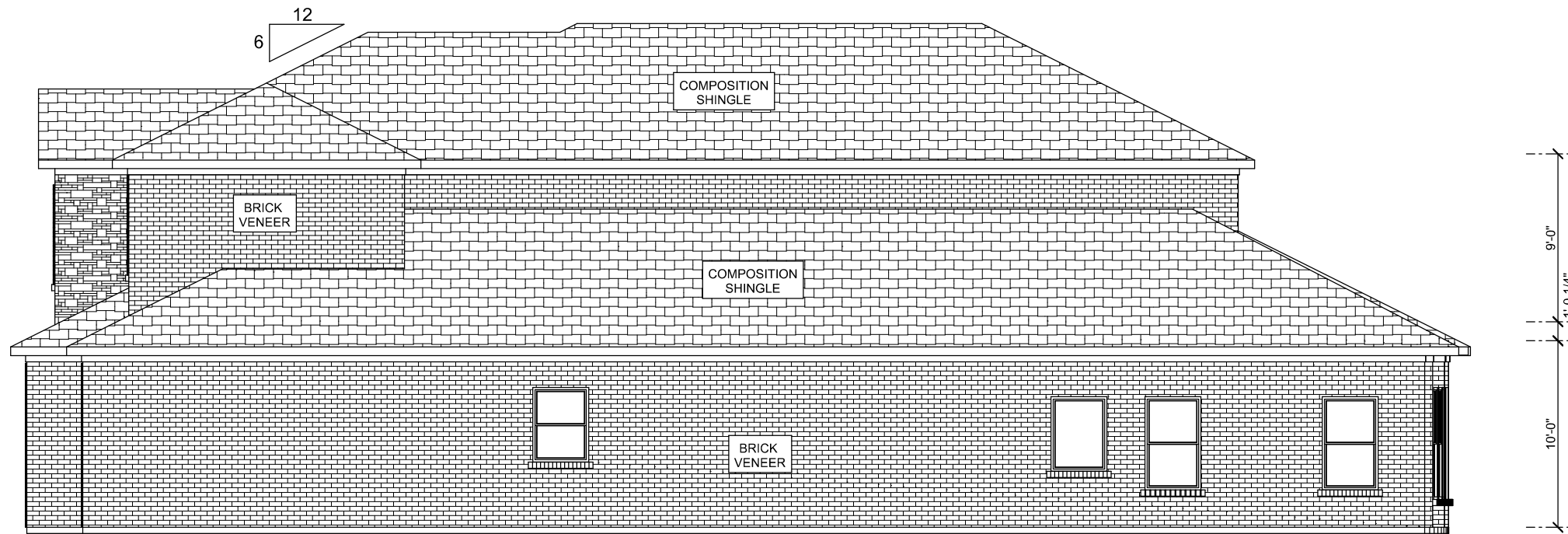
REV	NO	DATE	COMMENTS

DRAWN BY:
Malibu Drafting & Design
 281-210-6858
 DATE: 09/25/2017
 SCALE: 1/8"=1'-0" ON 11"x17" SHEET

PLAN:
 ~SHEET~



LEFT ELEVATION



RIGHT ELEVATION

REVISIONS

NO. DATE COMMENTS

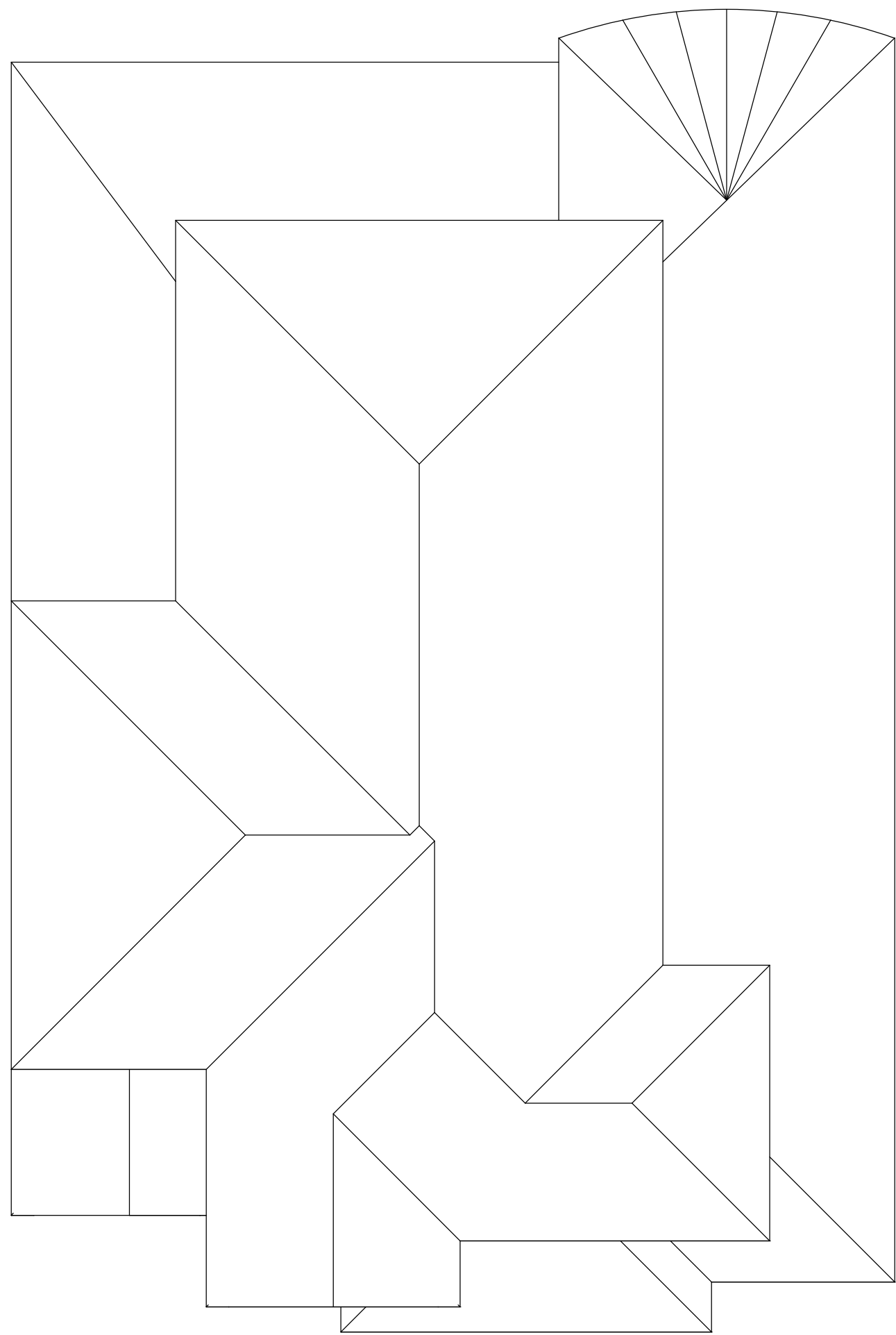
DRAWN BY:
Malibu Drafting & Design
281-210-6858

DATE: 09/25/2017

SCALE: 1/8"=1'-0" ON 11"x17" SHEET

PLAN:

~SHEET~



ROOF PLAN

PLAN:

~ SHEET ~

DRAWN BY:
Malibu Drafting & Design
281-210-6658
 DATE: 09/25/2017
 SCALE: 1/8"=1'-0" ON 11"x17" SHEET

REV	NO	DATE	COMMENTS