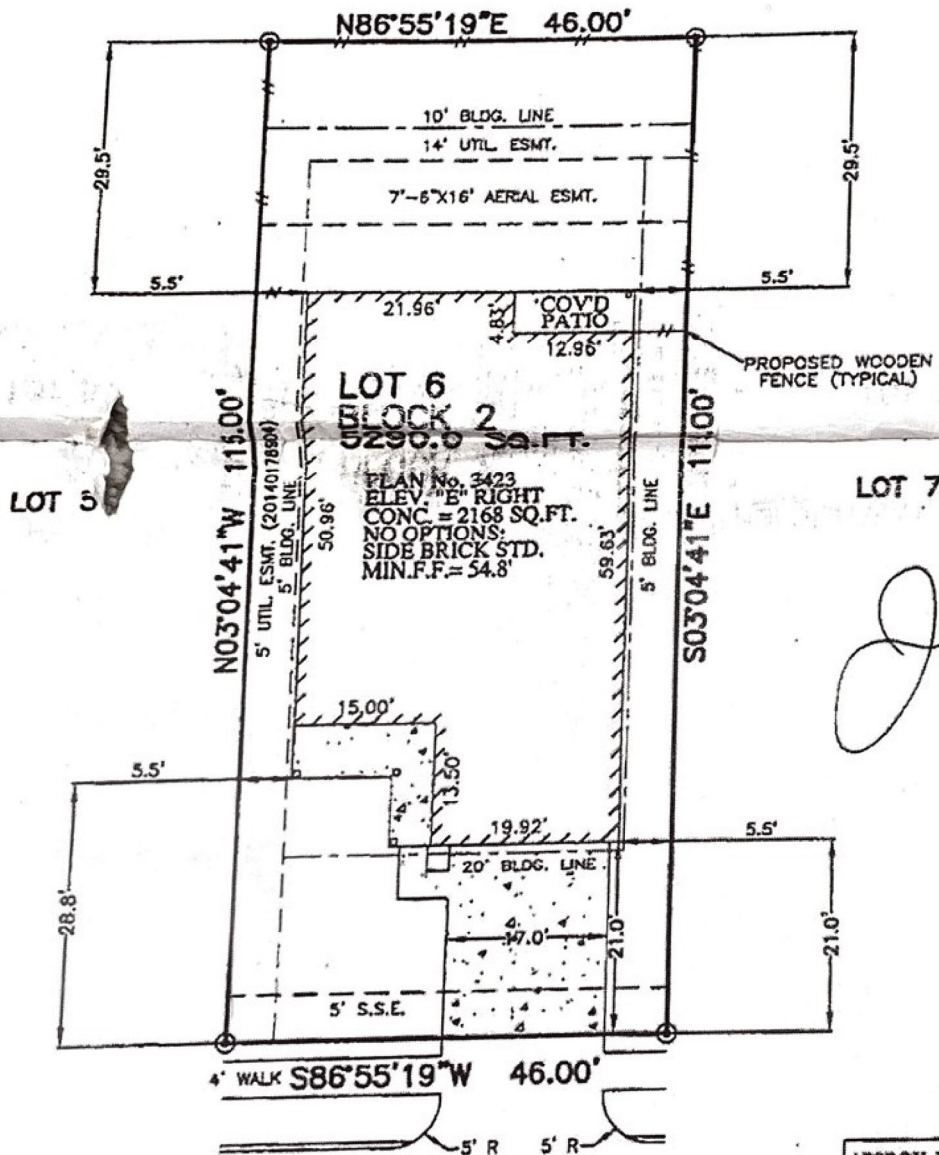


LANDSCAPE/ OPEN SPACE



3239 NORVILLE LANE
(50' R.O.W.)
28' CONCRETE PAVEMENT

PRELIMINARY ONLY

PLOT PLAN

SCALE: 1" = 20'

APPROX. LOT COVERAGE: 40.98%	
FENCE (LIN. FT.)	121.0 L.F.
HOUSE AREA	2168.6 SQ. FT.
FRONT SOD:	79 SQ. YD.
BACK SOD:	153 SQ. YD.
LEFT SOD:	35 SQ. YD.
RIGHT SOD:	37 SQ. YD.
R.O.W. SOD:	22 SQ. YD.
TOTAL SOD:	326 SQ. YD.
A.C. PAD	16 SQ. FT.
PRIVATE WALK	25 SQ. FT.
PUBLIC WALK	116 SQ. FT.
DRIVEWAY	357 SQ. FT.
IN-TURN	194 SQ. FT.

NOTES:
1. ALL BEARINGS SHOWN HEREON ARE BASED ON THE RECORDED PLAT.
2. THIS PLOT PLAN WAS PREPARED WITHOUT THE BENEFIT OF A TITLE REPORT. THERE MAY BE EASEMENTS, BUILDING LINES & OTHER MATTERS OF RECORD NOT SHOWN HEREON. SURVEYOR ALL POINTS SERVICES CORP. IS NOT LIABLE FOR ANY DAMAGES THAT MAY INCUR IN ANY PROJECT THE BUILDER BUILDS ANY IMPROVEMENTS MORE THAN 5.0' OR WITHIN AN EASEMENT.