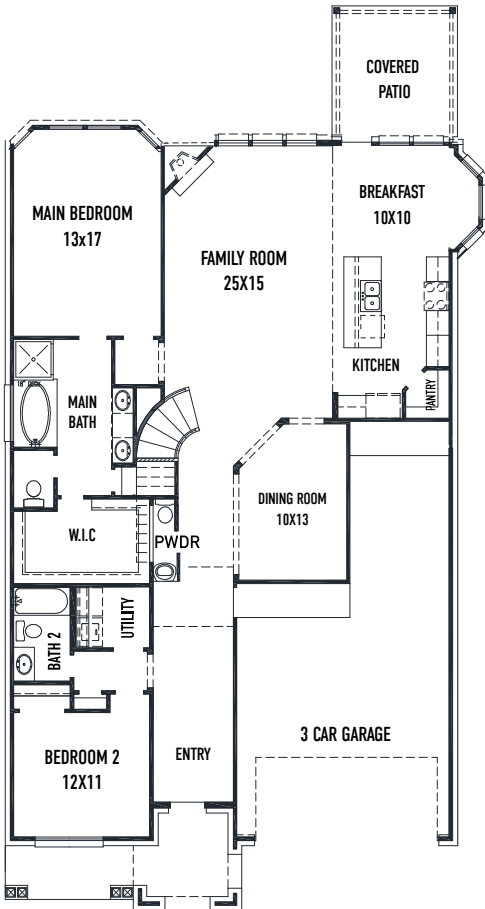


# N

## 8818 Spinning Mill Dr. - Linz Plan SIENNA 50' - Heritage Park - Section 32AB

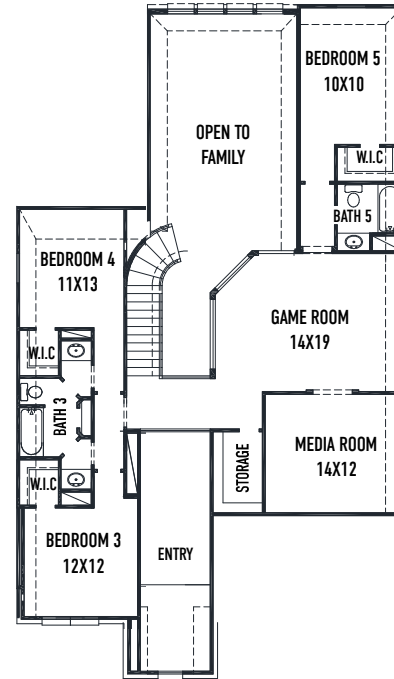
### NEW HOME COMING SOON!



FIRST FLOOR PLAN

### FEATURES

- 2 Story - Apx: 3200qft.
- 5 Bedrooms - 4.5 Bathrooms
- Tandem 3 Car Garage
- 7224 sqft. Homesite
- Estimated Completion: Mar. 2022



SECOND FLOOR PLAN

- Stunning front elevation w/ brick on 1st floor sides/back
- Built in appliances w/ a 5 burner cook-top & glass canopy vent hood
- Upgraded Modern 42" kitchen cabinetry w/ hardware
- Quartz countertops in the kitchen and bathrooms
- Elegant 6 x 26 wood look tile in the main living areas
- Upgraded 8' front door w/ privacy granite glass
- THE NEWMARK STANDARD IN SIENNA
- Open cell spray foam insulation
- 16 seer duel stage HVAC system
- Full sprinkler system & sod
- Full rain gutters
- 3rd party inspections (Foundation, frame, energy, final)

REV 11/20 (5015)



These drawings are conceptual only and are for the convenience of reference. They should not be relied upon as representations, express or implied, of the final detail of the residences. The builder expressly reserves the right to make modifications, revisions, and changes it deems desirable in its sole and absolute discretion. Dimensions and square footages are approximate and may vary with actual construction.

**NEWMARK**  
HOMES

[newmarkhomes.com](http://newmarkhomes.com)