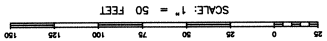


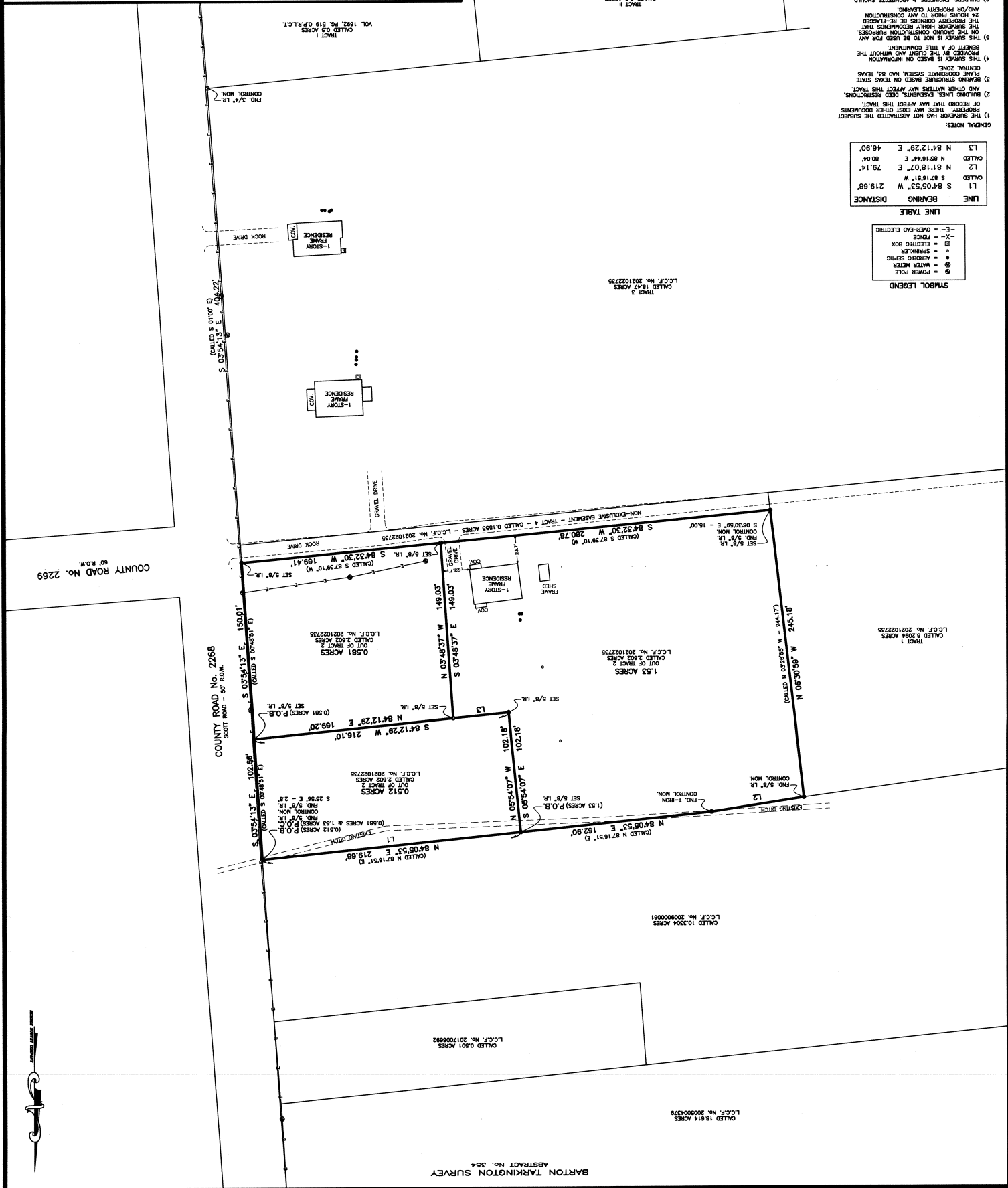
Surveyed by: EE-JP  
 Date: 7-30-2021  
 Scale: 1" = 50'  
 File Name: 21-228.dwg  
 Job Name: R.P.L.S. NO. 5815  
 Copyright © 2020 All Rights Reserved  
 (201) 444-1118 Fax (201) 562-7136  
 Humble Surveying Company  
 709 South Washington Avenue Suite B  
 Cleveland, TX 77327



LOUIS W. BERGMAN IV  
 R.P.L.S. NO. 5815  
 I HEREBY CERTIFY THAT THIS PLAN IS TRUE  
 AND CORRECT TO THE BEST OF MY KNOWLEDGE  
 AND BELIEF AS SURVEYED ON THE GROUND.  
 JULY 7, 2021.



DESCRIPTION OF PROPERTY: 409 COUNTY ROAD 2288, CLEVELAND, TX 77327  
 0.512 ACRES, 0.581 ACRES & 1.53 ACRES, BEING OUT OF A CALLED 2.602 ACRE TRACT, CALLED TRACT 2 AS RECORDED IN LIBERTY  
 COUNTY CLERK'S FILE NO. 2021022735 & BEING SITUATED IN THE BARTON TARKINGTON SURVEY, A-354, LIBERTY COUNTY, TEXAS.



GENERAL NOTES:  
 1) THE SURVEYOR HAS NOT ASSUMED THE SUBJECT PROPERTY, THERE MAY BE OTHER DOCUMENTS OF RECORD THAT MAY AFFECT THE SUBJECT BUILDING LINES, EASEMENTS, DEED RESTRICTIONS, ETC. AND OTHER MATTERS MAY AFFECT THE TRACT.

SYMBOL LEGEND

- = POWER POLE
- ⊙ = WATER WHEEL
- ⊕ = SPRINKLER
- ⊗ = ELECTRIC BOX
- ⊘ = TANK
- ⊚ = OVERHEAD ELECTRIC

LINE TABLE

LINE	BEARING	DISTANCE
L1	S 87°05'53" W	219.68'
L2	N 81°18'07" E	79.14'
L3	N 84°12'29" E	46.90'

Surveyed by: EE-JP  
 Date: 7-30-2021  
 Scale: 1" = 50'  
 File Name: 21-228.dwg  
 Job Name: R.P.L.S. NO. 5815  
 Copyright © 2020 All Rights Reserved  
 (201) 444-1118 Fax (201) 562-7136  
 Humble Surveying Company  
 709 South Washington Avenue Suite B  
 Cleveland, TX 77327

BARTON TARKINGTON SURVEY  
 ABSTRACT NO. 354  
 L.C.C.F. NO. 2017000682  
 CALLED 0.501 ACRES

L.C.C.F. NO. 2020004379  
 CALLED 18.814 ACRES

L.C.C.F. NO. 2009000081  
 CALLED 10.304 ACRES

L.C.C.F. NO. 2021022735  
 CALLED 2.602 ACRES

L.C.C.F. NO. 2021022735  
 CALLED 18.814 ACRES

L.C.C.F. NO. 2021022735  
 CALLED 18.814 ACRES

L.C.C.F. NO. 2021022735  
 CALLED 18.814 ACRES

L.C.C.F. NO. 2021022735  
 CALLED 2.602 ACRES

L.C.C.F. NO. 2021022735  
 CALLED 18.814 ACRES

L.C.C.F. NO. 1882, P.O.B. 918  
 CALLED 0.5 ACRES

L.C.C.F. NO. 1882, P.O.B. 918  
 CALLED 0.5 ACRES

L.C.C.F. NO. 1882, P.O.B. 918  
 CALLED 0.5 ACRES

L.C.C.F. NO. 1882, P.O.B. 918  
 CALLED 0.5 ACRES

L.C.C.F. NO. 1882, P.O.B. 918  
 CALLED 0.5 ACRES

L.C.C.F. NO. 1882, P.O.B. 918  
 CALLED 0.5 ACRES

L.C.C.F. NO. 1882, P.O.B. 918  
 CALLED 0.5 ACRES

L.C.C.F. NO. 1882, P.O.B. 918  
 CALLED 0.5 ACRES

L.C.C.F. NO. 1882, P.O.B. 918  
 CALLED 0.5 ACRES

L.C.C.F. NO. 1882, P.O.B. 918  
 CALLED 0.5 ACRES

L.C.C.F. NO. 1882, P.O.B. 918  
 CALLED 0.5 ACRES

L.C.C.F. NO. 1882, P.O.B. 918  
 CALLED 0.5 ACRES

L.C.C.F. NO. 1882, P.O.B. 918  
 CALLED 0.5 ACRES

L.C.C.F. NO. 1882, P.O.B. 918  
 CALLED 0.5 ACRES

L.C.C.F. NO. 1882, P.O.B. 918  
 CALLED 0.5 ACRES

L.C.C.F. NO. 1882, P.O.B. 918  
 CALLED 0.5 ACRES

L.C.C.F. NO. 1882, P.O.B. 918  
 CALLED 0.5 ACRES

L.C.C.F. NO. 1882, P.O.B. 918  
 CALLED 0.5 ACRES

L.C.C.F. NO. 1882, P.O.B. 918  
 CALLED 0.5 ACRES

L.C.C.F. NO. 1882, P.O.B. 918  
 CALLED 0.5 ACRES

L.C.C.F. NO. 1882, P.O.B. 918  
 CALLED 0.5 ACRES

L.C.C.F. NO. 1882, P.O.B. 918  
 CALLED 0.5 ACRES

L.C.C.F. NO. 1882, P.O.B. 918  
 CALLED 0.5 ACRES

L.C.C.F. NO. 1882, P.O.B. 918  
 CALLED 0.5 ACRES

L.C.C.F. NO. 1882, P.O.B. 918  
 CALLED 0.5 ACRES

L.C.C.F. NO. 1882, P.O.B. 918  
 CALLED 0.5 ACRES

L.C.C.F. NO. 1882, P.O.B. 918  
 CALLED 0.5 ACRES

L.C.C.F. NO. 1882, P.O.B. 918  
 CALLED 0.5 ACRES

L.C.C.F. NO. 1882, P.O.B. 918  
 CALLED 0.5 ACRES

L.C.C.F. NO. 1882, P.O.B. 918  
 CALLED 0.5 ACRES

L.C.C.F. NO. 1882, P.O.B. 918  
 CALLED 0.5 ACRES

L.C.C.F. NO. 1882, P.O.B. 918  
 CALLED 0.5 ACRES

L.C.C.F. NO. 1882, P.O.B. 918  
 CALLED 0.5 ACRES

L.C.C.F. NO. 1882, P.O.B. 918  
 CALLED 0.5 ACRES