

single hung window - screen w/ armoire  
 furnace location - floor ducting?  
 counter tops -  
 water heater location

9'5" x 13'

Berber carpet  
 33" twin beds  
 on metal  
 frame with  
 rollers  
 blinds  
 vertical or  
 mini  
 phone & TV jacks  
 ceiling



elec plugs - where +  
 how many

ceiling fan prep -  
 depth of bay - dining room

# One, Two & Three Bedroom Models

sliding door  
 3' + from front

sketcher + bathroom  
 porcelain sink - single lever  
 fluorescent - chandelier

sofa bed  
 table - chair

dining table +  
 chairs

shower door not curtain

insulation  
 place for microwave on cabinet

brand stove +  
 refrig

windows -  
 in bedroom  
 open?



1-800-33-  
 Danny Schmitt  
 Jim

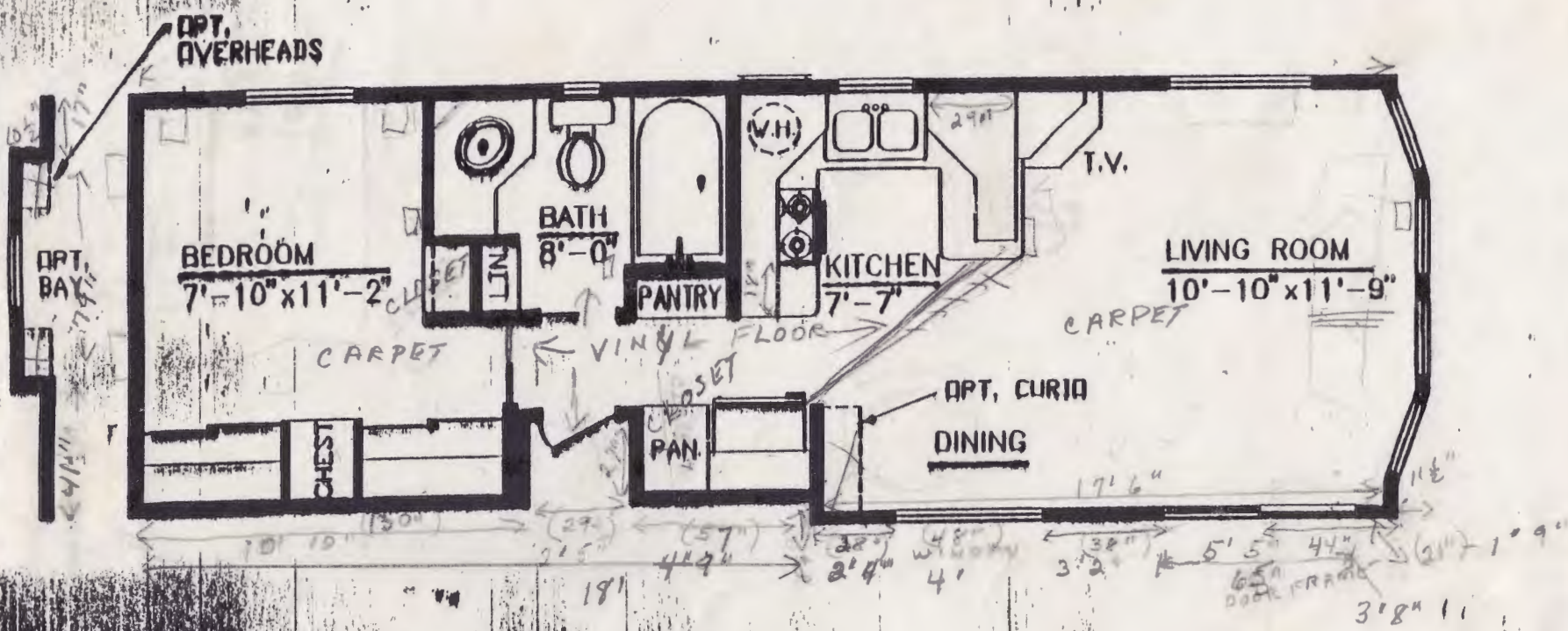
14' 6"

Builders of Fine R.V. Park Models & Vacation Homes  
 931 N.W. 37th Avenue • Ocala, Florida 34475  
 (904) 629-7007 • FAX (904) 629-6920





color of cabinet tops ?  
 how deep in dining room series ?  
 furnace - location ? in cabinet ?



**MODEL A2957-34'3"**  
**LENGTH 34'-3" X WIDTH 11'-2"**



12/22/06 WAW  
 P.O. 00100



*Neighbors  
James & Sylvia  
Morgan*

Welcome To

# RAINBOW'S END

LIVINGSTON, TEXAS

2015



**ESCAPEESRVClub** | RAINBOW PARKS

140 Escapees Dr. • Livingston, TX 77351 • 936-327-1279 • Fax: 936-328-8168

[www.escapees.com](http://www.escapees.com)





& Rye



### Legend

- 30 AMP Sites
- 50 AMP Sites
- Premium Sites
- ERPU Sites
- Long Term Sites
- Care Center Sites
- Deeded Lots
- Dumpster
- Comfort Station
- Showers
- Laundry
- Swimming Pool
- Dump Station
- Parking
- Dog Park

- Activity Center..... **AC**
- Care Center..... **CC**
- Clubhouse..... **CH**
- Headquarters..... **HQ**
- Maintenance Barn..... **MB**
- Manager's Office..... **MO**
- Smart Weigh..... **SW**
- South Laundry..... **SL**

Please let the Park Manager know if you plan to leave your rig unattended for more than 24 hours.

**Save our Septic Systems:** Please do not use chemicals (formaldehyde, phosphorus or disinfectants) during your stay.

To help keep Park cost down, and since the Park is on a septic system, we ask that you refrain from using washing machines in your rig. When flushing holding tanks, please limit your flushing to one minute. Thank you for your help.

**Motorhomers unhook and hook up your "towed" vehicles in the street.**

**Generator Hours: 7:30 a.m. to 9:00 a.m.; 11:30 a.m. to 12:30 p.m.; and, 4:00 p.m. to 7:00 p.m.**

*Escape* to the open road  
Life is Calling

### Let Us Weigh Your RV

RV weighing is available at Rainbow's End SW, North Ranch, and Sumter Oaks!

For available dates and times, contact the Headquarters Office, call 936-327-8873, or visit [www.escapes.com/smartweigh](http://www.escapes.com/smartweigh)

### SmartWeigh

ESCAPEESRV Club

Accurate individual wheel weights for your RV, toad, and tow vehicle.