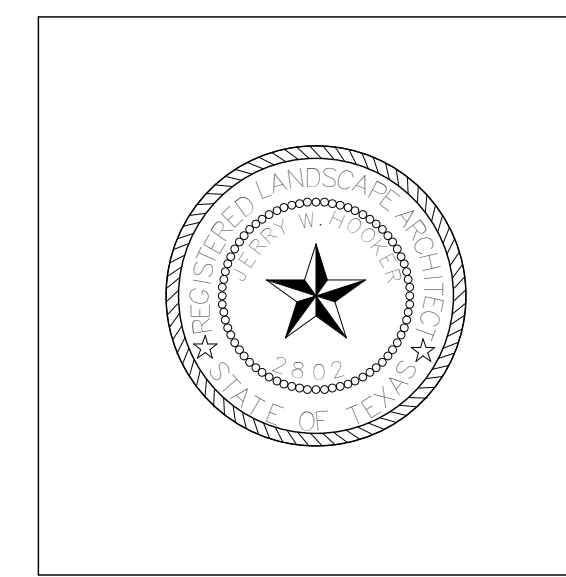


REVISION ISSUES		
NO.	DATE	DESCRIPTION
1	AUG. 16, 2016	LANDSCAPE DESIGN DEVELOPMENT

Confidential - These drawings are the sole property of the Mirador Group. No part of these drawings shall be used, copied, or distributed by any person including the client without the prior written permission of the Mirador Group. © 2014



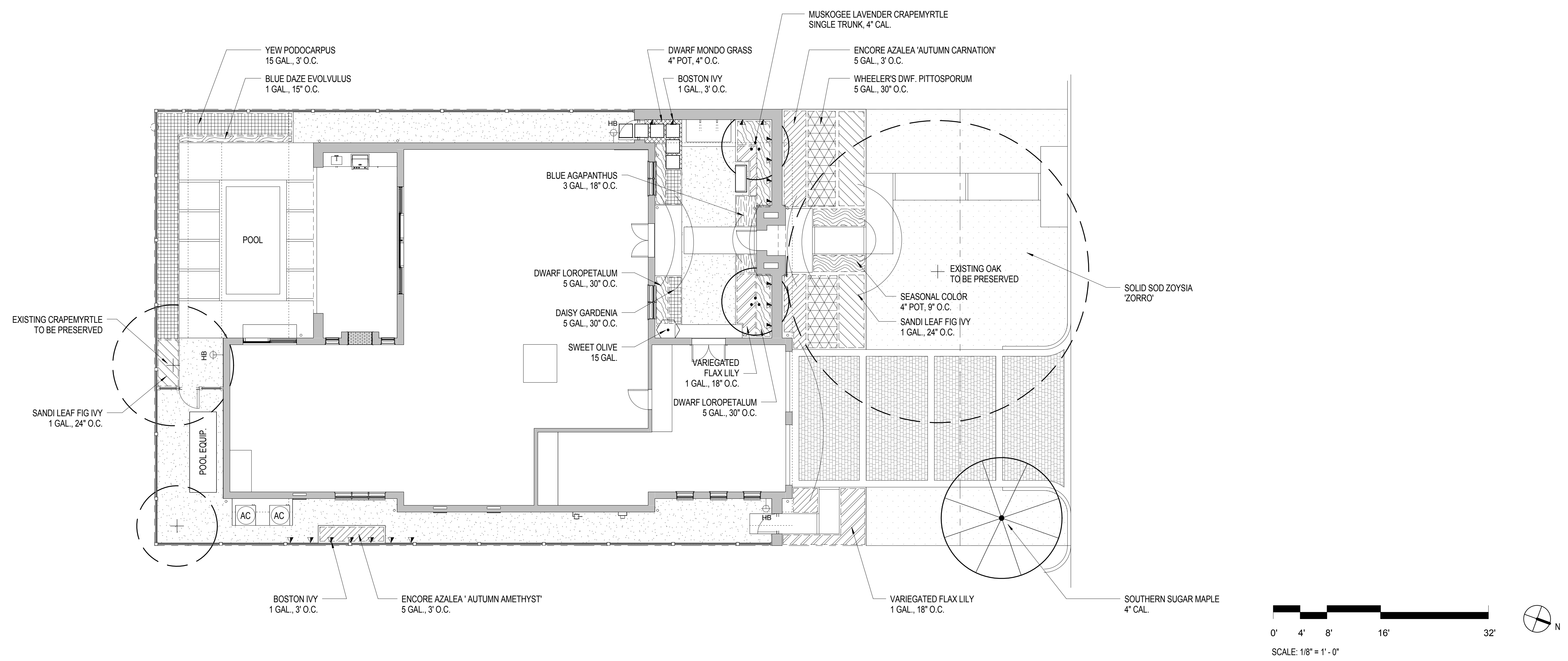
4543 SHETLAND LANE
HOUSTON, TX 77027

mirador group
 6575 West Loop South
 Suite 650
 Bellaire, Texas 77401
 p.713.626.4770
 f.713.661.6606

PROJECT NO:	16-142
4543 SHETLAND LANE	
PROJECT ISSUE DATE:	AUG. 16, 2016
DRAWN BY: FY	CHECKED BY: FY
FILE NAME:	LANDSCAPE_SPH.rvt

PLANTING PLAN

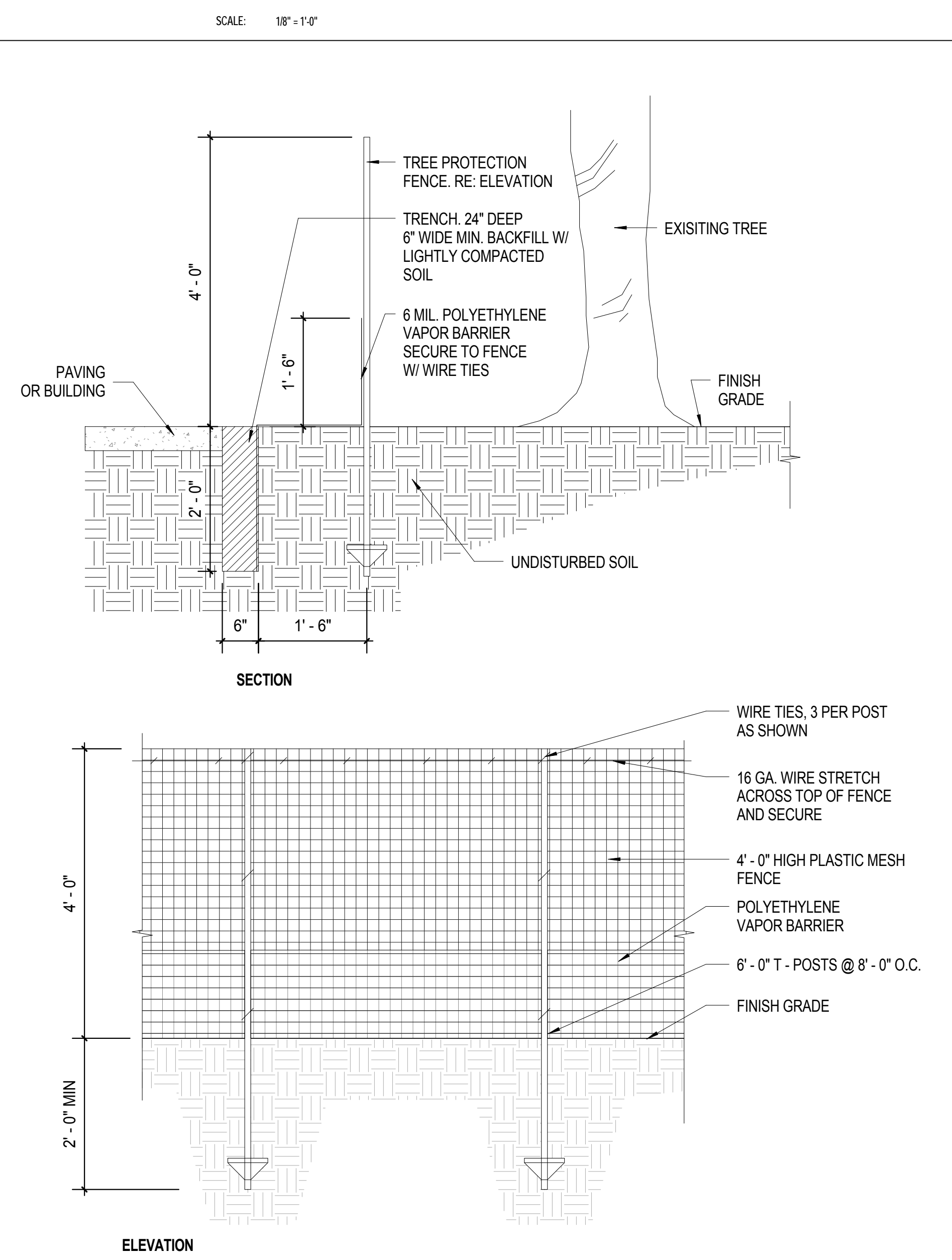
L-601



28 PLANTING PLAN

1. CONTRACTOR SHALL NOT ALLOW ANY VEHICULAR TRAFFIC, PARKING OF VEHICLES, OR STOCKPILING OF EXCAVATED MATERIAL OR CONSTRUCTION MATERIALS INSIDE OF TREE PROTECTION FENCING OR THE DRIPLINE OF TREES INDICATED TO BE PRESERVED.
2. CONSTRUCTION EQUIPMENT MAY OPERATE WITHIN THE DRIPLINE OF A TREE WHEN NECESSARY FOR PERFORMANCE OF INDICATED WORK. SUCH OPERATIONS SHALL BE CONDUCTED WITH SPECIAL CARE TO AVOID DAMAGING THE TREE.
3. WATER TREES INDICATED TO BE PRESERVED AS REQUIRED TO MAINTAIN THEIR HEALTHY GROWTH DURING THE COURSE OF CONSTRUCTION OPERATIONS.
4. PROTECT TREE ROOT SYSTEMS FROM DAMAGE DONE BY STRIPPING AND REGRADING. ALL EXCAVATION AND GRADING WORK SHALL BE DONE BY HAND TOOLS WHILE WORKING WITHIN TREE DRIPLINES.
5. PROTECT TREE ROOT SYSTEMS FROM DAMAGE DUE TO NOXIOUS MATERIALS IN SOLUTION CAUSED BY RUN-OFF OR SPILLAGE DURING MIXING AND PLACEMENTS OF CONSTRUCTION MATERIALS, OR DRAINAGE FROM STORED MATERIALS.
6. TREES PROTECTION FENCING IS TO BE INSTALLED PRIOR TO BEGINNING ANY WORK. FIELD VERIFY FENCE AND ROOT PRUNING TRENCH LOCATION WITH OWNER'S REPRESENTATIVE.
7. TREES AND SHRUBS DESIGNATED TO BE REMOVED SHALL BE REMOVED IN A SAFE SYSTEMATIC MANNER.
8. ALL TREES DESIGNATED FOR ROOT PRUNING SHALL BE TRIMMED IN ACCORDANCE WITH THE CLASS IV PRUNING.

16 TREE PROTECTION NOTES



6 TREE PROTECTION FENCE & ROOT PRUNING TRENCH

8/16/2016 3:26:11 PM