

# TOWNHOMES *at Lou Ellen*

2015/2017 A-F Lou Ellen Ln  
starting from the mid \$400s



modern farmhouse  
black stainless steel appliances/hardware  
soft close cabinets  
quartz countertops  
dry bar  
engineered wood or tile throughout  
large walk in closets  
mudroom  
zoned to Oak Forest Elementary  
no HOA  
close proximity to many entertaining spots

REIHERA  
HOME DEVELOPER | HOMES

ESTHER KIM

832-228-0555

[esther.kim@elliman.com](mailto:esther.kim@elliman.com)

 Douglas Elliman

## EXTERIOR FEATURES

- hardie siding
- slab on grade foundation
- full rain gutters
- 8ft mahogany entry door
- auto sense above garage lights
- balcony off 2nd floor
- low e double pane windows
- 2 car garage
- individual gates
- fenced backyard

## INTERIOR FEATURES

- 3/8" engineered wood floors
- porcelain tile
- crown moulding
- utility sink connections (B plan)
- recessed led lights
- ceiling fans
- prewired for surround sound
- owned and wired alarm system
- smart thermostat on 2nd floor
- 11 ft ceiling on 2nd floor

## KITCHEN FEATURES

- samsung black stainless appliances
- oversized island with cabinets (A plan)
- single basin stainless sink
- moen faucet
- undercabinet lighting
- drawer trash bin
- soft close cabinets and drawers
- oversized island
- double stacked cabinets to ceiling
- large appliance storage

## BEDROOM/BATHROOM FEATURES

- tray ceiling in primary bedroom
- built in shelves in closets
- large walk-in closets in primary
- moen faucets
- frameless shower in primary
- 2 shower heads in primary (B plan)
- tub/shower combo
- porcelain tile on floor and walls
- framed mirrors
- soaking tub in primary (A plan)



HOME DEVELOPER **REIHERA** HOMES

ESTHER KIM

832-228-0555

[esther.kim@elliman.com](mailto:esther.kim@elliman.com)

 **Douglas Elliman**

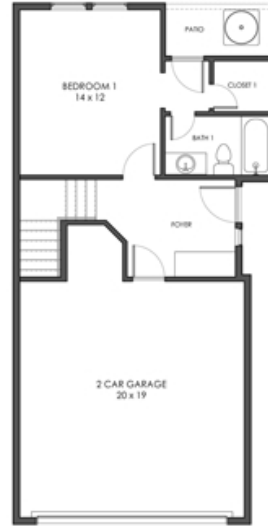


# TOWNHOMES

at Lou Ellen

2015/2017 A-F Lou Ellen Ln  
starting from the mid \$400s

PLAN A  
3 / 3.5  
2241 SQ FT



SITE PLAN

REIHERA  
HOME DEVELOPER | HOMES

ESTHER KIM  
832-228-0555  
esther.kim@elliman.com

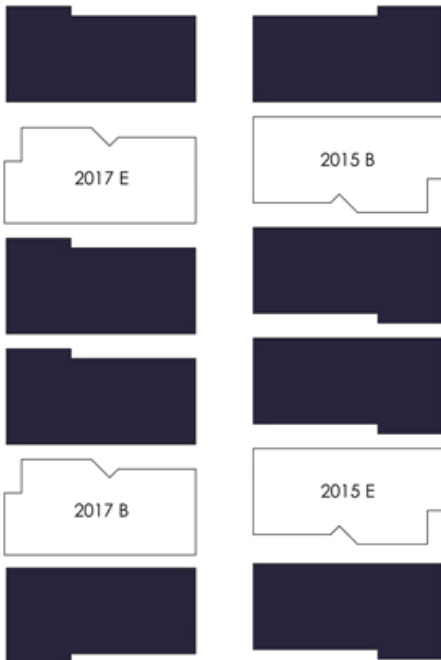
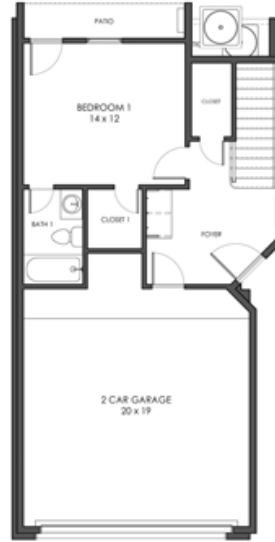
Douglas Elliman

# TOWNHOMES

at Lou Ellen

2015/2017 A-F Lou Ellen Ln  
starting from the mid \$400s

PLAN B  
3 / 3.5  
2245 SQ FT



SITE PLAN

REIHERA  
HOME DEVELOPER | HOMES

ESTHER KIM

832-228-0555

esther.kim@elliman.com

Douglas Elliman



# TOWNHOMES *at Lou Ellen*

2015/2017 A-F Lou Ellen Ln  
starting from the mid \$400s



REIHERA  
HOME DEVELOPER | HOMES

ESTHER KIM

832-228-0555

[esther.kim@elliman.com](mailto:esther.kim@elliman.com)

 Douglas Elliman