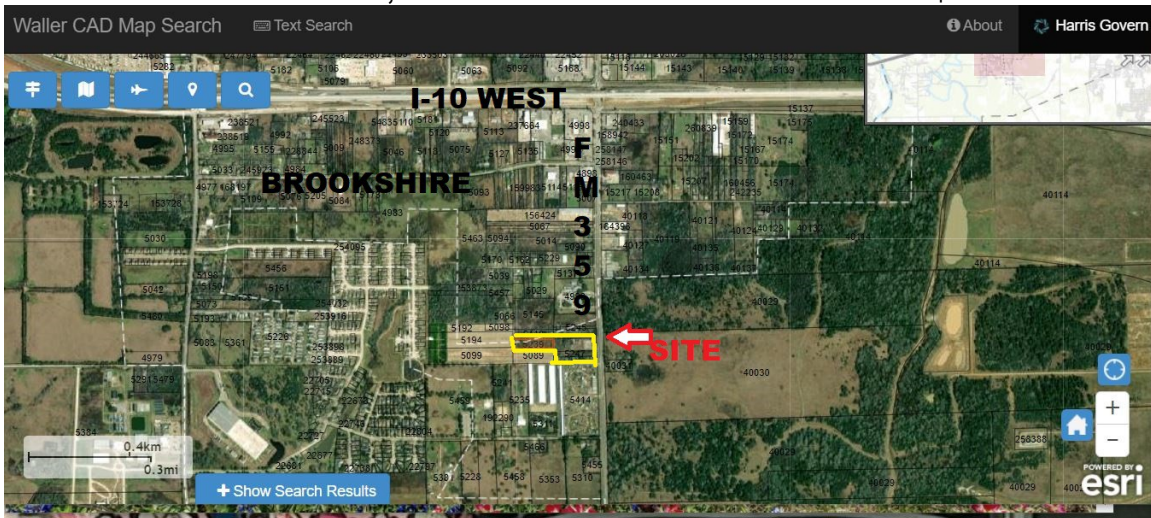




**COMMERCIAL & RESIDENTIAL REAL ESTATE**



**4.43 ACRES FM 359, BROOKSHIRE. ALL UTILITIES. LISTED AT \$975K.**



**WALLACE EVERITT, BROKER  
281-375-5575**

**[INFO@SOUTHWESTPROPERTIES.US](mailto:INFO@SOUTHWESTPROPERTIES.US)  
[WWW.SOUTHWESTPROPERTIES.US](http://WWW.SOUTHWESTPROPERTIES.US)**