



MODEL HOME ADDRESS
10217 LAS NUBES AVE.
HOUSTON, TX 77075

STONE & fields

RESIDENTIAL & COMMERCIAL BROKERAGE

WELCOME TO



Welcome to this beautiful new construction community of Windmill Lakes. This neighborhood is situated on the southeast side of Houston only minutes away from Interstate 45. Choose from 65 two story homes and three different floor plans.



3 UNIQUE FLOOR PLANS

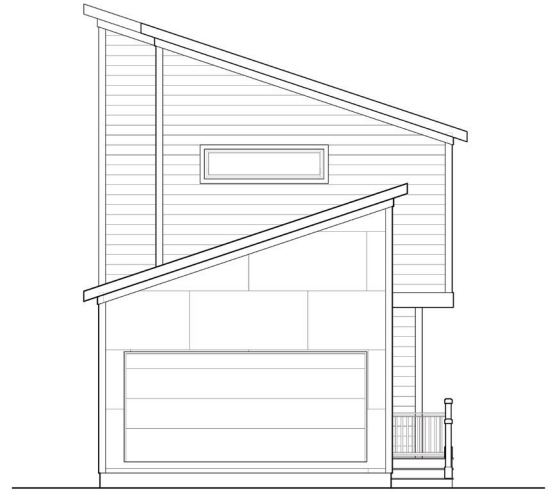


GIRONA

1,686 sq. ft.

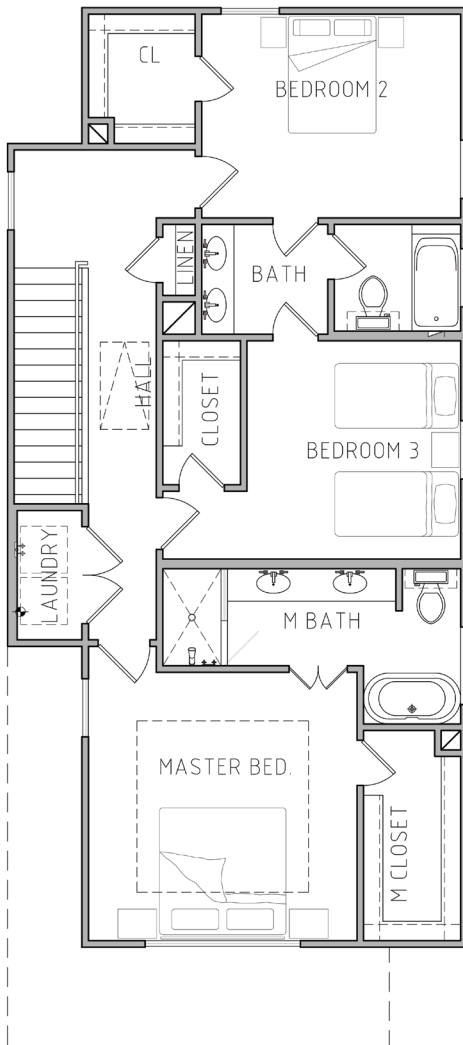
3 Bed • 2.5 Bath • 2 Car Garage

AREA CALCULATIONS	
FIRST FLOOR:	626 SQ. FT.
SECOND FLOOR:	1,060 SQ. FT.
TOTAL LIVING:	1,686 SQ. FT.
PORCH 1	31 SQ. FT.
GARAGE	403 SQ. FT.
TOTAL COVERED AREA	2,120 SQ. FT.



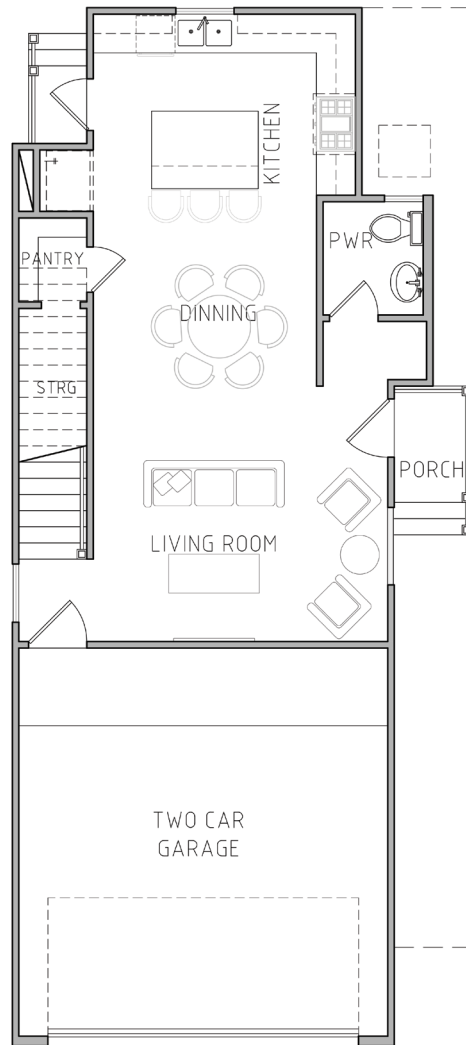
FRONT ELEVATION

Scale: 1/4"= 1'-0"



SECOND FLOOR PLAN

Scale: 1/4"= 1'-0"



FIRST FLOOR PLAN

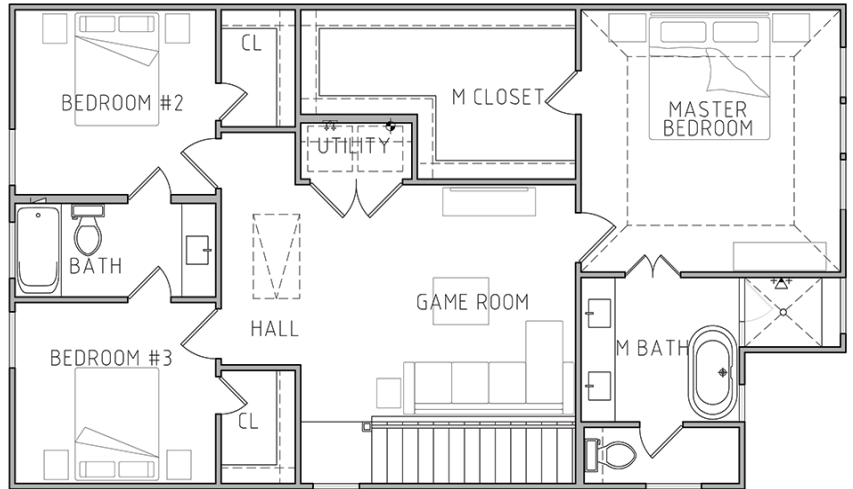
Scale: 1/4"= 1'-0"

BILBAO

1,732 sq. ft.

3 Bed • 2.5 Bath • 2 Car Garage

AREA CALCULATIONS	
FIRST FLOOR:	604 SQ. FT.
SECOND FLOOR:	1,128 SQ. FT.
TOTAL LIVING:	1,732 SQ. FT.
GARAGE	395 SQ. FT.
FRONT PORCH	34 SQ. FT.
TOTAL COVERED AREA	2,161 SQ. FT.



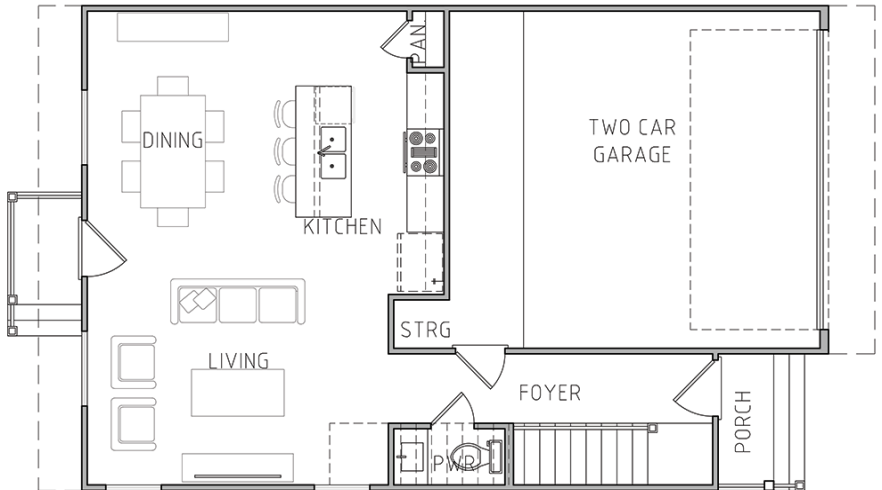
SECOND FLOOR PLAN

Scale: 1/4" = 1'-0"



FRONT ELEVATION

Scale: 1/4" = 1'-0"



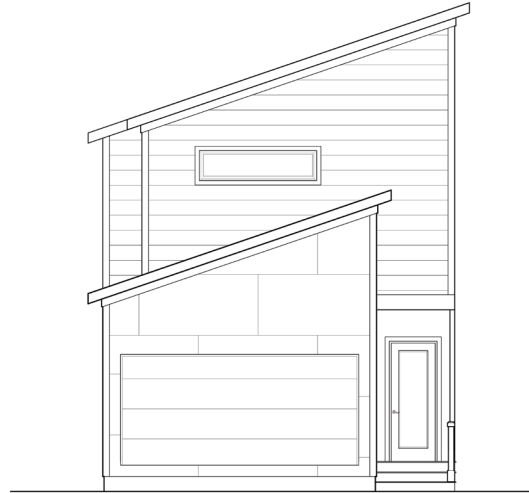
FIRST FLOOR PLAN

Scale: 1/4" = 1'-0"

MALAGA

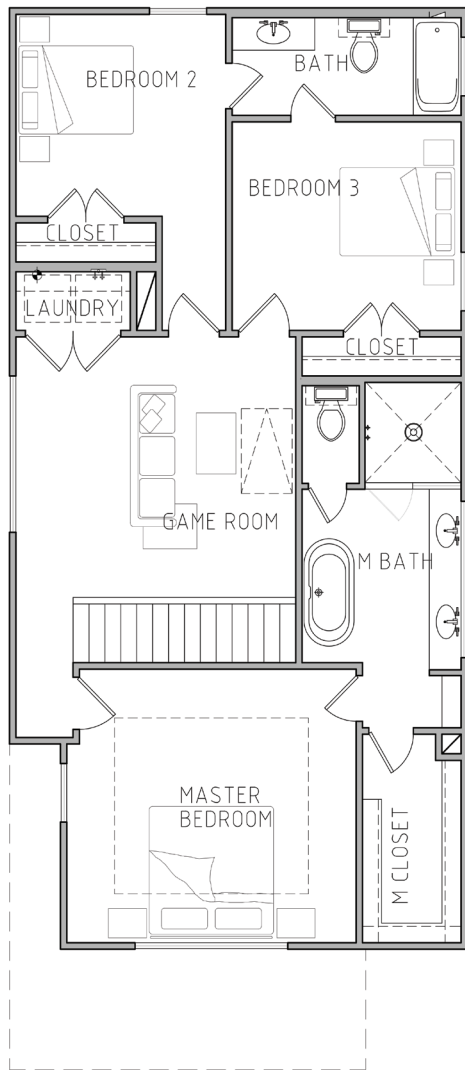
1,935 sq. ft.
3 Bed • 2.5 Bath • 2 Car Garage

AREA CALCULATIONS	
FIRST FLOOR:	807 SQ. FT.
SECOND FLOOR:	1,128 SQ. FT.
TOTAL LIVING:	1,935 SQ. FT.
PORCH 1	37 SQ. FT.
GARAGE	383 SQ. FT.
TOTAL COVERED AREA	2,355 SQ. FT.



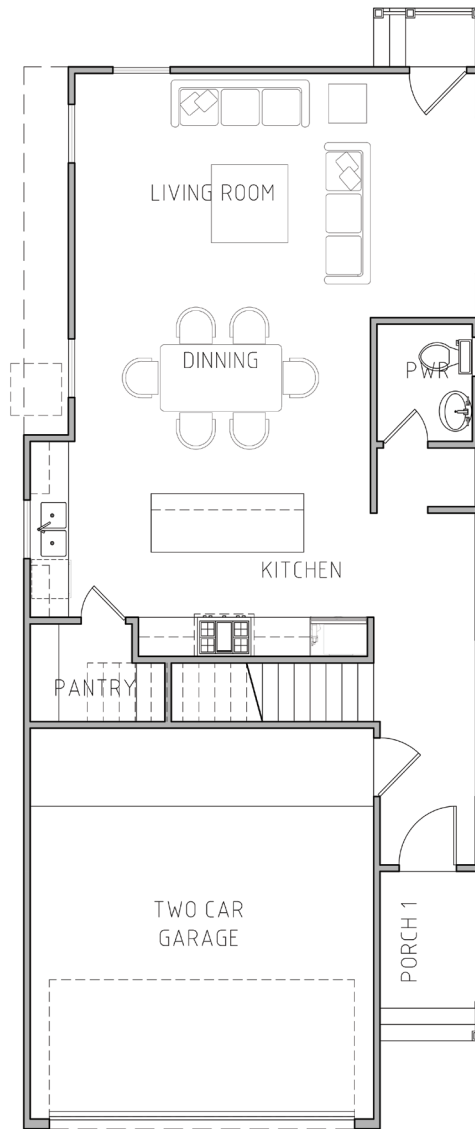
FRONT ELEVATION

Scale: 1/4"= 1'-0"



SECOND FLOOR PLAN

Scale: 1/4"= 1'-0"

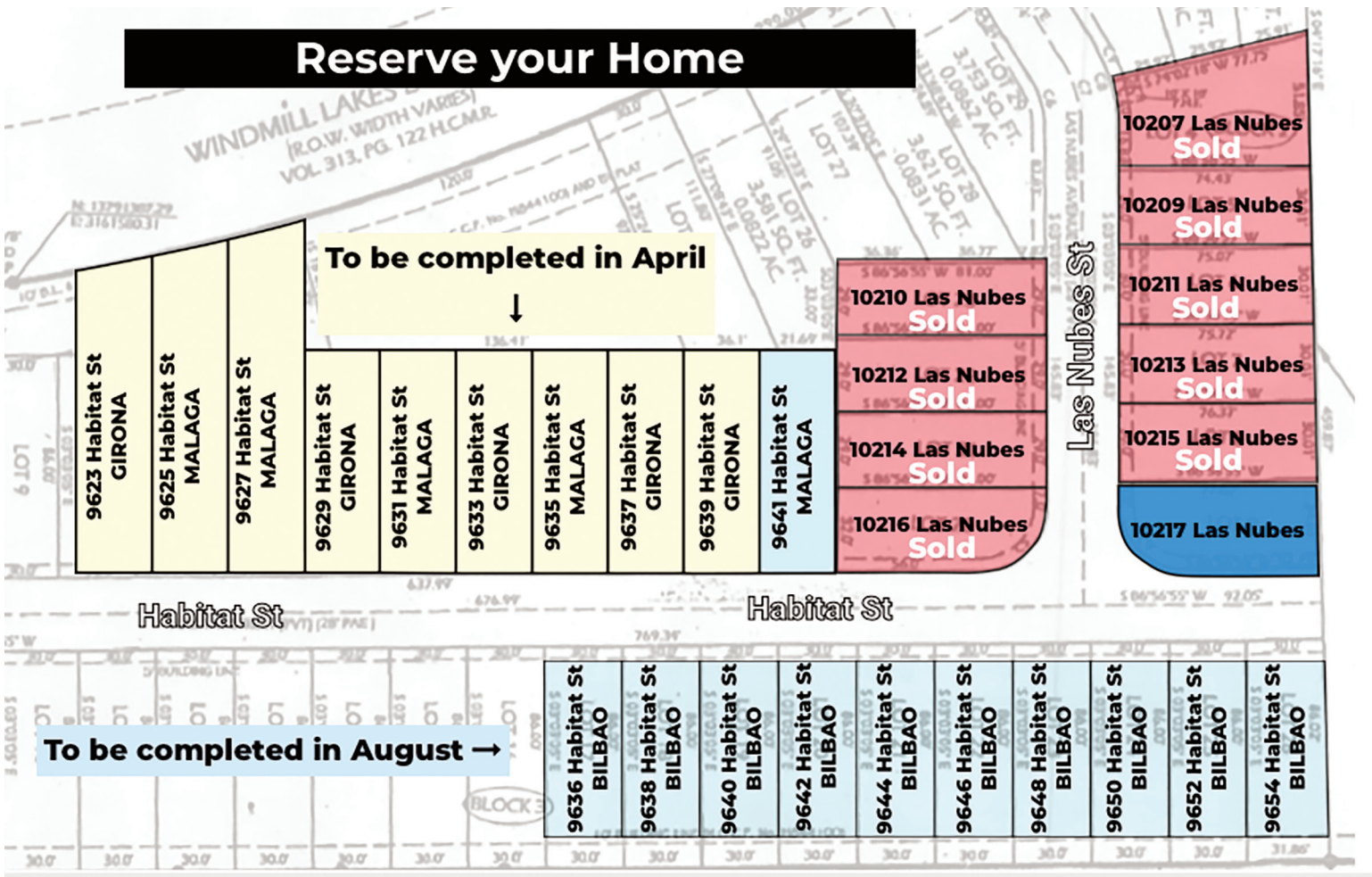


FIRST FLOOR PLAN

Scale: 1/4"= 1'-0"

65 PATIO HOMES

MODERN ARCHITECTURE | OPEN LIVING AREAS | RECREATIONAL PARK



COMMUNITY INFORMATION

SCHOOLS

Atkinson Elementary School
Jessup Elementary School
Laura Bush Elementary School
Morris Middle School
Windmill Lakes Orem High School

HEALTH & PHARMACY

CVS Pharmacy
Fuqua Family Practice and Urgent Care
Kingspoint Healthcare Services
Walgreens Pharmacy

GROCERIES

ALDI
H-E-B
Kroger
La Michoacana Meat Market
Pioneer Food Store

EAT & DRINK

Crawfish House
El Oregano
Halal Shawarma
Island Flavorz
Pho 2 Bowls
Taqueria de Jalisco
The Catch: Gulf Fwy

SHOPPING

Alameda Mall
Fuqua Shopping Center
Gulfway Shopping Center
Southpoint Shopping Center

HOA

\$750 ANNUAL + \$85 MONTHLY
Covers water, recycling, sewer, trash,
cleanliness of community

TAX INFORMATION

Total Estimated tax rate 2.75%

LOAN OFFICER

Mary B Garcia / Kalb Advisors /
832-335-2914



CONTACT US!

CONNECT WITH OUR TEAM OF EXPERIENCED AGENTS TODAY.

STONE & FIELDS

KARILIZ PEREZ
LISTING BROKER

O: 713.489.7585 M: 832.435.0446

info@stoneandfields.com
windmilllakesvillas.com