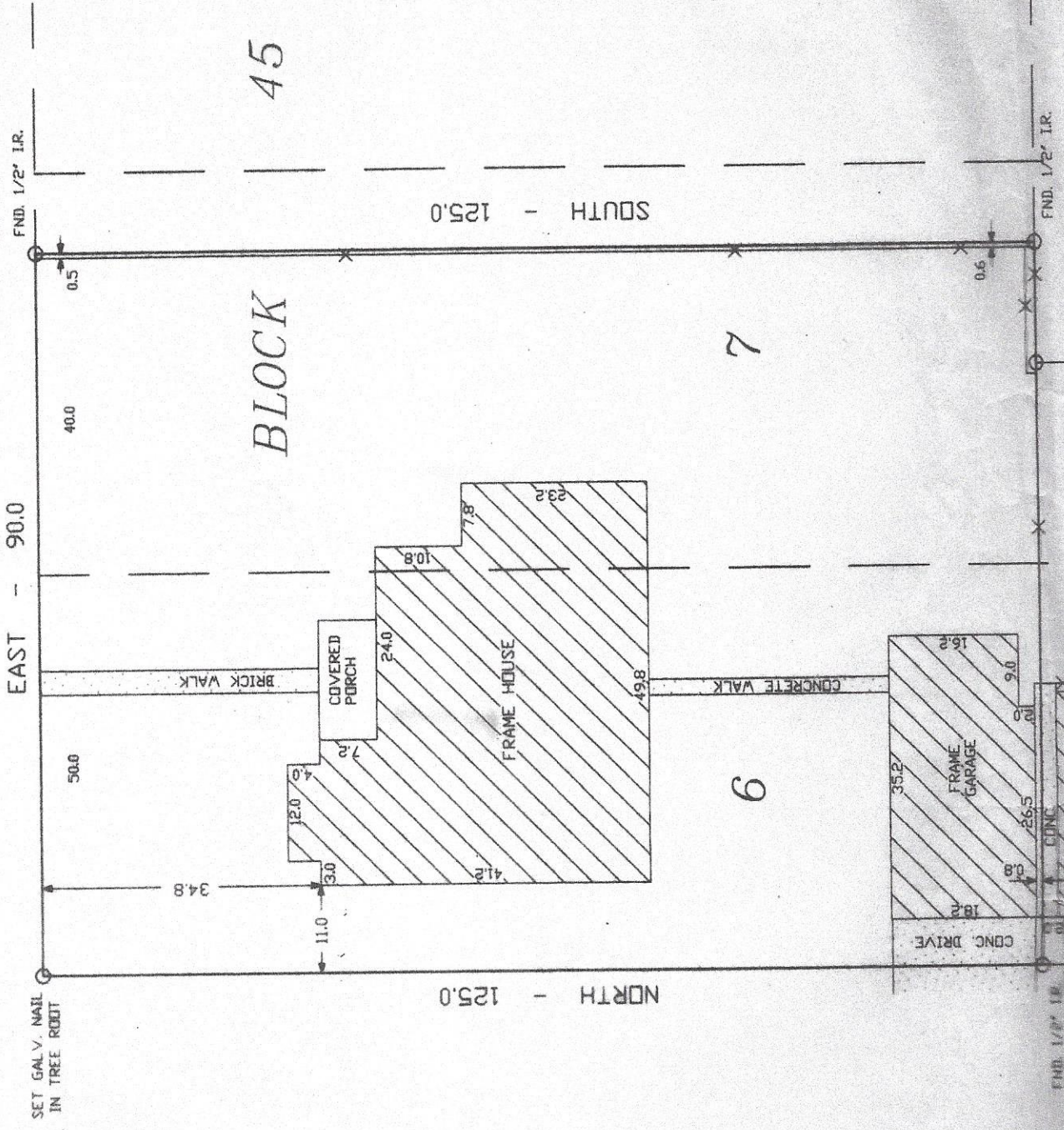


BLUM STREET

60.0' R-O-W

FND. 1' I.P. 1.5 NORTH  
FND. 1/2' I.R.



SET GALV. NAIL  
IN TREE ROOT

125.0 - SOUTH

90.0 - EAST

125.0 - NORTH

60.0' R-O-W

TAYLOR STREET

45

8

7

6

FND. 1/2' I.R.

FND. 1/2' I.R.

BLUM STREET

60.0' R-D-V

FND. 1' IP. 1.5 NORTH  
FND. 1/2' I.R.

EAST - 90.0

40.0

50.0

SET GALV. NAIL  
IN TREE ROOT

34.8

BLOCK

45

SOUTH - 125.0

NORTH - 125.0

60.0' R-D-V

TAYLOR STREET

8

7

6

