

LINE TABLE		
LINE	BEARING	DISTANCE
L1	S 87°57'08" W	72.80'
L2	S 77°34'23" W	487.30'
L3	N 12°25'37" W	30.00'
L4	S 67°33'16" W	474.75'
L5	S 01°53'18" E	767.34'
L6	N 01°58'00" W	42.00'
L7	S 75°14'13" W	110.26'
L8	S 75°14'13" W	110.26'

CURVE TABLE				
CURVE	DELTA	RADIUS	LENGTH	CHORD
C1	90°00'00"	35.00'	54.98'	N 42°57'08" E - 49.50'
C2	90°00'00"	25.00'	39.27'	S 47°02'52" E - 35.36'
C3	35°33'41"	75.00'	46.89'	S 74°08'01" E - 46.22'
C4	14°34'50"	120.00'	30.54'	S 84°45'27" E - 30.46'
C5	65°31'03"	25.00'	28.59'	S 69°46'27" W - 27.06'
C6	39°03'47"	85.00'	57.95'	N 17°29'01" E - 56.84'
C7	110°03'37"	100.00'	192.09'	N 57°04'41" W - 163.89'
C8	39°03'52"	100.00'	68.18'	S 17°28'59" W - 66.87'
C9	83°49'46"	111.39'	162.98'	N 39°51'56" E - 148.83'
C10	4°12'26"	1000.00'	73.43'	S 79°40'36" W - 73.42'
C11	72°53'43"	25.00'	31.81'	S 65°58'45" E - 29.70'
C12	252°53'45"	60.00'	264.83'	S 24°01'14" W - 96.53'
C13	74°05'57"	300.00'	40.23'	N 71°23'45" E - 40.20'
C14	7°38'34"	300.00'	40.23'	S 71°24'56" W - 39.99'
C15	69°49'33"	130.00'	158.43'	S 33°01'29" W - 148.81'
C16	90°00'00"	25.00'	39.27'	N 43°08'42" E - 35.36'
C17	90°04'42"	25.00'	39.30'	S 46°55'39" E - 35.38'
C18	72°08'30"	25.00'	31.48'	N 51°57'45" E - 29.44'
C19	176°14'54"	50.00'	153.81'	N 75°59'03" W - 99.85'
C20	78°52'28"	25.00'	34.85'	S 27°47'49" E - 32.10'
C21	02°31'15"	330.00'	2.23'	N 67°32'26" W - 2.23'
C22	24°51'25"	550.00'	238.61'	N 79°32'18" W - 236.74'
C23	96°18'45"	151.00'	253.83'	S 50°02'40" E - 224.98'
C24	99°39'11"	151.00'	262.63'	S 47°56'18" W - 230.76'
C25	40°14'31"	166.00'	116.59'	S 69°19'17" W - 114.21'
C26	13°08'40"	150.00'	34.41'	S 74°19'08" W - 34.34'
C27	159°42'49"	100.00'	278.75'	S 12°06'36" E - 196.87'
C28	24°19'38"	500.00'	212.30'	N 75°52'11" E - 210.70'
C29	43°13'26"	300.00'	226.32'	S 85°19'04" W - 220.99'
C30	48°55'40"	100.00'	85.40'	N 48°36'23" W - 82.82'
C31	83°59'49"	75.00'	109.95'	N 70°53'30" E - 100.37'
C32	90°00'00"	35.00'	54.98'	N 47°02'52" W - 49.50'

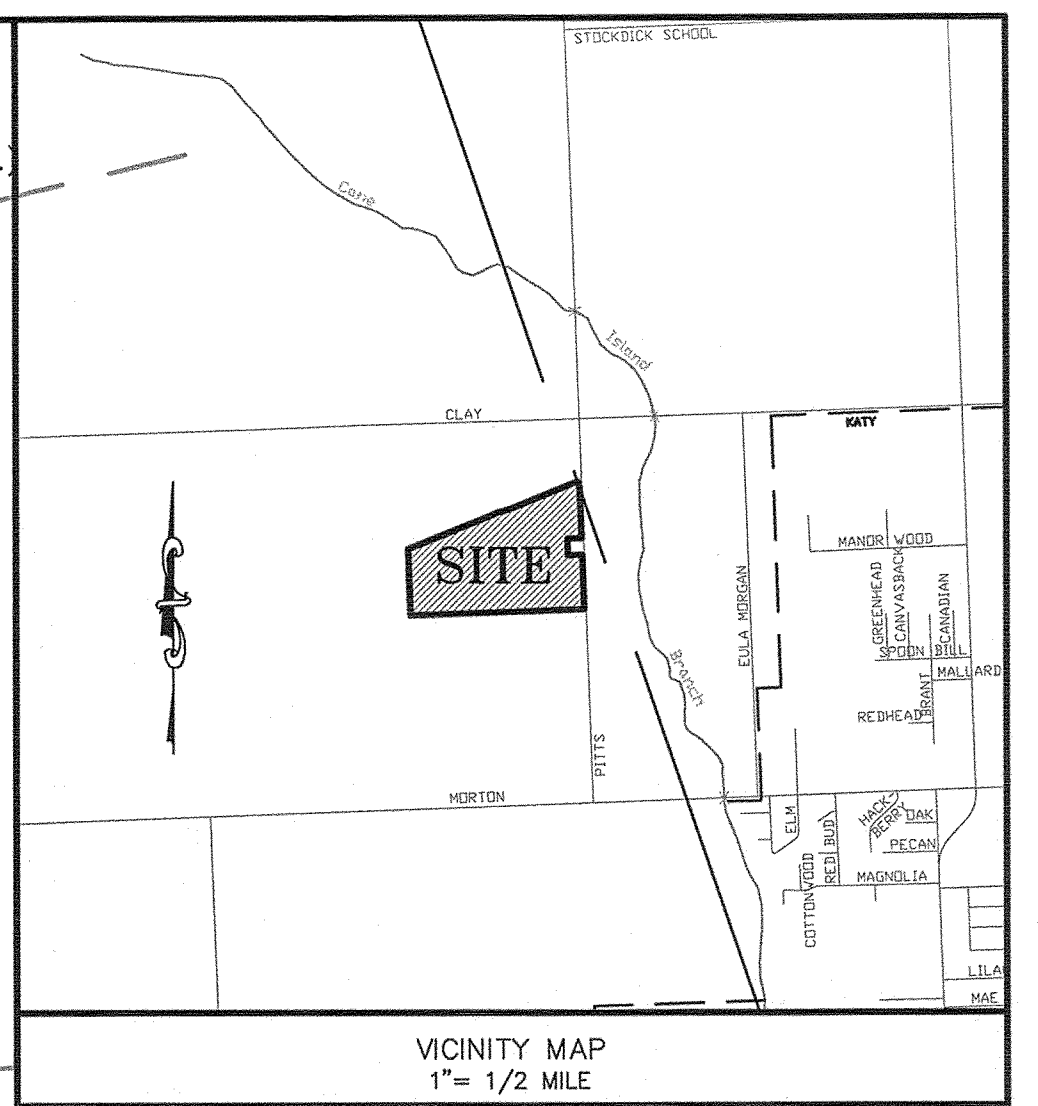
RESTRICTED RESERVE TABLE			
A	RESTRICTED TO RECREATION / DETENTION / DRAINAGE	24.6159 ACRES	(1,072,269 SQ. FT.)
B	RESTRICTED TO UTILITIES LANDSCAPE / OPEN SPACE	1.0852 ACRE	(47,271 SQ. FT.)
C	RESTRICTED TO RECREATION LANDSCAPE / OPEN SPACE	0.5790 ACRE	(25,223 SQ. FT.)
D	RESTRICTED TO LANDSCAPE / OPEN SPACE / DRAINAGE	0.5508 ACRE	(23,993 SQ. FT.)

ACREAGE
 B4 DIVERSIFIED HOLDINGS, LLC
 (W.C.C.F. NO. 2013006328)
 (W.C.C.F. NO. 2013006329)
 (W.C.C.F. NO. 2013006330)
 (W.C.C.F. NO. 2013006333)
 (W.C.C.F. NO. 2013007322)
 (W.C.C.F. NO. 2013007439)

$\Delta=14°52'37"$
 $R=300.00'$
 $L=77.90'$
 $CH=N 74°59'34" E - 77.68'$

$\Delta=14°50'14"$
 $R=300.00'$
 $L=77.69'$
 $CH=S 75°00'46" W - 77.47'$

H. & T. C. R. R. CO. SURVEY
 SECTION 127
 ABSTRACT NO. 205



ACREAGE
 JAMES T. SHIELDS, AND WIFE
 JUDY B. SHIELDS
 1.0 ACRE
 (VOL. 622, PG. 100; W.C.D.R.)
 (H.C.C.F. NO. N466197)

LAKE LIVING BOULEVARD (PVT.)
 (60' P.A.E. AND P.U.E.)
ACREAGE
 JOHN E. COLVIN AND WIFE
 JUDY E. COLVIN
 1.0 ACRE
 (H.C.C.F. NO. N466316)

ACREAGE
 MICHAEL MCROY AND
 EVA MCROY, HUSBAND AND WIFE
 1.4562 ACRES
 (VOL. 1356, PG. 294; W.C.D.R.)

ACREAGE
 OLIVER S. ELLERBE III AND
 MELISSA ELLERBE, HUSBAND AND WIFE
 (VOL. 1345, PG. 785; W.C.D.R.)

ACREAGE
 ROY GURROLA, ET. UX.
 (VOL. 690, PG. 209; W.C.D.R.)

ACREAGE
 LORENZO SAUCEDO GOMEZ
 3.696 ACRES
 (VOL. 878, PG. 716; W.C.D.R.)

FINAL PLAT OF
AUGUST LAKES
SEC 1

A SUBDIVISION OF A 72.5136 ACRES
 IN THE H. & T. C. R. R. CO. SURVEY,
 SECTION 127, ABSTRACT NO. 205
 WALLER COUNTY, TEXAS

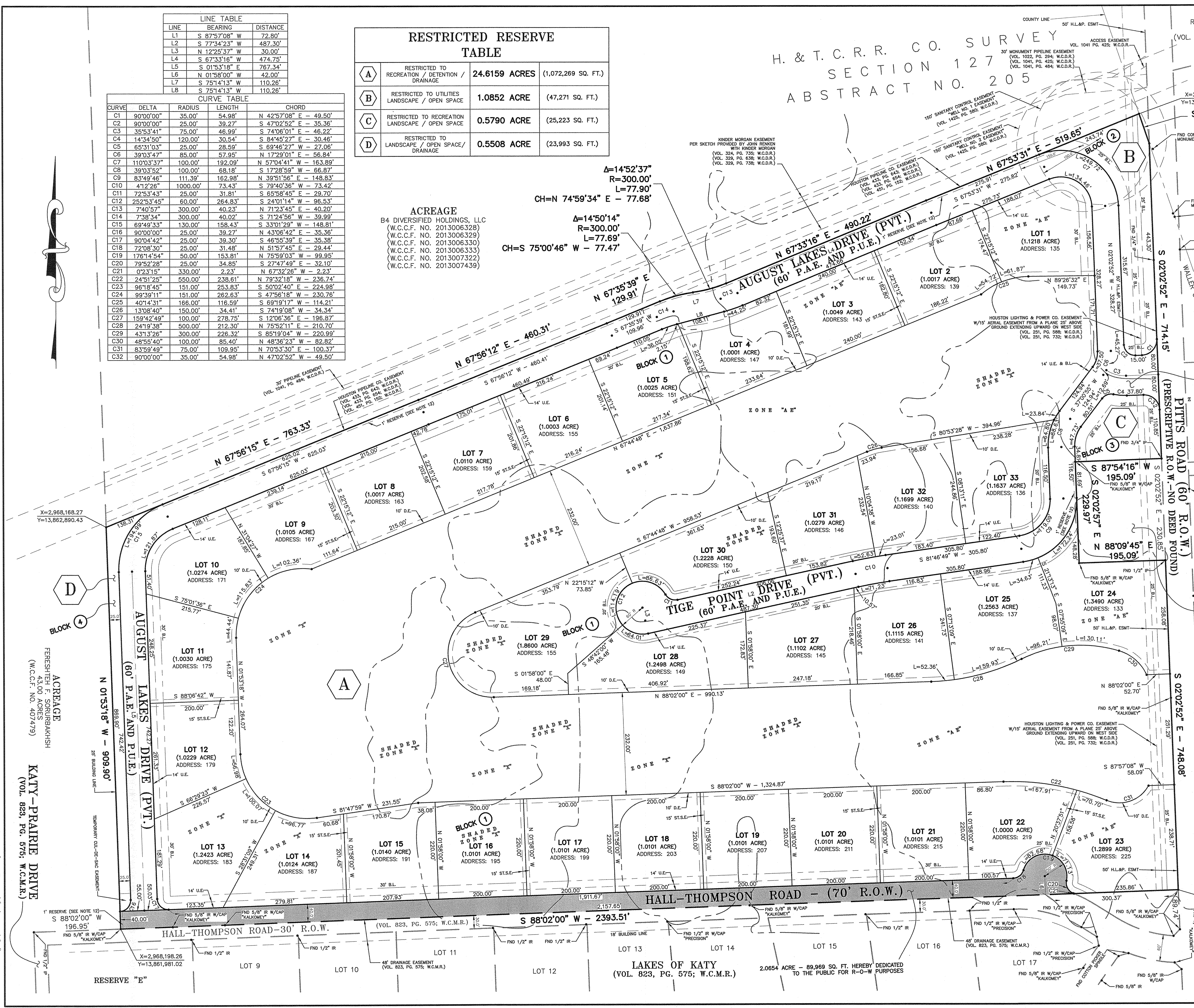
ACREAGE
 ASHLEY JOSEY AND
 JUSTIN BECKENDORFF
 0.499 ACRES
 (VOL. 1137, PG. 15; W.C.D.R.)

ACREAGE
 ASHLEY JOSEY AND
 JUSTIN BECKENDORFF
 1.0 ACRE
 (VOL. 1137, PG. 15; W.C.D.R.)

ACREAGE
 ASHLEY JOSEY AND
 JUSTIN BECKENDORFF
 0.831 ACRE
 (VOL. 1137, PG. 15; W.C.D.R.)

33 LOTS - 4 RESERVES - 4 BLOCKS
 ~ OWNER ~
B4 DIVERSIFIED HOLDINGS, LLC
 3310 Lakes of Katy Lane
 Katy, Texas 77493
 (281) 850-3067

~ SURVEYOR ~
TEXAS ENGINEERING AND MAPPING
 12810 Century Drive
 Stafford Texas 77477
 (281) 491-2525
 Brian Nesvada, R.P.L.S.
 JOB NO. 1089-1



ACREAGE
 FERESHITH F. SORUBAKHSH
 43.00 ACRES
 (W.C.C.F. NO. 407479)

KATY-PRAIRIE DRIVE
 (VOL. 823, PG. 576; W.C.M.R.)

DRAWING INFO: Z:\089\1089-1\089-1.dwg DEC 08, 2014 4:25 PM