

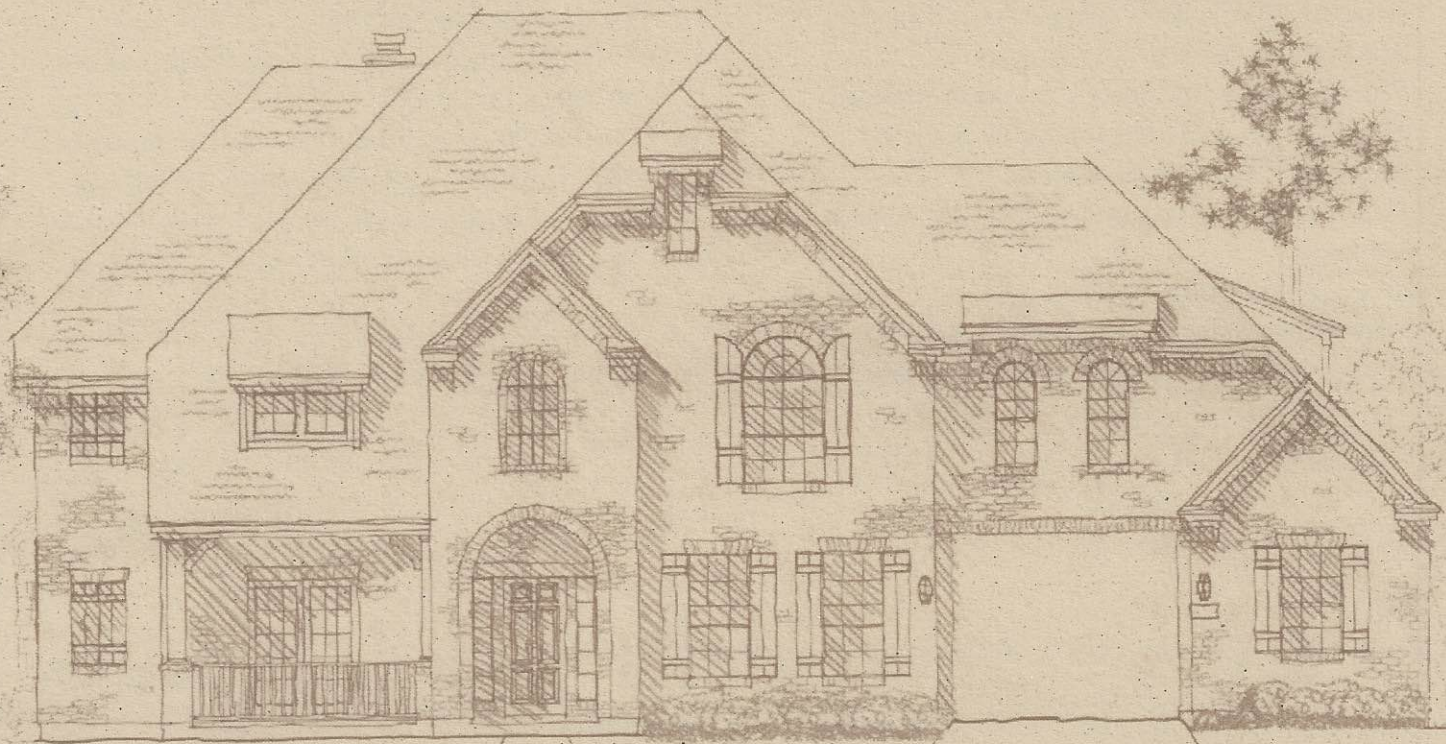
COVENTRY HOMES

FEATURES

available in

Magnolia Creek

The Grove & The Traditions



LIFE LIVED TO THE FULLEST.
YOUR **DREAMS** ATTAINED.

IDEAL KITCHENS

- GE® appliance package for the gourmet chef in the family includes a gas cooktop (per plan), self-clean built-in oven, built-in microwave and dishwasher
- Vent hood with multiple speeds vented outside the home
- Custom quality oak accented cabinetry maximizes use of space with adjustable shelves on 42" upper cabinets
- Elegant crown moulding on kitchen cabinetry
- Convenient under-cabinet 110 volt outlet
- Granite or engineered stone material countertop offers durability and unique characteristics of a natural stone
- Durable 8" deep undermount sink with garbage disposal allows for easy clean-up
- Moen OneTouch® faucet
- Choice of a drinking water system: Reverse Osmosis, a convenient, cost effective way to improve the taste, odor & clarity of the water or a 2-stage system which removes chlorine & sediments down to 5 microns, improving the quality
- Attractive ceramic tile backsplash set on diagonal adds beauty to function
- Beautiful ceramic tile flooring in kitchen, breakfast area and utility room offers durability and low maintenance for quick clean-ups
- A convenient spice rack in the pantry adds function and storage
- Recessed can lighting
- Convenient laundry area with cabinet, shelf and rod
- Choice of accent wall paint for that custom touch

DRAMATIC INTERIORS

- Award-winning designs with extensive use of raised ceilings, arches, niches, columns and plant shelves complement the flexibility of our homes
- Dramatic entries with your choice of ceramic tile
- Choice of interior paint colors add your own personal touch
- Elegant stairways with oversized stained handrail, painted balusters and waterfall treads (per plan)
- Opera balconies, columns and art niches add elegance to every day living (per plan)
- Elegant two-step crown moulding in selected areas lends a classic look to the interior
- Picture frame moulding and chair rail in the formal dining room lends an air of elegance
- Oversized baseboards throughout first floor
- Rounded sheetrock corners throughout the home (with the exception of the windows) softens the look of the interior
- Fluted and crowned custom wood casing on front entry door (per plan)
- Raised panel interior doors
- Nickel finish door hardware
- Attractive fireplace with decorative mantel and gas log lighter (per plan)
- Choice of brick or ceramic tile fireplace surround
- Choice of plush carpet with a quality 1/2 inch pad
- Choice of designer accent paint in kitchen, breakfast area, master bath and powder room

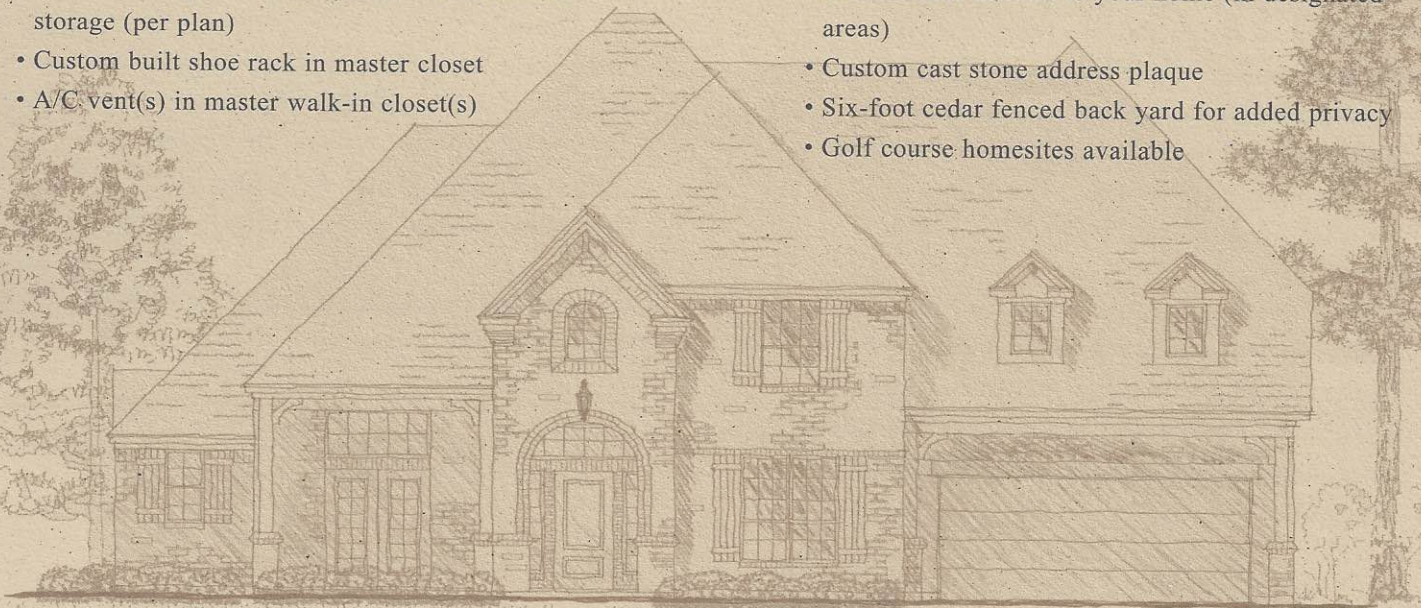
Our extensive selection of Coventry Home floor plans are just the starting point with the flexibility to customize your home to meet your special needs.

SUITE DREAMS

- Moen® chrome plumbing fixtures in all baths for a timeless look
- Cultured marble garden tub with soothing hydro jets in master bath for ultimate relaxation
- Separate glass-enclosed shower with tile surrounds (some plans)
- Cultured marble seat (some shower enclosures)
- Elongated commode in all baths
- Magazine rack in master water closet
- Cultured marble vanity tops with integral sinks in master and secondary baths
- His & Hers Hi-Lo vanities in master bath (per plan)
- 12 x 12 ceramic tile surrounds in master bath
- Ceramic tile flooring in the master bath
- Cultured marble pedestal sink in powder room creates a classic look (per plan)
- Hardibacker® ceramic tile backing for added strength, durability and moisture protection (designated areas)
- Walk-in closets (in designated areas)
- Raised ceilings in master closets with seasonal storage (per plan)
- Custom built shoe rack in master closet
- A/C vent(s) in master walk-in closet(s)

CLASSIC EXTERIORS

- Choice of award winning exterior elevations including optional front porches
- Brick paved front porches (per plan)
- Elegant stained mahogany front door with leaded glass inserts
- Front coach light with photo cell for convenience
- Professionally designed landscape package enhances curb appeal
- Fully sodded front yard
- Three larger caliper trees planted in front yard
- Amazing James Hardie® masonry siding, soffit and fascia. Termite and flame resistant.
- Superior 30 year architectural grade shingles
- Seamless aluminum gutters in front (in designated areas)
- Decorative fireplace shrouds
- Picture framed entry walk, public walk, driveway and patio
- Prewired for garage door openers
- White framed, divided light windows for added architectural interest to your home (in designated areas)
- Custom cast stone address plaque
- Six-foot cedar fenced back yard for added privacy
- Golf course homesites available



EXACTLY AS YOU'VE
ALWAYS DREAMED IT WOULD BE.

COMFORT & ENERGY FEATURES

EXTRA TOUCHES

- Homes built to meet stringent Energy Star® requirements
- Homes built according to the requirements of the GHBA Green Building Initiative to improve energy efficiency and protect the environment
- Vinyl framed, double-pane windows with low-e, impact resistant glass for energy efficiency and windborne debris protection
- Filtered, fresh air intake ventilator system provides fresh air into the home refreshing old, stale air
- High performance media air filter cleans air more efficiently than standard fiber filters
- R-13 insulation in exterior air conditioned walls
- R-30 insulation in air conditioned flat ceilings
- R-22 insulation in non-flat ceiling areas
- Energy saving gas heating system with electronic ignitor (no pilot)
- 14 seer high efficiency air conditioner(s)
- Programmable comfort center thermostat maximizes home comfort year round
- High efficiency energy saving gas water heater(s)
- FlowGuard Gold® plumbing system maintains water quality, is more energy efficient and results in reduced maintenance and greater reliability
- Continuous soffit vents with ridge vent and/or air hawk(s) ventilation system
- Standard connections for both gas and electric clothes dryer
- Superior quality reversible ceiling fan with light kit in family room, master bedroom and game room
- Flexible designs allowing you to customize your home to fit your lifestyle - limited only by building codes, deed restrictions, your budget and your imagination

- National Warranty Program
- Personal interview with a Professional Decorator Consultant at the Design Center
- Fully installed alarm system with optional monitoring for peace of mind
- Protect your home against pests with a pest control system that applies materials directly into the walls and minimizes exposure to your family, pets and interior surfaces
- Engineered, certified and individually inspected foundations
- Engineered flooring system drastically reduces floor noise caused by joist shrinkage, building a strong, solid and secure floor
- Plywood tongue & groove subfloor on two story plans: nailed, glued and screwed
- Home office connection (two phone lines and one coaxial) in data area/study simplifies home networking abilities
- State-of-the-art CAT5 advanced wiring for communications and home entertainment on all phone lines
- Prewired for cable TV in family room, all bedrooms, and game room (if applicable)
- Prewired for phone in kitchen, family room, game room, study, all bedrooms and garage (per plan)
- Two holiday lighting outlets at soffit with separate switch
- All bedrooms blocked and wired for ceiling fans
- Fluorescent light in garage

Let us build your dream home —
a Coventry Home.

Coventry Homes will be continually providing you with the best possible home designs and features. In doing so, Coventry Homes reserves the right to make additions, deletions and/or modify the available features without notice. Features displayed in our models may or may not be included as standard features.

09/07 HVA

