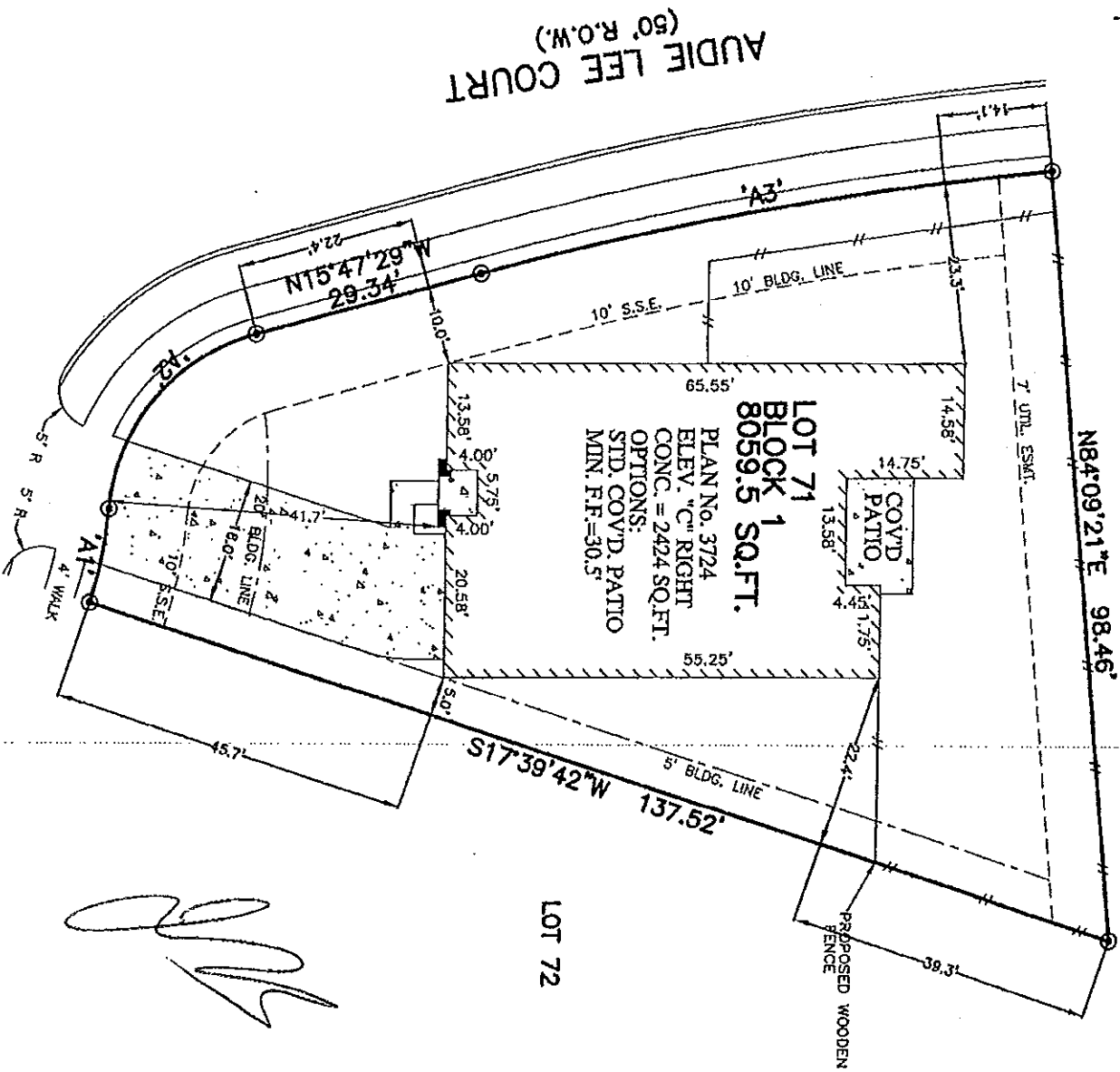




ARC TABLE			
ARC	LEN.	RAD.	CHRD. BRG.
A1'	12.20'	50.00'	S79°20'11"E
A2'	30.77'	25.00'	S51°04'00"E
A3'	73.78'	425.00'	S10°49'03"E



[Handwritten signature]

**15922 AUDIE LEE COURT
(CUL-DE-SAC)
28' CONCRETE PAVEMENT**

PRELIMINARY ONLY

PLOT PLAN

SCALE: 1 = 20'

APPROX. LOT COVERAGE:	39.38%
FENCE (LIN. FT.)	206 LF.
HOUSE AREA	2424 SQ. FT.
FRONT SOD:	114 SQ. YD.
BACK SOD:	261 SQ. YD.
LEFT SOD:	81 SQ. YD.
RIGHT SOD:	89 SQ. YD.
R.O.W. SOD:	106 SQ. YD.
TOTAL SOD:	651 SQ. YD.
A/C PAD	16 SQ. FT.
PRIVATE WALK	28 SQ. FT.
PUBLIC WALK	539 SQ. FT.
DRIVEWAY	706 SQ. FT.
IN-TURN	181 SQ. FT.
TOTAL PAVING:	1470 SQ. FT.

- NOTES:
1. ALL BEARINGS SHOWN HEREON ARE BASED ON THE RECORDED PLAT.
 2. THIS PLOT PLAN WAS PREPARED WITHOUT BENEFIT OF A TITLE REPORT. THERE MAY BE EASEMENTS, BUILDING LINES & OTHER MATTERS OF RECORD NOT SHOWN HEREON. SURVEYOR OR ALPOINTS SERVICES CORP. IS NOT LIABLE FOR ANY DAMAGES THAT MAY INCUR IN ANY EVENT THE BUILDER BUILDS ANY IMPROVEMENTS CLOSER THAN 5.0' OR WITHIN AN EASEMENT.

© 2016, ALPOINTS SERVICES CORP., ALL RIGHTS RESERVED

FOR: LENNAR HOMES
ADDRESS:
15922 AUDIE LEE COURT
ALPOINTS JOB #: LH93861 OU
JOB#



ALPOINTS SERVICES CORP.
PHONE: 713-468-7707
T.E.P.L.S. NO. 10122500

LOT 71, BLOCK 1,
SEVEN OAKS SOUTH, PARTIAL REPLAT NO. 1,
FILM CODE No. 668228, MAP RECORDS,
HARRIS COUNTY, TEXAS

ISSUE DATE: 2/29/2016



ALPOINTS SERVICES CORP. COMMERCIAL/BUILDER DIVISION 1515 WITTE ROAD HOUSTON, TEXAS 77080