



# FEMA Flood Map Service Center: Search By Address

Navigation

Search

Languages

MSC Home (/portal/)

MSC Search by Address (/portal/search)

MSC Search All Products (/portal/advanceSearch)

MSC Products and Tools (/portal/resources/productsandtools)

Hazus (/portal/resources/hazus)

LOMC Batch Files (/portal/resources/lomc)

Product Availability (/portal/productAvailability)

MSC Frequently Asked Questions (FAQs) (/portal/resources/faq)

MSC Email Subscriptions (/portal/subscriptionHome)

Contact MSC Help (/portal/resources/contact)

Enter an address, place, or coordinates: ?

851 Hlidden Oaks Dr Pointblank TX

Search

Whether you are in a high risk zone or not, you may need flood insurance... Learn more about steps you can take to reduce flood risk damage.

## Search Results—Products for SAN JACINTO COUNTY UNINCORPORATED AREAS

Show ALL Products » (https://msc.fema.gov/portal/availabilitySearch?addcommunity=480553&communityName=SAN J)

The flood map for the selected area is number 48407C0100C, effective on 11/04/2010 ?

### DYNAMIC MAP



### MAP IMAGE



(https://msc.fema.gov/portal/downloadProduct?

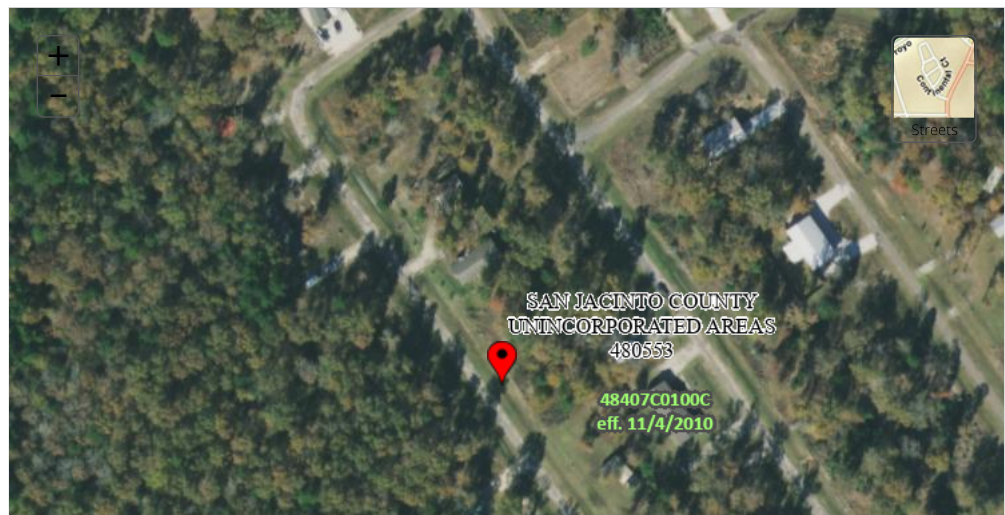
productTypeID=FINAL\_PRODUCT&productSubTypeID=FIRM\_PANEL&productID=48407C0100C)

### Changes to this FIRM ?

- Revisions (0)
Amendments (17)
Revalidations (1)

You can choose a new flood map or move the location pin by selecting a different location on the locator map below or by entering a new location in the search field above.

Go To NFHL Viewer » (https://hazards-fema.maps.arcgis.com/apps/webappviewer/index.html?id=8b0adb51996444d)





**PIN** Approximate location based on user input and does not represent an authoritative property location

**MAP PANELS**

- Selected FloodMap Boundary
- Digital Data Available
- No Digital Data Available
- Unmapped

**OTHER AREAS**

- Area of Minimal Flood Hazard Zone X
- Effective LOMRs
- Area of Undetermined Flood Hazard Zone D
- Otherwise Protected Area
- Coastal Barrier Resource System Area

**SPECIAL FLOOD HAZARD AREAS**

- Without Base Flood Elevation (BFE) Zone A, V, A99
- With BFE or Depth
- Regulatory Floodway Zone AE, AO, AH, VE, AR

**OTHER AREAS OF FLOOD HAZARD**

- 0.2% Annual Chance Flood Hazard, Areas of 1% annual chance flood with average depth less than one foot or with drainage areas of less than one square mile Zone X
- Future Conditions 1% Annual Chance Flood Hazard Zone X
- Area with Reduced Flood Risk due to Levee. See Notes. Zone X
- Area with Flood Risk due to Levee Zone D

**OTHER FEATURES**

- Cross Sections with 1% Annual Chance Water Surface Elevation
- Coastal Transect
- Base Flood Elevation Line (BFE)
- Limit of Study
- Jurisdiction Boundary
- Coastal Transect Baseline
- Profile Baseline
- Hydrographic Feature

**GENERAL STRUCTURES**

- Channel, Culvert, or Storm Sewer
- Levee, Dike, or Floodwall

Share This Page.

[Home](http://www.fema.gov/) (<http://www.fema.gov/>) [Download Plug-ins](http://www.fema.gov/download-plug-ins) (<http://www.fema.gov/download-plug-ins>) [About Us](http://www.fema.gov/about-agency) (<http://www.fema.gov/about-agency>) [Privacy Policy](http://www.fema.gov/privacy-policy) (<http://www.fema.gov/privacy-policy>) [FOIA](http://www.fema.gov/foia) (<http://www.fema.gov/foia>) [Office of the Inspector General](http://www.oig.dhs.gov/) (<http://www.oig.dhs.gov/>) [Strategic Plan](http://www.fema.gov/fema-strategic-plan) (<http://www.fema.gov/fema-strategic-plan>) [Whitehouse.gov](http://www.whitehouse.gov/) (<http://www.whitehouse.gov/>) [DHS.gov](http://www.dhs.gov/) (<http://www.dhs.gov/>) [Ready.gov](http://www.ready.gov/) (<http://www.ready.gov/>) [USA.gov](http://www.usa.gov/) (<http://www.usa.gov/>) [DisasterAssistance.gov](http://www.disasterassistance.gov/) (<http://www.disasterassistance.gov/>)

**OIG HOTLINE**  
Report Fraud, Waste & Abuse (<https://www.oig.dhs.gov/hotline>)

Official website of the Department of Homeland Security