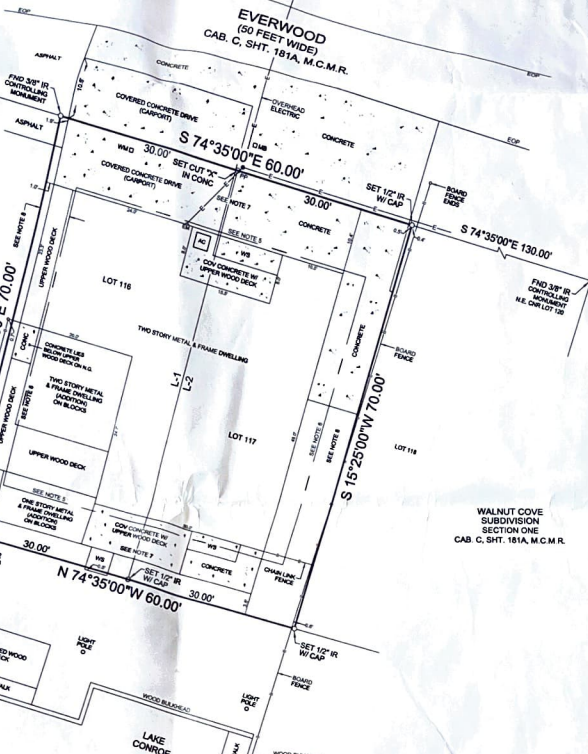




WILLIAM WIER SURVEY, ABSTRACT NO. 42

Course	Bearing	Distance
L 1	N 15°26'00" W	70.00'
L 2	N 15°26'00" W	70.00'

**LEGEND:**  
 M.C.M.R. MONTGOMERY COUNTY MAP RECORDS  
 M.C.D.R. MONTGOMERY COUNTY DEED RECORDS  
 M.C.P. MONTGOMERY COUNTY CIVIL FILE  
 U.S. SURVEY  
 VOL. 502 LINE 1  
 VOL. 502 LINE 2  
 VOL. 502 LINE 3  
 VOL. 502 LINE 4  
 VOL. 502 LINE 5  
 VOL. 502 LINE 6  
 VOL. 502 LINE 7  
 VOL. 502 LINE 8  
 VOL. 502 LINE 9  
 VOL. 502 LINE 10  
 VOL. 502 LINE 11  
 VOL. 502 LINE 12  
 VOL. 502 LINE 13  
 VOL. 502 LINE 14  
 VOL. 502 LINE 15  
 VOL. 502 LINE 16  
 VOL. 502 LINE 17  
 VOL. 502 LINE 18  
 VOL. 502 LINE 19  
 VOL. 502 LINE 20  
 VOL. 502 LINE 21  
 VOL. 502 LINE 22  
 VOL. 502 LINE 23  
 VOL. 502 LINE 24  
 VOL. 502 LINE 25  
 VOL. 502 LINE 26  
 VOL. 502 LINE 27  
 VOL. 502 LINE 28  
 VOL. 502 LINE 29  
 VOL. 502 LINE 30  
 VOL. 502 LINE 31  
 VOL. 502 LINE 32  
 VOL. 502 LINE 33  
 VOL. 502 LINE 34  
 VOL. 502 LINE 35  
 VOL. 502 LINE 36  
 VOL. 502 LINE 37  
 VOL. 502 LINE 38  
 VOL. 502 LINE 39  
 VOL. 502 LINE 40  
 VOL. 502 LINE 41  
 VOL. 502 LINE 42  
 VOL. 502 LINE 43  
 VOL. 502 LINE 44  
 VOL. 502 LINE 45  
 VOL. 502 LINE 46  
 VOL. 502 LINE 47  
 VOL. 502 LINE 48  
 VOL. 502 LINE 49  
 VOL. 502 LINE 50  
 VOL. 502 LINE 51  
 VOL. 502 LINE 52  
 VOL. 502 LINE 53  
 VOL. 502 LINE 54  
 VOL. 502 LINE 55  
 VOL. 502 LINE 56  
 VOL. 502 LINE 57  
 VOL. 502 LINE 58  
 VOL. 502 LINE 59  
 VOL. 502 LINE 60  
 VOL. 502 LINE 61  
 VOL. 502 LINE 62  
 VOL. 502 LINE 63  
 VOL. 502 LINE 64  
 VOL. 502 LINE 65  
 VOL. 502 LINE 66  
 VOL. 502 LINE 67  
 VOL. 502 LINE 68  
 VOL. 502 LINE 69  
 VOL. 502 LINE 70  
 VOL. 502 LINE 71  
 VOL. 502 LINE 72  
 VOL. 502 LINE 73  
 VOL. 502 LINE 74  
 VOL. 502 LINE 75  
 VOL. 502 LINE 76  
 VOL. 502 LINE 77  
 VOL. 502 LINE 78  
 VOL. 502 LINE 79  
 VOL. 502 LINE 80  
 VOL. 502 LINE 81  
 VOL. 502 LINE 82  
 VOL. 502 LINE 83  
 VOL. 502 LINE 84  
 VOL. 502 LINE 85  
 VOL. 502 LINE 86  
 VOL. 502 LINE 87  
 VOL. 502 LINE 88  
 VOL. 502 LINE 89  
 VOL. 502 LINE 90  
 VOL. 502 LINE 91  
 VOL. 502 LINE 92  
 VOL. 502 LINE 93  
 VOL. 502 LINE 94  
 VOL. 502 LINE 95  
 VOL. 502 LINE 96  
 VOL. 502 LINE 97  
 VOL. 502 LINE 98  
 VOL. 502 LINE 99  
 VOL. 502 LINE 100



- NOTES**
- 1) BEARINGS ARE REFERENCED TO THE RECORD BEARING (S 74°35'00" E) ALONG THE NORTHEAST LINE OF BLOCK 13 PER THE RECORDED PLAT OF WALNUT COVE SUBDIVISION, SECTION ONE, RECORDED IN CAB. C. S.H.T. 181A, M.C.M.R.
  - 2) THIS SURVEY WAS PERFORMED WITH THE BENEFIT OF A TITLE COMMITMENT PREPARED BY OLD REPUBLIC TITLE COMPANY DATED MAY 25, 2007 (O.P. NO. 070086) AS TO LOT 118.
  - 3) SURVEYOR DID NOT PERFORM A COMPLETE ABSTRACT OF TITLE.
  - 4) SUBJECT TO AN UNRESTRICTED AIRLIFT EASEMENT 15 FEET WIDE FROM A PLANE 35 FEET ABOVE THE GROUND UPWARD LOCATED ADJACENT TO ALL EASEMENTS SHOWN HEREON AS RECORDED IN CAB. C. S.H.T. 181A, M.C.M.R.
  - 5) SUBJECT TO A 10 FOOT WIDE UTILITY AND DRAINAGE EASEMENT AS RECORDED UNDER M.C.P.F. NO. 808087.
  - 6) SUBJECT TO A 10 FOOT BUILDING LINE AS RECORDED UNDER M.C.C.F. NO. 808087.
  - 7) SUBJECT TO A 10 FOOT WIDE UTILITY AND DRAINAGE EASEMENT AS RECORDED UNDER M.C.P.F. NO. 808087.
  - 8) SUBJECT TO A 5 FOOT WIDE UTILITY AND DRAINAGE EASEMENT AS RECORDED UNDER M.C.P.F. NO. 808087.
  - 9) SUBJECT TO AN EASEMENT OVER ALL STREETS FOR THE PURPOSE OF INSTALLING, USING, OPERATING AND MAINTAINING PUBLIC UTILITIES, WATER, SANITARY AND STORM LINES, POWER LINES, ELECTRIC LIGHTING AND TELEPHONE POLES, PIPELINES AND DRAINAGE DITCHES ON STRUCTURES UNRESTRICTED AIRLIFT EASEMENT 15 FEET WIDE ON EITHER SIDE OF SAID EASEMENTS AS RESERVED HEREBY AND ALL EASEMENTS SHOWN ON THE RECORDED PLAT FROM A PLANE 15 FEET ABOVE THE GROUND AND UPWARDS AS RECORDED UNDER M.C.C.F. NO. 808086.
  - 10) SUBJECT TO TERMS, CONDITIONS AND PROVISIONS OF THAT CERTAIN FLOODAGE EASEMENT GRANTED TO SAN ANTONIO WIER AUTHORITY AS RECORDED IN VOL. 822, PG. 306, M.C.D.R.
  - 11) SUBJECT TO TERMS, CONDITIONS AND PROVISIONS TO TRACTS 1 AND 2 GRANTED TO SAN ANTONIO WIER AUTHORITY AS RECORDED IN VOL. 581, PG. 591, M.C.D.R.

I, DEAN E. DAFFRON, HEREBY CERTIFY THAT THIS SURVEY WAS PERFORMED ON THE GROUND UNDER MY SUPERVISION AND THAT THERE ARE NO OTHER ENCROACHMENTS EXCEPT AS SHOWN. THIS SURVEY SUBSTANTIALLY CONFORMS TO THE CURRENT STANDARDS AND SPECIFICATIONS FOR A TEXAS SOCIETY OF PROFESSIONAL SURVEYORS CATEGORY 1A, CONDITION 2 SURVEY.



DEAN E. DAFFRON, P.L.S. 5684

**LAND TITLE SURVEY**

PLAT SHOWING SURVEY OF LOTS 116 AND 117, BLOCK 13, WALNUT COVE SUBDIVISION, SECTION ONE, RECORDED IN CABINET C, SHEET 181A, MONTGOMERY COUNTY MAP RECORDS, LOCATED IN THE WILLIAM WIER SURVEY, ABSTRACT NO. 42, MONTGOMERY COUNTY, TEXAS.

**LAND SURVEYING CO.**  
 16582 EASTCHASE  
 MONTGOMERY, TEXAS 77318  
 PHONE 936-588-0550  
 FAX 936-588-6874

DATE: JUNE 22, 2007  
 SCALE: 1" = 10'  
 DWG. NO.: 070083  
 JOB NO.: 070083

GERALD KILLIAN  
 ADDRESS: 9293 EVERWOOD  
 WILLIS, TEXAS 77318