

THE STATE OF TEXAS
 COUNTY OF HARRIS
 I, W.D. MILLER, Clerk of the County Court of Harris County, Texas, do hereby certify that the within instrument which is my office of authentication was filed for registration in my office of _____, 1954, at _____ o'clock _____, 1954, and duly recorded on _____, 1954, at _____ o'clock _____, 1954, in Vol. _____ of record of _____ for said county.

WITNESS my hand and seal of office, at Houston, the _____ day and date last above written.

W.D. MILLER
 Clerk of the County Court, Harris County, Texas

 County Judge

 Commissioner Precinct 1

 Commissioner Precinct 2

 Commissioner Precinct 3

 Commissioner Precinct 4

 Commissioner Precinct 5

 Commissioner Precinct 6

 Commissioner Precinct 7

 Commissioner Precinct 8

 Commissioner Precinct 9

 Commissioner Precinct 10

 Commissioner Precinct 11

 Commissioner Precinct 12

 Commissioner Precinct 13

 Commissioner Precinct 14

 Commissioner Precinct 15

 Commissioner Precinct 16

 Commissioner Precinct 17

 Commissioner Precinct 18

 Commissioner Precinct 19

 Commissioner Precinct 20

 Commissioner Precinct 21

 Commissioner Precinct 22

 Commissioner Precinct 23

 Commissioner Precinct 24

 Commissioner Precinct 25

 Commissioner Precinct 26

 Commissioner Precinct 27

 Commissioner Precinct 28

 Commissioner Precinct 29

 Commissioner Precinct 30

 Commissioner Precinct 31

 Commissioner Precinct 32

 Commissioner Precinct 33

 Commissioner Precinct 34

 Commissioner Precinct 35

 Commissioner Precinct 36

 Commissioner Precinct 37

 Commissioner Precinct 38

 Commissioner Precinct 39

 Commissioner Precinct 40

 Commissioner Precinct 41

 Commissioner Precinct 42

 Commissioner Precinct 43

 Commissioner Precinct 44

 Commissioner Precinct 45

 Commissioner Precinct 46

 Commissioner Precinct 47

 Commissioner Precinct 48

 Commissioner Precinct 49

 Commissioner Precinct 50

 Commissioner Precinct 51

 Commissioner Precinct 52

 Commissioner Precinct 53

 Commissioner Precinct 54

 Commissioner Precinct 55

 Commissioner Precinct 56

 Commissioner Precinct 57

 Commissioner Precinct 58

 Commissioner Precinct 59

 Commissioner Precinct 60

 Commissioner Precinct 61

 Commissioner Precinct 62

 Commissioner Precinct 63

 Commissioner Precinct 64

 Commissioner Precinct 65

 Commissioner Precinct 66

 Commissioner Precinct 67

 Commissioner Precinct 68

 Commissioner Precinct 69

 Commissioner Precinct 70

 Commissioner Precinct 71

 Commissioner Precinct 72

 Commissioner Precinct 73

 Commissioner Precinct 74

 Commissioner Precinct 75

 Commissioner Precinct 76

 Commissioner Precinct 77

 Commissioner Precinct 78

 Commissioner Precinct 79

 Commissioner Precinct 80

 Commissioner Precinct 81

 Commissioner Precinct 82

 Commissioner Precinct 83

 Commissioner Precinct 84

 Commissioner Precinct 85

 Commissioner Precinct 86

 Commissioner Precinct 87

 Commissioner Precinct 88

 Commissioner Precinct 89

 Commissioner Precinct 90

 Commissioner Precinct 91

 Commissioner Precinct 92

 Commissioner Precinct 93

 Commissioner Precinct 94

 Commissioner Precinct 95

 Commissioner Precinct 96

 Commissioner Precinct 97

 Commissioner Precinct 98

 Commissioner Precinct 99

 Commissioner Precinct 100

STATE OF TEXAS
 COUNTY OF HARRIS
 I, W.D. MILLER, Clerk of the County Court of Harris County, Texas, do hereby certify that the within instrument which is my office of authentication was filed for registration in my office of _____, 1954, at _____ o'clock _____, 1954, and duly recorded on _____, 1954, at _____ o'clock _____, 1954, in Vol. _____ of record of _____ for said county.

WITNESS my hand and seal of office, at Houston, the _____ day and date last above written.

W.D. MILLER
 Clerk of the County Court, Harris County, Texas

 County Judge

 Commissioner Precinct 1

 Commissioner Precinct 2

 Commissioner Precinct 3

 Commissioner Precinct 4

 Commissioner Precinct 5

 Commissioner Precinct 6

 Commissioner Precinct 7

 Commissioner Precinct 8

 Commissioner Precinct 9

 Commissioner Precinct 10

 Commissioner Precinct 11

 Commissioner Precinct 12

 Commissioner Precinct 13

 Commissioner Precinct 14

 Commissioner Precinct 15

 Commissioner Precinct 16

 Commissioner Precinct 17

 Commissioner Precinct 18

 Commissioner Precinct 19

 Commissioner Precinct 20

 Commissioner Precinct 21

 Commissioner Precinct 22

 Commissioner Precinct 23

 Commissioner Precinct 24

 Commissioner Precinct 25

 Commissioner Precinct 26

 Commissioner Precinct 27

 Commissioner Precinct 28

 Commissioner Precinct 29

 Commissioner Precinct 30

 Commissioner Precinct 31

 Commissioner Precinct 32

 Commissioner Precinct 33

 Commissioner Precinct 34

 Commissioner Precinct 35

 Commissioner Precinct 36

 Commissioner Precinct 37

 Commissioner Precinct 38

 Commissioner Precinct 39

 Commissioner Precinct 40

 Commissioner Precinct 41

 Commissioner Precinct 42

 Commissioner Precinct 43

 Commissioner Precinct 44

 Commissioner Precinct 45

 Commissioner Precinct 46

 Commissioner Precinct 47

 Commissioner Precinct 48

 Commissioner Precinct 49

 Commissioner Precinct 50

 Commissioner Precinct 51

 Commissioner Precinct 52

 Commissioner Precinct 53

 Commissioner Precinct 54

 Commissioner Precinct 55

 Commissioner Precinct 56

 Commissioner Precinct 57

 Commissioner Precinct 58

 Commissioner Precinct 59

 Commissioner Precinct 60

 Commissioner Precinct 61

 Commissioner Precinct 62

 Commissioner Precinct 63

 Commissioner Precinct 64

 Commissioner Precinct 65

 Commissioner Precinct 66

 Commissioner Precinct 67

 Commissioner Precinct 68

 Commissioner Precinct 69

 Commissioner Precinct 70

 Commissioner Precinct 71

 Commissioner Precinct 72

 Commissioner Precinct 73

 Commissioner Precinct 74

 Commissioner Precinct 75

 Commissioner Precinct 76

 Commissioner Precinct 77

 Commissioner Precinct 78

 Commissioner Precinct 79

 Commissioner Precinct 80

 Commissioner Precinct 81

 Commissioner Precinct 82

 Commissioner Precinct 83

 Commissioner Precinct 84

 Commissioner Precinct 85

 Commissioner Precinct 86

 Commissioner Precinct 87

 Commissioner Precinct 88

 Commissioner Precinct 89

 Commissioner Precinct 90

 Commissioner Precinct 91

 Commissioner Precinct 92

 Commissioner Precinct 93

 Commissioner Precinct 94

 Commissioner Precinct 95

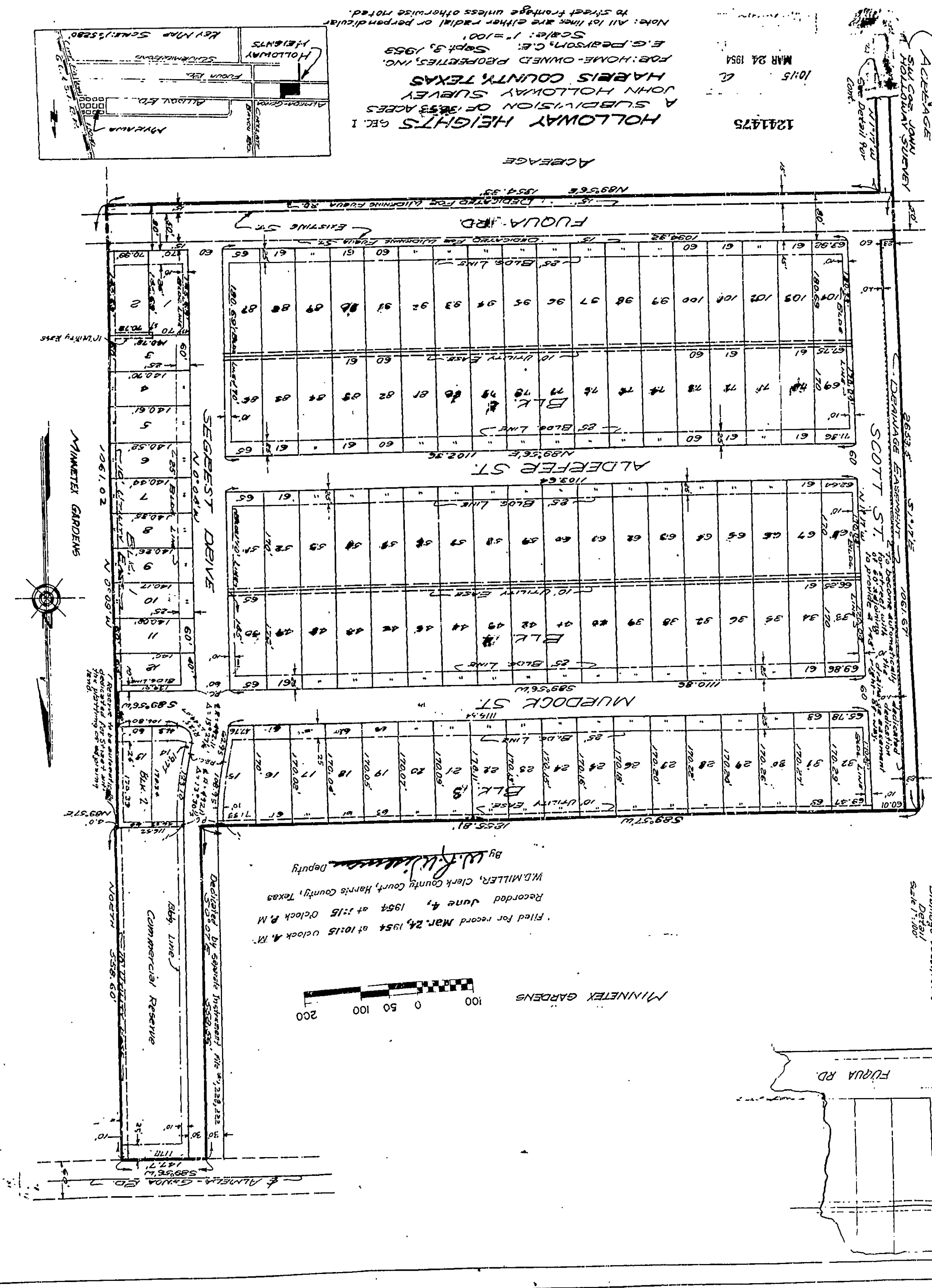
 Commissioner Precinct 96

 Commissioner Precinct 97

 Commissioner Precinct 98

 Commissioner Precinct 99

 Commissioner Precinct 100



1291475
 MAR 24 1954
 1015
 12
 FOR HOME-OWNED PROPERTIES, INC.
 E.G. PEARSON, C.E.
 Sept. 3, 1953
 Scale: 1" = 100'
 Name: All lot lines are either radial or perpendicular to street frontage unless otherwise noted.

Filed for record Mar. 24, 1954 at 10:15 o'clock A.M.
 Recorded June 4, 1954 at 1:15 o'clock P.M.
 W.D. MILLER, Clerk, Harris County, Texas
 Deputy

MINNETEK GARDENS
 0 50 100 200

Drainage easement
 6' x 17 1/2' easement
 10' x 17 1/2' easement
 15' x 17 1/2' easement
 20' x 17 1/2' easement
 25' x 17 1/2' easement
 30' x 17 1/2' easement
 35' x 17 1/2' easement
 40' x 17 1/2' easement
 45' x 17 1/2' easement
 50' x 17 1/2' easement
 55' x 17 1/2' easement
 60' x 17 1/2' easement
 65' x 17 1/2' easement
 70' x 17 1/2' easement
 75' x 17 1/2' easement
 80' x 17 1/2' easement
 85' x 17 1/2' easement
 90' x 17 1/2' easement
 95' x 17 1/2' easement
 100' x 17 1/2' easement