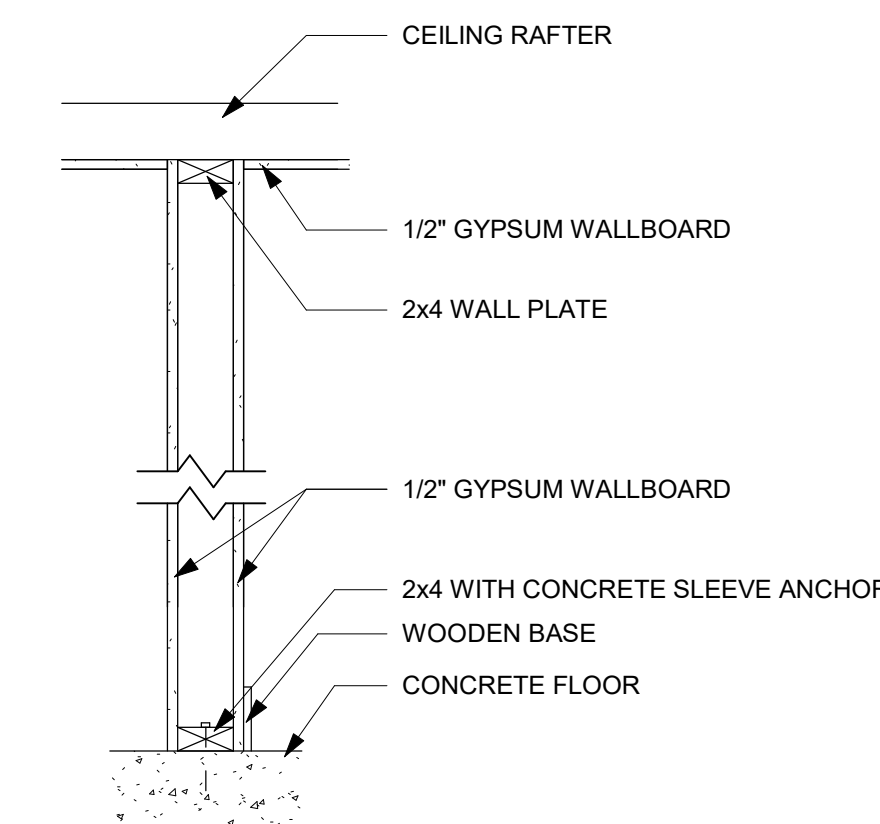


**REQUIRED INSULATION & FENESTRATION VALUES:**

TO COMPLY WITH ENERGY CONSERVATION, THE VALUES BELOW ARE TO BE SPECIFIED FOR THE INSULATION AND FENESTRATION TO MEET REQUIREMENTS FOR CLIMATE ZONE 2. SEE THE R-VALUE COMPUTATION COMPLIANCE METHOD (SECTION R402.1.2 OF THE 2015 IECC).

MAXIMUM FENESTRATION U-FACTOR: 0.40 (0.65 FOR SKYLIGHTS\*)  
MAXIMUM GLAZED FENESTRATION SHGC: 0.25  
MINIMUM CEILING R-VALUE: 38  
MINIMUM WALL VALUE: 13  
MINIMUM FLOOR R-VALUE: 13

\*SKYLIGHTS MAY BE EXCLUDED FROM GLAZED FENESTRATION SHGC REQUIREMENTS IN CLIMATE ZONES 1 THROUGH 3 WHERE THE SHGC FOR SUCH SKYLIGHT DOES NOT EXCEED 0.30



**PARTITION TYPES**

SCALE: 1" = 1'-0"

**PLAN NOTES**

1. ALL CONSTRUCTION TO COMPLY WITH ALL IBC 2012, IRC 2012 AND ALL APPLICABLE CITY OF HOUSTON BUILDING CODES.
2. ALL CONSTRUCTION TO COMPLY WITH ALL APPLICABLE ENERGY CODES.
3. VERIFY ALL DIMENSIONS. DIMENSIONS ARE TO FINISH WALL.
4. ALL SLEEPING ROOMS SHALL HAVE AN OPERABLE ESCAPE ROUTE WITH A MINIMUM CLEAR OPEN AREA OF 5.7 SQFT. MAX HEIGH 44" A.F.F. MIN. CLEAR WIDTH OPENING 20" MIN. CLEAR HEIGHT OPENING 24". SEE WINDOW SCHEDULE.
5. ALL GUARDRAILS TO BE 26" MINIMUM. COMPLY WITH SECT. R316. OPENINGS SHALL NOT ALLOW A 4" SPHERE TO PASS.
6. HANDRAILS TO BE 1 1/4" DIAMETER AT 34" ABOVE NOSING. EXTEND 12" BEYOND TOP AND BOTTOM RISERS WITH RETURNED ENDS.
7. ALL WINDOWS TO HAVE LOW E GLASS. ADD SHIM SPACE TO ROUGH OPENINGS.
8. PULL DOWN ATTIC ACCESS STAIRWAY SHALL COMPLY WITH SECTION M1305.1.3 30"x54" RATER FOR 250 LBS. LIVE LOAD.