

REPUBLIC GRAND RANCH – SPEC HOME FINAL COLOR PHOTOS

1

10420 WAGON PASS TRAIL
WILLIS, MONTGOMERY COUNTY, TEXAS 77378

NOTE: COLORS MAY BE OFF DUE TO PRINTER AND CAMERA

DESIGN TECH HOMES
CUSTOM  BUILDER

09/23/2021

EXTERIOR

2

**METAL ROOF: BERRIDGE W/ STANDING SEAM STRIATIONS
MATTE BLACK**

**SHINGLES MANUFACTURER / COLOR: CERTAINTEED LANDMARK /
MOIRE BLACK**

ROOF VENTS: RIDGE VENTS

SHUTTER STAIN COLOR: 709 BLACK WALNUT

SHUTTER STYLE: BOARD & BATTEN

CEDAR WRAPPED COLUMN STAIN COLOR: 709 BLACK WALNUT

CEMENT SIDING STYLE/SIZE: BOARD & BATTEN

CEMENT SIDING PAINT COLOR: PPG PURE WHITE (NO TINT)

SOFFIT PAINT COLOR: PPG PURE WHITE (NO TINT)

**TRIM, FASCIA & WINDOW TRIM PAINT COLOR: PPG PURE WHITE
(NO TINT)**

WINDOW HEADERS PAINT COLOR: PPG PURE WHITE (NO TINT)

GABLE TRUSS/TRELLIS STAIN COLOR: 709 BLACK WALNUT

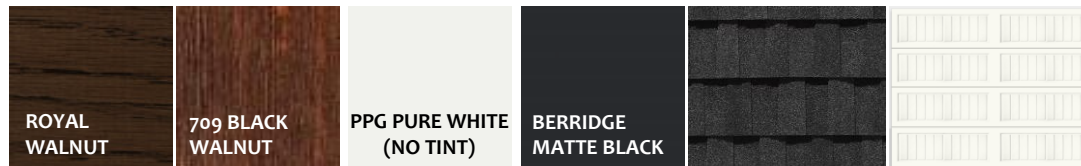
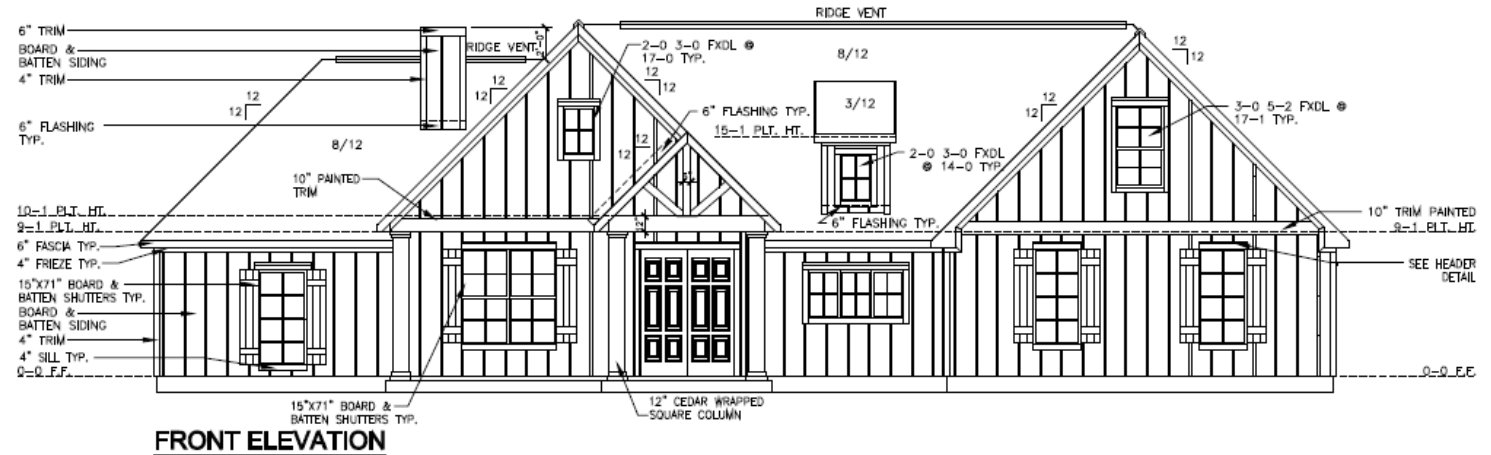
**GARAGE DOOR COLOR: WAYNE-DALTON FACTORY FINISH WHITE
* DO NOT PAINT ***

GARAGE DOOR STYLE: 9100 SERIES SONOMA RANCH

PORCH FLOORING FRONT & REAR: CONCRETE

WINDOW FRAME: WHITE INTERIOR VINYL

FRONT DOOR COLOR: ROYAL WALNUT (DARK)



EXTERIOR FRONT DOOR AND HARDWARE

3



LEVEL 4 SEYBRO
MARGINAL 6 LITE OVER 1 PANEL
STAINED ROYAL WALNUT (DARK)



KWIKSET SAN CLEMENTE HANDLESET
W/ HALIFAX SQUARE DEADBOLT
MATTE BLACK

INTERIOR TRIM:
KWIKSET HALIFAX SQUARE LEVER
MATTE BLACK

OTHER EXTERIOR DOORS & HARDWARE

4



FULL LITE
DINING ROOM



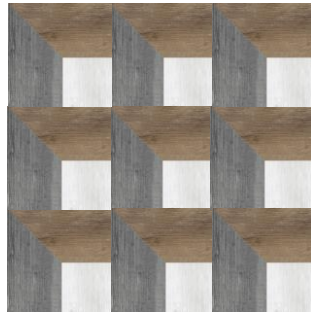
KWIKSET HALIFAX SQUARE KEYED
ENTRY KNOB
W/ SINGLE CYLINDER DEADBOLT
MATTE BLACK

FLOORING

5



**LVP: LEVEL 8 ARMSTRONG
EMPOWER / SCANDIA OAK / REINDEER BROWN
4", 6", 7"Ws x 72" L
STAGGERED FRONT TO BACK**



**TILE: LEVEL A2 DAL TILE
CHOREO 10X10 ENCAUSTIC DECOS
SEQUENCE CH36**

**GROUT: 545 BLEACHED WOOD
PATTERN: STRAIGHT**



**TILE: LEVEL 2 DAL TILE
STELLA VISTA SV17 GOLDEN SAND 12X24**

**GROUT: 10 ANTIQUE WHITE
PATTERN: STAGGERED 33% SIDE TO SIDE**

KITCHEN, PANTRY, & ISLAND

6

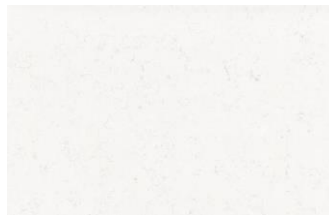


LVP: LEVEL 8 ARMSTRONG
EMPOWER / NORDEN OAK / OSLO BROWN
9\"W5 x 72\" L
STAGGERED FRONT TO BACK



BACKSPLASH: LEVEL A6 DAL TILE
PATARA STONE / SOLTO WHITE
INSIGNIA 1.25X6 MOSAIC

GROUT: 11 SNOW WHITE



COUNTERTOPS: LEVEL 6 QUARTZ
SILESTONE / MIAMI VENA
3CM STRAIGHT EDGE W/ ROUNDED CORNERS



HARDWARE PULLS:
ELEMENTS / SLADE
984-128BNBDL



HARDWARE PULLS:
ELEMENTS / SLADE
984-96BNBDL



ISLAND CABINETS: TIMBERLAKE
SONOMA 5PC MAPLE SLATE



CABINETS: TIMBERLAKE
SONOMA 5PC PAINTED STONE

KITCHEN PLUMBING FIXTURES

7



**DELTA TRINSIC 9659-KS-DST
SINGLE HANDLE PULL DOWN SPRAY
BLACK STAINLESS**



**ELKAY SWUF3320WH
33" FARMHOUSE DOUBLE BASIN W/
CUTTING BOARD**

KITCHEN APPLIANCES

8



ZLINE KL3CRN-36
36" RANGE HOOD W/CROWN MOLDING
STAINLESS STEEL



ZLINE RA-36
36" PROFESSIONAL 6-GAS BURNER /ELECTRIC OVEN
FREESTANDING RANGE



ZLINE MWD-1
24" 1.2 CU.FT. MICROWAVE DRAWER
STAINLESS STEEL



ZLINE DW-304-H-24
24" BUILT-IN W/TRADITIONAL HANDLE
STAINLESS STEEL

MASTER BATH

9



LVP: LEVEL 8 ARMSTRONG
EMPOWER / NORDEN OAK / OSLO BROWN
9"Ws x 72" L
STAGGERED FRONT TO BACK



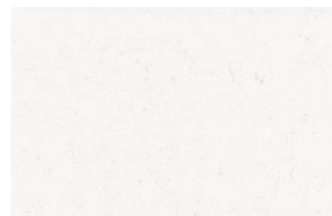
SHOWER FLOOR: TILE LEVEL A4
DAL TILE DECORATIVE PEBBLE
DA06 CREAMY SAND

GROUT: 545 BLEACHED WOOD



SHOWER SURROUND & PONY WALL:
LEVEL 5 DAL TILE
FLORENTINE FL06 CARRARA 12X24

GROUT: 11 SNOW WHITE
PATTERN: STAGGERED 33% HORIZONTAL



VANITY & PONY WALL CAP: LEVEL 6 QUARTZ
SILESTONE / MIAMI VENA
3CM STRAIGHT EDGE W/ ROUNDED CORNERS



HARDWARE PULLS:
ELEMENTS / SLADE
984-128BNBDL



HARDWARE PULLS:
ELEMENTS / SLADE
984-96BNBDL



CABINETS: TIMBERLAKE
SONOMA 5PC PAINTED HARBOR

MASTER PLUMBING FIXTURES

10



**DELTA ASHLYN T-2764-BL
MATTE BLACK 2-HANDLE
ROMAN TUB FAUCET**



**DELTA ASHLYN 3564-BLMPU-DST
MATTE BLACK 2-HANDLE WIDESPREAD FAUCET**



**DELTA ASHLYN T14264-BL/R10000
MATTE BLACK MF MONITOR SHOWER KIT**



**HAND TOWEL BAR
75608-BL**



**PAPER HOLDER
756500-BL**



**TOWEL BAR
75624-BL**



**DELTA DORVAL 75660-BL
UNIVERSAL TANK LEVER
MATTE BLACK**



**PALOMA FS-2051
ACRYLIC FREESTANDING SOAKER / WHITE
66-15/16 X 31-1/2 X 22-13/16**



**TMC-221 PORCELAIN RECTANGLE
UNDERMOUNT SINK - WHITE**

BATH NO. 2

11



FLOOR TILE: LEVEL 2 DAL TILE
STELLA VISTA SV17 GOLDEN SAND 12X24

GROUT: 10 ANTIQUE WHITE
PATTERN: STAGGERED 33% SIDE TO SIDE



TUB/SHOWER SURROUND:
LEVEL 2 DAL TILE
CASSARO CO01 BLANC 18 X 18

GROUT: 172 URBAN PUTTY
PATTERN: STRAIGHT



VANITY: LEVEL 1 QUARTZ
SILESTONE / BLANCO MATRIX
1.6CM STRAIGHT EDGE W/ ROUNDED CORNERS



HARDWARE PULLS:
ELEMENTS / SLADE
984-96BNBDL



CABINETS: TIMBERLAKE
SONOMA 5PC MAPLE TRUFFLE

BATH NO. 2 PLUMBING FIXTURES

12



BOOTZ: ALOHA PORCELAIN ENAMEL TUB / WHITE
60 X 30 X 14 1/4"



DELTA ASHLYN 2564-BLMPU-DST
MATTE BLACK 2-HANDLE CENTERSET FAUCET



TMC-221 PORCELAIN RECTANGLE
UNDERMOUNT SINK - WHITE



DELTA DORVAL 75660-BL
UNIVERSAL TANK LEVER
MATTE BLACK



DELTA ASHLYN T14464-BL/R10000
MATTE BLACK MF MONITER SHOWER KIT



HAND TOWEL BAR
75608-BL



PAPER HOLDER
756500-BL



TOWEL BAR
75624-BL

POWDER

13



LVP: LEVEL 8 ARMSTRONG
EMPOWER / NORDEN OAK / OSLO BROWN
9"W x 72" L
STAGGERED FRONT TO BACK



VANITY: LEVEL 1 QUARTZ
SILESTONE / BLANCO MATRIX
1.6CM STRAIGHT EDGE W/ ROUNDED CORNERS



HARDWARE PULLS:
ELEMENTS / SLADE
984-96BNBDL



CABINETS: TIMBERLAKE
SONOMA 5PC PAINTED HARBOR

POWDER PLUMBING FIXTURES

14



**TMC-221 PORCELAIN RECTANGLE
UNDERMOUNT SINK - WHITE**



**DELTA DORVAL 75660-BL
UNIVERSAL TANK LEVER
MATTE BLACK**



**DELTA ASHLYN 2564-BLMPU-DST
MATTE BLACK 2-HANDLE CENTERSET FAUCET**



**HAND TOWEL BAR
75608-BL**



**PAPER HOLDER
756500-BL**

FIREPLACE

15



ALLUSION 60" ELECTRIC LINEAR FIREPLACE



**SURROUND: LEVEL 4 DAL TILE
AFFINITY AF01 CREAM 12X24**

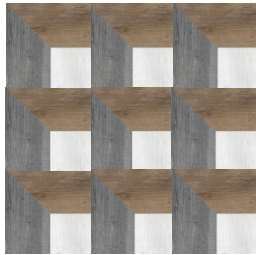
**GROUT 545 BLEACHED WOOD
PATTERN: STRAIGHT**



**ACCENT WALL COLOR EACH SIDE OF FIREPLACE
PPG 1007-7 BARK**

UTILITY & MUD ROOM

16



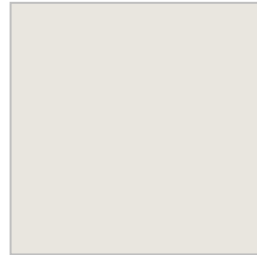
UTILITY FLOORING

TILE: LEVEL A2 DAL TILE
CHOREO 10X10 ENCAUSTIC DECOS
SEQUENCE CH36

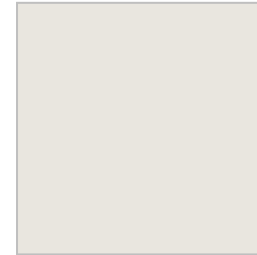
GROUT: 545 BLEACHED WOOD
PATTERN: STRAIGHT



COUNTERTOP: LEVEL 4 QUARTZ
MC SURFACES / BLANCO CITY
3CM STRAIGHT EDGE W/ ROUNDED CORNERS



JOB BUILT OPEN SHELVES PAINTED:
PPG 14-24 DOGWOOD BLOSSOM



MUD ROOM
JOB BUILT BENCH & OPEN CUBBIES PAINTED:
PPG 14-24 DOGWOOD BLOSSOM



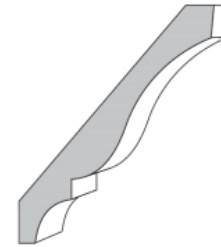
LVP: LEVEL 8 ARMSTRONG
EMPOWER / NORDEN OAK / OSLO BROWN
9"Ws x 72" L
STAGGERED FRONT TO BACK

INTERIOR DOORS, TRIM AND HARDWARE

17



ROCKPORT 5-PANEL
SMOOTH DOOR



CROWN MOLDING
BMC 48



DOOR CASING
1X4 MDF



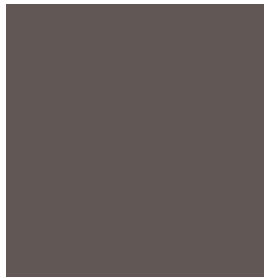
BASEBOARDS
1X6 MDF



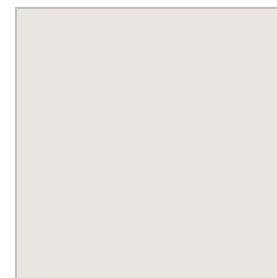
KWIKSET HALIFAX SQUARE LEVEL MATTE BLACK

INTERIOR PAINT

18



ACCENT WALL COLOR EACH SIDE OF FIREPLACE
PPG 1007-7 BARK



WALLS, CEILINGS, CLOSETS, & TRIM:
PPG 14-24 DOGWOOD BLOSSOM

INTERIOR & EXTERIOR LIGHTING

19



**CORONA 10206CLBK
BLACK 9-LIGHT CHANDELIER**



KICHLER 52\"/>A black ceiling fan with five blades and a central light fixture. The fan is shown from a top-down perspective.



**CORONA 10213CLBK
3-LIGHT MATTE BLACK BATH VANITY**



**CORONA 10214CLBK
4-LIGHT MATTE BLACK BATH VANITY**

INSTALL WITH GLOBES FACING DOWN



**ESSENTIALS 5840FTBK
1-LIGHT FLUSH MOUNT**



**ESSENTIALS 5841FTBK
2-LIGHT FLUSH MOUNT**



22\"/>A long, thin, white LED light fixture, likely for under-cabinet lighting.

EXTERIOR LIGHTING

20



MISENO 17" TALL OUTDOOR WALL SCNCE
MODEL: ML62654-PBZ
POWDER COAT BRONZE



QUOIZEL WVR11612EK (CAROL'S 768221 EARTH)
BLACK 2-LIGHT OUTDOOR FLUSH MOUNT