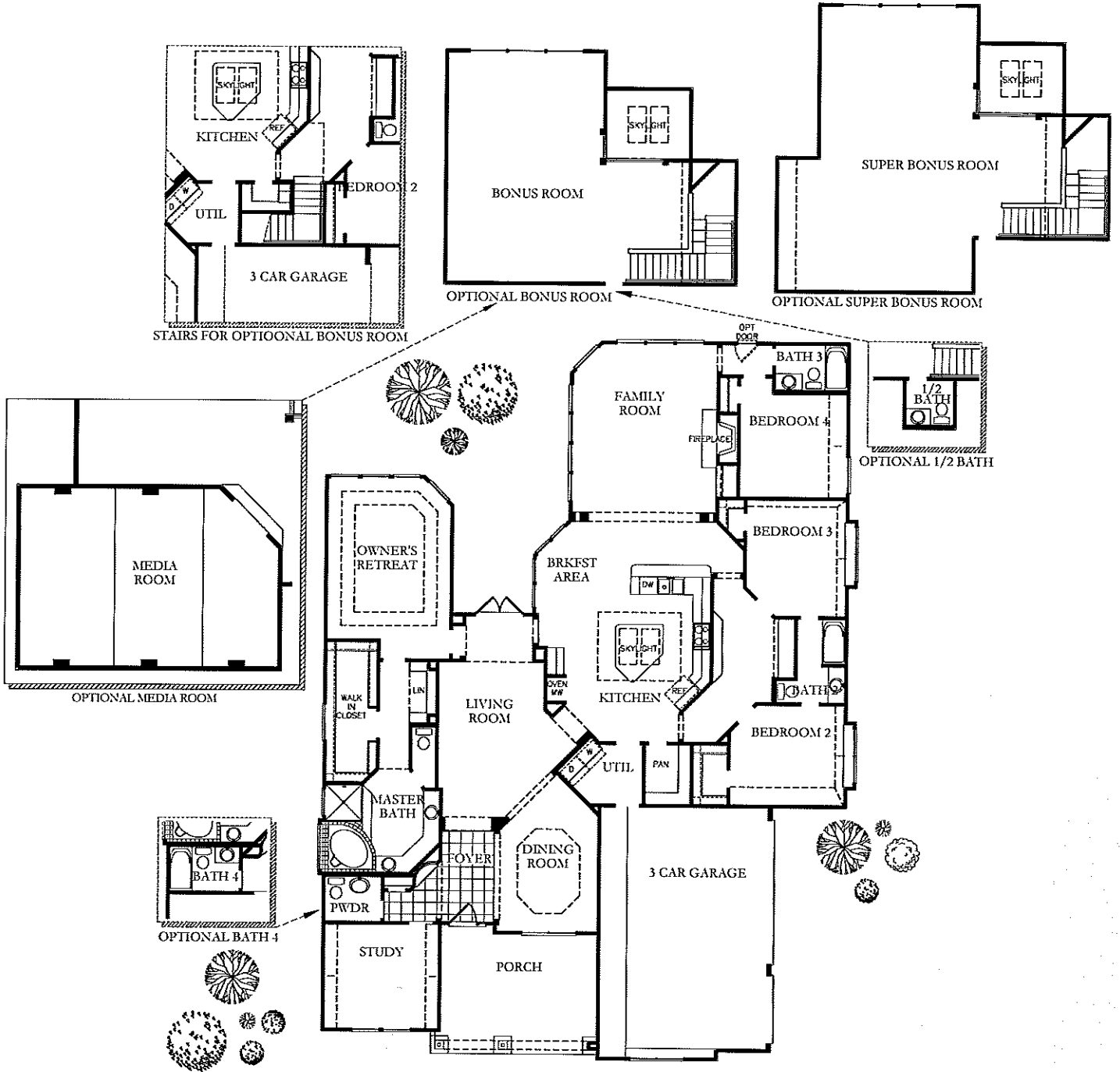


FLOORPLAN OPTIONS

THE RIVERGLEN



4/22/05
1597 DALLAS

DavidWeekleyHomes.com

Prices, plans, dimensions, features, specifications, materials and availability of homes or communities are subject to change without notice or obligation. Illustrations are artist depictions only and may differ from completed improvements. Not all options available in all communities. Copyright 2003 © David Weekley Homes - All Rights Reserved.

Peace of Mind

EXTERIOR

- * Innovative, award-winning designs
- * Wide variety of American made brick
- * **James Hardie** lap siding and trim products
- * **Monarch** 100% acrylic exterior paint enhanced with multi-colored designer paint program
- * Mahogany front door
- * **Kwikset** front door handleset
- * Garage (per plan) with **Wayne Dalton** insulated, pinch-resistant, garage door
- * Gutters across entire front of home with 3' wraps at corners
- 12'x12' back patio (except with covered porch)

KITCHEN

- * Spacious gourmet Kitchen
- * 42" flat panel cabinets with crown moulding
- * **GE** Stainless appliances with electric smooth top cooktop (excludes refrigerator)
- * Solid surface countertops with multiple colors to select from (Includes: **Granite & Silestone**)
- * Ceramic tile backsplash
- * **Moen** stainless steel kitchen sink
- * **Moen** faucet with hose sprayer
- * Ice maker connection for refrigerator (refrigerator not included)
- * Garden window over Kitchen sink (per plan)
- * 1/3 horsepower disposal

INTERIOR

- * **LifeDesign** program that consists of Sight Lines, Room Placement, Traffic Patterns, Windows and Lights, and Massing and Proportion
- * Varied raised and coffered ceilings (per plan)
- * **Monarch**, durable interior paint with contrasting white ceilings
- * Crown moulding in Entry, Dining Room, Study, and Formal Living Room
- * Baseboard and moulding lacquered, and pre-primed for superior finish
- * **Sea Gull Lighting** fixtures throughout home
- * Raised panel interior doors with **Kwikset** knobs
- * Closets with wood shelves and rod clothing supports
- * Saxony carpet with 5 lb. pad
- * Ceramic Tile in Entry, Kitchen/Breakfast, Master Bath, Secondary Baths, Powder Bath, & Utility
- * Ceiling fans in Owner's Retreat & Family Room
- * Combo smoke & carbon monoxide detectors with battery back-up
- * Pre-wired for cable television and telephone
- * **Honeywell** structured wiring panel
- * **Honeywell** programmable digital thermostat
- * Pest defense system installed in the walls
- * Borate termite treatment
- * Privacy locks on Secondary Baths, Powder Bath, Owner's Retreat & Master Bath
- * Spacious and private Owner's Retreat & Secondary Bedrooms
- * Walk-in closet in Owner's Retreat (per plan)

BATHS

- * **Master Bath:**
 - Solid surface vanity tops with undermount sinks
 - **Kohler** soaker bathtub with ceramic tile surround
 - **Moen** widespread faucets
 - All high, stained, flat panel vanity cabinets
 - **St. Thomas** comfort height, elongated commode
 - Glass enclosed shower
 - Polished edge mirrors
 - **Moen CSI** towel bar and paper holder
- * **Powder Room:**
 - **Moen** widespread faucets
 - **St. Thomas** comfort height, elongated commode
 - **Kohler** pedestal Sink
 - Decorative Mirror
 - **Moen CSI** towel bar and paper holder
- * **Secondary Baths:**
 - Solid surface vanity tops with drop-in sinks
 - **Kohler** bathtub with ceramic tile surround
 - **Moen** faucets
 - Stained flat panel vanity cabinets
 - **St. Thomas** comfort height commode
 - Polished edge mirrors
 - **Moen CSI** towel bar and paper holder

NEW HOME CENTER

- * Three Idea Homes with state-of-the-art features
- * Over 20,000 pre-priced selections to choose from, many of which are available for viewing
- * Neighborhood Consultant available to help you with community information
- * Personalized design appointment with professional, degreed Designers

CONSTRUCTION & WARRANTY STANDARDS

- * Homeowner Portfolio defines process of building a David Weekley Home as well as provides detailed warranty information
- * Personal Builder
 - o Scheduled meetings during building process
 - o Weekly updates
- * Engineered foundations per community
- * Foundation engineering company inspects three times: prior to pour, at pour, and after cable stress
- * **Burgess Construction Consultants** perform detailed independent inspections prior to sheetrock and prior to closing
- * Specialized leak test on all plumbing pipes and fixtures prior to carpet installation
- * All **Moen** faucets come with a lifetime manufacturer's warranty
- * **Moen** temperature regulating shower valves
- * **James Hardie** products come with a 25-year manufacturer's warranty on siding and 10-year manufacturer's warranty on trim, fascia and soffit
- * **Flowguard Gold** corrosion resistant plumbing
- * Matched **Lennox** heating and air conditioning with 5-year warranty on all parts, 20-year warranty on heat exchanger
- * 10-year structural warranty, 2-year warranty on portions of your home's major mechanicals, and 1-year limited warranty on defects and workmanship
- * Centralized In-House Warranty
- * **Cutler-Hammer** whole home surge protection

WEEKLEY GREEN

- * All homes **Diamond Level Environments for Living**
- * Air conditioning ducts are tested to exceed **Department of Energy** standards
- * All homes **Energy Star** certified
- * Jump ducts in secondary bedrooms to balance hot and cold temperatures
- * Walls are tested for air leakage to exceed **Department of Energy** standards
- * **DOW** Super TUFF-R sheathing to resist water and air penetration
- * **DOW** Sill Seal between slab and exterior plate acts as a gasket to minimize air and water infiltration from under outside walls
- * Rapid recovery, natural gas water heater
- * **Monarch/PPG** Low VOC (Volatile Organic Compound) paint
- * Exterior paint with mildicides designed specifically for this climate
- * Specially designed rot resistant door jambs
- * Water resistant barrier at window sills
- * Water barrier for tubs and showers
 - o Hardi-Backer in all water contact areas
 - o Anti-fracture material used at all seams and nails
- * Formaldehyde free fiberglass insulation
- * R-15 insulated exterior wall systems
- * R-19 paperless batt insulation on sloped ceilings
- * R-38 paperless batt or blown insulation in ceilings
- * Vinyl framed, low E2 double pane, high performance energy efficient windows
- * Natural gas for cost effective heat and hot water heater
- * **Lennox** 15 SEER Air Conditioning System
- * Pleated media air filters to catch pollen and mold spores (MERV 10)
- * Radiant barrier decking
- * 95% Efficient furnaces with variable speed motors that
- * Fresh air system

David Weekley Homes Features Subject To Change Without Notice (Expires: 12/31/2008 - C)

