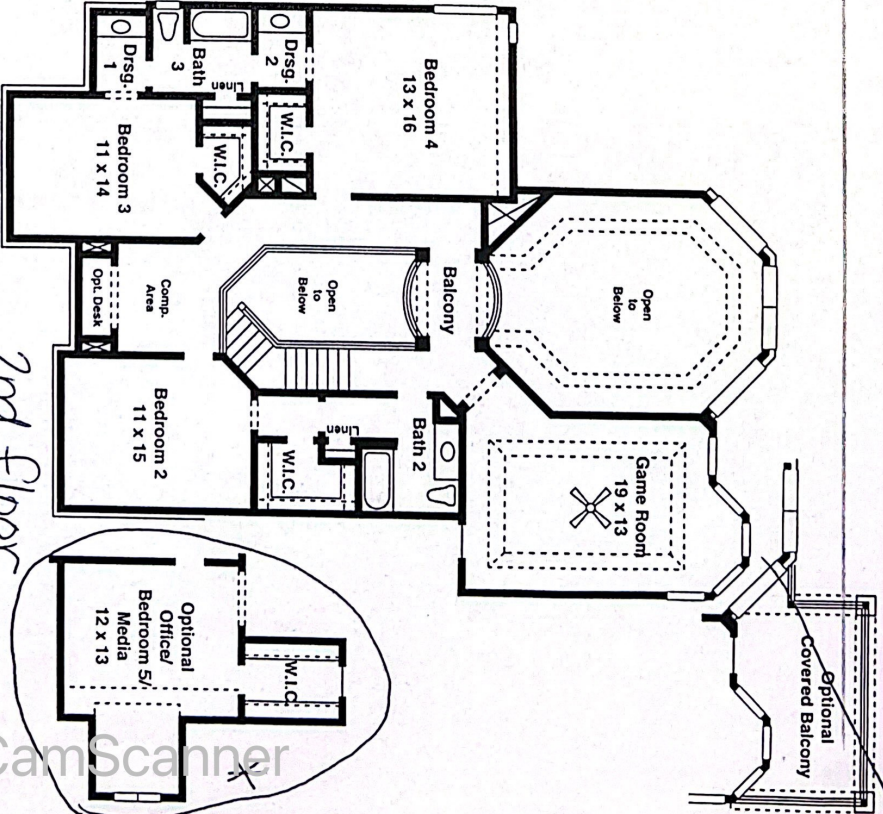
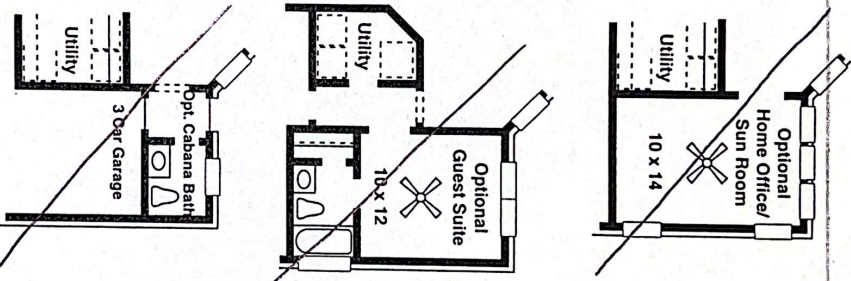
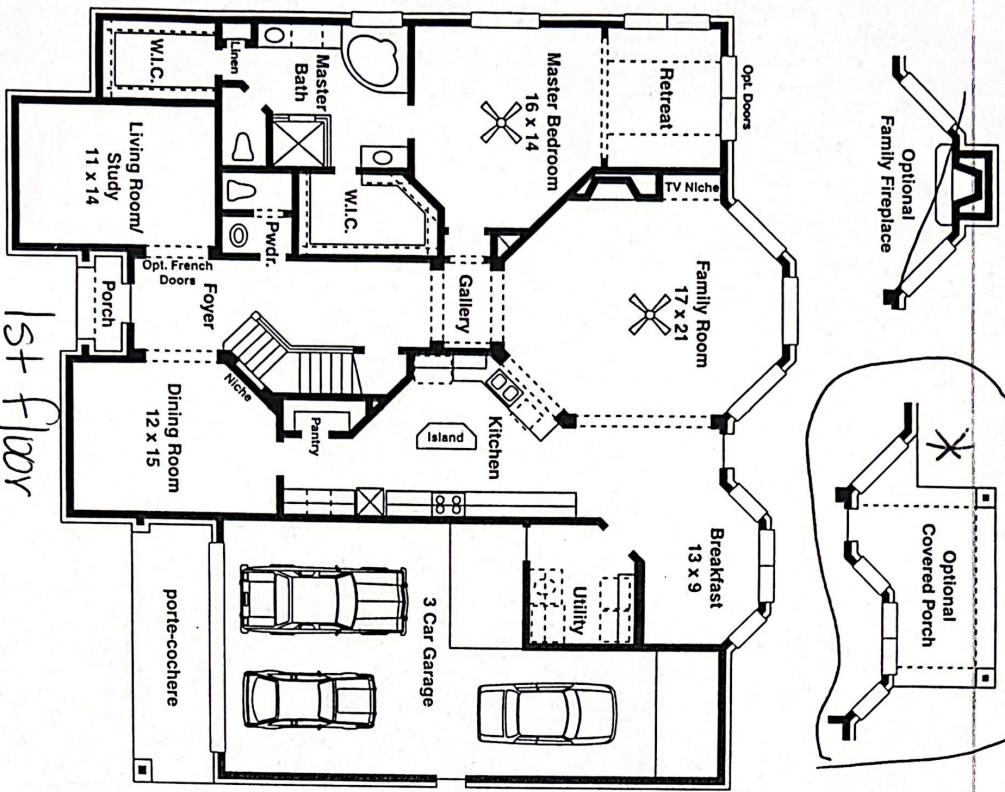


# THE WOODHAVEN



- Flexible floorplan with a variety of options
- Luxurious master suite with vaulted ceiling in retreat
- Dramatic two-story family room opens to breakfast nook and gourmet kitchen
- Spacious game room with vaulted ceiling
- Ample secondary bedrooms with walk-in closets

4 bedroom / 3 1/2 bath / formal dining room / living room with option for study / two-story family room / game room / computer niche / 3 car attached garage

the healthier home by

**NEWMARK HOME S**

www.newmarkhomes.com  
800-840-2700

These drawings are conceptual only and are for the convenience of reference. They should not be relied upon as representations, express or implied, of the final detail of the residences. The builder expressly reserves the right to make modifications, revisions, and changes it deems desirable in its sole and absolute discretion. Dimensions and square footage are approximate and may vary with actual construction. H rev. 8/03/6021



Scanned with CamScanner