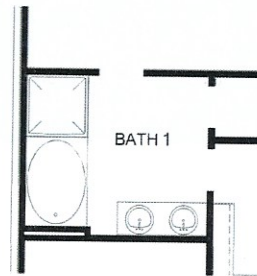


FIRST FLOOR PLAN



Elevation T w/ Optional Woodtone



OPTIONAL SEPARATE
TUB & SHOWER

Home and community information, including pricing, included features, terms, availability and amenities, are subject to change and prior sale at any time without notice or obligation. Pictures, photographs, colors, features, and sizes are for illustration purposes only and will vary from the homes as built. Square footage dimensions are approximate. Buyer should conduct his or her own investigation of the present and future availability of school district and school assignments. D.R. Horton has no control or responsibility for any changes to school districts or school assignments should they occur in the future.



Raintree

Cove, Texas 77523

Interior Features

- **Smart Home Automation:** Includes Smart Thermostat, Wireless Security at exterior doors, electronic deadbolt, Skybell® doorbell, Deako smart switches, smart lighting (one Z-wave switch included), Amazon Echo Dot®
- **Cable and telephone wiring:** Bedroom 1, Family Room and Game Room/Media Room if applicable
- **Cultured Marble vanity tops in bathrooms**
- Oversized walk-in shower at Bath 1
- **Elongated commodes in all baths**
- Pedestal sink in Powder Room
- Smoke detectors with carbon monoxide sensor in common areas
- **Semi-frameless shower in Bath 1**
- Wood shelving in all closets, pantry and utility room for optimal storage use
- **Wood look flooring at Entry, Family/Living/Dining/Hall to Bedrooms First Floor (per plan), Utility, Kitchen/Breakfast and Bathrooms**
- **Moen® lifetime finish warranty plumbing fixtures throughout**
- **Kwikset® brushed nickel interior & exterior door hardware**
- **2" Smooth White Blinds throughout the home** (excluding back door, Bath 1 window(s), sliding glass door(s) & non-operable transom height windows per plan)

Kitchen Features

- **42" painted cabinets with crown molding**
- **Stainless Steel Whirlpool® appliances** (microwave, dishwasher & gas range)
- **Moen® chrome faucet with pull-down spout**
- **Silestone countertops with straight edge**
- Stainless steel, single bowl, undermount kitchen sink with garbage disposal
- **Offset Ceramic Tile Backsplash**
- **DuPure® drinking water filtration system**

Exterior Features

- **Landscape Package** (including front sod)
- Full lite back door
- **Covered Patio**
- Front coach lamps (2)
- **Fully fenced rear yard with gate**
- **IKO® Architectural Shingles - Limited Lifetime Warranty**

Construction & Energy Features

- **Rinnai® Tankless Gas Water Heater**
- **High-efficiency 16 SEER Carrier® air conditioning system** with programmable thermostat and mechanical air ventilation
- HERS (Home Energy Rating System) Index
- **Uponor® PEX Water Delivery System**
- **LP Tech Shield® radiant barrier roof decking**
- Third party quality inspections throughout construction process
- **10 Year Homebuyer's Warranty**
- R-13 fiberglass insulation in exterior walls
- R-19 insulation at sloped ceilings
- R-30 fiberglass insulation in flat ceiling areas
- **Fully sheetrocked and painted garage**
- Engineered post tension foundation
- **Bora-Care® application to protect building materials against wood destroying insects**
- **Double pane, Low-E, vinyl windows**

Rain Tree Cove · 638 Cold Spring Dr, Cove, Texas 77523 · drhorton.com/houston

D.R. Horton is an Equal Opportunity Builder. Home and community information including pricing, features, terms and availability are subject to change prior to sale at any time without notice or obligation. Prices, plans, features and options are subject to change without notice. Additional restrictions may apply. Please check the accuracy of information provided with your Sales Counselor prior to purchasing. Features noted above could be plan specific. Rev. 1.521

RAIN TREE

County, City, Zip	Chambers County, Baytown, TX 77523
HOA	Raintree H.O.A., Inc.
Management Company	Prestige Association Management Group Community Manager: Nora Twohy nora@pamgtx.com
HOA Annual Dues	\$700
Transfer Fee	\$200
School District/Schools	BARBERS HILL ISD Barbers Hill Elementary South Barbers Hill Middle South Barbers Hill High
County Tax Rate	0.53949
School Tax Rate	1.1545
Total Tax Rate	1.69399
Gas Provider	Centerpoint – (713) 659-2111
Electric Provider	www.powertochoose.com
Phone/Cable TV Provider	Comcast: (800) 266-2278
Water/Trash	Aquatex: (877) 987-2782
Post Office	16043 Eagle Drive Mont Belvieu, TX 77580 <i>(Bring copy of HUD statement & picture ID)</i>

Homebuyers are responsible for independently verifying the above information. This information is provided as a courtesy only and a representation of warranty that the information is correct. The companies, providers, schools, rates, and fees listed above are outside of D.R. Horton's control and are subject to change at any time. 01/04/2021

