

1402 Missouri

1402 Missouri St., Houston, TX 77006

NAN
PROPERTIES & CO



HIGHGATE
HOUSTON

Welcome to **1402 Missouri**

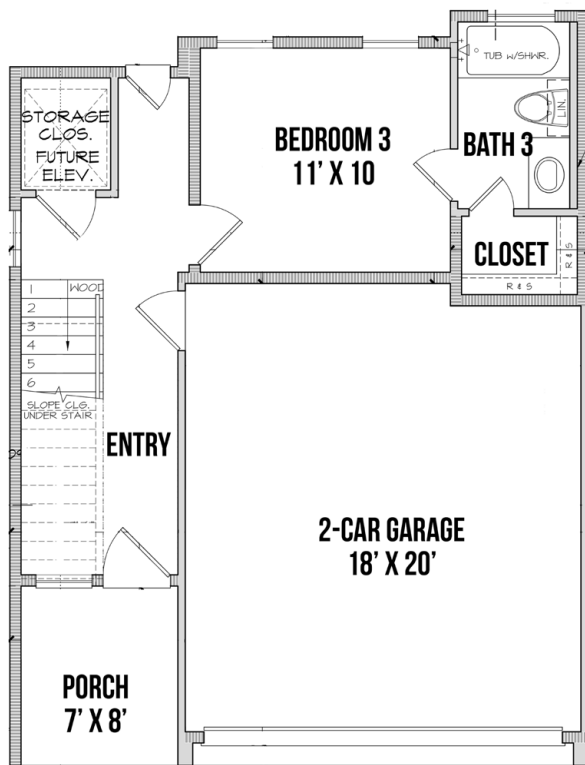
1402 Missouri Project is a beautiful new construction community that is currently in stage two of its development. Built by Highgate Houston, this gated community supports eight gorgeous homes, all offering breathtaking patio views of Downtown. Each home is thoughtfully designed with high-end features all throughout such as White Oak wooden floors, commercial appliances, two balconies, oversized garage, and more. The kitchen areas feature a spacious island, slide-in gas range, custom cabinetry, and beverage chiller. The homes also feature a game room, space for an elevator and a spa-like primary bath. The community is ideally located in vibrant area of Montrose, just minutes from Downtown!



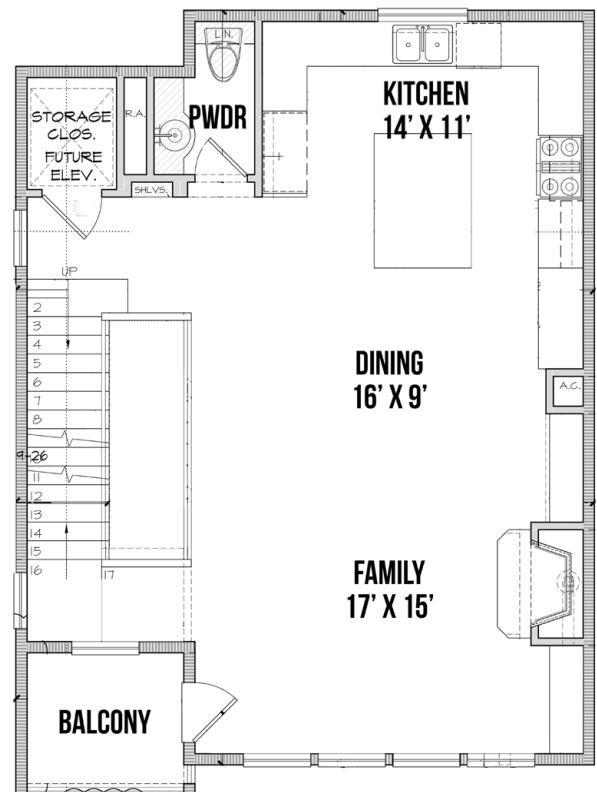
1402 Missouri

FLOOR PLANS

First & Second Floors



First Floor

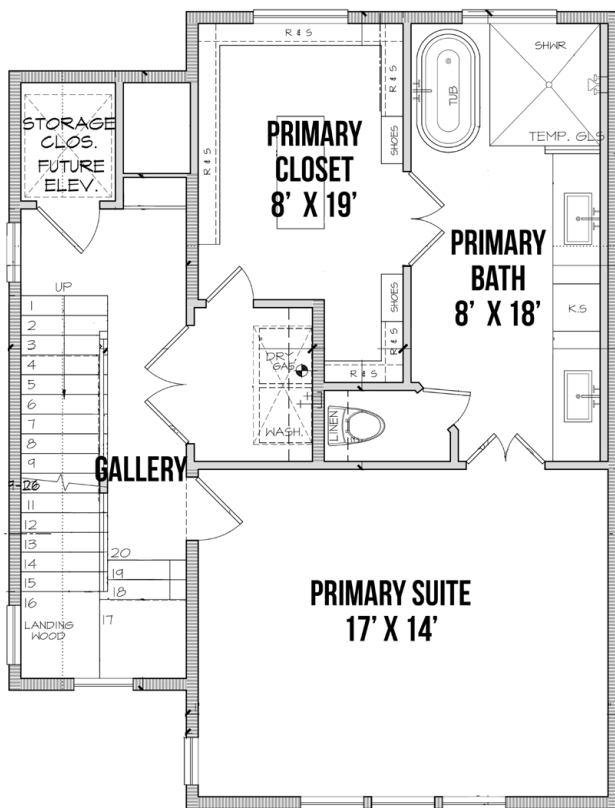


Second Floor

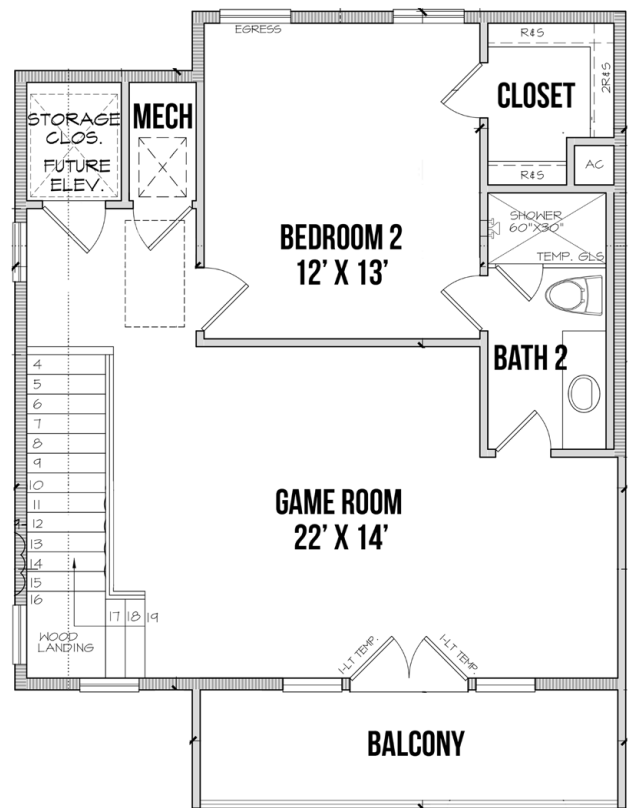
1402 Missouri

FLOOR PLANS

Third & Fourth Floors

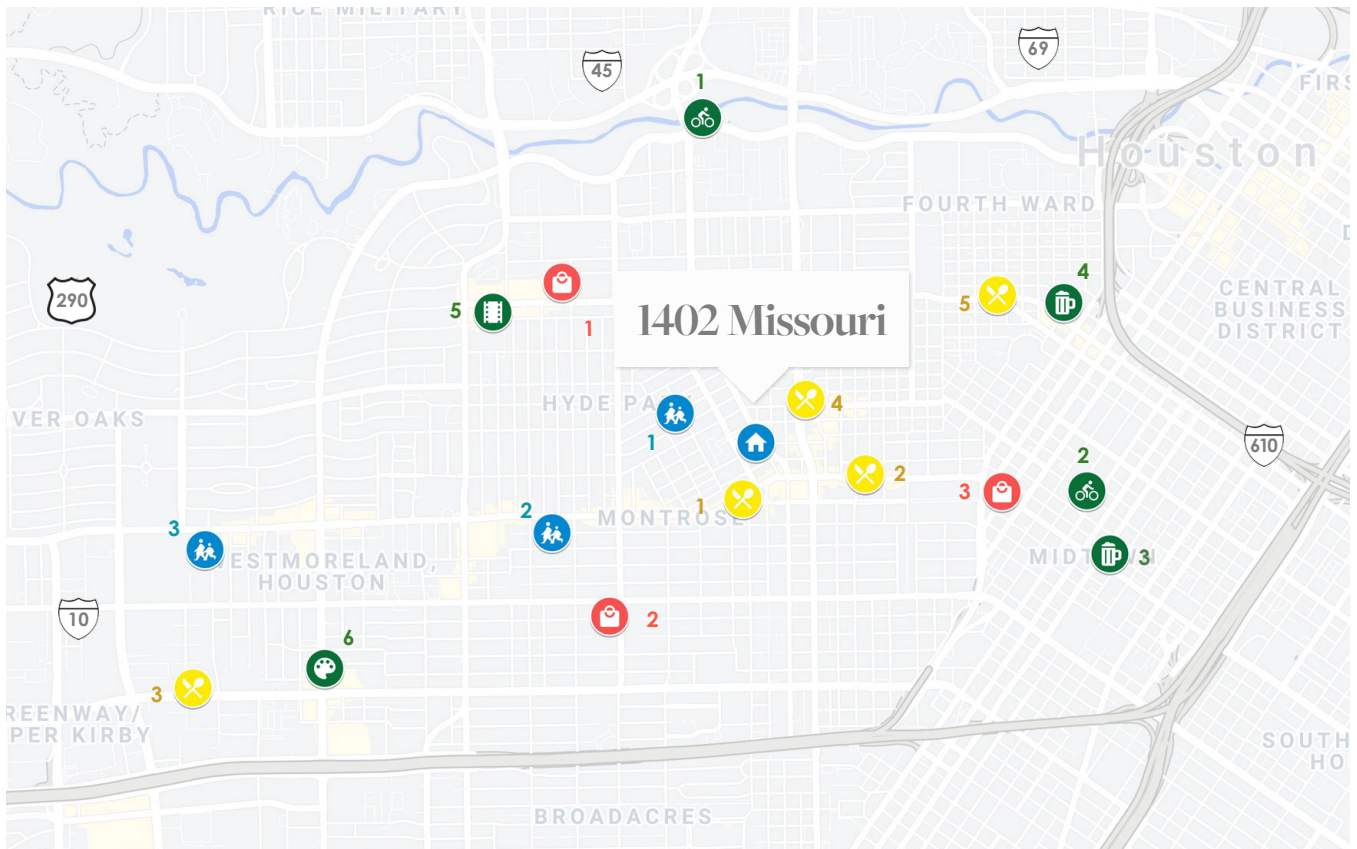


Third Floor



Fourth Floor

Location



Schools

- 1 Wilson Montessori
- 2 Lanier Middle School
- 3 Lanier High School

Shopping

- 1 Kroger
- 2 H-E-B
- 3 Whole Foods

Dining

- 1 Sweetgreen
- 2 Traveler's Table
- 3 El Tiempo Cantina
- 4 La Mexicana
- 5 Lost & Found

Outdoor Activities

- 1 Buffalo Bayou Park
- 2 Midtown Park
- 3 Social Beer Garden
- 4 Komodos
- 5 Landmark's River Oaks Theater
- v Color Factory Houston

Community Information

Emergency Services

Medical	911	
Houston Police Department		802 Westheimer Rd. Houston, TX 77006
Houston Fire Department		1700 Richmond Ave. Houston, TX 77098
Poison Control	(800) 222-1222	
City of Houston	(832) 395-2500	611 Walker Houston, TX 77002

Schools

Wilson Montessori	(713) 942-1470	2100 Yupon St. Houston, TX 77006
Lanier Middle School	(713) 942- 1900	2600 Woodhead St. Houston, TX 77098
Lanier High School	(713) 942- 1900	3325 Westheimer Rd Houston, TX 77098

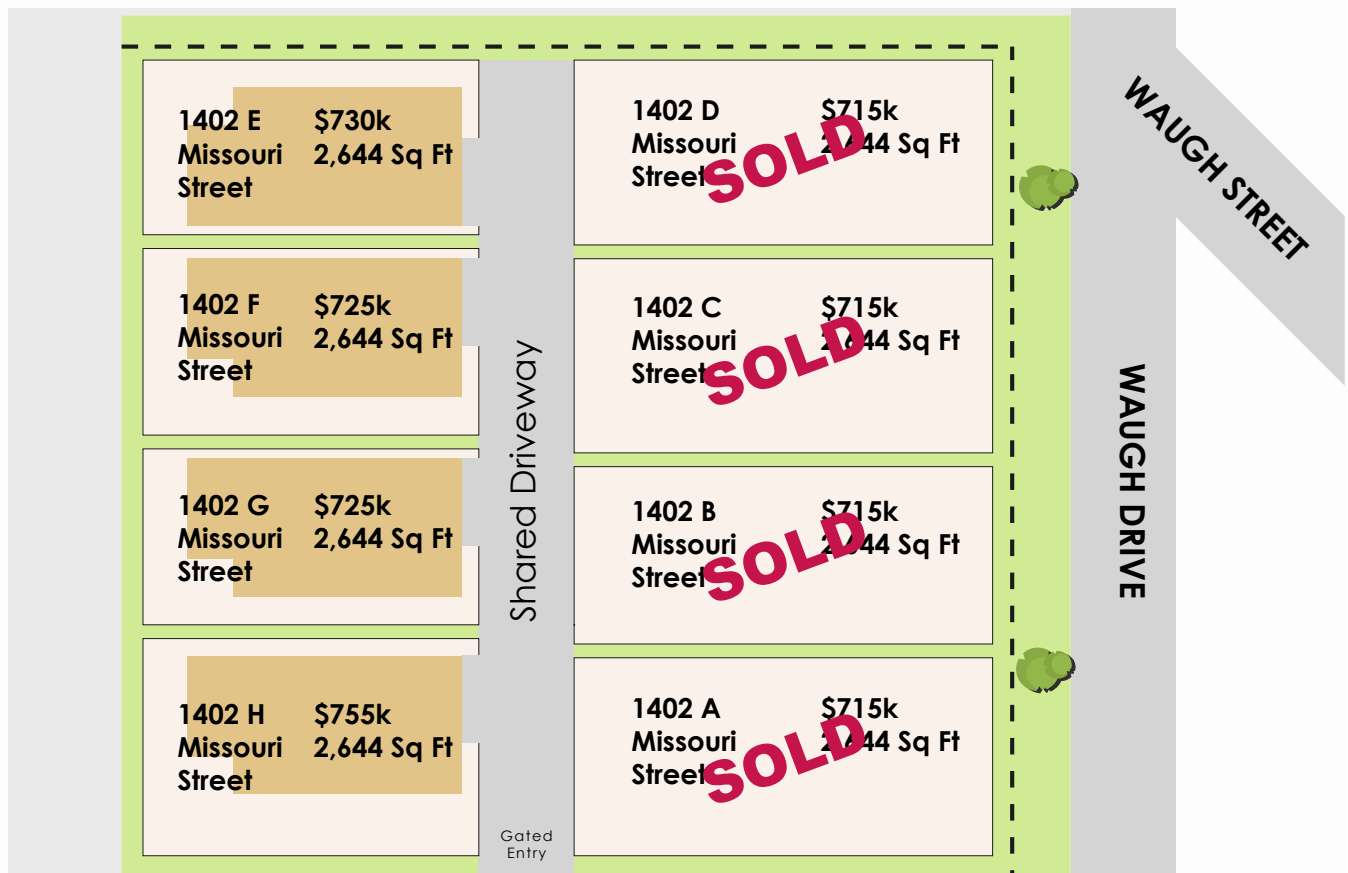
Colleges

Houston Community College Central Campus		1300 Holman St. Houston, TX 77004
---	--	--------------------------------------

Utilities & Services

Telephone & Cable	AT&T	2621 S Shepherd Dr., Suite 143 Houston, TX 77098
Telephone & Cable	Xfinity	5600 Kirby Dr., Suite S4 Houston, TX 77005
Post Office		1900 W Gray St. Houston, TX 77019
CenterPoint Energy		1111 Louisiana St. Houston, TX 77002

Site Map



Finishes



Finish Selection

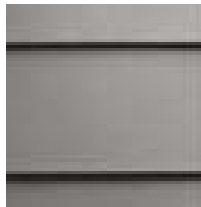
Exterior

OVERHEAD GARAGE DOOR



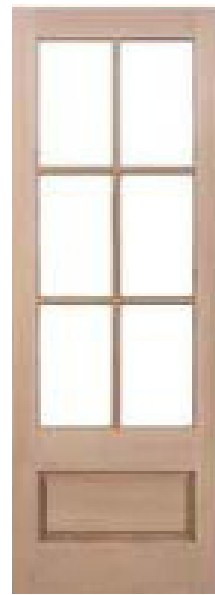
Flush Panel
Steel

SIDING



Siding Boards
Cement Board

DOORS



Front Door
Clear Glass

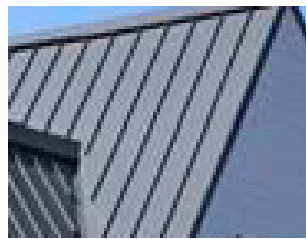


Back Door
Clear Glass

ROOF



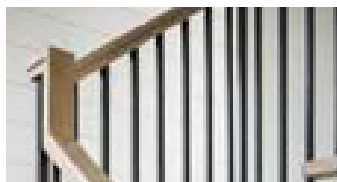
Shingles
Color: Black



Steel

Metal/Fencing

INTERIOR RAILING



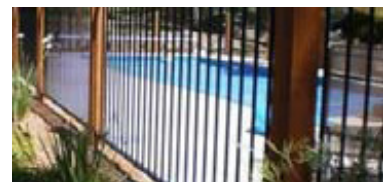
Square pickets w/ wooden handrail
Color: Black/Stain

EXTERIOR RAILING



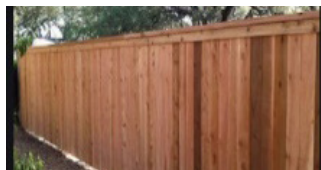
Square pickets w/ wooden handrail
Color: Black (metal) / White (wood)

EXTERIOR GATES/FENCING



Cedar Posts with Vertical Metal Pickets
Color: Black (metal) / Stained (wood)

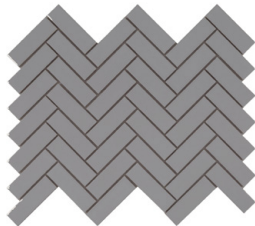
EXTERIOR FENCING



Finish Selection

Tiles/Flooring

FAMILY ROOM



Artemis
Color: White

UTILITY ROOM - FLOOR



Concrete
Color: Black

FLOOR THROUGHOUT



Real Wood Floors
Color: Thames

FLOOR THROUGHOUT



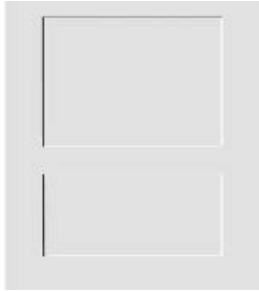
Carpet
Color: Eastglen



Finish Selection

Millwork

INTERIOR DOORS



Panel - recessed
Color: Primed White

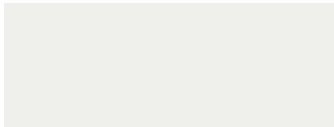
CASING - WINDOWS/DOORS



Square (45 miter corners)
Color: Primed White

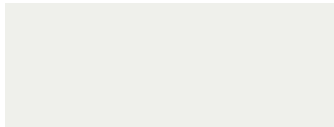
Paint

INTERIOR WALL & TRIM



Color: Extra White
SW7006

INTERIOR CEILINGS & WOOD



Color: Extra White
SW7006

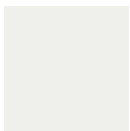
INTERIOR WOOD PARTS



Color: Ebony - Stain

EXTERIOR

- SOFFIT & FASCIA
- LAP SIDING (BODY)
- LAP SIDING (TRIM)
- B&B SIDING (BODY)
- B&B SIDING (TRIM)



Color: Extra White
SW7006 & SW7005

EXTERIOR



Exterior - Louvers & Corbels
Ebony



Exterior - Front Door
Ebony



Exterior - Balcony Doors & Garage Doors
Ebony

Finish Selection

Appliances - Kitchen

RANGE



Thermador
PRO Harmony - 6 Brner"
Slide In Gas Range

VENT



Zephyr
Siena Pro Wall

MICROWAVE



Maytag/Whirl Pool
Fingerprint Resistant"
Built-In & Trim

WINE CENTER



Zephyr
Beverage Cooler single
zone, led lighting, glass
door, SS

DISHWASHER



Thermador
"Emerald w/ PRO
handle" Built-In

Finish Selection

Kitchen

SHAKER (KITCHEN)



Glass Doors Each Side of Range
Color: White



All Spice Rack Trash Pull
Color: White

FAUCET



Kitchen Faucet
Color: Matte Black

COUNTER TOPS



Perimeter
Type: Quartz | Color: Artic White



Island with Waterfall Edge Panels
Type: Marble | Color: Tesoro Bianca

LIGHTING



Bar Pendant
Olde Bronze w/ Seedy Glass

KITCHEN BACKSPLASH



Foundation

Finish Selection

Primary Bathroom

FAUCETS



Primary Bath Faucet
Color: Black



Primary Bath Tub Faucet
Color: Matte Black



Primary Bath Shower Faucet
Color: Matte Black



Primary Bath Ceiling Faucet
Color: Matte Black

HARDWARE



Paper Holder
Color: Matte Black



Towel Bar
Color: Matte Black



Towel Ring
Color: Matte Black

LIGHTING



Octave 2 Light / 3 Light
Matte Black / Clear Glass

MASTER BATHROOM - SHOWER/TUB WALLS



Ripple
Color: Subway White

PRIMARY BATHROOM - FLOOR



Construct
Color: † Polar Night Hexagon

Finish Selection

Other Bathrooms

FAUCETS



3rd Bath Shower Faucet
Color: Matte Black



Powder Room Faucet
Color: Matte Black



2nd and 3rd Bath Faucet
Color: Matte Black



2nd Bath Shower /Tub Faucet
Color: Matte Black

HARDWARE



Paper Holder
Color: Matte Black



Towel Bar
Color: Matte Black



Towel Ring
Color: Matte Black

LIGHTING



Octave 2 Light/ 3 Light
Matte Black / Clear Glass

2ND & 3RD BATHROOM - FLOOR



Concrete
Color: Black

2ND BATHROOM - TUB/SHOWER



Ripple
Color: Subway White

3RD BATHROOM - SHOWER SURROUND



Ripple
Color: Subway White

POWDER ROOM FLOOR



Form
Color: Percey

Finish Selection

Lighting

INTERIOR



Fan
Color: Fresh White

EXTERIOR



Sea Gull Lighting
Color: Black



Fan
Color: Matte Black

Glassware



All Mirrors
Hung and Square



CONTACT ME!



Lisa Peltier
BROKER ASSOCIATE

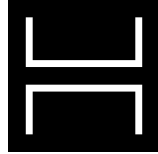
C: 832.370.5664

O: 713.714.6454

E: lisa.peltier@nanproperties.com

Thank You

1402 Missouri



HIGHGATE
HOUSTON

WWW.NANPROPERTIES.COM

2200 POST OAK BLVD #1475, HOUSTON, TX 77056