

2532 Swift Blvd

ELITE TOWN HOMES

STAGE 1

Step **1** **Identify needs**
Delivery of architectural plans



Step **2** **Presentation**
1st design proposal + pricing
Meeting either via zoom or showroom.



Step **3** **Adjustment to Design**
2nd design proposal + pricing



Step **4** **Work Commitment**
Delivery of Contract agreement
Payment + Delivery of Design.



STAGE 2

Step **5** **Definition of design and finishes**
Continuation of adjustments of the design and definition of final appliances and materials.



Step **6** **Site Measurements ***
Site Visit if applicable



Step **7** **Final approval and signature for production**
Signature of final design with measurements of site*, finalized Appliances, materials and any important information related to the Design. Payment is due according contract schedule.



Step **8** **Production Process**
Production lead time start once the order is submitted by Tuesday of each week and step #7 has been completed.



STAGE 3

Step **9** **Dispatch, delivery and furniture installation**
Coordinate delivery and installation date



Step **10** **Signature of delivery certificate**
5 year warranty – for production malfunction
Time to enjoy your space!



Step **11** **Maintenance**
We suggest to hire an annual maintenance service with Madeval personnel to ensure your cabinets maintain a good state.

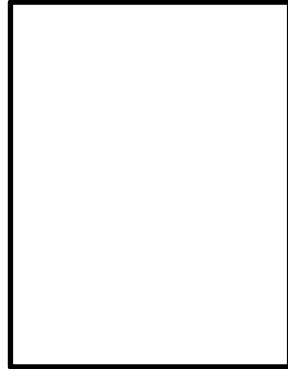
<https://madeval.com/contact-us-form/>

MATERIALS



DUNA PO

INTERIOR STRUCTURE



WHITE

U/C LED + INTEGRATED HANDLE



MATERIALS

ELEGANZA: MELAMINE (DUNA)

U/C LED: INCLUDED INTERIOR STRUCTURE: WHITE DRAWERS: SMP

TOE KICK : MELAMINE (TBD) INTERIOR ACCESSORIES : SEE PLAN

HANDLES: (TBD)

DRAWERS



TRASH
BIN



SPICE DRAWER



BOTTLE/OIL
DRAWER



CONDIMENT
DRAWER

SMP (MATRIX-Italian) Total extraction and self-closing and brake. Capacity 35 kg, PLOMO interior. Anthracite side color. Rail depth 270mm and 500mm. Does NOT have Tip On or Servo Drive option. Warranty 60,000 cycles

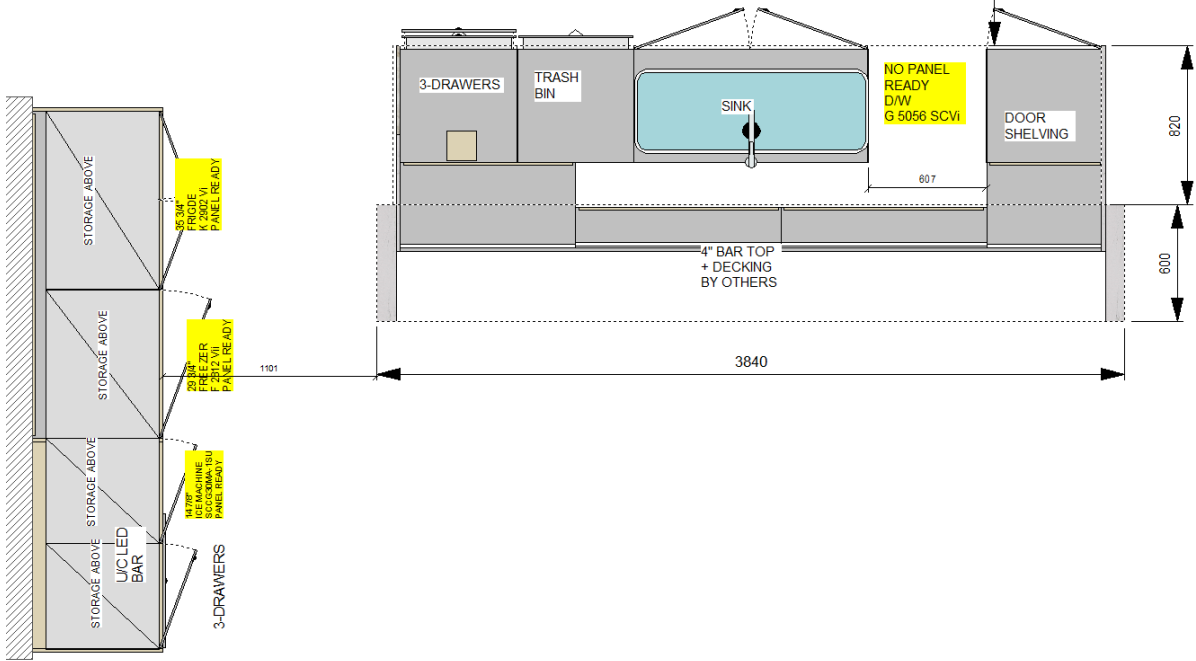
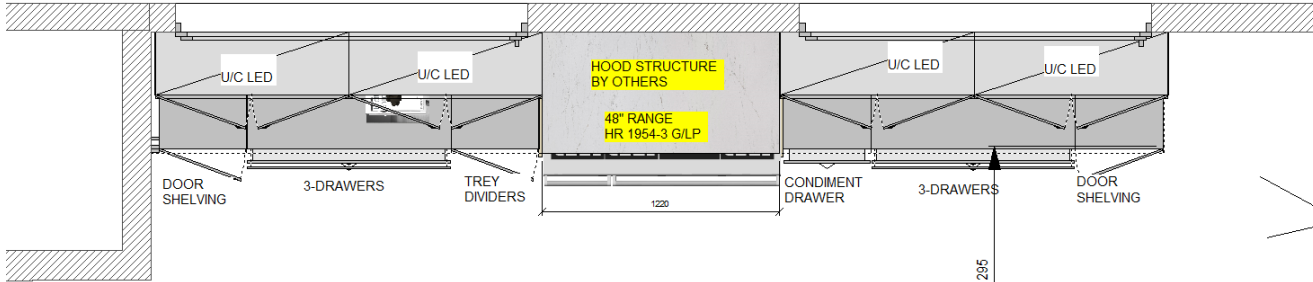
ACCESORIES

ELEGANZA: MELAMINE (DUNA)

U/C LED: INCLUDED INTERIOR STRUCTURE: WHITE DRAWERS: SMP

TOE KICK : MELAMINE (TBD) INTERIOR ACCESSORIES : SEE PLAN

HANDLES: (TBD)



U/C LED + SPOT LED INCLUDED

NOTES: SINK MAX SIZE 44" X 20"

*Countertop by others

KITCHEN

ELEGANZA: MELAMINE (DUNA)

U/C LED: YES INTERIOR STRUCTURE: WHITE DRAWERS: SMP

HANDLES: (TBD)

TOE KICK : MELAMINE (DUNA* NO RECOMMENDED FOR HIGH TRAFFIC AREAS)



*Countertop by others

KITCHEN OPT 2

ELEGANZA: MELAMINE (DUNA)

U/C LED: YES INTERIOR STRUCTURE: WHITE DRAWERS: SMP



*Countertop by others

KITCHEN OPT 2

ELEGANZA: MELAMINE (DUNA)

U/C LED: YES INTERIOR STRUCTURE: WHITE DRAWERS: SMP



*Countertop by others

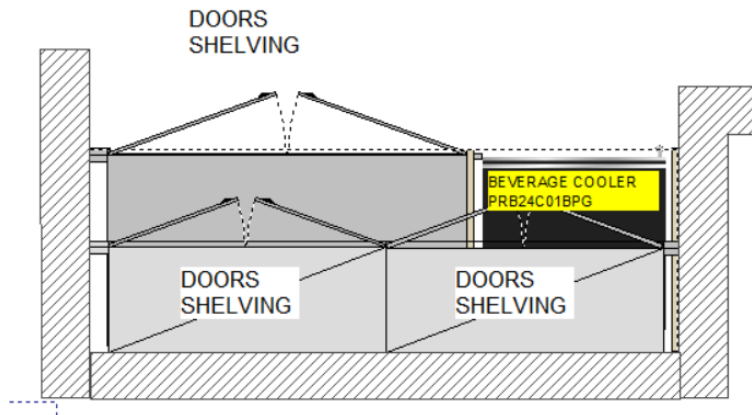
KITCHEN OPT 2

ELEGANZA: MELAMINE (DUNA)

U/C LED: YES INTERIOR STRUCTURE: WHITE DRAWERS: SMP

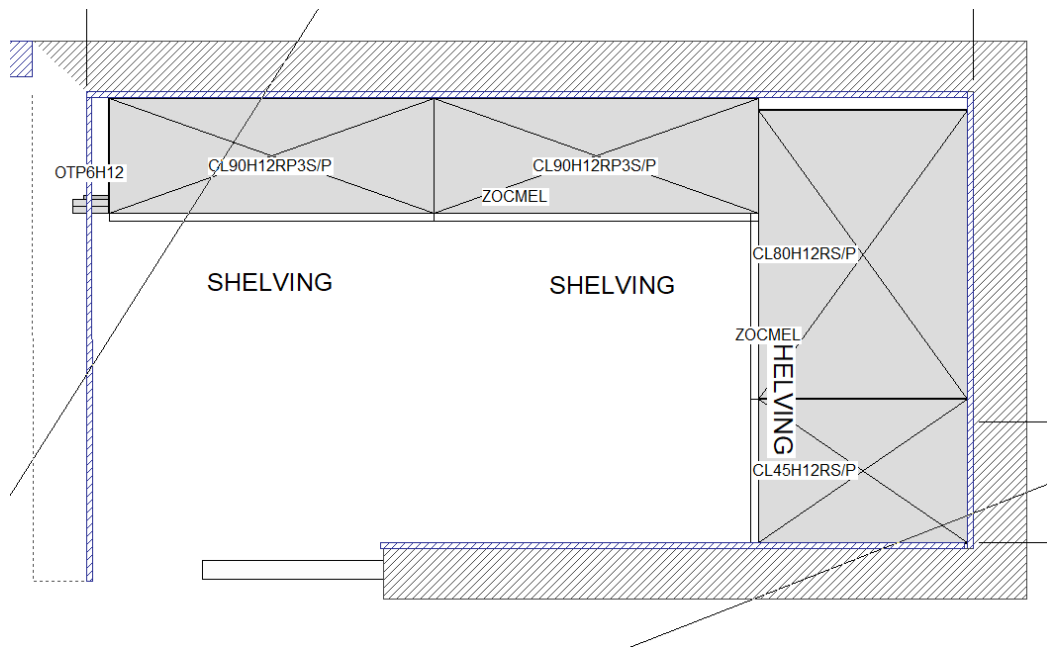
HANDLES: (TBD)

TOE KICK : MELAMINE (DUNA* NO RECOMMENDED FOR HIGH TRAFFIC AREAS)



DUNA PO

*Countertop by others



*Countertop by others

PANTRY

V+: MELAMINE (DUNA)

U/C LED:N/A INTERIOR STRUCTURE: WHITE DRAWERS: N'A

HANDLES: (TBD)

TOE KICK : MELAMINE (DUNA* NO RECOMMENDED FOR HIGH TRAFFIC AREAS)



*Countertop by others

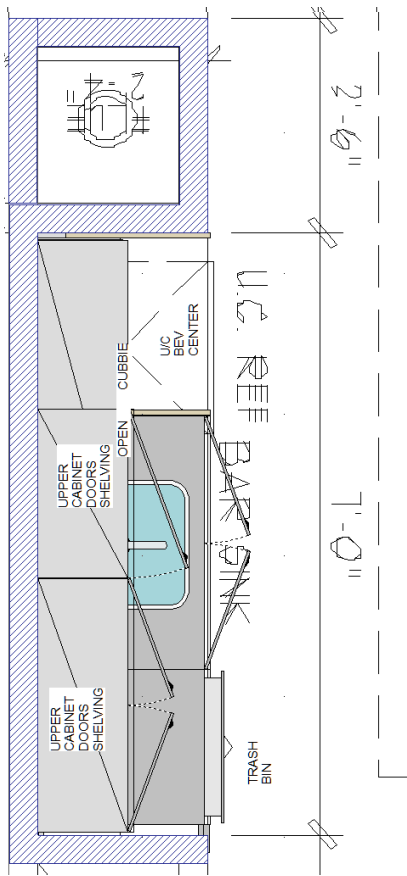
FIREPLACE

ELEGANZA: MELAMINE (DUNA)

U/C LED:N/A INTERIOR STRUCTURE: WHITE DRAWERS: SMP

TOE KICK : MELAMINE (TBD) INTERIOR ACCESSORIES : SEE PLAN

HANDLES: (TBD)



DUNA PO

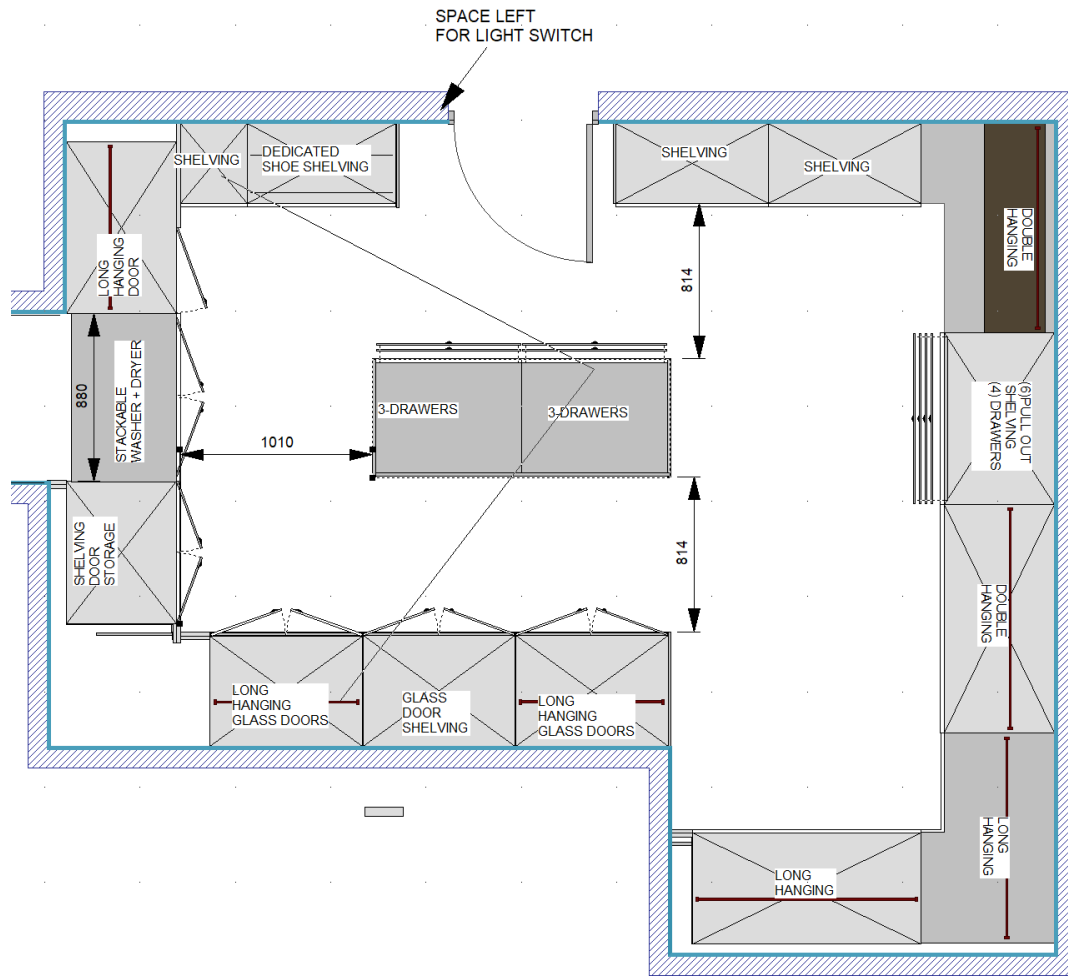
NOTES: SINK MAX
SIZE 33" X 20"

GAME ROOM

ELEGANZA: MELAMINE (DUNA)

INTERIOR STRUCTURE: WHITE DRAWERS:SMP

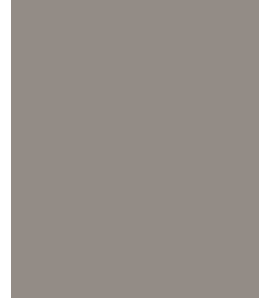
TOE KICK : MELAMINE (DUNA) HANDLES: (TBD)



BACKING
COLOR



CENIZA MT



TAUPE MT

*Countertop by others

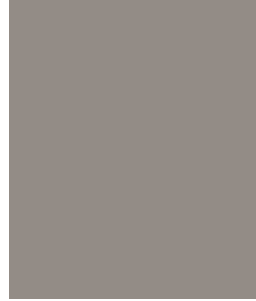
MASTER CLOSET HERS

C+ MELAMINE (CENIZA + TOUPE) LED: VERTICAL LED ON GLASS CABINETS

DRAWERS: METABOX- ¾ EXTENSION HANDLES: TBD



BACKING
COLOR



CENIZA MT

TAUPE MT

*Countertop by others

MASTER CLOSET HERS

C+ MELAMINE (CENIZA + TOUPE) LED: VERTICAL LED ON GLASS CABINETS

DRAWERS: METABOX- ¾ EXTENSION HANDLES: TBD



*Countertop by others

MASTER CLOSET HERS

C+ MELAMINE (CENIZA + TOUPE) LED: VERTICAL LED ON GLASS CABINETS

DRAWERS: METABOX- $\frac{3}{4}$ EXTENSION HANDLES: TBD

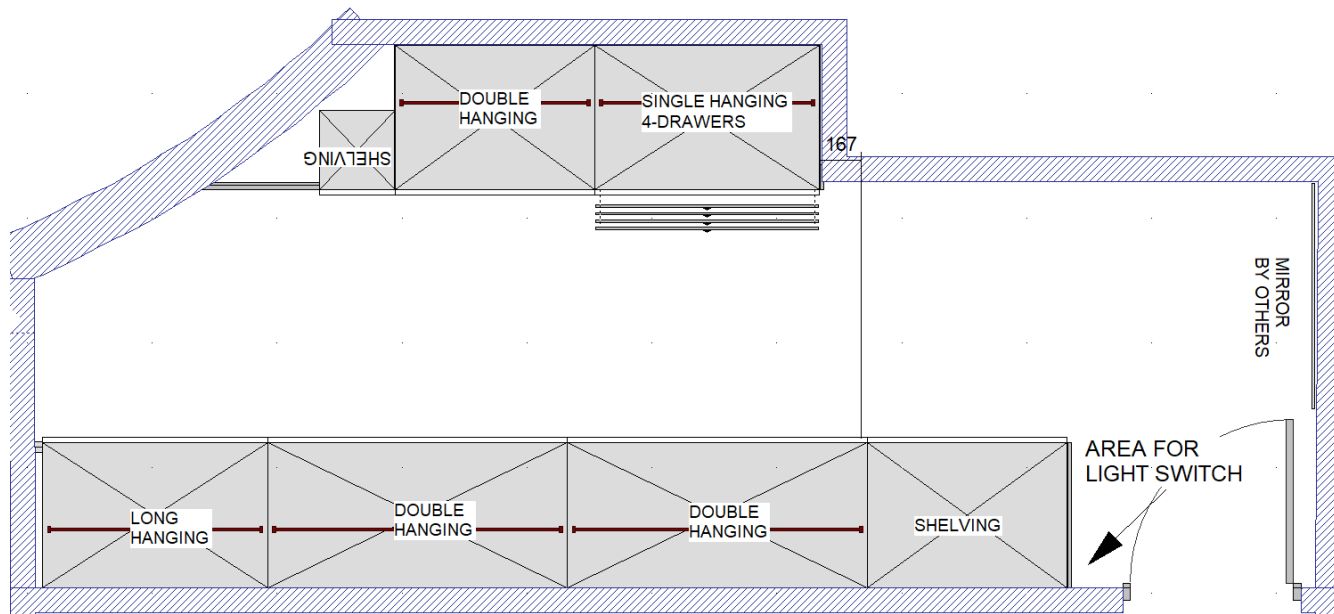


*Countertop by others

MASTER CLOSET HERS

C+ MELAMINE (CENIZA + TOUPE) LED: VERTICAL LED ON GLASS CABINETS

DRAWERS: METABOX- ¾ EXTENSION HANDLES: TBD



BACKING
COLOR



CENIZA MT



PLOMO CO

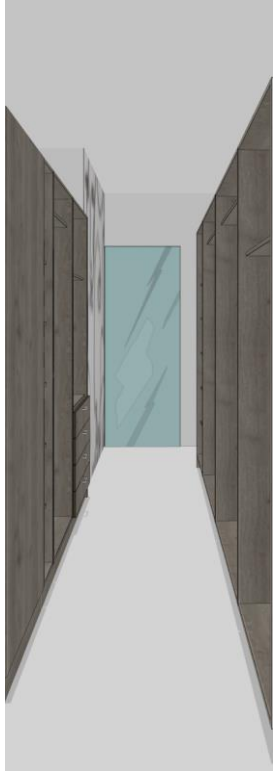
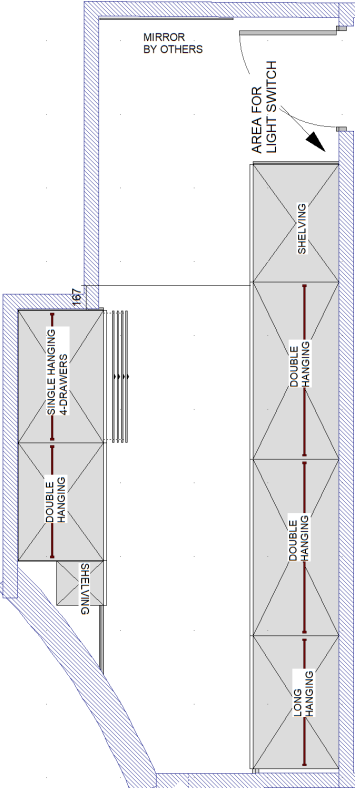


Madeval

MASTER CLOSET HIS

C+ MELAMINE (TBD) LED: NO

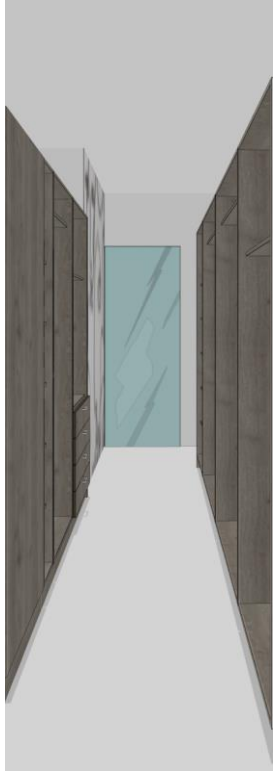
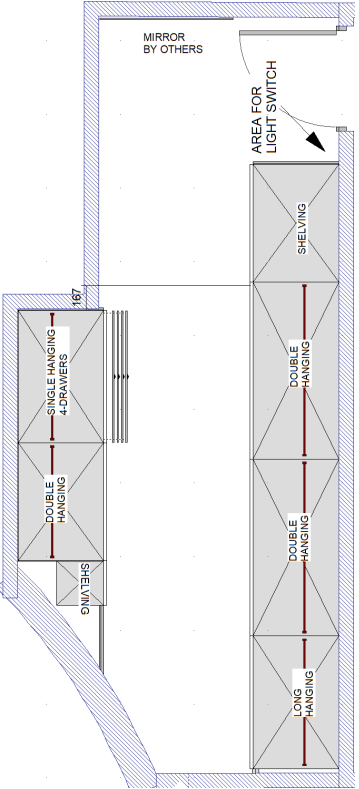
DRAWERS: METABOX- ¾ EXTENSION HANDLES: TBD



MASTER CLOSET HIS

C+ MELAMINE (TBD) LED: NO

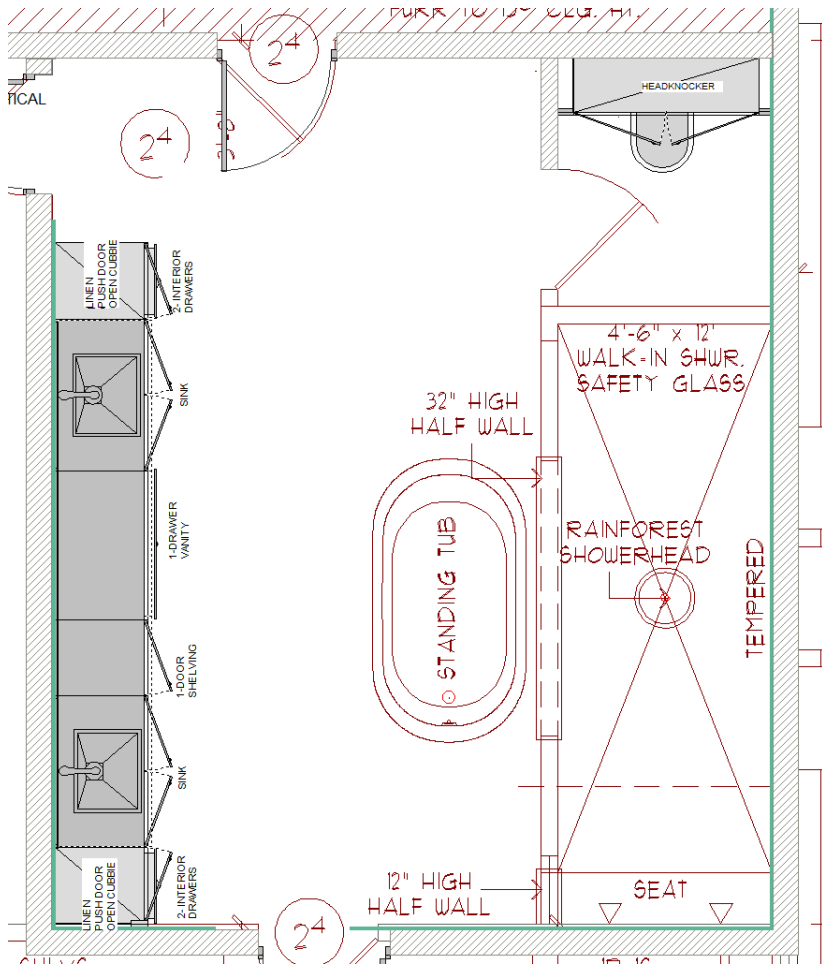
DRAWERS: METABOX- ¾ EXTENSION HANDLES: TBD



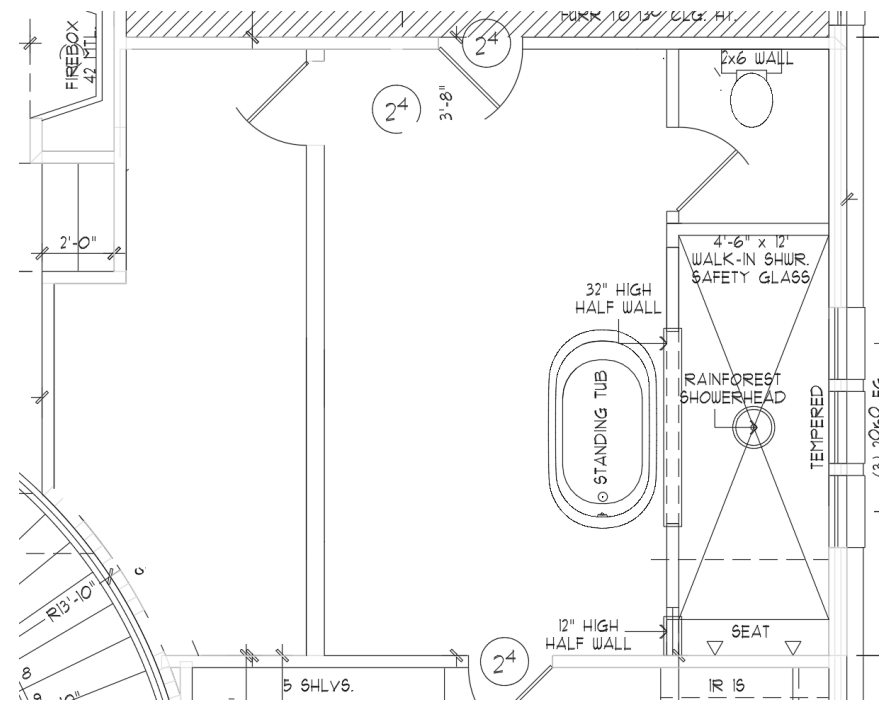
MASTER CLOSET HIS

C+ MELAMINE (TBD) LED: NO

DRAWERS: METABOX- ¾ EXTENSION HANDLES: TBD



NEW BATHROOM LAYOUT



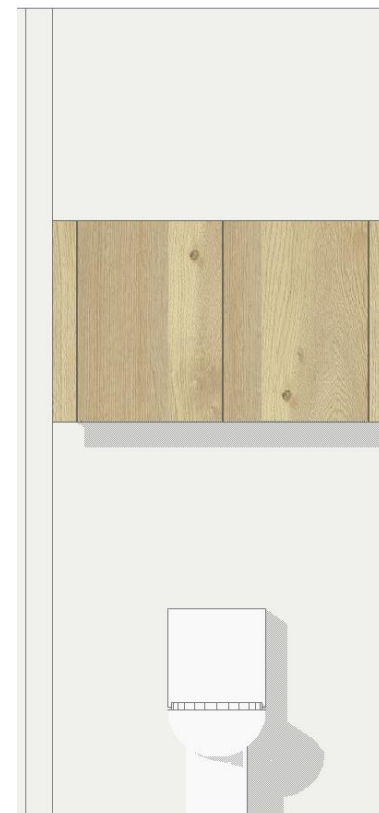
DUNA PO

NOTES: SINK MAX SIZE 32" X 16"

*Countertop by others

B+ ELEGANZA: MELAMINE (DUNA) INTERIOR STRUCTURE: WHITE DRAWERS: SMP HANDLES: (TBD)

MASTER BATH



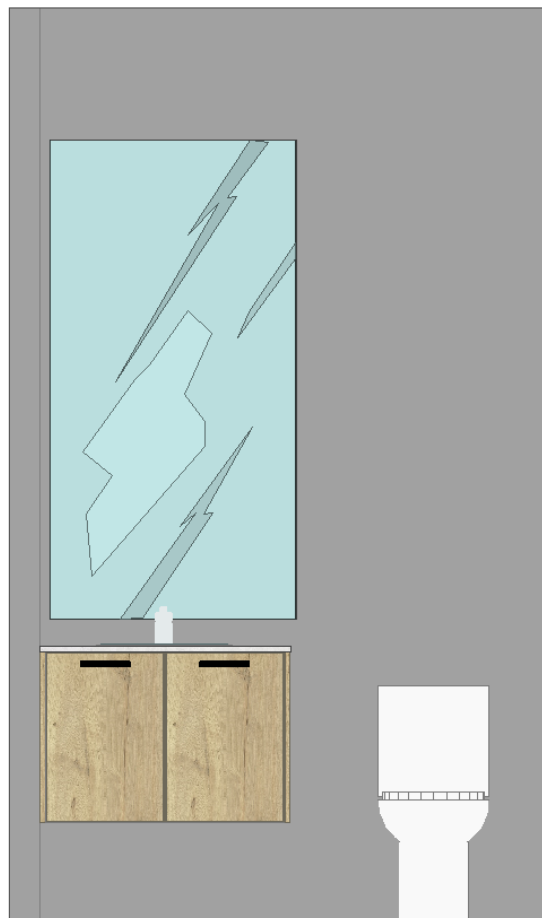
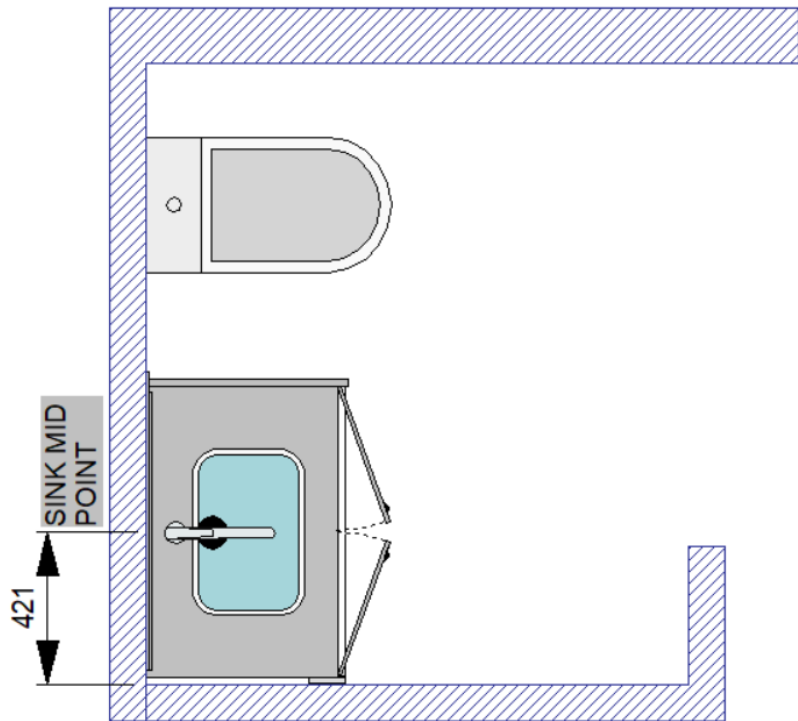
DUNA PO

NOTES: SINK MAX
SIZE 32" X 16"

MASTER BATH

*Countertop by others

B+ ELEGANZA: MELAMINE (DUNA INTERIOR STRUCTURE: WHITE DRAWERS: SMP
HANDLES: (TBD)



DUNA PO

NOTES: SINK MAX
SIZE 28" X 16"

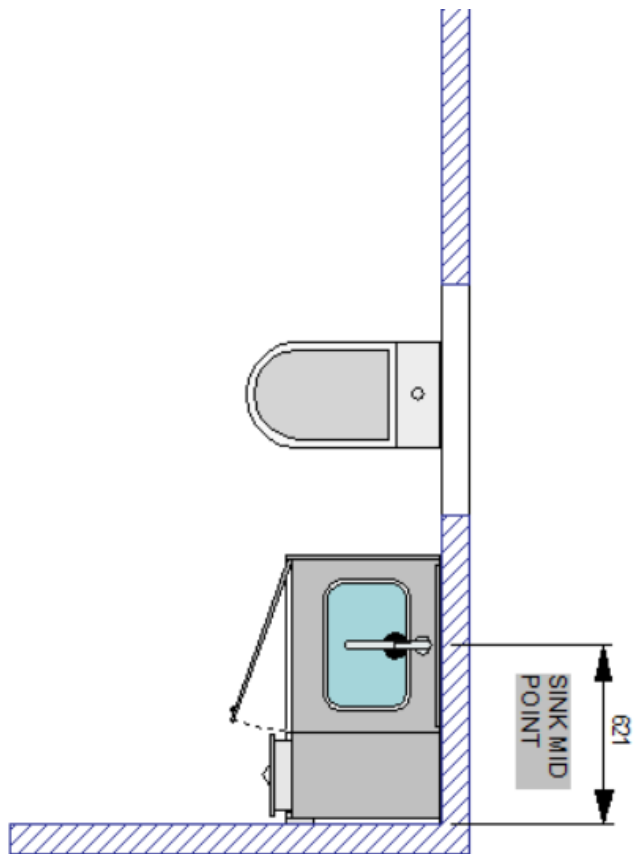
*Countertop by others
*Countertop by others

POWDER BATH

ELEGANZA: MELAMINE (DUNA)

INTERIOR STRUCTURE: WHITE DRAWERS: N/A

HANDLES: (TBD)



DUNA PO

NOTES: SINK MAX
SIZE 20" X 16"

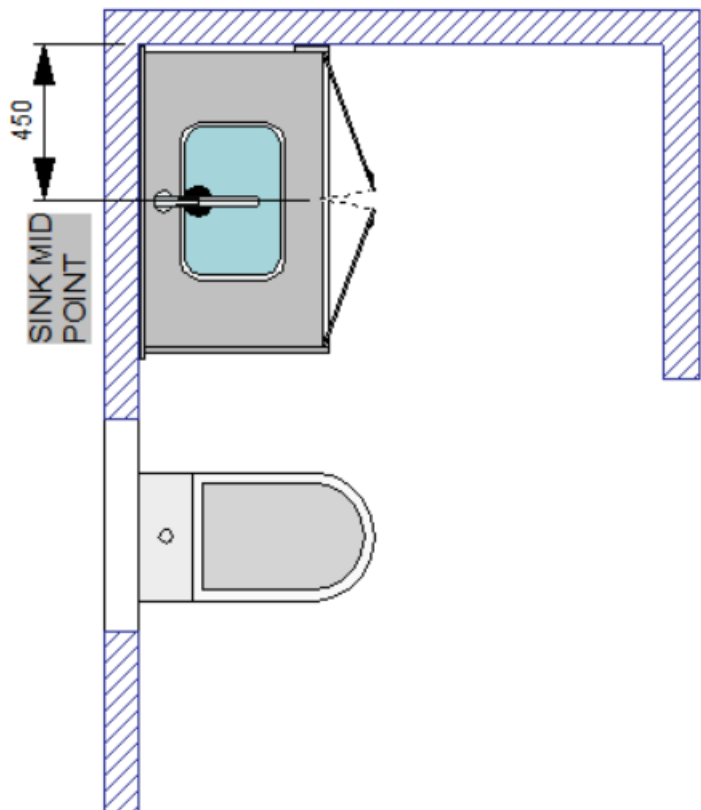
*Countertop by others

BATH 2

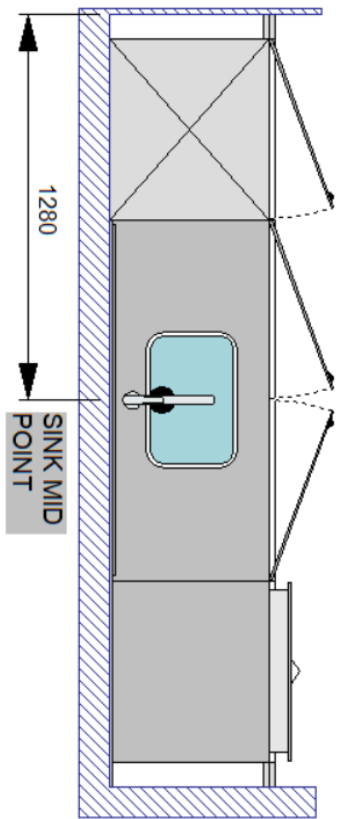
ELEGANZA: MELAMINE (DUNA)

INTERIOR STRUCTURE: WHITE DRAWERS:SMP

HANDLES: (TBD)



NOTES: SINK MAX
SIZE 28" X 16"



DUNA PO

NOTES: SINK MAX
SIZE 30" X 16"

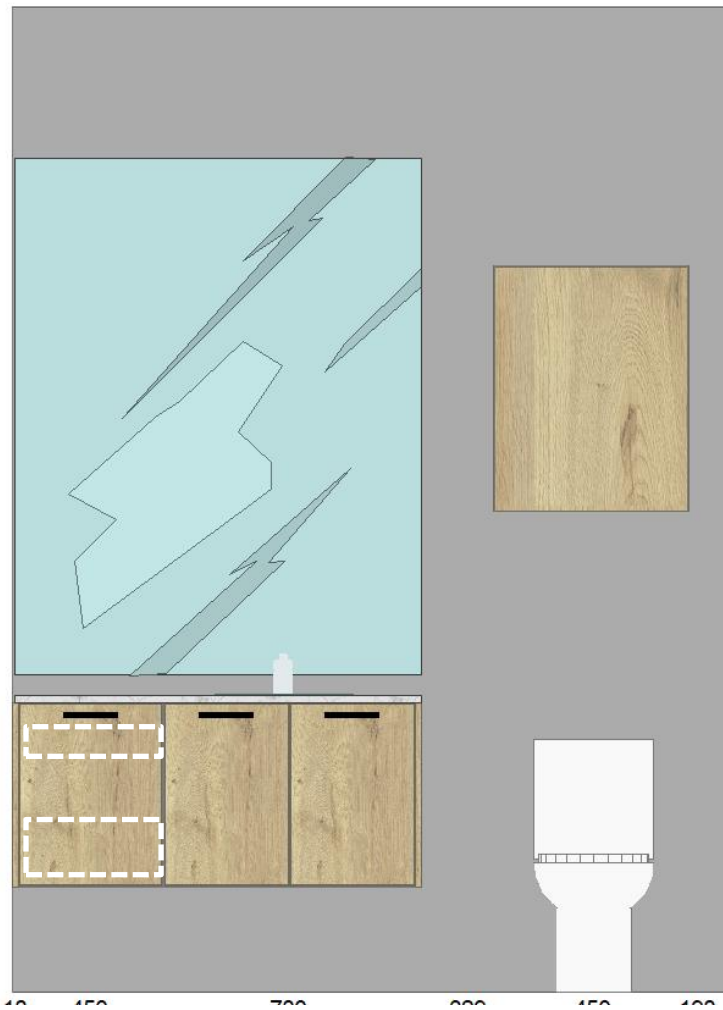
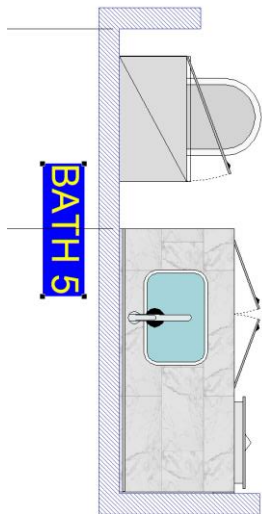
*Countertop by others

BATH 4

ELEGANZA: MELAMINE (DUNA)

INTERIOR STRUCTURE: WHITE DRAWERS: SMP

HANDLES: (TBD)



DUNA PO

NOTES: SINK MAX
SIZE 24" X 16"

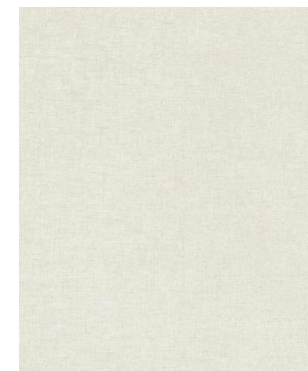
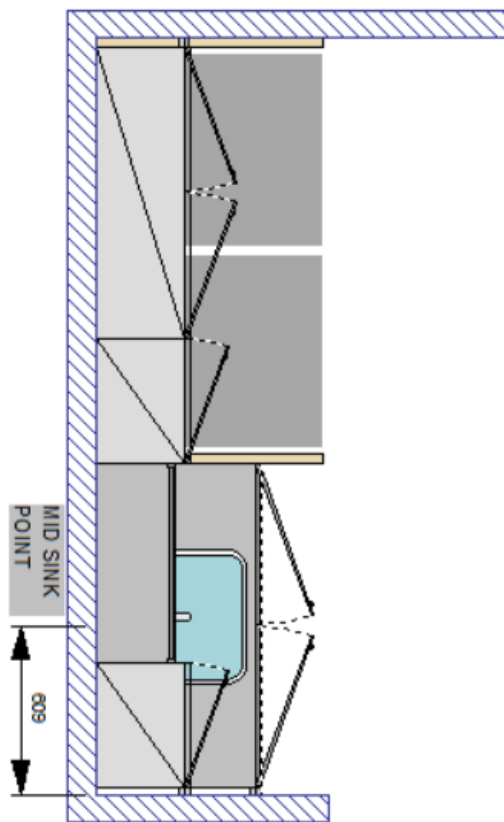
*Countertop by others

BATH 5

ELEGANZA: MELAMINE (DUNA)

INTERIOR STRUCTURE: WHITE DRAWERS: SMP

HANDLES: (TBD)



LINO CO

NOTES: SINK MAX
SIZE 33" X 20"

*Countertop by others

UTILITY ROOM

ELEGANZA: MELAMINE (DUNA)

INTERIOR STRUCTURE: WHITE DRAWERS: N/A

TOE KICK : MELAMINE (TBD) HANDLES: (TBD)