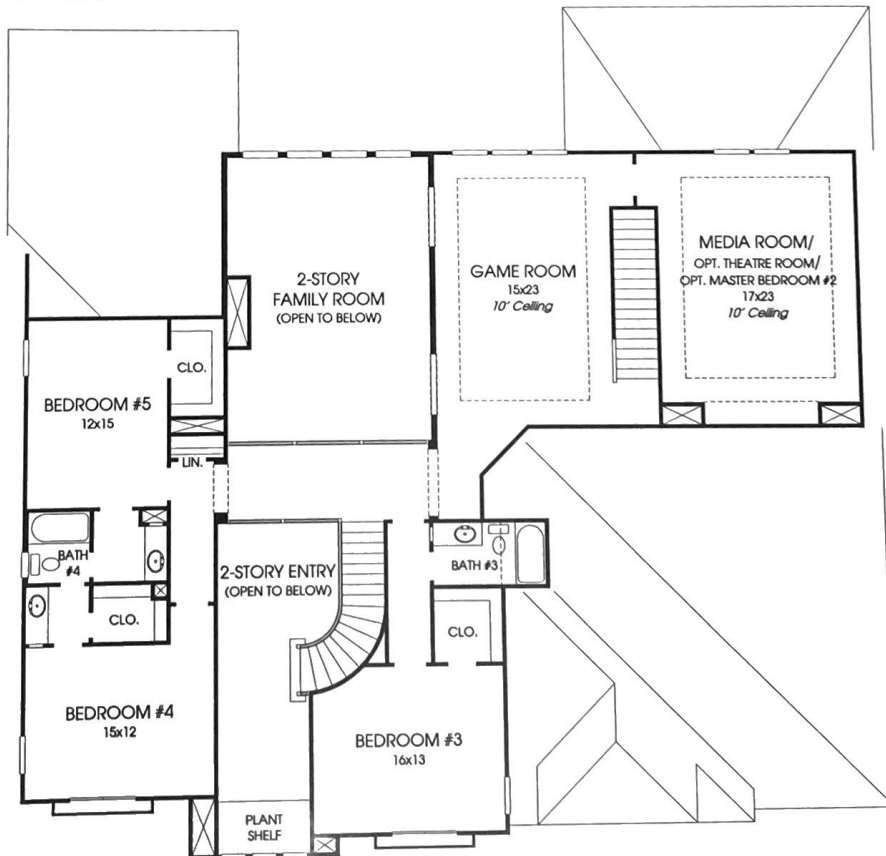
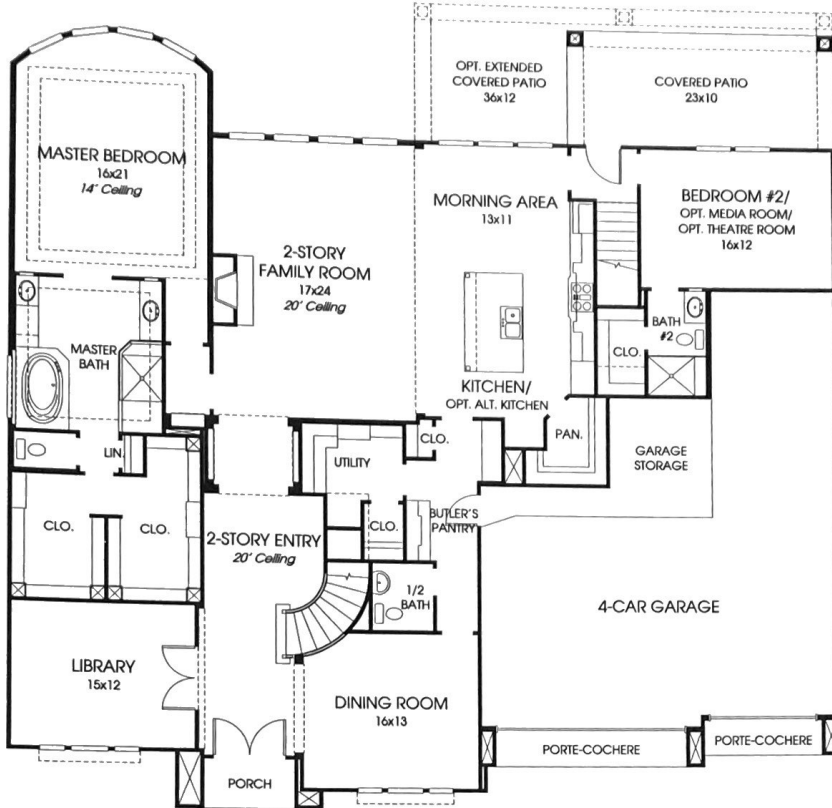


# DESIGNS

## Design 4931S

This home contains approximately 4,931 square feet.\*



This floor plan has a 10-foot plate on the first floor.

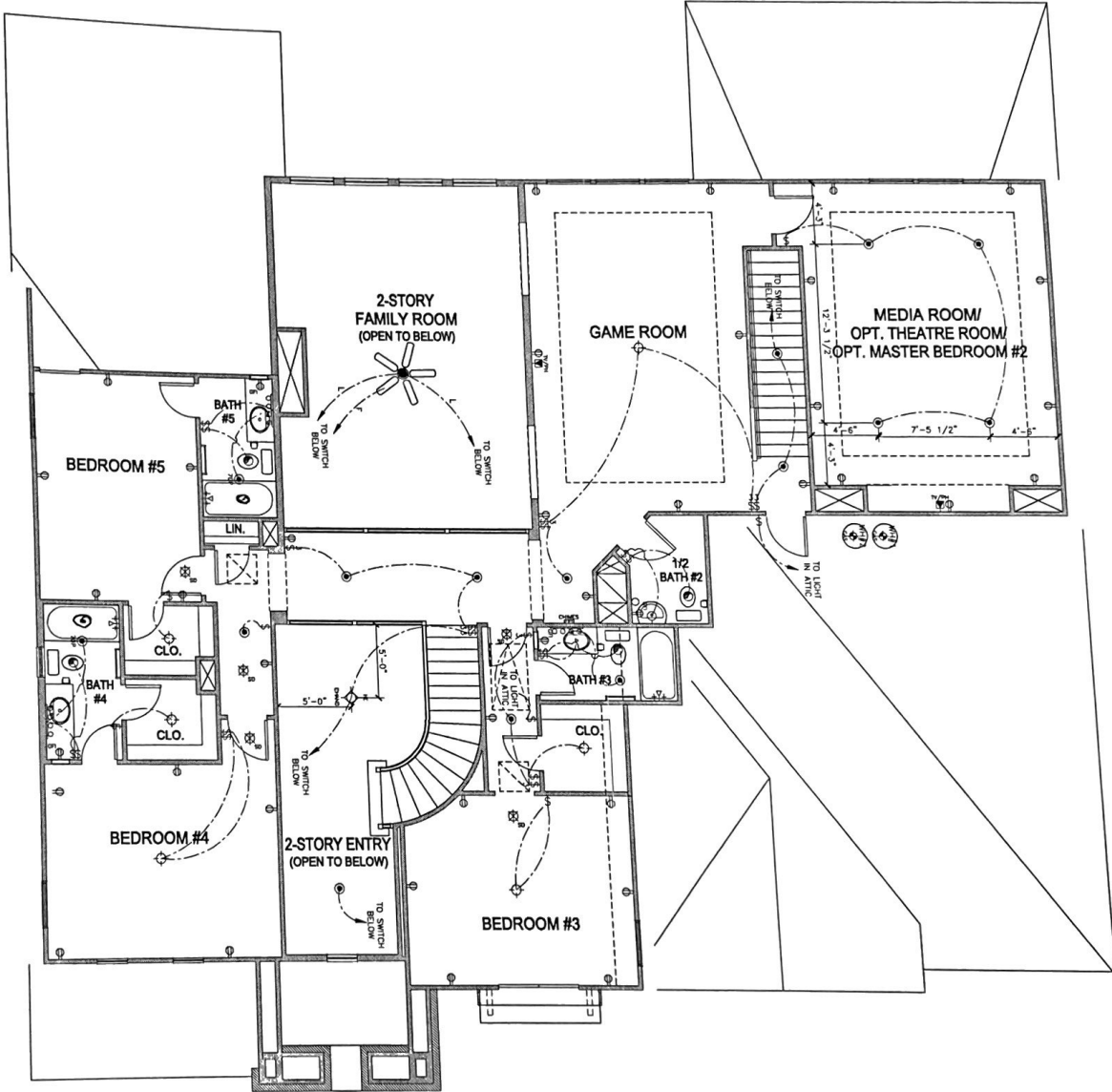
\*See Page 2 for Details and Disclaimers.  
© Perry Homes, LLC 2014

01/16/2015  
(80' CL)

# PERRY HOMES



27823  
Cold  
Springs  
Trace



*X Perry Homes* 3/20/15

C-Line.com  
SING.#62047 1-888-860-9121

PLAN NO. 4937S SHEET NO. 8.101.4 DATE: 02/17/15 DRAWN BY: [Signature] REVISIONS BY: [Signature]	<b>SECOND FLOOR</b> <b>ELECTRICAL @ E-101</b>	<b>SQUARE FOOTAGE:</b> FIRST FLOOR: _____ SECOND FLOOR: _____ THIRD FLOOR: _____ <b>TOTAL:</b> _____	<b>PERRY HOMES™</b> © - 2015 - PERRY HOMES™ P.O. BOX 34306      HOUSTON, TEXAS 77234	THIS DRAWING NOT TO BE USED FOR REGULATORY APPROVAL, CONSTRUCTION UNLESS SEAL, DATE SHOWN SIGNATURE ABOVE.	
---	--	--	--	--	--

3/17/2015 11:40 AM



**Design 4931S E-1**



**Design 4931S E-70**



**Design 4931S E-101**

This design, as originally designed and prior to any changes you make, is estimated to yield approximately the number of square feet shown on page 1. All dimensions are approximate. Square footage may vary based on as-built dimensions, configurations, plan options and/or the method of calculation. Designs are not-to-scale, and are conceptual illustrations that may differ from construction plans or completed improvements. A design may depict features not available on all homesites or in all communities. Perry Homes reserves the right to make changes in plans and specifications, and to substitute material of similar quality. Prices, terms, promotions, plans, dimensions, features, options, amenities, elevations, designs, square footages, specifications, materials, and availability of homes or communities are subject to change without notice or obligation. All obligations will be governed by a written contract. This design does not constitute a commitment to build a particular floor plan or home in any given community. Some floor plans, options, and/or elevations may not be available on certain homesites or in a particular community and may require additional charges. Please check with Perry Homes to verify current offerings in the communities you are considering. This rendering is the property of Perry Homes, LLC. Any reproduction or exhibition is strictly prohibited.  
 © Perry Homes, LLC 2014

# FEATURES

## Features Included in Firethorne, 80' Section

### Quality Assurance

- Two year Workmanship Limited Warranty, Ten year Structural Limited Warranty.
- Professionally engineered post-tension foundations inspected at three stages of the foundation process.
- Engineered structural framing inspected and certified on every home.
- Third party quality inspections performed by Burgess Construction Consultants on each home prior to sheetrock and at final stage of construction.
- Third party Home Energy Raters conduct onsite testing and inspections to verify the energy efficiency measures, as well as insulation, air tightness, and duct sealing details on every home.
- Inspections performed by an experienced construction staff at various stages of the construction process.
- All homes are engineered and inspected to meet the wind speed requirements of the International Residential Code.

### Green Building and Energy Efficiency

- Designated RESNET Energy Smart Builder with up to 30% or more improvement in energy efficiency over the HERS® reference home. For more information, please visit [www.resnet.us](http://www.resnet.us).\*
- TechShield® radiant barrier sheathing reduces radiant heat from radiating into the attic (not on detached garages).
- High-efficiency 16.0 SEER Carrier air conditioning system with environmentally-sound Puron® Refrigerant.
- ENERGY STAR® labeled GE dishwasher is more energy efficient than non-ENERGY STAR® models.
- Programmable thermostat.
- High-efficiency insulated low-E glass vinyl windows to reduce ultraviolet transmission.
- Energy saving compact fluorescent light bulbs (CFLs) installed throughout the home.
- Commodes use 1.28 gallons per flush for water conservation.
- Fresh Air Intake System for improved indoor air quality.
- Smoke and carbon monoxide detectors.
- ENERGY STAR® rated reversible ceiling fans with variable speeds in all bedrooms, family room, game room and media room (varies per plan).
- Energy efficient Rheem water heater with eco-friendly burner that reduces nitrogen oxide emissions.
- Polycel sealant around all windows, doors, pipes, wiring holes, and exterior base plates for improved energy efficiency and comfort.
- Greenguard certified R-13 batt insulation in walls and R-30 blown insulation in all flat ceilings.
- CPVC plumbing system installed for water quality and energy efficiency.
- HardieBacker Cement Board with Moldblock Technology installed in all showers.

### Exterior

- Full brick on first floor or stucco with stone accents (varies per plan).
- Fiber cement siding and soffit with a 25-year limited transferable manufacturer's warranty (varies per plan).
- Brick or tile front porch (varies per plan) with decorative coach lights.
- Lifetime limited warranty architectural shingles – nailed, not stapled.
- Insulated and pinch resistant Wayne Dalton garage doors.
- Beautifully designed front yard landscape package with fully sodded front and back yard.
- Garage door openers.
- Grand 8-foot mahogany front door with leaded glass inserts.
- Kwikset door hardware with bronze finish.
- Cedar fence and gate.
- Two-tone paint on exterior of two-story homes.

### Interior

- Granite countertops with undermount porcelain sinks in all secondary baths.

### Interior (continued)

- Textured carpet with ½" carpet pad.\*\*
- Pre-wired for alarm system.
- Blocked and pre-wired for ceiling fans in secondary bedrooms and game room (varies per plan).
- Second story subflooring, ¾" tongue and groove, glued and screw shank nailed for smoother floors.
- Structured wiring package with CAT 5 and RG6 wiring.
- Phone and cable provided in all secondary bedrooms.
- Pre-wired for surround sound in media room (varies per plan).
- Enlarged crown moulding in entry, extended entry, dining room, living room, and library (varies per plan).
- 4 ¼" crown moulding in family room, kitchen/morning area, master bedroom, master bath, media room, and game room (varies per plan).
- 8-foot raised two-panel interior doors on 1-story plans and 1<sup>st</sup> floor of 2-story plans.
- Remote controlled direct vent fireplace with gas logs, cast stone mantel and surround.
- Powder room has granite countertops with undermount porcelain sink, bronze Delta faucet, and mirror with decorative frame (varies per plan).
- Medicine cabinet in secondary baths.
- Utility room with cabinet, clothes rod, and shelf.
- Gas line in utility room.
- Bronze lever door handles.
- Ceramic tile flooring in extended entry, family room, powder room, utility room, and secondary baths (varies per plan).
- Bronze lever door handles.
- Modern rocker light switches.
- Elegant staircase with stained wood starter step and wrought iron balusters.
- Bronze bath hardware in master bath and powder room (varies per plan).
- Wood floors in the dining room and living room or library.

### Kitchen

- Granite countertops with natural stone or glass tile backsplash.
- Distinctive 42-inch cabinets with decorative corners, full extension drawer slides, raised panel doors, and door hardware.
- GE 30" double ovens with stainless steel finish.
- GE built-in microwave with stainless steel finish.
- GE ENERGY STAR® labeled dishwasher with stainless steel finish.
- GE 36" 5-burner gas cooktop with stainless steel finish.
- Ceramic tile flooring in kitchen/morning area.
- Undermount stainless steel sink with pull-down Delta faucet.
- Recessed can lighting.
- Undercabinet lighting.

### Master Bath

- Granite countertops with undermount porcelain sinks.
- Built-in garden tub with ceramic tile surround.
- Separate glass enclosed shower with ceramic tile surround and floor.
- Ceramic tile flooring in master bath and commode room.
- Bronze Delta faucets.
- Bronze Delta Roman tub faucet on garden tub.
- Medicine cabinet in master bath.
- Master bath mirror with decorative frame.

### Design Center

- Six (6) hours of complimentary design service to complete your selections.



\*\*Available on homes started after July 14, 2014.

Builder reserves the right to make changes in the plans and specifications, and to substitute material of similar quality.

\*Energy use and costs for all Perry Homes will vary based on a variety of factors such as home type, plan options, features, usage, orientation, site, utility rates, climate and operation of the home. Please contact Perry Homes for more details.

# PERRY HOMES

September 17, 2014

(CL-4)(543/400,410)(80)