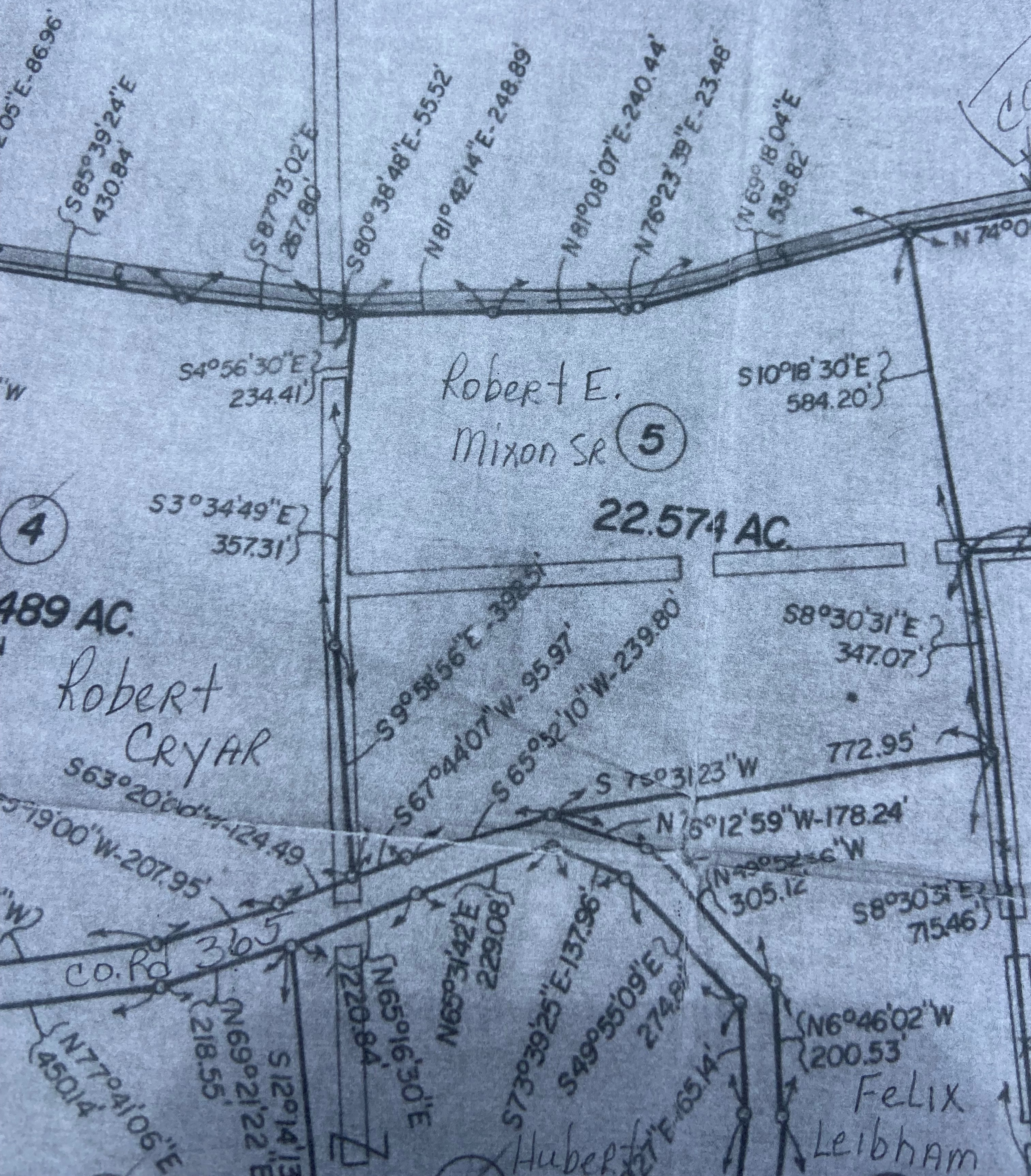


A. PENN
A-701

VS



Robert E.
Mixon Sr (5)

22.574 AC

(4)
489 AC.

Robert
Cryar

Felix
Leibham

Hubert

S4°56'30"E
234.41'

S10°18'30"E
584.20'

S3°34'49"E
357.31'

S8°30'31"E
347.07'

S9°58'56"E-392.31'
S67°44'07"W-95.97'
S65°52'10"W-239.80'

S75°31'23"W
772.95'

N16°12'59"W-178.24'

N49°52'16"W
305.12'

S8°30'31"E
715.46'

S63°20'00"W-124.49'
S19°00'W-207.95'

Co. Rd

N69°21'22"E
218.55'

N65°16'30"E
220.84'

N65°31'42"E
229.08'

S73°39'25"E-137.96'
S49°55'09"E-274.81'

N6°46'02"W
200.53'

S85°39'24"E
430.84'

S87°13'02"E
267.80'

S80°38'48"E-55.52'
N81°42'14"E-248.89'

N81°08'07"E-240.44'
N76°23'39"E-23.48'

N69°18'04"E
538.82'

N74°0'