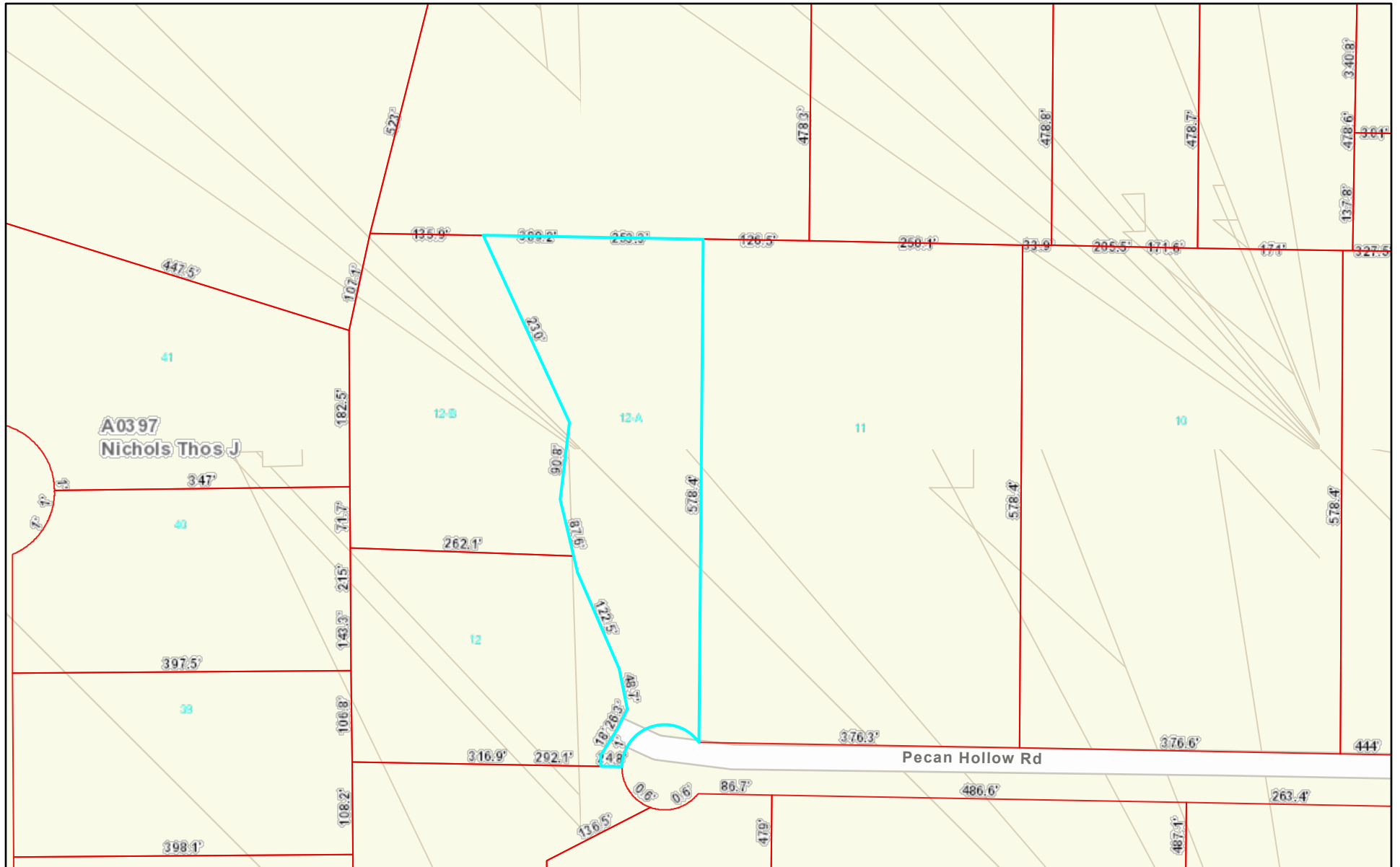


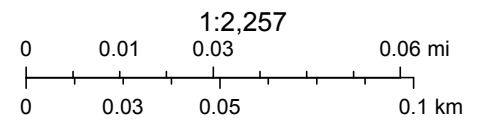


# Montgomery CAD Web Map



4/7/2022, 10:33:23 AM

-  Abstracts
-  Parcels



Sources: Esri, HERE, Garmin, FAO, NOAA, USGS, © OpenStreetMap contributors, and the GIS User Community

Montgomery County Appraisal District, BIS Consulting -  
Disclaimer: This product is for informational purposes only and has not been prepared for or be suitable for legal, engineering, or surveying purposes. It does not represent an on-the-ground survey and represents only the approximate relative location of boundaries.