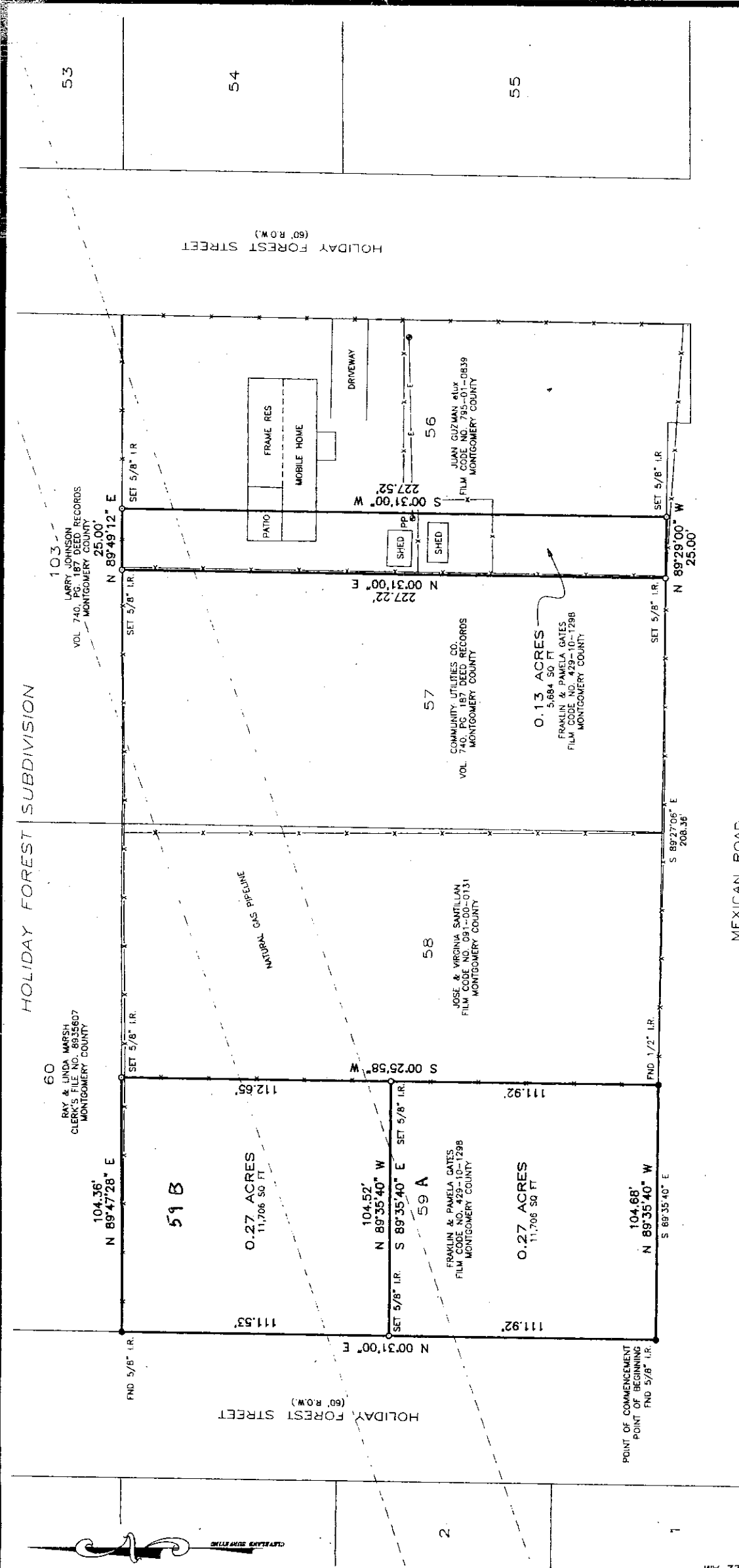
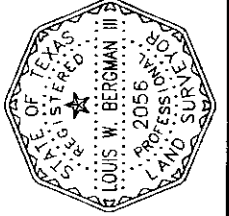


HOLIDAY FOREST SUBDIVISION



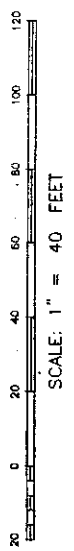
PLAT OF
LOT NO. 59 & THE
WEST 25' OF LOT NO. 56
 OF THE HOLIDAY FOREST SUBDIVISION
 SITUATED IN THE IRA MILLIMAN
 SURVEY, ABSTRACT NO. 340,
 MONTGOMERY COUNTY, TEXAS



I HEREBY CERTIFY THAT THIS PLAT IS TRUE
 AND CORRECT TO THE BEST OF MY KNOWLEDGE,
 AND BELIEF, AS SURVEYED ON THE GROUND,
 DECEMBER 15, 2003
Louis W. Bergman III
 LOUIS W. BERGMAN III
 R.P.L.S. NO. 20556

REFER TO SEPARATE LEGAL DESCRIPTION FOR ADDITIONAL NARRATIVE
 BASIS OF BEARING: WEST LINE LOT 59

CLEVELAND SURVEYING CO.
 700 South Washington Ave., Suite B
 Cleveland, TX 77327
 www.clevelandsurveying.com
 (281) 592-6395 Fax (281) 592-7138
 Copyright © 2003 All Rights Reserved



Completion Date: 12/16/03 File Name: 03-0422.DWG
 Scale: 1" = 40' Surveyed by: RB/EE
 Drawn by: WB Checked by: LB