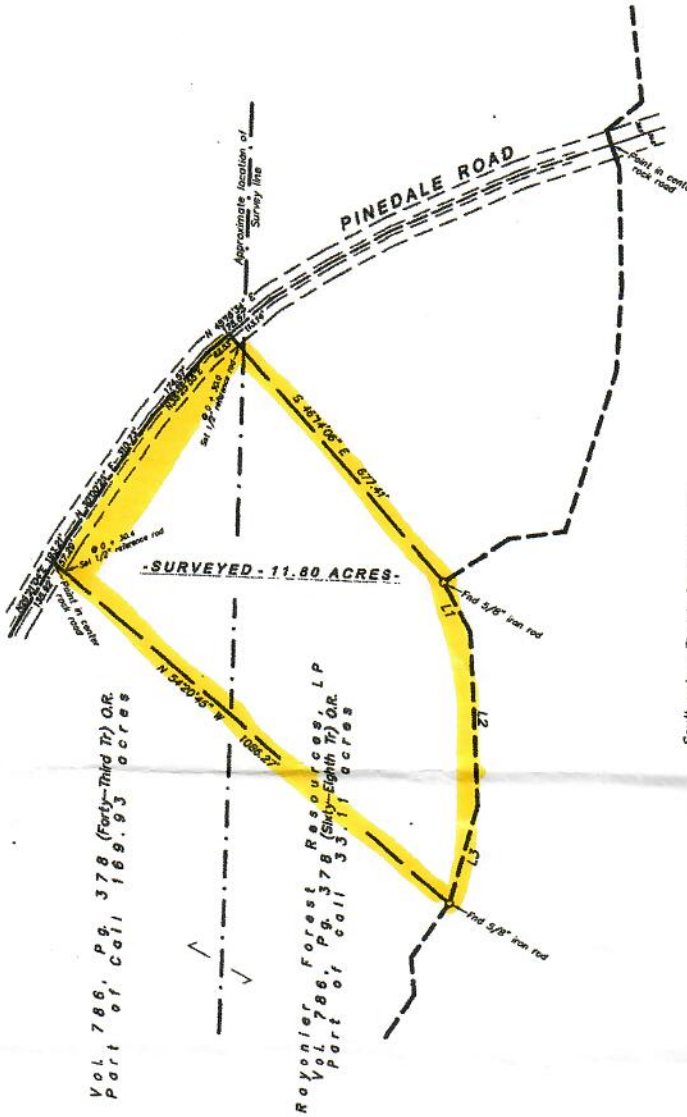


LINE	BEARING	DISTANCE
L1	S 33°20'03" E	117.55'
L2	S 07°07'23" E	364.91'
L3	S 11°21'19" W	214.79'

LEWIS DUEL SURVEY, A-173



ELEAZOR F. HEARD SURVEY  
A - 259

Southwestern Electric Power Company  
Vol. 424, Pg. 120 (Tr 259-1) D.R. Call 287.46 acres

Vol. 786, Pg. 378 (Forty-Third Tr) O.R.  
Part of Call 169.93 acres

Rayonier Forest Resources, LP  
Vol. 786, Pg. 378 (Sixty-Eighth Tr) O.R.  
Part of call 33.11 acres

SURVEYED - 11.80 ACRES -

NOTES:

1. Bearings based on deed calls of Southwestern Electric Power Co. 255.62 acre tract (Vol. 424, Pg. 120 D.R.);
2. Found 5/8" iron rods at all property corners, unless otherwise noted.



PLAT OF SURVEY OF

11.80 ACRES OUT OF  
RAYONIER FOREST RESOURCES, LP  
33.11 ACRE and 169.93 ACRE TRACTS

In the LEWIS DUEL SURVEY, A-173  
and ELEAZOR F. HEARD SURVEY, A-259  
Walker County, Texas

November, 2010


Scale: 1" = 300 Feet

FULLER and ASSOCIATES  
Huntsville, Texas

FILE: RAYONIER-Div 169.93ac-EastSide Pinedale-11.80ac \2009\

I, JOE A. FULLER, Registered Professional Land Surveyor,  
do hereby certify that this plat represents a survey made  
under my supervision and that all monuments and  
apparent easements are shown hereon.

Signed

  
JOE A. FULLER  
R.P.L.S. No. 4066  
October 29, 2009

