

DESIGNS

Plan 2509W

This home contains approximately 2,509 square feet and includes four bedrooms and two baths.

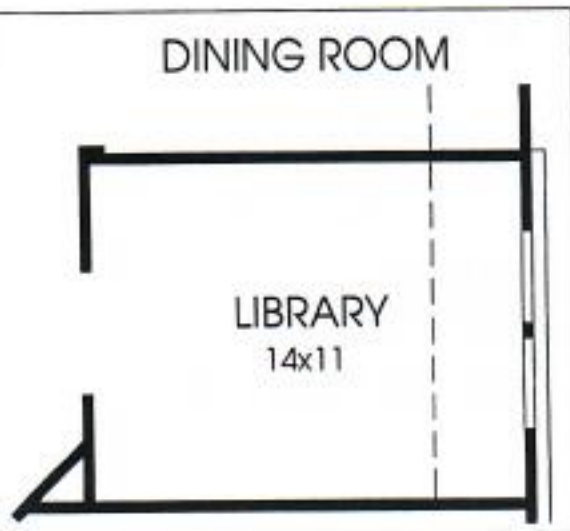
OPTION 1

This floorplan has the option for a fireplace in the family room.



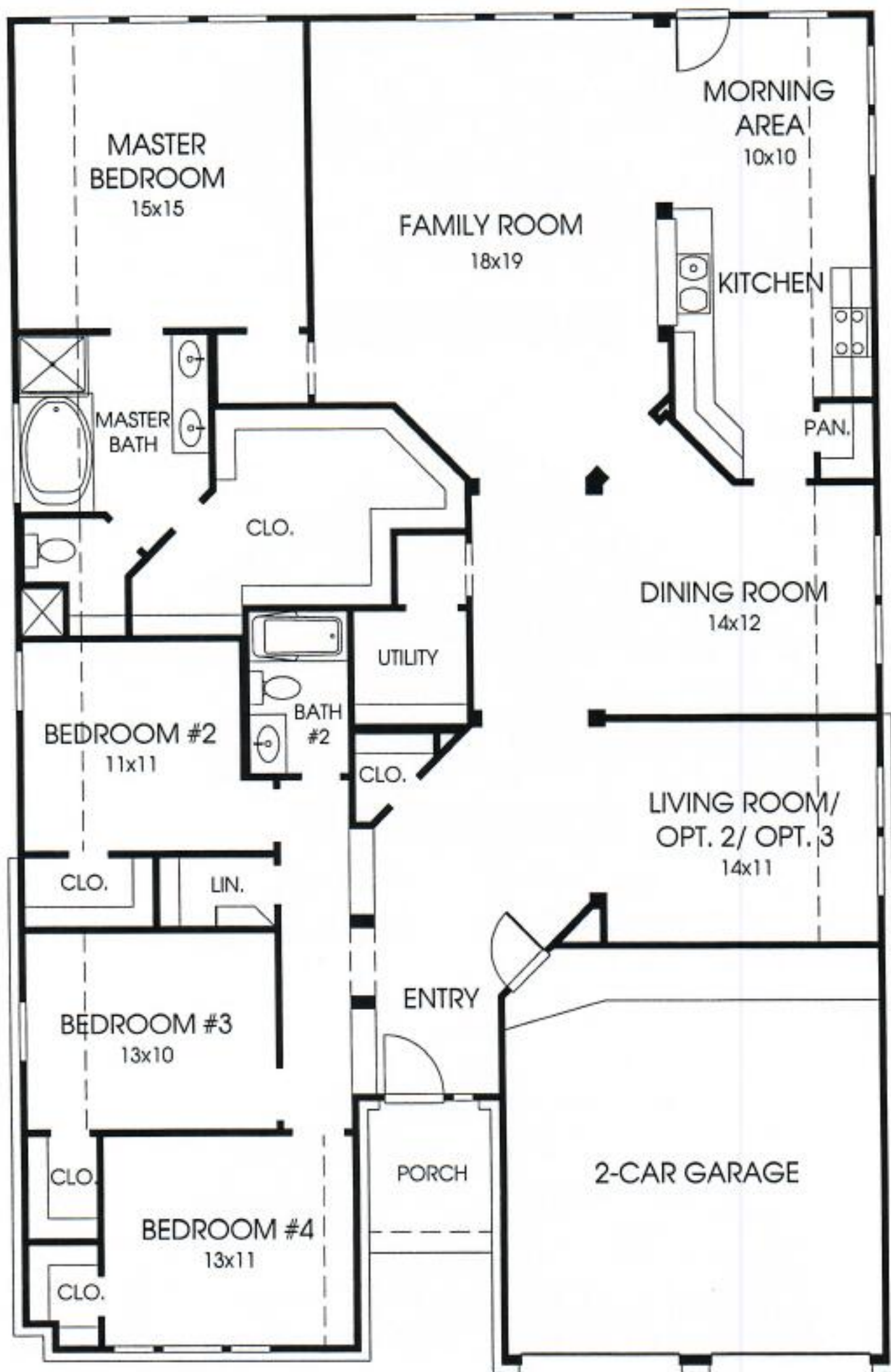
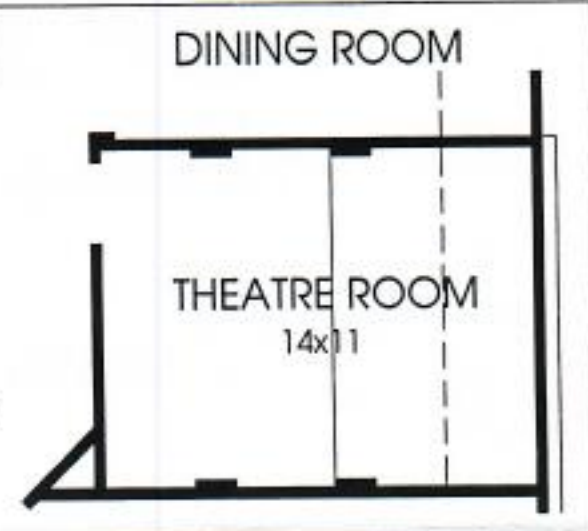
OPTION 2

This floorplan has the option for a library in lieu of the living room.



OPTION 3

This floorplan has the option for an theatre room in lieu of the living room.



Not included: inside keyed deadbolt locks, refrigerators, furnishings, drapery, plants, decorator items and all other personal property being used in model homes. Builder reserves the right to make changes in the plans and specifications, and to substitute material of similar quality. Room dimensions indicate approximate inside area measurements.
JANUARY 2007 © 2007 Perry Homes (CL&CL-W)

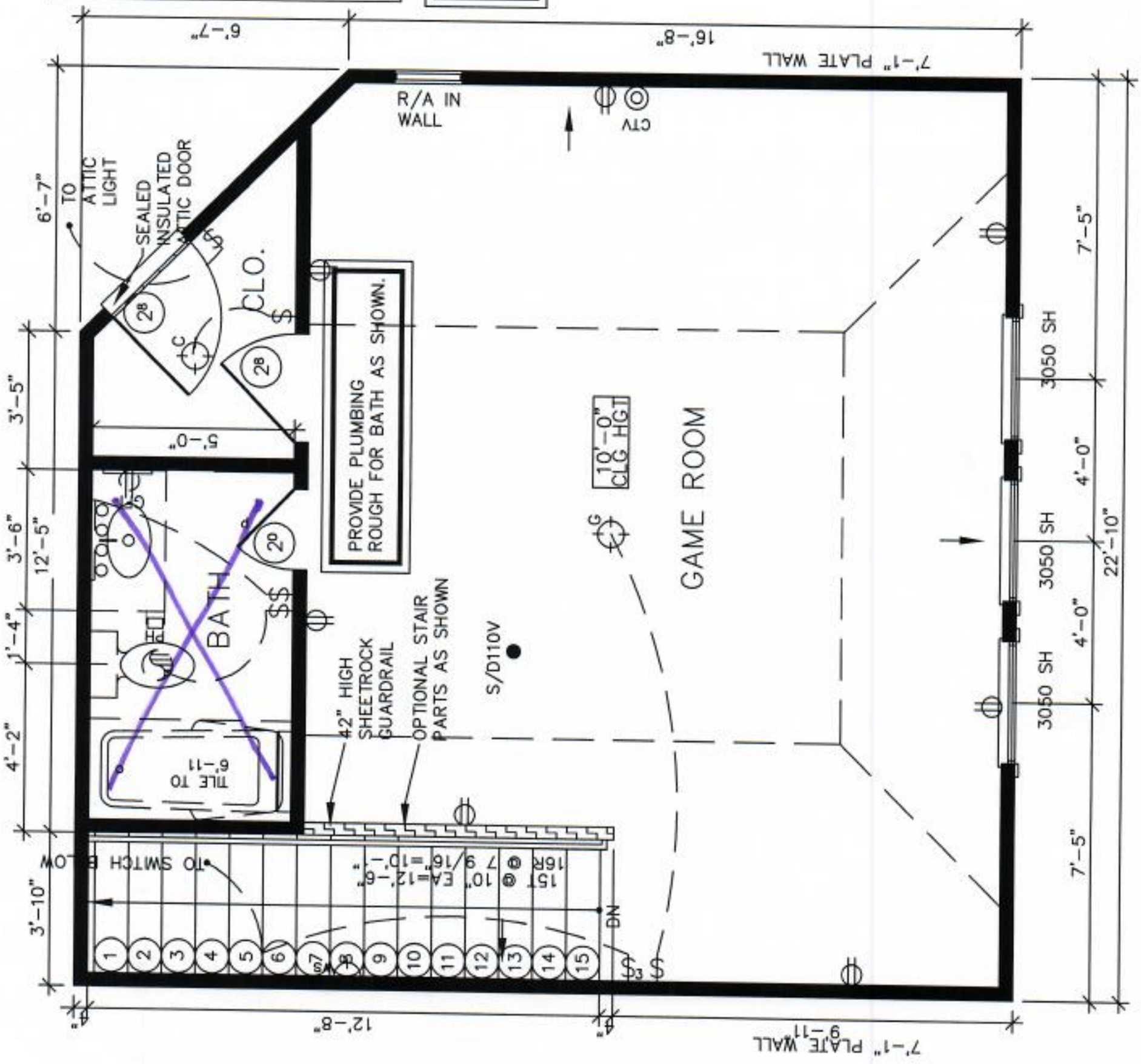
Note: The options shown on this brochure are available at an additional cost.

PERRY HOMES





NOTE: DELETE STAIR #3 WITH ROOM



B SECOND FLOOR PLAN @ GAMEROOM OPTION 2509W
 Scale: 1/4" = 1'-0"