



CLASSIC SERIES

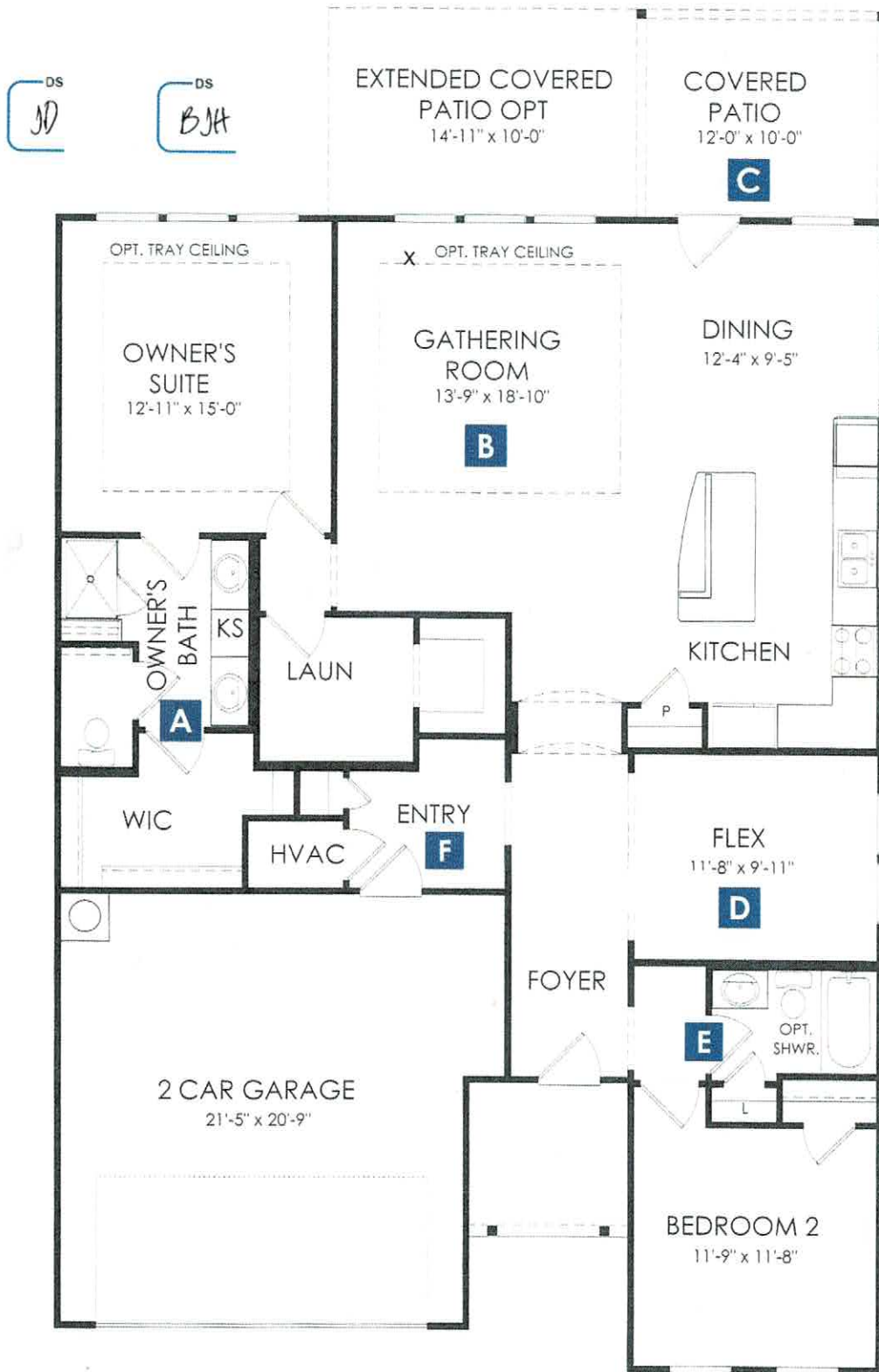
ABBEYVILLE



2-3 bedrooms | 2 baths | 1,710 square feet

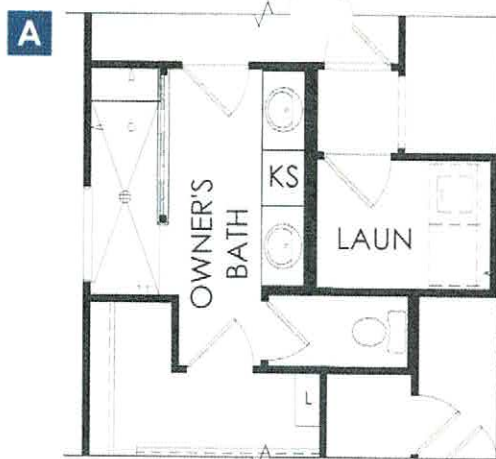


Abbeyville FLOOR PLAN





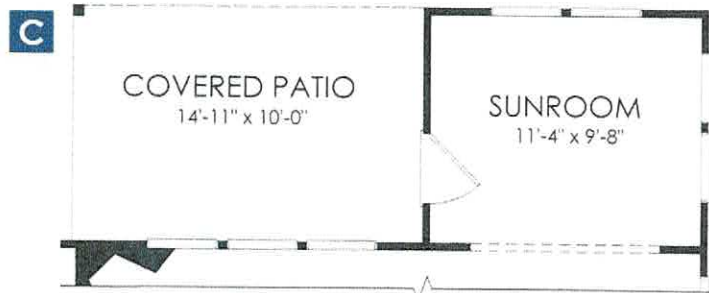
**Owner's Bath
Opt. 1**



**Owner's Bath
Opt. 2**



**Fireplace Opt. @
Gathering Room**



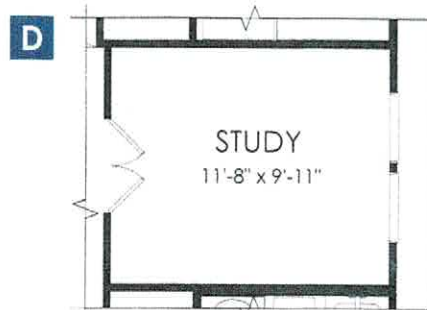
**Sunroom & Covered
Patio Opt.**

DS
JD

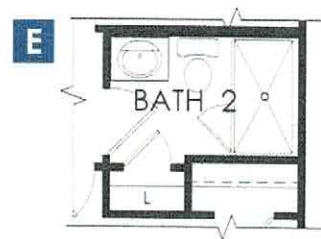
DS
BJH



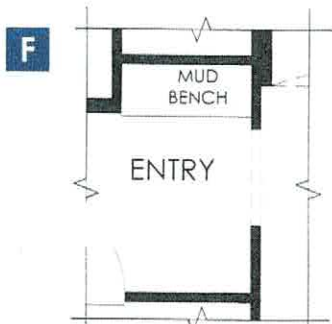
**Bedroom 3 Opt.
ILO Flex**



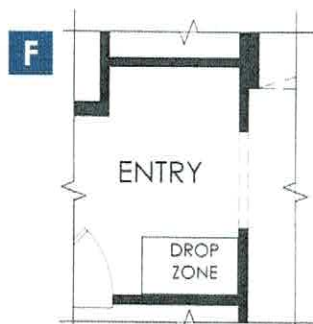
**Study Opt.
ILO Flex**



**Shower Opt.
@ Bath 2**



**Mud Bench
@ Entry**



**Drop Zone Opt.
@ Entry**

CLASSIC SERIES STANDARD FEATURES

Del Webb
UNION PARK™

Interior Design Features

- Emser® 13" Ceramic Tile in Foyer, Utility, Kitchen and Baths
- Shaw® Carpet with 3/8" Pad
- Sherwin-Williams® Paint Throughout Home
- Kichler® Lighting Package
- Rocker Switches
- 2 Panel Smooth Surface Arch Top Interior Doors
- Privacy Locks on Owner's Suite and Bathroom Doors
- Schlage® Levered Interior Door Handles—Nickel/Bronze
- Elegant Rounded Corners 1/2" radius
- Spacious 9' Ceilings

Deluxe Kitchen Features

- Birch Cabinets with Flat Panel Doors
- 36" Upper Cabinets with Concealed Hinges and Elegant Crown Molding
- Granite Countertops—3 cm
- Recessed Can Lighting
- Stainless Steel Under Mount Sink
- Moen® Distinctive Single Handle Faucet
- High Capacity Food Disposal
- Whirlpool® Dishwasher in Stainless
- Whirlpool® 30" Freestanding Gas Range with Oven in Stainless
- Whirlpool® Microwave with Vent-to-Exterior Exhaust in Stainless
- Emser® 13" Tile Backsplash

Luxurious Bathrooms

- Birch Cabinets with Flat Panel Doors
- 36" Vanity Cabinets with Concealed Hinges in Owner's Bath
- Silestone Quartz Vanity Top with Undermount Bowl(s)
- Moen® Fixtures
- Elongated Comfort Height Toilets
- Moen® Accessories
- Kichler® Wall-Mounted Light Fixtures
- Shower with Tile Surround and Clear Glass Door at Owner's Bath
- Tub/Shower in Secondary Baths
- Exhaust Fan

Quality Construction

- Professionally Engineered Post Tension Foundations
- Garage Sheetrock Painted and Taped
- Home Team Pest Defense® "TAEXX System" with Termite Pre-Treatment
- Engineered Roof Trusses
- Finger-Jointed Wall Studs

Safety & Security

- Smoke Detectors (per code)
- Carbon Monoxide Detectors (per code)
- Deadbolt Lock on Front and Rear-Entry Doors
- GFI Plugs in All Baths, Kitchen, Garage and Exterior Outlets

Exterior Design Features

- LP® Carriage Style Garage Door
- Acme® Brick—4 Sides Exterior
- Insulated Arched 2-Panel Stained Fiberglass Front Door with V Grooves
- Professional Landscape Package in Front Yard
- Full Sod in Front, Back and Side Yards
- Full Irrigation System with ET System
- Front and Back Door Lighting
- Full Gutters with Downspouts
- Front and Back GFI Electrical Outlets
- Garage Door Opener with Two Remotes
- Two Garage Coach Lights
- Brushed Concrete Driveway and Walkway
- 2 Exterior Hose Bibs
- Cast Stone Address Block
- Covered Patio
- Dimensional 30-year Fiberglass Composition Shingle
- Solid Core Door from Garage to Home

Energy Savings and Comfort

- Lennox® 16 SEER-rated HVAC System
- R-38 Insulation over Air Conditioned Areas
- R-13 Insulation in Exterior Walls
- Low E Double Paned Vinyl Windows
- Radiant Barrier Roof Sheathing
- Honeywell® Programmable Thermostat
- 90% LED Lighting

Del Webb Smart Home Features

- Smart Home Hub: Structured Wiring Panel Box Centrally Located to Serve as the Hub for Your Home's Smart Network
- Upgraded CAT6 Wiring Infrastructure Throughout Home to Enhance Live Streaming and Internet Speed
 - CAT6/RG-6 outlets in Gathering Room and Owner's Suite (Additional Standard Locations Vary Per Plan)
 - Options Available for Additional Outlet Locations
- Pre-wired with CAT6 Wireless Access Point (WAP) Strategically Located in Your Home

