

Del Webb®

—THE WOODLANDS®—

DWTW Homeowners Assoc. - Lodge Front Desk.....832-225-1149...woodfrontdesk@ccmcnet.com

- Questions or concerns about Irrigation, Landscape, Streets, Sidewalks, Lodge, Sport Courts, Community Gates, Call Box, Lakes and Fountains
- Questions or concerns about Land Development, Home Construction (street parking, debris, lot mowing etc.)
- Deed Restrictions and Exterior home modification requests (ARC Request)
- Annual Assessments and Account Information
- Questions or concerns regarding to Clubs, Groups, Activities
- **After hours emergencies related to Association owned common areas 1-800-274-3165**

Community Manager
Mindy Zapien
Mzapien@ccmcnet.com

Lifestyle Director
Danielle Levesque
Dlevesque@ccmcnet.com

Administrative Coordinator
Jennifer Miller
Jmiller@ccmcnet.com

Del Webb® Customer Care Department (*Warranty Concerns/Questions related to your home.*)

Warranty

- After Hours Emergency Assistance Line: 1-866-785-8346
- CustomerServiceHouston@pultegroup.com

Service Ticket Request Link

- <https://ww.pulte.com/service-request>

Warranty Information

- <https://www.pulte.com/-/media/Static-Picturepark-Assests/Pulte/Pulte-National-Warranty.ashx>

Del Webb® Sales Office 281-529-9190

Aqua Water

Customer Service 1-877-987-2782

Service Outages: <https://www.aquaamerica.com/customer-service-center/service-outages.aspx>

Waste Management/Bulk Trash Pick Up

- Customer Service 1-800-772-8653
- Monday through Friday from 8 A.M. to 5:00 P.M. <https://www.wm.com/us/customer-support>

Centerpoint

- Customer Service 713-207-2222
- Report light outages, and light pole damages: <https://slo.centerpointenergy.com/customerslo.aspx>

Please visit the DWTW Community website at www.livedelwebbthewoodlands.com

Your Community Website

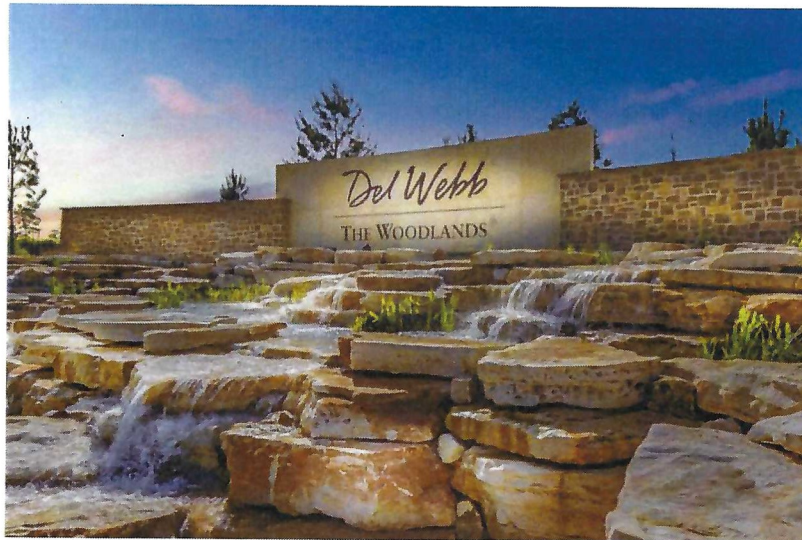
<https://www.delwebb.com/>

You may have heard about this exciting communication tool that we offer to enhance your Del Webb lifestyle. It can be accessed from any computer as long as you have an internet connection. The website provides information about community news, events and activities, documents, group and club information and so much more. Remember that the website is updated daily so be sure to check back frequently. Much of the information is available without having to log in, but certain sections are reserved for residents only (i.e. Resident Directory, group/club pages and directories, etc).

Here is how to access the community website:

- Go to <https://www.delwebb.com/>
- If you don't already have a username/password, click "Register" in the Login section (top right)
- Fill out the required information and confirmation will be emailed to you

If you experience trouble while logging onto the website, please contact the Lodge front desk at 832-225-1149.



**Emergencies Related to Association owned buildings and common areas please call 1-800-274-3165.
Poison Control: 1-800-222-1222**

"THE WOODLANDS is registered in the U.S. Patent and Trademark Office and is a trademark of The Woodlands Land Development Company, L.P., used under license." Community Not Part of The Woodlands Township. This community is not located within the boundaries of The Woodlands Township and receives no services, programs, facilities or amenities that are provided to residents of The Woodlands Township. THE COMMUNITY IS NOT AFFILIATED WITH THE WOODLANDS TOWNSHIP, THE WOODLANDS LAND DEVELOPMENT COMPANY, L.P. OR THE HOWARD HUGHES CORPORATION OR ANY OF THEIR AFFILIATES.

The Lodge Hours of Operation

Monday through Thursday: 6:00 AM-9:00 PM

Friday: 6:00 AM-10:00 PM

Saturday: 8:00 AM-9:00 PM

Sunday: 11:00 AM-6:00 PM

Community Association Office Hours of Operation

Monday through Friday 8:00 AM-4:30 PM

Fitness Center hours of Operation

Open during The Lodge Hours of Operation

The fitness room and locker rooms are available 24 hours a day with a valid Resident ID badge. The remainder of the building, including the indoor pool, is available only during The Lodge Hours of Operation. Please do not attempt to enter these areas after the building is closed. These areas are locked.

Guests:

- Limit of 6 guests per household, per day.
- Guests must have a waiver on file before using facilities
- Guests must sign in each time they visit The Lodge
- Residents must remain with guests at all times. Guests may not use facilities without resident present.

Swim Rules for Children

- Children under the age of nineteen (19), including infants, may only access the pool areas during designated hours.
- Children under the age of nineteen (19) are prohibited from using the spas.
- Children under the age of four (4) are required to wear swim diapers.

Pool Hours for Children

Labor Day Until Memorial Day (Use of Indoor Pool Only)

- M-F 3:00 PM-5:00 PM
- Sa 11:00 AM- 2:00 PM
- Su 1:00 PM-4:00 PM

Memorial Day until Labor Day (Use of Outdoor Pool Only)

- M-F 2:00 PM-5:00 PM
- Sa 11:00 AM- 2:00 PM
- Su 1:00 PM- 4:00 PM



HAVE QUESTIONS:
 ? Our Customer Service Department is here to help:

☎ Call **1-800-800-5804**
 Monday-Friday 8:00 AM - 5:00 PM

💻 E-mail us: cssatex@wm.com
 Find us online: www.wm.com

Del Webb the Woodlands Garbage Collection Service Guidelines

COLLECTION DAY: FRIDAY

Please be sure your waste cart is placed by the curb by 7:00 AM on collection day.

Waste Management furnishes each homeowner a 96-gallon poly cart, with a GREEN lid, for the collection of household garbage, grass clippings, leaves, branches and tree trimmings. Collection shall be limited to the waste cart and shall be placed at the curb.

Important! *For the safety and protection of our employees and equipment, we require that branches and tree trimmings be no greater than three inches (3") in diameter and be cut, tied and bundled in four-foot (4') lengths weighing no more than forty to fifty pounds (40-50 lbs.).*

BULK TRASH COLLECTION

Two (2) items on first Tuesday of each month

Acceptable items include moving boxes (please break them down and bundle them), old furniture, and appliances.

Please note! *WM can no longer dispose of CFC refrigerant containing items (i.e., refrigerators, freezers, etc.) without certification that the Freon has been properly removed and recycled, pursuant to current Federal law.*

UNACCEPTABLE ITEMS

Gasoline & Oil (cans/filters)	Vehicle Tires	Large Pieces of Metal
Electronic Waste (i.e. Televisions/Computer monitors)		Construction Debris (i.e. paint & carpet)

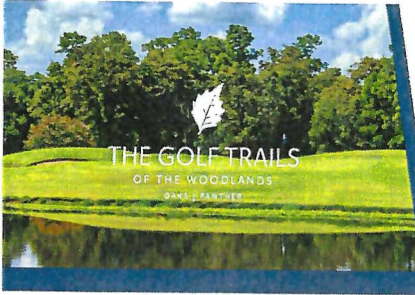
HOLIDAYS

NEW YEAR'S DAY	THANKSGIVING DAY	CHRISTMAS DAY
----------------	------------------	---------------

**if an observed holiday falls on a regular scheduled service day, a service day will be assigned for waste collection and recycling will be collected on the next scheduled service day.*

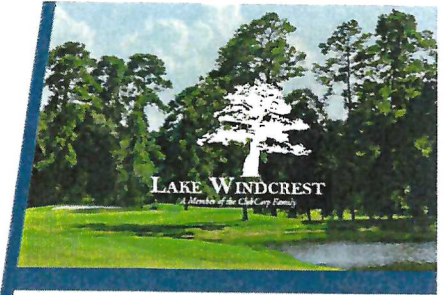


THINK GREEN.®



Del Webb®

THE WOODLANDS®



When you join The Golf Trails of The Woodlands and Lake Windcrest, you'll enjoy countless amenities, 54 holes of golf, fun events year-round, new menus, recent golf improvements and so much more. Plus, with ClubCorp's industry-leading membership program, enjoy 50% off* à la carte dining at both clubs, access to more than 12 clubs in Houston, and free* golf at more than 300 clubs when traveling.

GOLF TRAILS OF THE WOODLANDS MEMBERSHIP

CATEGORY	MONTHLY DUES*
UNLIMITED O.N.E.	\$524
Full family unlimited golf and social access every day at The Golf Trails of The Woodlands and Lake Windcrest, plus swim, fitness and spa access at The Woodlands Resort & Conference Center. Includes O.N.E. - My Club. My Community. My World. Golf at your Home Clubs, free* green and cart fees.	
ASSOCIATE O.N.E	\$265
Full family social benefits and clubhouse access at The Golf Trails of The Woodlands and Lake Windcrest, plus swim, fitness and spa access at The Woodlands Resort & Conference Center. Includes O.N.E. - My Club. My Community. My World. Golf at your Home Clubs: \$11 green fee on weekdays, \$13 green fee on weekends and \$19 cart fee every day.	

LAKE WINDCREST MEMBERSHIP

CATEGORY	MONTHLY DUES*
LAKE WINDCREST UNLIMITED O.N.E.	\$361
Full family unlimited golf and social access every day at Lake Windcrest. Includes O.N.E. - My Club. My Community. My World. Golf at your Home Clubs, free* green and cart fees.	
LAKE WINDCREST UNLIMITED	\$310
Play golf at Lake Windcrest anytime with free* green and cart fees.	

Contact us today to learn more about special incentives and promotions available exclusively for Del Webb Residents!

Terry Nelson, Membership Director | 281.726.4293 | terry.nelson@clubcorp.com

Mitchell Putnam, Membership Director | 281.253.8371 | mitchell.putnam@clubcorp.com



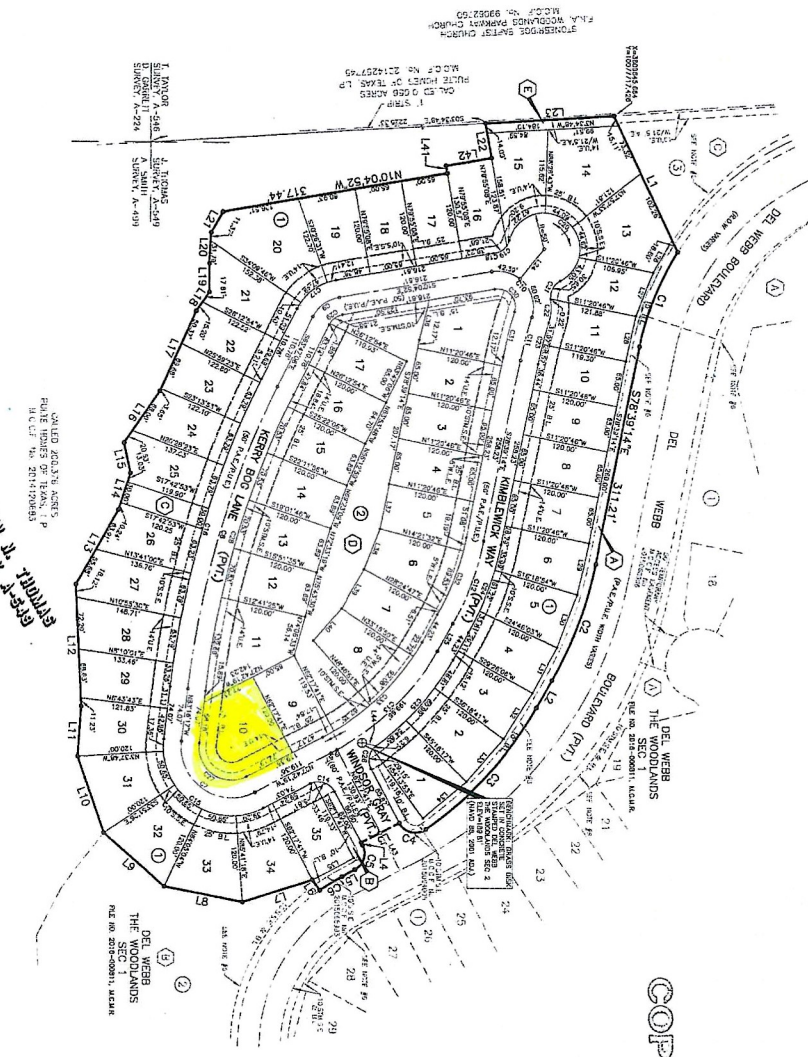
*Annual range fee of \$99 applies. Food and beverage monthly minimum of \$10 applies. Benefits are subject to the benefit terms and conditions, which may be found on clubcorpnetwork.com. Membership is contingent on successful completion of the Club's enrollment process. Other restrictions and exclusions apply. See Club for details. © ClubCorp USA, Inc. All rights reserved. 0518 MR

File No. 2016-035219

Sheet 2 of 3

TM

149B



SYMBOL	DESCRIPTION	RESERVE USE	AREA
A	RESTRICTED RESERVE 'A'	RESTRICTED TO LANDSCAPE USE	0.2394 AC - 17,000 S.F.
B	RESTRICTED RESERVE 'B'	RESTRICTED TO LANDSCAPE USE	0.0782 AC - 5,379 S.F.
C	RESTRICTED RESERVE 'C'	RESTRICTED TO LANDSCAPE USE	0.0026 AC - 1,600 S.F.
D	RESTRICTED RESERVE 'D'	RESTRICTED TO LANDSCAPE USE	0.7109 AC - 50,961 S.F.
E	RESTRICTED RESERVE 'E'	RESTRICTED TO LANDSCAPE USE	0.0655 AC - 2,546 S.F.
	TOTAL		1.1166 AC - 57,485 S.F.

ENGINEER
r.g. miller
 ENGINEERS

SUBDIVIDER
MILLER
 ENGINEERS

16340 Park Ten Place - Suite 350
 Houston, Texas 77044
 (713) 491-9900
 TEXAS PRL REGISTRATION NO. 1-487
 JACK P. MILLER, P.E.

1780 WEST SMOKEHAWK PARKWAY NORTH, HOUSTON, TEXAS 77043
 PHONE 713-413-1900 FAX 713-413-1944
 TEXAS PRL REGISTRATION NO. 10047760
 BRIAN E. WILSON, P.E.

**DEL WEBB
 THE WOODLANDS
 SEC 2**

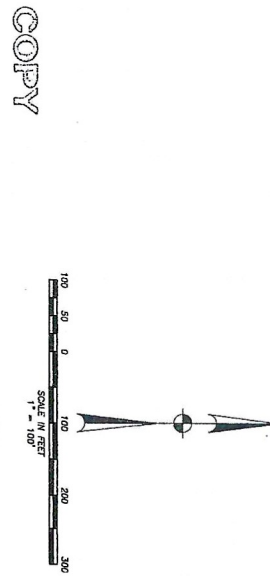
A SUBDIVISION OF 14.39 ACRES OF LAND LOCATED
 IN THE JOHN N. THOMAS SURVEY, A-549,
 MONTGOMERY COUNTY, TEXAS

52 LOTS 2 BLOCKS 5 RESERVES
 DATE: DECEMBER, 2015 SCALE: 1" = 100'

OWNER:
PLATE HOMES OF TEXAS, L.P.
 A TEXAS LIMITED PARTNERSHIP
 16370 PARK TEN PLACE, SUITE 100
 HOUSTON, TEXAS 77044
 281-559-5728

LEGEND

- A.E. = AERIAL EASEMENT
- APPROX. = APPROXIMATELY
- CAB. = CABINET
- CAN. = CANNISTER
- C.L.N. = CARRIED FROM ROAD
- F.N. = FIRE NUMBER
- F.O. = FOUND
- F.O.N. = FOUND STATION LIGHTING AND POWER COMPANY
- I.P. = IRON PIPE
- I.R. = IRON ROD
- M.C.N. = MONTGOMERY COUNTY DEED RECORDS
- M.C.A.R. = MONTGOMERY COUNTY AGRICULTURE RECORDS
- M.C.F.L. = MONTGOMERY COUNTY FILE RECORDS
- M.C.T. = MONTGOMERY COUNTY TAX
- M.C.P.A. = MONTGOMERY COUNTY PLATS
- P.A.E. = PERMANENT ACCESS EASEMENT
- P.C. = FURNISHED UTILITY COORDINATE
- P.P. = PITCHED PIPE
- P.P.P. = PITCHED PIPE
- R.O.W. = RIGHT-OF-WAY
- S. = SEWER
- S.E. = SANITARY SEWER EASEMENT
- S.E.E. = SANITARY SEWER EASEMENT
- T.O.P. = TEXAS DEPARTMENT OF TRANSPORTATION
- U.E. = UTILITY EASEMENT
- V.O.L. = VALVE
- V.L.E. = VALVE LINE EASEMENT
- V.C. = VERTICAL CURVATURE
- X = FINISHING COORDINATE
- Y = NOTHING COORDINATE
- Z = BLOCK NUMBER
- ⊙ = FOUND 5/8 INCH IRON ROD (HEREIN)
- * = SET 5/2 INCH IRON ROD (HEREIN)
- () = BENCHMARK
- (#) = BENCHMARK
- == = STREET NAME CHANGE



COPY

COPY