

IMPROVEMENTS IN SE
JULY 31, 1997

BENTWATER

SECTION FIFTY FOUR

BEING A SUBDIVISION OF 4.5088 ACRES
IN THE OWEN SHANNON SURVEY, A-36
MONTGOMERY COUNTY, TEXAS
14 LOTS 1 BLOCK 0 RESERVES

ENGINEER:
CENTURY ENGINEERING, INC.
3030 SOUTH GESSNER, SUITE 100, HOUSTON, TEXAS 77063

DEVELOPER:
BENTWATER ON THE NORTH SHORE, LTD.
5800 CENTRE PARKWAY, SUITE 540, HOUSTON, TEXAS 77036

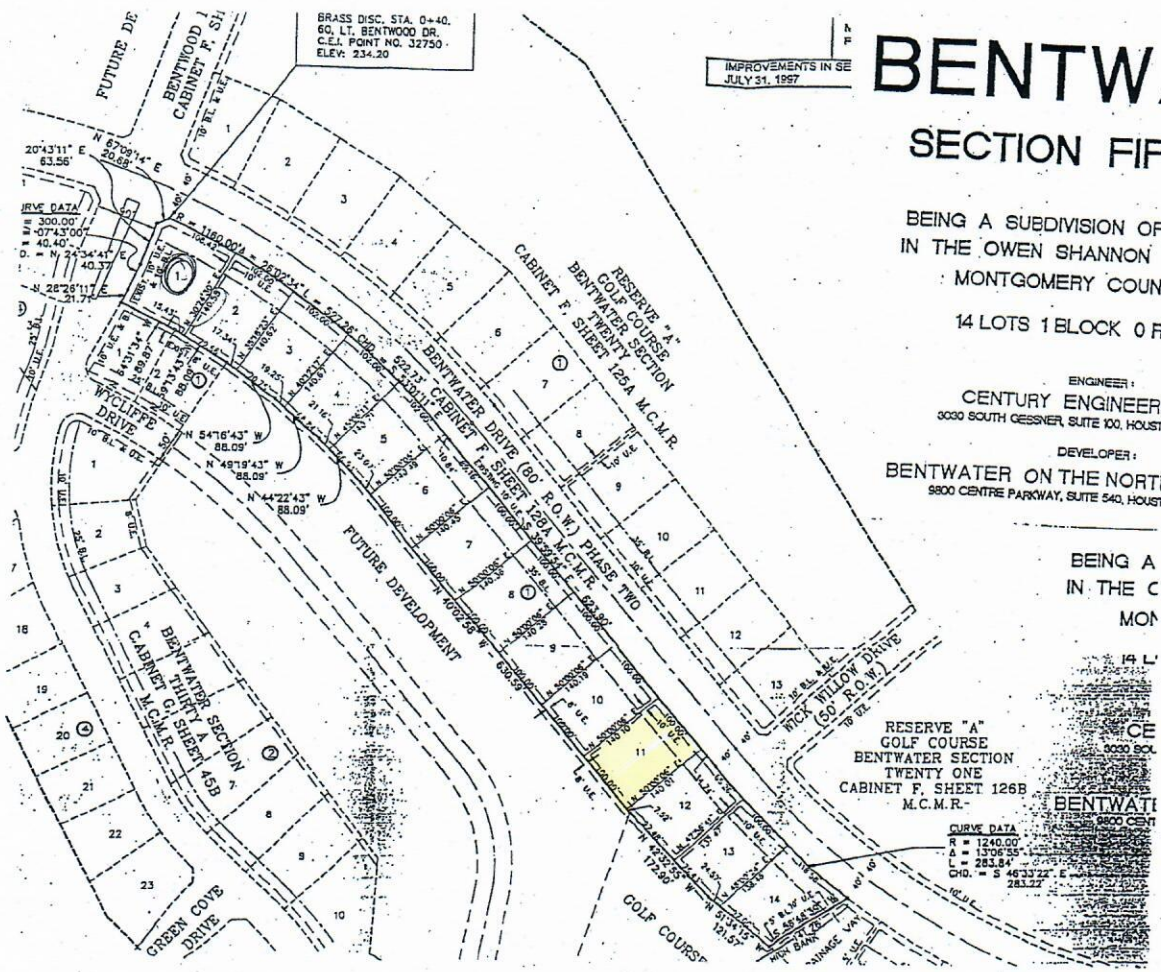
BEING A
IN THE C
MON

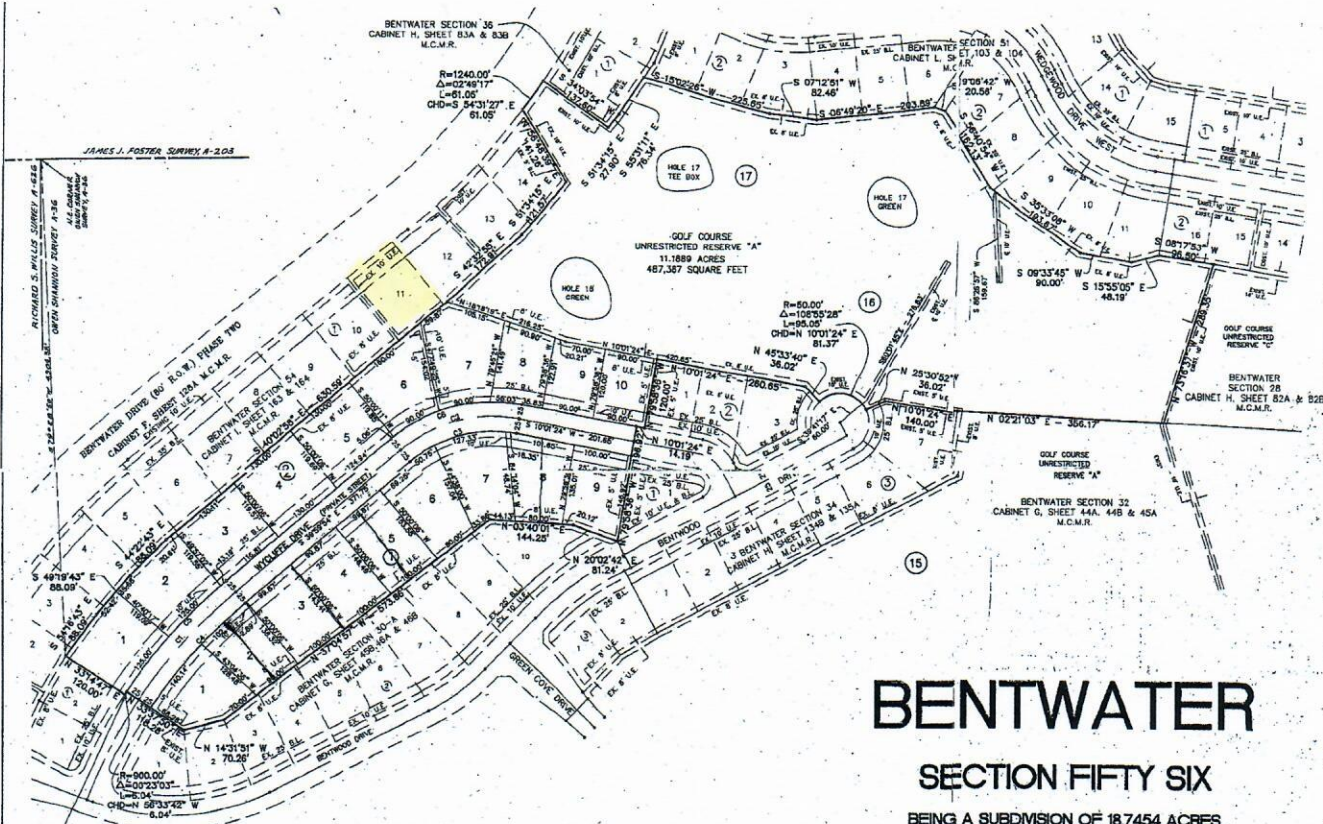
14 L
ICE
3030 BCL
BENTWATER
2800 CENT

RESERVE "A"
GOLF COURSE
BENTWATER SECTION
TWENTY ONE
CABINET F. SHEET 126B
M.C.M.R.

CURVE DATA
R = 1240.00
Δ = 137°05'55"
L = 283.84
CHD. = 5 46'33.22" E
283.22

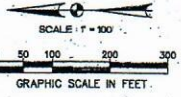
BRASS DISC. STA. 0+40.
60. LT. BENTWOOD DR.
C.E.I. POINT NO. 32750
ELEV. 234.20





JAMES J. FOSTER SURVEY 4-208

BENCH MARK BW NO. 56
 SET CONC. MON. WITH
 BRASS DISC. S 33°44' W
 1.0' FROM CORNER OF LOT 1,
 BLOCK 2
 ELEV. 233.60



CURVE TABLE

CURVE NUMBER	BEARING	RADIUS	ARC LENGTH	TANGENT LENGTH	CHORD LENGTH	CHORD BEARING
C1	18°28'18"	875.00'	250.01'	123.85'	348.11'	248.18°
C2	30°01'18"	250.00'	218.01'	134.83'	347.59'	211.20°
C3	30°01'18"	225.00'	195.47'	124.97'	347.58'	180.20°
C4	18°28'18"	850.00'	243.87'	129.97'	348.11'	248.18°

OBTAIN THE PROPERTY REPORT REQUIRED BY
 FEDERAL LAW AND READ IT BEFORE SIGNING
 ANYTHING. NO FEDERAL AGENCY HAS JUDGED

BENTWATER

SECTION FIFTY SIX

BEING A SUBDIVISION OF 18,7454 ACRES
 IN THE OWEN SHANNON SURVEY, A - 36

MONTGOMERY COUNTY, TEXAS

19 LOTS 2 BLOCKS 1 RESERVE

ENGINEER
CENTURY ENGINEERING, INC.
 3030 SOUTH GESSNER SUITE 100, HOUSTON, TEXAS 77063

DEW 10/28/08