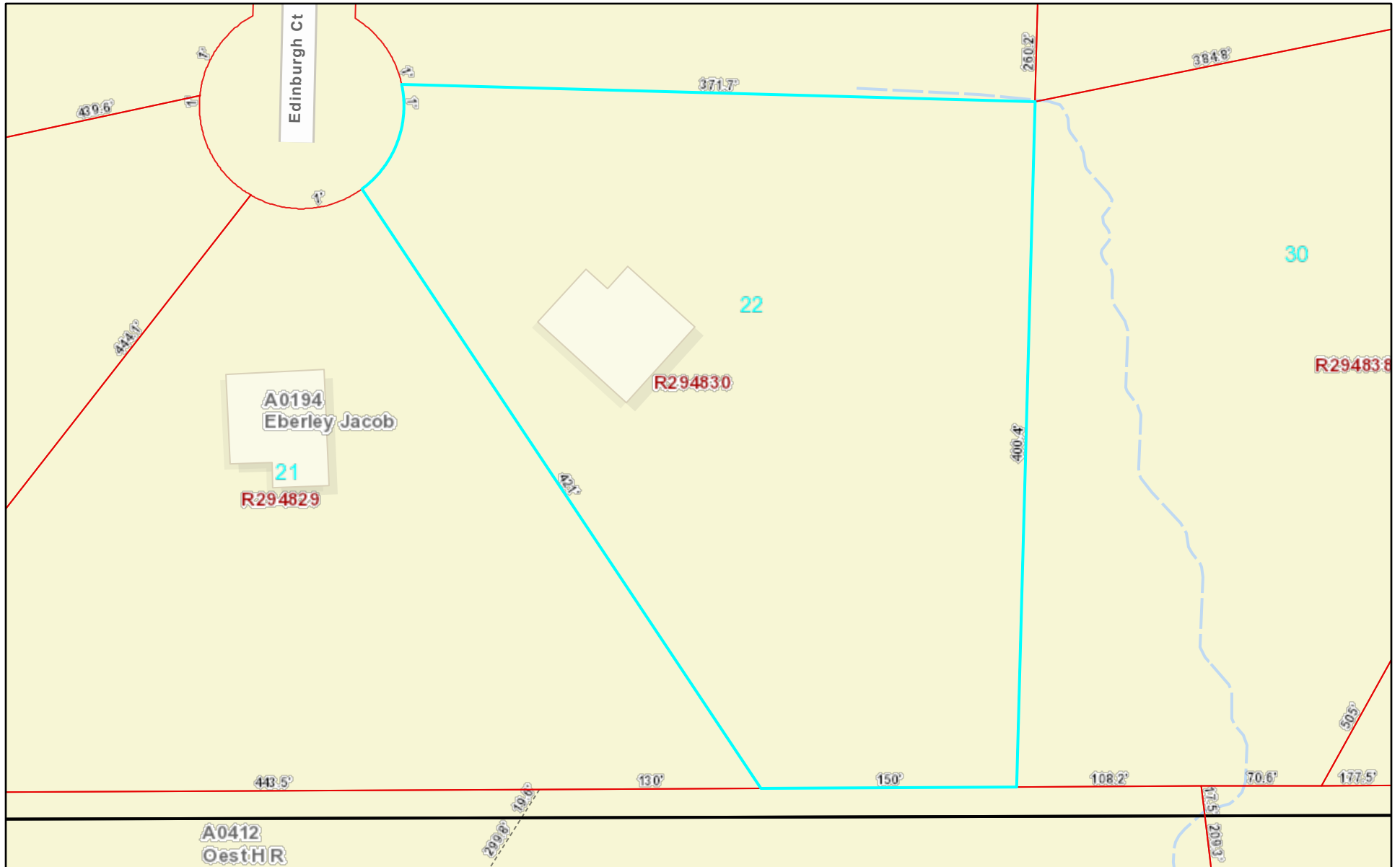
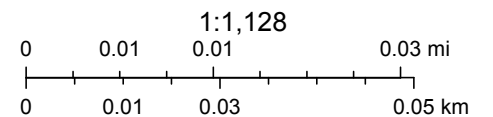


Montgomery CAD Web Map



4/18/2022, 1:57:44 PM

Abstracts
 Parcels
 Lot Lines



Sources: Esri, HERE, Garmin, FAO, NOAA, USGS, © OpenStreetMap contributors, and the GIS User Community

Montgomery County Appraisal District, BIS Consulting -
 Disclaimer: This product is for informational purposes only and has not been prepared for or be suitable for legal, engineering, or surveying purposes. It does not represent an on-the-ground survey and represents only the approximate relative location of boundaries.