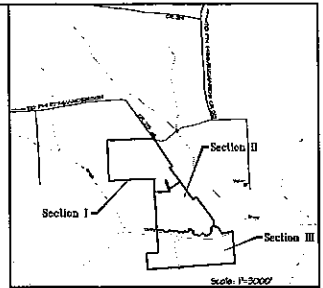


Granite Ridge Ranch

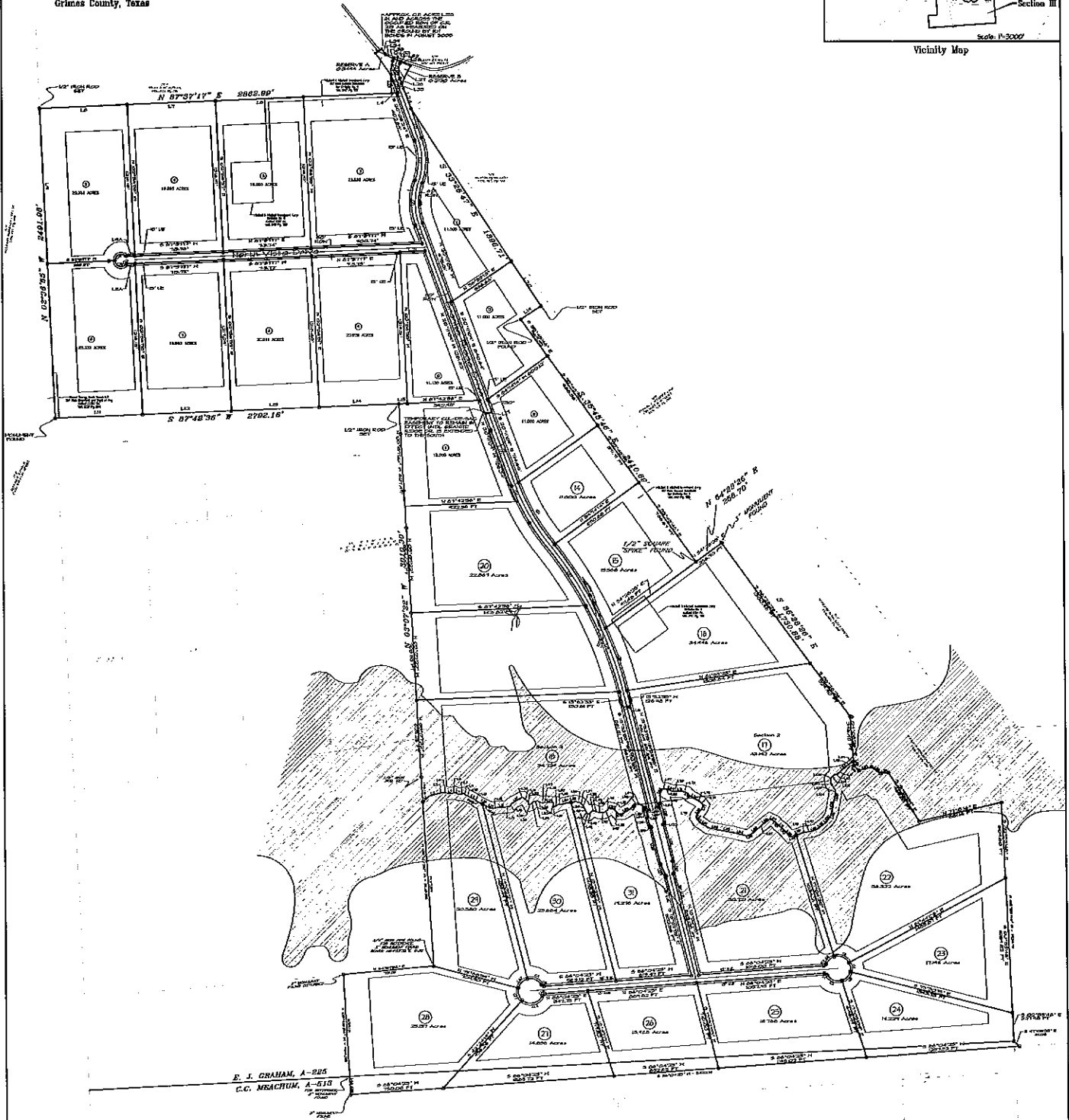
Sections I, II, & III



E J Graham Survey
A-225
Grimes County, Texas



Vicinity Map



DISCLAIMER:
THIS MAP IS A COMPOSITE OF THE FINAL PLATS OF GRANITE RIDGE RANCH SECTIONS I, II, III. IT IS INTENDED TO SHOW THE OVERALL RELATIONSHIP OF THE THREE SUBDIVISION PLATS FOR MARKETING PURPOSES ONLY. THIS MAP IS NOT A SURVEY OR ENGINEERING DOCUMENT. SPECIFIC SURVEYING INFORMATION SHOULD ONLY BE OBTAINED FROM THE OFFICIAL FINAL PLAT OF THE RESPECTIVE SECTION AS FILED IN THE GRIMES COUNTY CLERK'S OFFICE. LICENSED ANY BUSINESS INFORMATION REGARDING THESE SUBDIVISIONS SHOULD BE OBTAINED FROM THE PLATS AND OPERATIONS FOR EACH SECTION ON FILE AT THE GRIMES COUNTY CLERK'S OFFICE.

J.C. JONES & C.A. R.T.E. III
SURVEYORS
1001 E. Hwy 17 West, Waco, Texas 76798