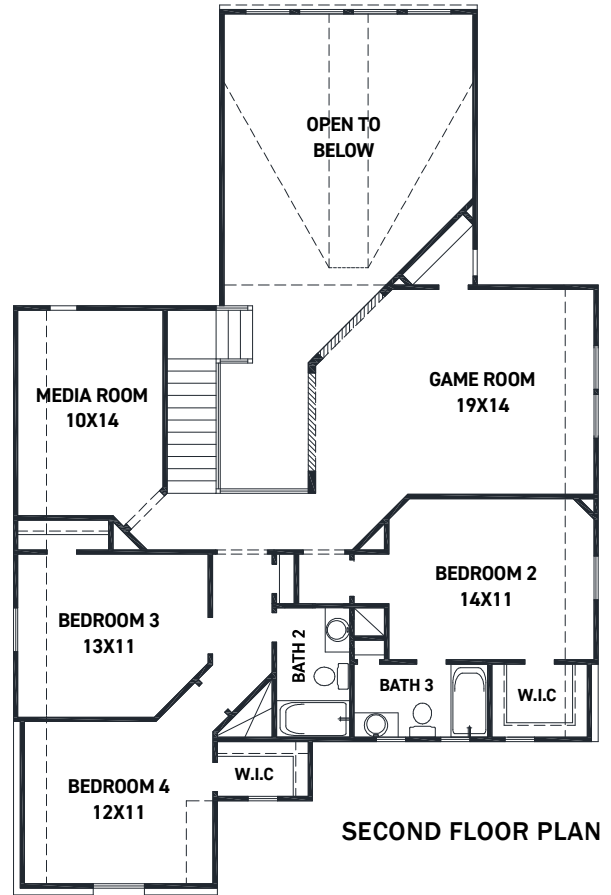
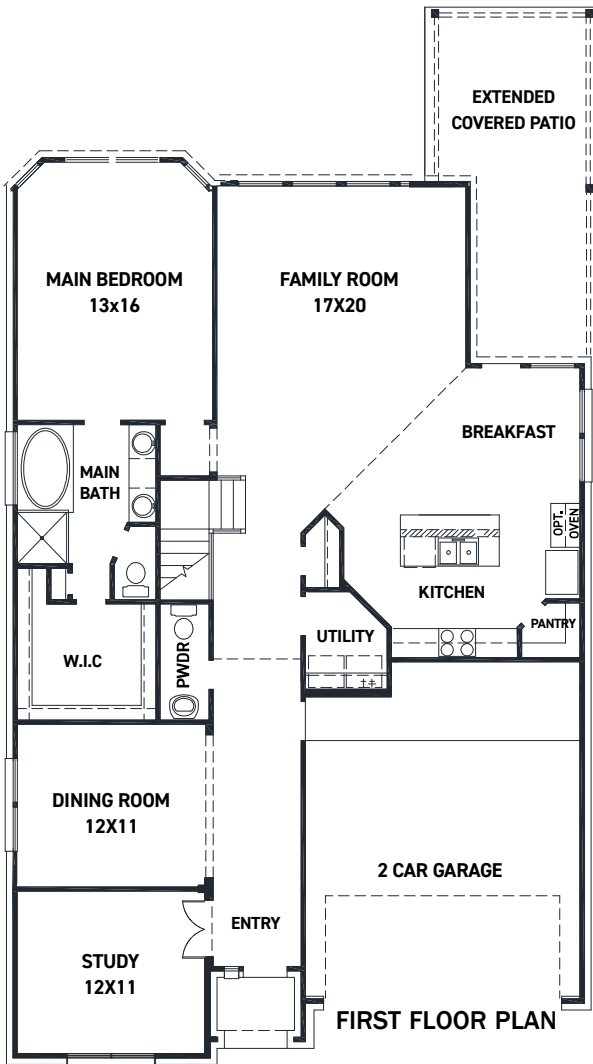


# 8811 Morning Glow. - Verona Plan

## SIENNA 50' - Heritage Park - Section 32

NEW HOME COMING SOON!



- FEATURES**
- 2 Story - Apx: 3020 sqft.
  - 4 Bedrooms - 3.5 Bathrooms
  - 2 Car Garage
  - 50 x 130 Homesite - 6616sqft.
  - Estimated Completion: Aug. 2022

- Upgraded front elevation w/ brick on 1st floor sides/back
- Built in appliances w/ a 36" 5 burner gas cook-top
- Modern 42" kitchen cabinetry w/ hardware
- Porcelain countertops in kitchen & Quartz in bathrooms
- Luxurious hardwood in the main living areas
- Upgraded 8' front door w/ granite privacy glass
- THE NEWMARK STANDARD IN SIENNA
- Open cell spray foam insulation
- 16 seer duel stage HVAC system
- Full sprinkler system & sod
- Full rain gutters
- 2 year Energy Ogre Agreement
- 3rd party inspections (Foundation, frame, energy, final)

**ANDREW TURCO**  
713-825-4914

aturco@newmarkhomes.com

REV 5/21 (5009)



These drawings are conceptual only and are for the convenience of reference. They should not be relied upon as representations, express or implied, of the final detail of the residences. The builder expressly reserves the right to make modifications, revisions, and changes it deems desirable in its sole and absolute discretion. Dimensions and square footages are approximate and may vary with actual construction.