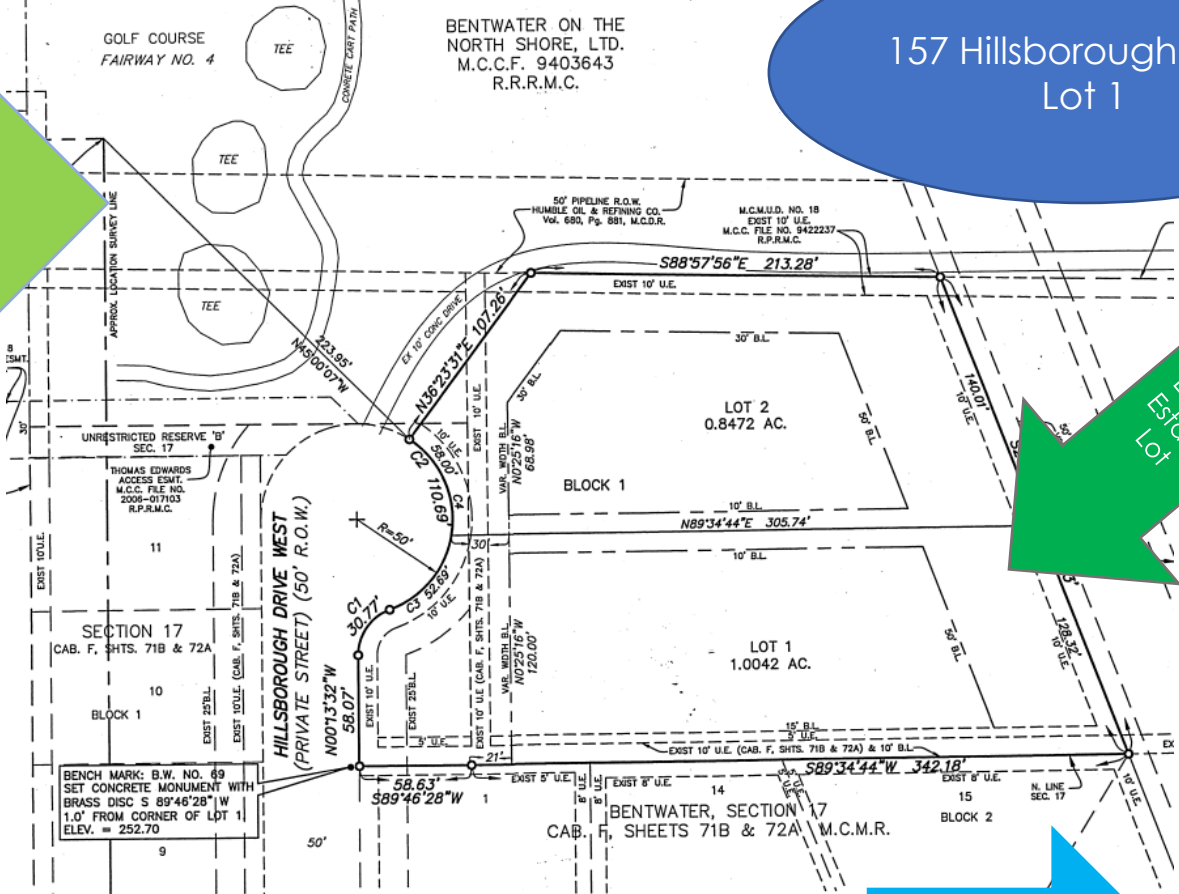
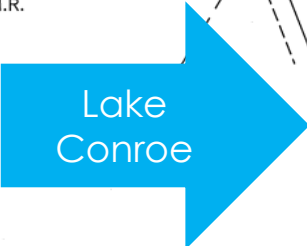


CURVE TABLE					
CURVE	LENGTH	RADIUS	DELTA	CH BEARING	CH DIST
C1	30.77'	25.00'	70°31'43"	N 35°02'19" E	28.87'
C2	110.69'	50.00'	126°50'27"	N 06°52'58" E	89.43'
C3	52.69'	50.00'	60°22'40"	N 40°06'51" E	50.29'
C4	58.00'	50.00'	66°27'47"	N 23°18'22" W	54.80'



BENTWATER SECTION SIXTY NINE

A SUBDIVISION OF 1.8514 ACRES OF LAND
BEING A REPLAT OF UNRESTRICTED RESERVE "C", IN BENTWATER SECTION 17,
RECORDED IN CABINET F, SHEETS 71B & 72A, M.C.M.R. AND ADJOINING LAND IN
THE JAMES L. FOSTER SURVEY, A 203 MONTGOMERY COUNTY TEXAS

