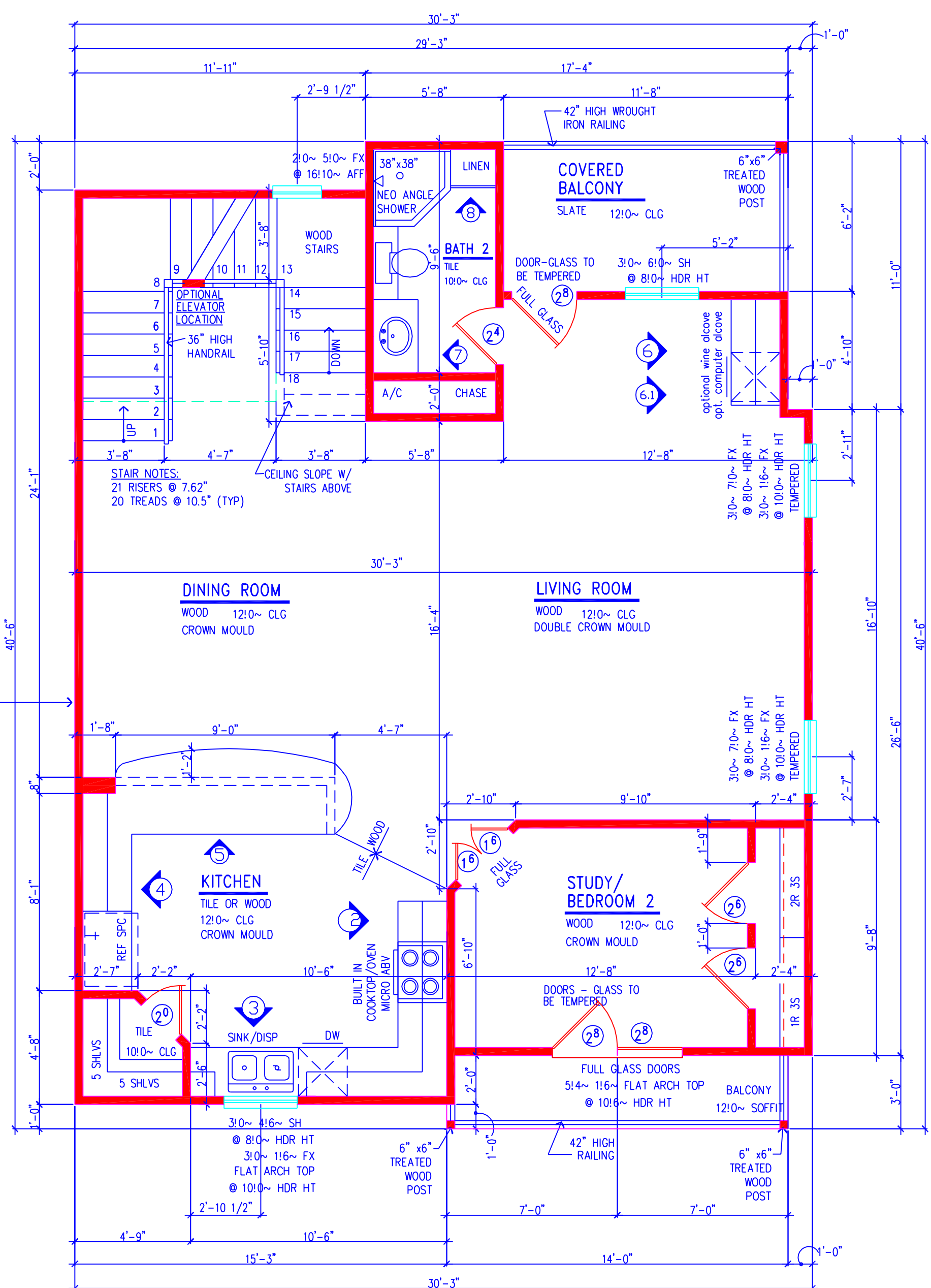
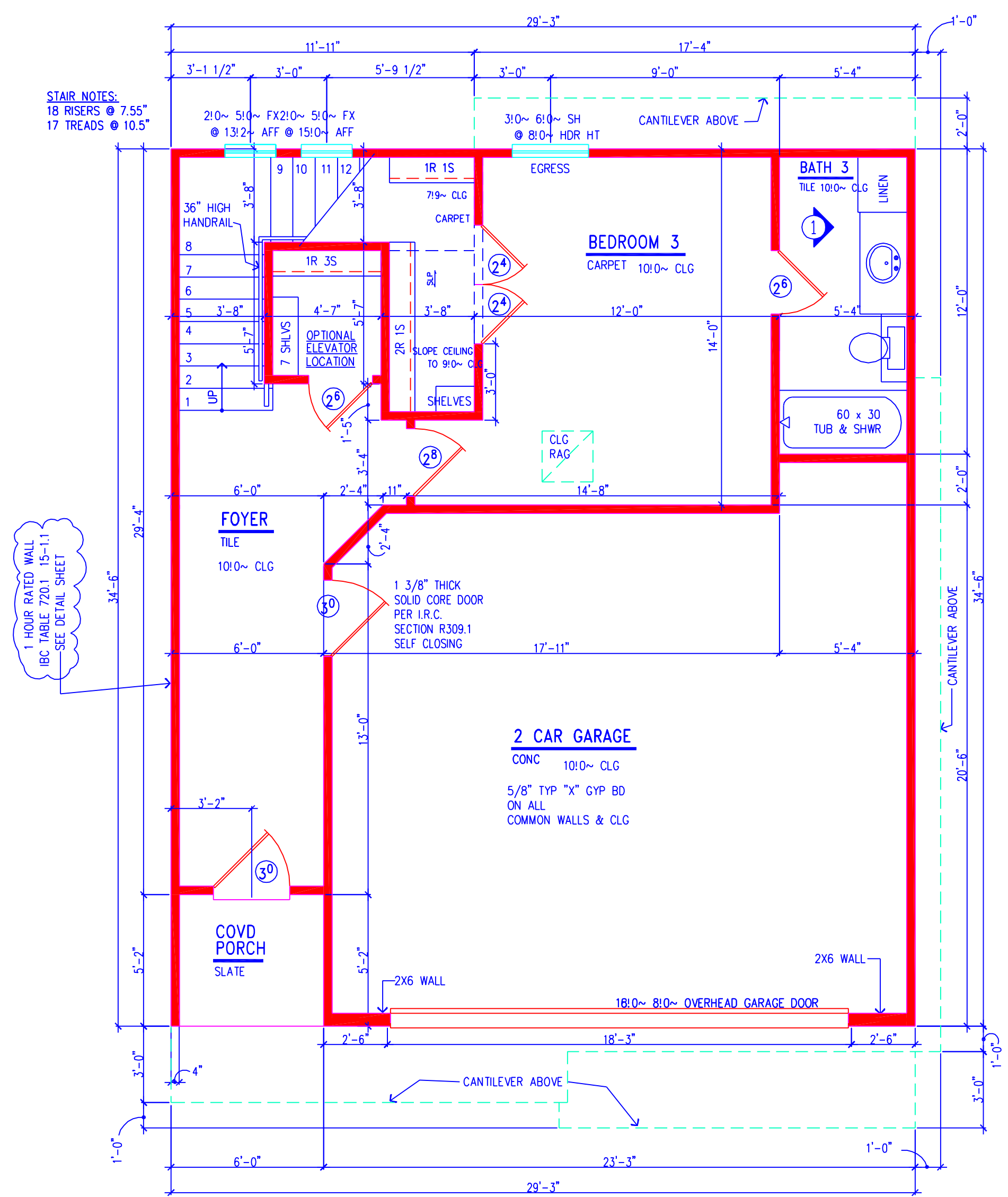


*ALL DOORS TO BE 8' TALL



*ALL DOORS TO BE 8' TALL



*ALL DOORS TO BE 8' TALL

DATE/REVISIONS

ISSUED

PRELIM REVISIONS

TABULATIONS:

FIRST FLOOR LIVING = 506 SQ FT

SECOND FLOOR LIVING = 1059 SQ FT

THIRD FLOOR LIVING = 837 SQ FT

TOTAL LIVING AREA = 2402 SQ FT

FRONT PORCH AREA = 31 SQ FT

GARAGE AREA = 472 SQ FT

TOTAL SLAB = 1009 SQ FT

COVERED TERRACE AREA = 108 SQ FT

2ND LEVEL BALCONY (REAR) = 72 SQ FT

2ND LEVEL BALCONY (FRONT) = 41 SQ FT

3RD LEVEL BALCONY (FRONT) = 41 SQ FT

TOTAL COVERED = 367 SQ FT

OPEN TERRACE AREA = 80 SQ FT

Subdivision

Gregory Square

City/Jurisdiction

Houston, Tx

Harris County

Title

Floor Plans

Plan Number

PLAN C - ELEV. 3

LOT 12

1