

5952 FM 109, New Ulm, TX



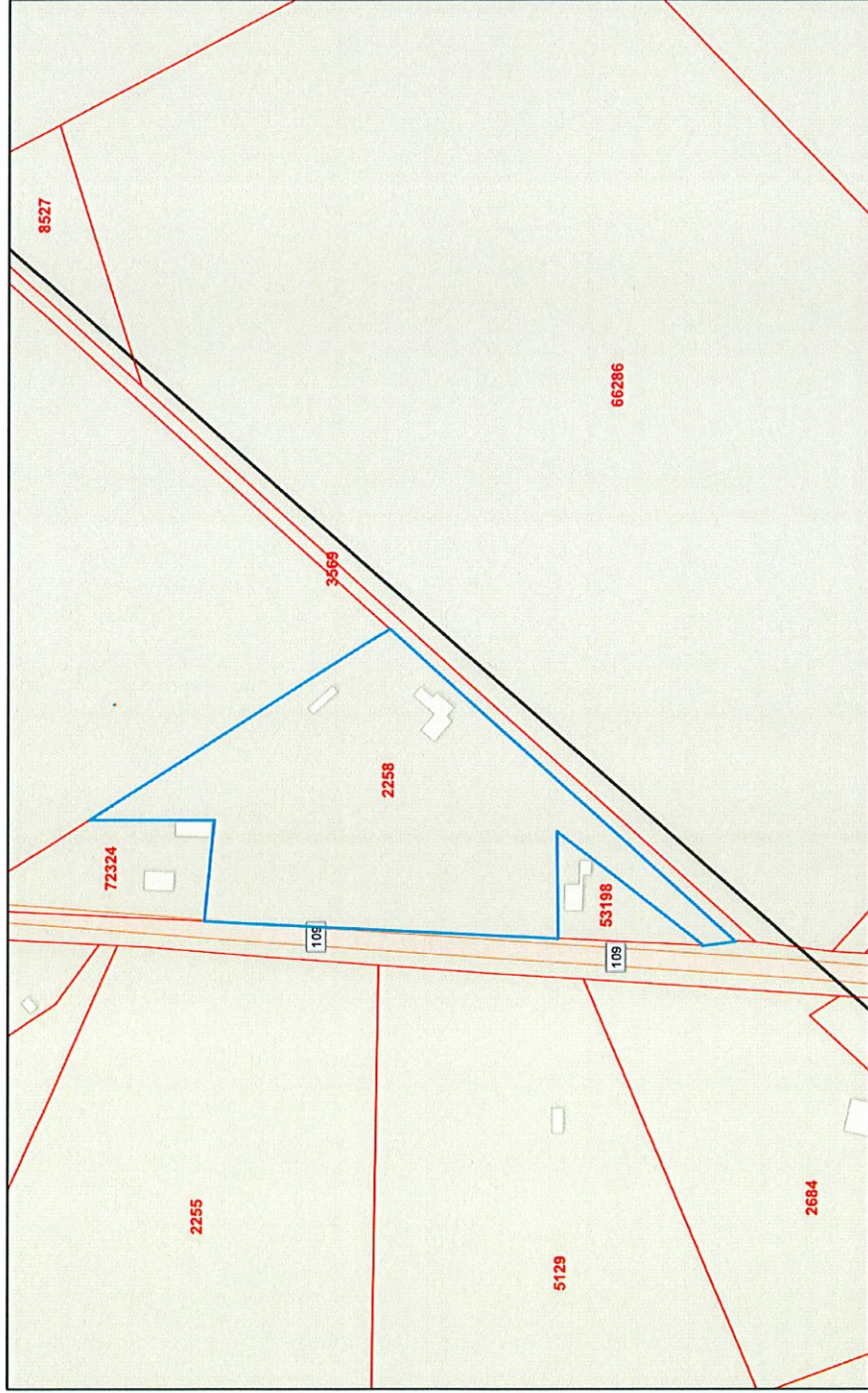
4/25/2022, 6:02:28 PM

-  Parcels
-  Abstracts

1:4,514
0 0.03 0.07 0.13 mi
0 0.05 0.1 0.2 km
© OpenStreetMap (and) contributors, CC-BY-SA

Disclaimer: This product and relative contents are the property of the respective governmental entity and BIS Consultants. Use is restricted for official purposes.
Austin County Appraisal District, BIS Consulting - www.bisconsulting.com

5952 FM 109, New Ulm, TX



4/25/2022, 6:01:49 PM

- Parcels
- Abstracts

1:4,514
0 0.03 0.07 0.13 mi
0 0.05 0.1 0.2 km
Sources: Esri, HERE, Garmin, FAO, NOAA, USGS, © OpenStreetMap contributors, and the GIS User Community

Disclaimer: This product and relative contents are the property of the respective governmental entity and BIS Consultants. Use is restricted for official purposes.
Austin County Appraisal District, BIS Consulting - www.bisconsulting.com