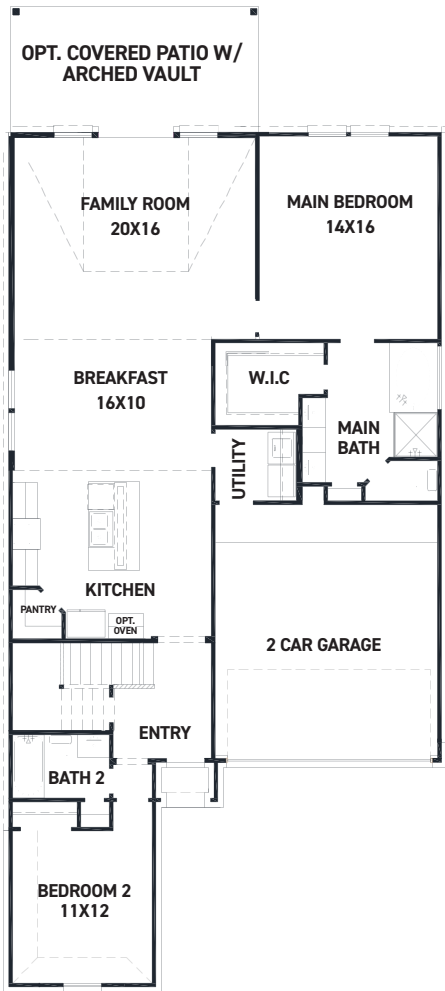
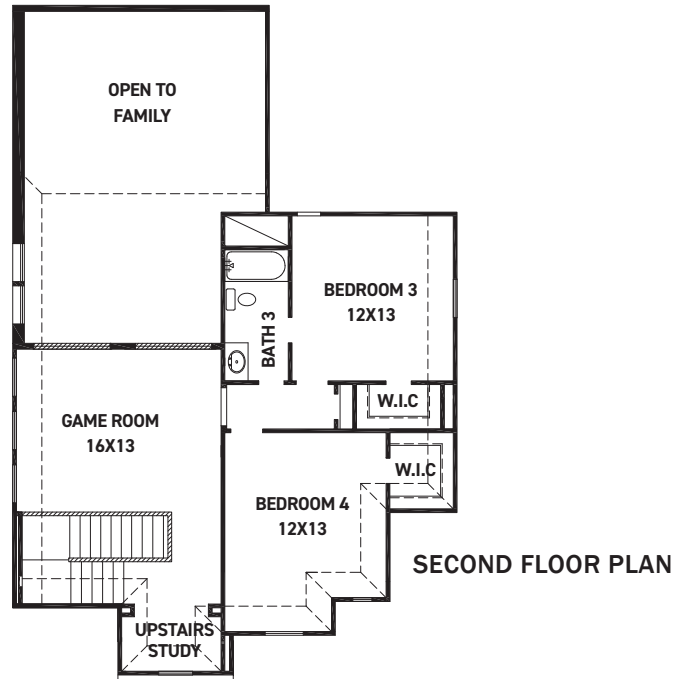


# 1802 Waters Branch Dr. - Duval Plan SIENNA 45' - Heritage Park - Section 29A

## NEW HOME COMING SOON!



FIRST FLOOR PLAN



SECOND FLOOR PLAN

### FEATURES

- 2 Story - Apx: 2454 sqft.
- 4 Bedrooms - 3 Bathrooms
- 2 Car Garage
- 45 x 143 Homesite - 6909sqft.
- Estimated Completion: August 2022

- Upgraded front elevation w/ brick on 1st floor sides/back
- Built in appliances w/ a 36" 5 burner gas cook-top
- Modern 42" kitchen cabinetry w/ hardware
- Quartz countertops in the kitchen & bathrooms
- Quality hardwood flooring in the main living areas
- Upgraded 8' private solid wood front door

- THE NEWMARK STANDARD IN SIENNA
- Open cell spray foam insulation
- 16 seer duel stage HVAC system
- Full sprinkler system & sod
- Full rain gutters
- 2 years of Energy Ogre included
- 3rd party inspections (Foundation, frame, energy, final)

REV 8/20 (453D)



These drawings are conceptual only and are for the convenience of reference. They should not be relied upon as representations, express or implied, of the final detail of the residences. The builder expressly reserves the right to make modifications, revisions, and changes it deems desirable in its sole and absolute discretion. Dimensions and square footages are approximate and may vary with actual construction.