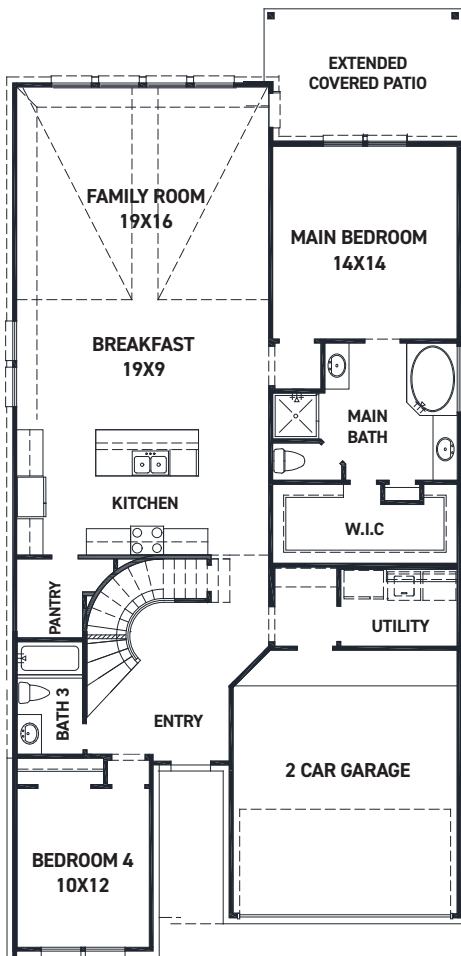


1814 Waters Branch Dr. - Newton Plan

SIENNA 45' - Heritage Park - Section 29A

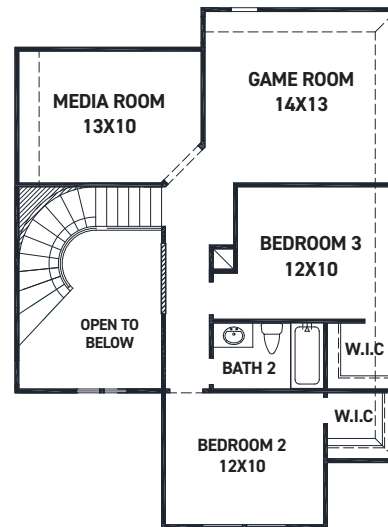
NEW HOME COMING SOON!



FIRST FLOOR PLAN

FEATURES

- 2 Story - Apx: 2585 sqft.
- 4 Bedrooms - 3 Bathrooms
- 2 Car Garage
- Homesite - 6909sqft.
- Estimated Completion: Aug. 2022



SECOND FLOOR PLAN

- Modern front elevation w/ brick on 1st floor sides/back
- Built in appliances w/ a 36" 5 burner gas cook-top
- 42" kitchen cabinetry w/ hardware
- Quartz countertops in the kitchen & bathrooms
- 6 x26 wood look tile in the main living areas
- Upgraded 8 ft. front door

- THE NEWMARK STANDARD IN SIENNA
- Open cell spray foam insulation
- 16 seer dual stage HVAC system
- Full sprinkler system & sod
- Full rain gutters
- 2 year Energy Ogre agreement
- 3rd party inspections (Foundation, frame, energy, final)

REV 01/21 (452N)



These drawings are conceptual only and are for the convenience of reference. They should not be relied upon as representations, express or implied, of the final detail of the residences. The builder expressly reserves the right to make modifications, revisions, and changes it deems desirable in its sole and absolute discretion. Dimensions and square footages are approximate and may vary with actual construction.